

# Converting Colors

Decimal(11369341)

Have a look what the booklet for  
Decimal(11369341) contains.

<b>Decimal(11369341)</b> .....	3
<i><b>Conversions</b></i> .....	4
<i><b>Details</b></i> .....	6
<i><b>Harmonies</b></i> .....	11
<i><b>Previews</b></i> .....	23
<i><b>Color Blindness Simulation</b></i> .....	26
<i><b>CSS Examples</b></i> .....	29

# Color

**Decimal(11369341)**

# Conversions

## Conversions Part 1

<b>Format</b>	<b>Color</b>
Hex	AD7B7D
RGB	173, 123, 125
RGB Percent	68%, 48%, 49%
CMY	0.3216, 0.5176, 0.5098
CMYK	0.00, 0.29, 0.28, 0.32
HSL	358°, 23%, 58%
HSV	358°, 29%, 68%
XYZ	28.0182, 24.5308, 22.6602
YIQ	138.1780, 29.1580, 11.2220

# Conversions

## Conversions Part 2

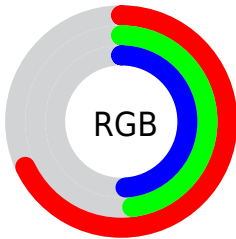
<b>Format</b>	<b>Color</b>
<b>R<sub>YB</sub></b>	173, 123, 125
Decimal	11369341
CIE Lab	56.62, 19.77, 6.68
CIE LCh	57, 20.865, 18.664
Yxy	24.5308, 0.3725, 0.3262
Android (android.graphics.Color)	4289559421 (0xFFAD7B7D)
YUV	138.1780, -6.4968, 30.5389
Hunter-Lab	49.5286, 14.3020, 7.5438

# Details

The Decimal color **11369341** is a dark color, and the websafe version is hex **996666**. A complement of this color would be **8105387**, and the grayscale version is **9079434**.

A 20% lighter version of the original color is **15052978**, and **7817804** is the 20% darker color. If you saturate the color by 10%, you get **11364972**, and if you desaturate by 10%, it is **11373710**.

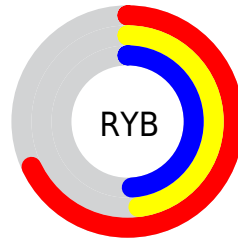
# Distribution



Red (68%)

Green (48%)

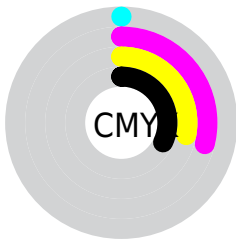
Blue (49%)



Red (68%)

Yellow (48%)

Blue (49%)

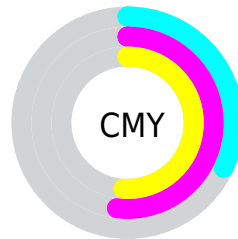


Cyan (0%)

Magenta (29%)

Yellow (28%)

Black (32%)



Cyan (32%)

Magenta (52%)

Yellow (51%)

# Brightness & Saturation Gradients


These gradients show how the Decimal color 11369341 changes by changing the brightness by 10 percent. The first figure shows a shift by +10% for each color and the second figure -10%.

Similar to the brightness gradients but the following saturation gradients show a change of the Decimal color 11369341 by changing the saturation by 10% instead.



 11369341  11369341

16777215  9593444

 15052978  7817804

 16763853  6173494

 16771305  4529440

 3016457

 851968

 0

 11369341  11369341

 11364972  11373710

 11360348

 11378334

 11355979

 11382703

 11351611

 11387071

 11347242

 11391696

 11342617

 11396065

 11338249

 11400433

 11337735

 11403263

# Harmonies

## Analogous

The Analogous color harmony consists of three colors that are next to each other on the color wheel.



11041679



11369341



11042669

# Triad

The Triadic color harmony groups three colors that are evenly spaced from another and form a triangle on the color wheel.



11369341



7704431



6851755

# Complementary

The Complementary color scheme is a pair of colors which are on the opposite of each other on the color wheel.



11369341



8105387

# Split Complementary

Split-complementary colors differ from the complementary color scheme. The scheme consists of three colors, the original color and two neighbors of the complement color.



5673122



11369341



6394496

# Square

The Square scheme is like the rectangle color scheme, but the four colors are evenly spaced on the color wheel.



11369341



9013861



5542547



8488618

# Rectangle

The Rectangle color scheme consists of four colors that form a rectangle on the color wheel.



11369341



10584678



5542547



6393257



# Sweetspot

The Sweet Spot groups the original color and five complimentary colors.



11369341



14732493



11172781



7365732



15790320



7368816



# Same Dimension

The Same Dimension uses a secret algorithm to generate beautiful new colors.



11369341



14717589



11375227



5721678



9830406



1507329



# Inverse Universe

The Inverse Universe completely reimagines the original color for something new.



11369341



14717589



8099757



5721678



9830406

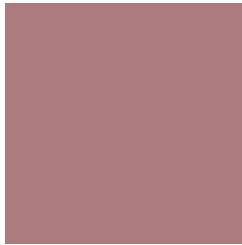


1507329



# Previews

## White Background



This preview shows how the Decimal color 11369341 looks on a white background.

## Color Contrast Check

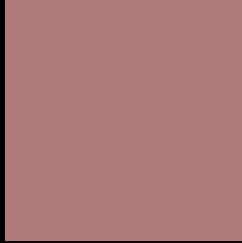
Large Text (above 18pt) WCAG AA ✓ Pass

Any Text WCAG AA × Fail

Large Text (above 18pt) WCAG AAA × Fail

Any Text WCAG AAA × Fail

# Black Background



This preview shows how the Decimal color 11369341 looks on a black background.

## Color Contrast Check

Large Text (above 18pt) WCAG AA ✓ Pass

Any Text WCAG AA ✓ Pass

Large Text (above 18pt) WCAG AAA ✓ Pass

Any Text WCAG AAA × Fail

If you want to check with other color combinations, try the [Color Contrast Checker](#).



## Decimal 11369341 Background



This preview shows how black text looks on a background with the Decimal color 11369341.




This preview shows how white text looks on a background with the Decimal color 11369341.

# Color Blindness Simulation

Color vision deficiency is a very complex topic, and I could not describe the different causes any better than Wikipedia does, so if you want to learn more, you should check out their [article about color blindness](#).

## Dichromacy





**Tritanopia**  
11434627

# Trichromacy



**Original Color**  
11369341

**Protanomaly**  
9995137

**Deuteranomaly**  
10584188

**Tritanomaly**  
11434625

# Monochromacy



**Original Color**  
11369341

**Achromatopsia**  
9079434

**Achromatomaly**  
9930117

# CSS Examples

## Text

The CSS property to change the color of the text to Decimal 11369341 is called "color". The color property can be set on classes, ids or directly on the HTML element.

This example shows how text in the color #AD7B7D looks like.

```
.text, #text, p{  
    color:#AD7B7D  
}
```

If you want to add a text shadow in that color use the text-shadow property, you can generate a text shadow directly with our [CSS Text Shadow Generator](#).

Here you see how black text with a 4 pixel #AD7B7D colored shadow looks like.

```
.shadow{ text-shadow: 4px 4px 2px #AD7B7D
}
```

## Border

The CSS property to change the border of an element to Decimal 11369341 is called "border". The border property can be set on classes, ids or directly on the HTML element.

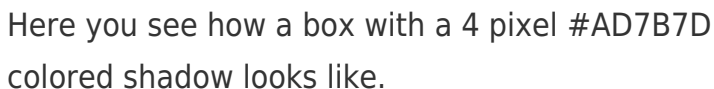
This example shows the color as border, it can be applied via the CSS property "border" or "border-color".

```
.border, #border, table{ border:4px solid
#AD7B7D }
```

If only the border color should be changed use the property `border-color`.

```
.border{ border-color:#AD7B7D }
```

If you want to add a box shadow in that color use:



Here you see how a box with a 4 pixel `#AD7B7D` colored shadow looks like.

```
.boxshadow{ -moz-box-shadow:4px 4px 4px  
4px #AD7B7D; -webkit-box-shadow:4px 4px  
4px 4px #AD7B7D; box-shadow:4px 4px 4px  
4px #AD7B7D }
```

# Background

The CSS property to change the background color of an element to Decimal 11369341 is called "background". The background property can be set on classes, ids or directly on the HTML element.

```
.background, #background, body{  
background:#AD7B7D }
```

If only the background color should be changed can be used:

```
.background{ background-color:#AD7B7D }
```

This example shows the color as background, it is applied via the CSS property "background".

To optimize and compress your CSS code, you can use our [online CSS compressor and optimizer](#) based on csstidy. If you want to create a linear or radial gradient as background or border, check our [CSS Gradient Generator](#).



Hey! You found this booklet interesting? Support Converting Colors with the new Membership Option!

The pro membership hides all ads, plus gives you double the colors in the color bucket, and more awesome pro features!

**[Learn more, Memberships starting at \\$2.50/m!](#)**

**Follow me  
on Twitter!**

@ConvertingColor