

# Converting Colors

Decimal(11369811)

Have a look what the booklet for  
Decimal(11369811) contains.

<b>Decimal(11369811)</b> .....	3
<i><b>Conversions</b></i> .....	4
<i><b>Details</b></i> .....	6
<i><b>Harmonies</b></i> .....	11
<i><b>Previews</b></i> .....	23
<i><b>Color Blindness Simulation</b></i> .....	26
<i><b>CSS Examples</b></i> .....	29

# Color

**Decimal(11369811)**

# Conversions

## Conversions Part 1

<b>Format</b>	<b>Color</b>
Hex	AD7D53
RGB	173, 125, 83
RGB Percent	68%, 49%, 33%
CMY	0.3216, 0.5098, 0.6745
CMYK	0.00, 0.28, 0.52, 0.32
HSL	28°, 35%, 50%
HSV	28°, 52%, 68%
XYZ	26.1285, 24.1760, 11.4729
YIQ	134.5640, 42.0900, -2.8860

# Conversions

## Conversions Part 2

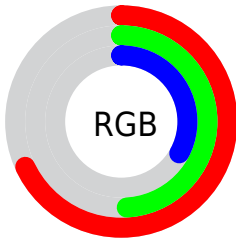
<b>Format</b>	<b>Color</b>
<b>RYB</b>	173, 162, 83
Decimal	11369811
CIELab	56.26, 13.63, 30.13
CIELCh	56, 33.067, 65.661
Yxy	24.1760, 0.4229, 0.3913
Android (android.graphics.Color)	4289559891 (0xFFAD7D53)
YUV	134.5640, -25.4211, 33.7084
Hunter-Lab	49.1691, 8.8092, 20.5839

# Details

The Decimal color **11369811** is a dark color, and the websafe version is hex **996633**. A complement of this color would be **5473197**, and the grayscale version is **8882055**.

A 20% lighter version of the original color is **15184517**, and **7752741** is the 20% darker color. If you saturate the color by 10%, you get **11367490**, and if you desaturate by 10%, it is **11372132**.

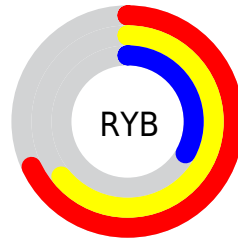
# Distribution



Red (68%)

Green (49%)

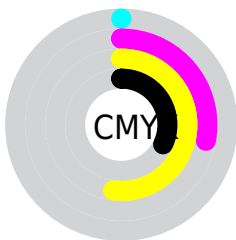
Blue (33%)



Red (68%)

Yellow (64%)

Blue (33%)

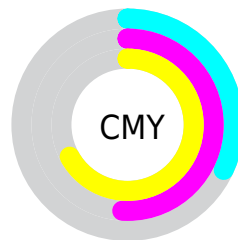


Cyan (0%)

Magenta (28%)

Yellow (52%)

Black (32%)



Cyan (32%)

Magenta (51%)


Yellow (67%)

# Brightness & Saturation Gradients

These gradients show how the Decimal color 11369811 changes by changing the brightness by 10 percent. The first figure shows a shift by +10% for each color and the second figure -10%.

Similar to the brightness gradients but the following saturation gradients show a change of the Decimal color 11369811 by changing the saturation by 10% instead.



 11369811       11369811

16777215       9528379

 15184517       7752741

 16764320       5977358

 16771515       4333568

 16777175       2689792

 16777203       0

 11369811       11369811

 11367490       11372132

 11365168       11374454

■ 11362591

■ 11377031

■ 11360270

■ 11379352

■ 11358464

■ 11381674

■ 11383995

■ 11386572

■ 11388893

■ 11391215

# Harmonies

## Analogous

The Analogous color harmony consists of three colors that are next to each other on the color wheel.



12350567



11369811



9733965

# Triad

The Triadic color harmony groups three colors that are evenly spaced from another and form a triangle on the color wheel.



11369811



2528908



9534902

# Complementary

The Complementary color scheme is a pair of colors which are on the opposite of each other on the color wheel.



11369811



5473197

# Split Complementary

Split-complementary colors differ from the complementary color scheme. The scheme consists of three colors, the original color and two neighbors of the complement color.



6719680



11369811



38311

# Square

The Square scheme is like the rectangle color scheme, but the four colors are evenly spaced on the color wheel.



11369811



5411950



3117243



11564191

# Rectangle

The Rectangle color scheme consists of four colors that form a rectangle on the color wheel.



11369811



8424786



3117243



8683963



# Sweetspot

The Sweet Spot groups the original color and five complimentary colors.



11369811



14732732



11359107



7365979



15790320



7368816



# Same Dimension

The Same Dimension uses a secret algorithm to generate beautiful new colors.



11369811



14718549



11381075



5722702



9848320



1510144



# Inverse Universe

The Inverse Universe completely reimagines the original color for something new.



5473197



5611488



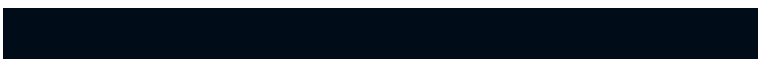
5461677



5133143



20630

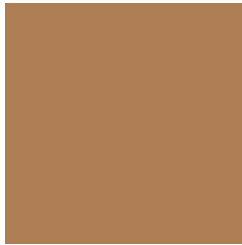


3095



# Previews

## White Background



This preview shows how the Decimal color 11369811 looks on a white background.

## Color Contrast Check

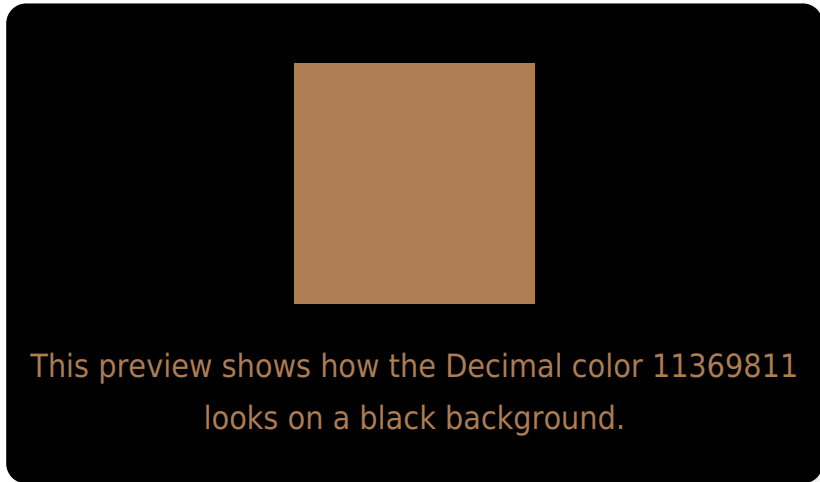
Large Text (above 18pt) WCAG AA ✓ Pass

Any Text WCAG AA × Fail

Large Text (above 18pt) WCAG AAA × Fail

Any Text WCAG AAA × Fail

# Black Background



## Color Contrast Check

Large Text (above 18pt) WCAG AA ✓ Pass

Any Text WCAG AA ✓ Pass

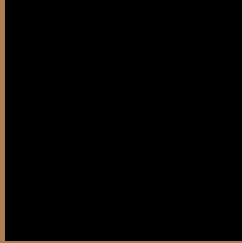
Large Text (above 18pt) WCAG AAA ✓ Pass

Any Text WCAG AAA × Fail

If you want to check with other color combinations, try the [Color Contrast Checker](#).



## Decimal 11369811 Background



This preview shows how black text looks on a background with the Decimal color 11369811.




This preview shows how white text looks on a background with the Decimal color 11369811.

# Color Blindness Simulation

Color vision deficiency is a very complex topic, and I could not describe the different causes any better than Wikipedia does, so if you want to learn more, you should check out their [article about color blindness](#).

## Dichromacy





**Tritanopia**  
11630464

# Trichromacy



**Original Color**  
11369811

**Protanomaly**  
10257238

**Deuteranomaly**  
10977362

**Tritanomaly**  
11565424

# Monochromacy



**Original Color**  
11369811

**Achromatopsia**  
8882055

**Achromatomaly**  
9798516

# CSS Examples

## Text

The CSS property to change the color of the text to Decimal 11369811 is called "color". The color property can be set on classes, ids or directly on the HTML element.

This example shows how text in the color #AD7D53 looks like.

```
.text, #text, p{  
  color:#AD7D53  
}
```

If you want to add a text shadow in that color use the text-shadow property, you can generate a text shadow directly with our [CSS Text Shadow Generator](#).

Here you see how black text with a 4 pixel #AD7D53 colored shadow looks like.

```
.shadow{ text-shadow: 4px 4px 2px #AD7D53
}
```

## Border

The CSS property to change the border of an element to Decimal 11369811 is called "border". The border property can be set on classes, ids or directly on the HTML element.

This example shows the color as border, it can be applied via the CSS property "border" or "border-color".

```
.border, #border, table{ border:4px solid
#AD7D53 }
```

If only the border color should be changed use the property border-color.

```
.border{ border-color:#AD7D53 }
```

If you want to add a box shadow in that color use:

Here you see how a box with a 4 pixel #AD7D53 colored shadow looks like.

```
.boxshadow{ -moz-box-shadow:4px 4px 4px  
4px #AD7D53; -webkit-box-shadow:4px 4px  
4px 4px #AD7D53; box-shadow:4px 4px 4px  
4px #AD7D53 }
```

# Background

The CSS property to change the background color of an element to Decimal 11369811 is called "background". The background property can be set on classes, ids or directly on the HTML element.

```
.background, #background, body{  
background:#AD7D53 }
```

If only the background color should be changed can be used:

```
.background{ background-color:#AD7D53 }
```

This example shows the color as background, it is applied via the CSS property "background".

To optimize and compress your CSS code, you can use our [online CSS compressor and optimizer](#) based on csstidy. If you want to create a linear or radial gradient as background or border, check our [CSS Gradient Generator](#).



Hey! You found this booklet interesting? Support Converting Colors with the new Membership Option!

The pro membership hides all ads, plus gives you double the colors in the color bucket, and more awesome pro features!

**[Learn more, Memberships starting at \\$2.50/m!](#)**

**Follow me  
on Twitter!**

@ConvertingColor