

Converting Colors

Decimal(11371129)

Have a look what the booklet for
Decimal(11371129) contains.

Decimal(11371129)	3
<i>Conversions</i>	4
<i>Details</i>	6
<i>Harmonies</i>	11
<i>Previews</i>	23
<i>Color Blindness Simulation</i>	26
<i>CSS Examples</i>	29

Color

Decimal(11371129)

Conversions

Conversions Part 1

Format	Color
Hex	AD8279
RGB	173, 130, 121
RGB Percent	68%, 51%, 47%
CMY	0.3216, 0.4902, 0.5255
CMYK	0.00, 0.25, 0.30, 0.32
HSL	10°, 24%, 58%
HSV	10°, 30%, 68%
XYZ	28.6674, 26.2300, 21.6411
YIQ	141.8310, 28.5170, 6.3170

Conversions

Conversions Part 2

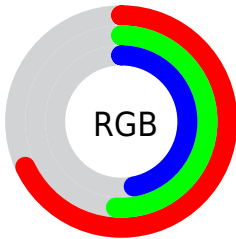
Format	Color
R_{YB}	173, 132, 121
Decimal	11371129
CIE Lab	58.25, 15.25, 11.31
CIE LCh	58, 18.986, 36.553
Yxy	26.2300, 0.3745, 0.3427
Android (android.graphics.Color)	4289561209 (0xFFAD8279)
YUV	141.8310, -10.2697, 27.3352
Hunter-Lab	51.2152, 10.2877, 10.7975

Details

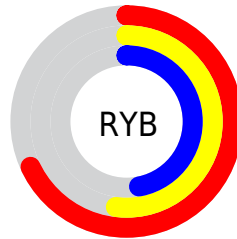
The Decimal color **11371129** is a dark color, and the websafe version is hex **CC9999**. A complement of this color would be **7972013**, and the grayscale version is **9342606**.

A 20% lighter version of the original color is **15054765**, and **7819336** is the 20% darker color. If you saturate the color by 10%, you get **11367528**, and if you desaturate by 10%, it is **11374730**.

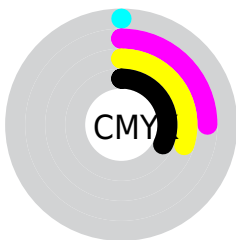
Distribution



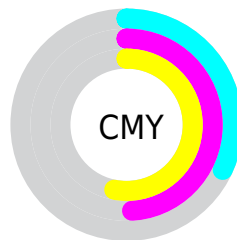
- Red (68%)
- Green (51%)
- Blue (47%)



- Red (68%)
- Yellow (52%)
- Blue (47%)



- Cyan (0%)
- Magenta (25%)
- Yellow (30%)
- Black (32%)



- Cyan (32%)
- Magenta (49%)
- Yellow (53%)

Brightness & Saturation Gradients

These gradients show how the Decimal color 11371129 changes by changing the brightness by 10 percent. The first figure shows a shift by +10% for each color and the second figure -10%.

Similar to the brightness gradients but the following saturation gradients show a change of the Decimal color 11371129 by changing the saturation by 10% instead.


 11371129

 11371129

16777215

 9595232

 15054765

 7819336

 16765897

 6175026


 16773093

 4530973

 3018243

 1179648

 0


 11371129

 11371129

 11367528

 11374730

 11363670

 11378588

 11360069

 11382189

 11356468

 11385790

 11352610

 11389648

 11349009

 11393249

 11345408

 11396850

 11400447

 11403263

Harmonies

Analogous

The Analogous color harmony consists of three colors that are next to each other on the color wheel.



11436169



11371129



10782574

Triad

The Triadic color harmony groups three colors that are evenly spaced from another and form a triangle on the color wheel.



11371129



7378046



8228013

Complementary

The Complementary color scheme is a pair of colors which are on the opposite of each other on the color wheel.



11371129



7972013

Split Complementary

Split-complementary colors differ from the complementary color scheme. The scheme consists of three colors, the original color and two neighbors of the complement color.



6918570



11371129



6395535

Square

The Square scheme is like the rectangle color scheme, but the four colors are evenly spaced on the color wheel.



11371129



8556913



6198687



9668519

Rectangle

The Rectangle color scheme consists of four colors that form a rectangle on the color wheel.



11371129



10127979



6198687



7769773

Sweetspot

The Sweet Spot groups the original color and five complimentary colors.



11371129



14733516



11368868



7366244



15790320



7368816

Same Dimension

The Same Dimension uses a secret algorithm to generate beautiful new colors.



11371129



14720656



11377785



5722190



9837056



1508352

Inverse Universe

The Inverse Universe completely reimagines the original color for something new.



7972013



9491168



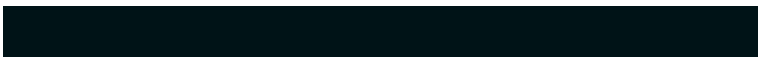
7965357



5133655



31894



4887

Previews

White Background



This preview shows how the Decimal color 11371129 looks on a white background.

Color Contrast Check

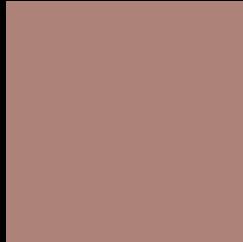
Large Text (above 18pt) WCAG AA ✓ Pass

Any Text WCAG AA × Fail

Large Text (above 18pt) WCAG AAA × Fail

Any Text WCAG AAA × Fail

Black Background



This preview shows how the Decimal color 11371129 looks on a black background.

Color Contrast Check

Large Text (above 18pt) WCAG AA ✓ Pass

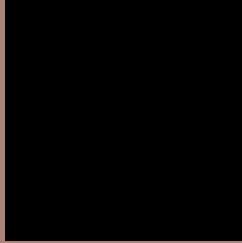
Any Text WCAG AA ✓ Pass

Large Text (above 18pt) WCAG AAA ✓ Pass

Any Text WCAG AAA × Fail

If you want to check with other color combinations, try the [Color Contrast Checker](#).

Decimal 11371129 Background



This preview shows how black text looks on a background with the Decimal color 11371129.



This preview shows how white text looks on a background with the Decimal color 11371129.

Color Blindness Simulation

Color vision deficiency is a very complex topic, and I could not describe the different causes any better than Wikipedia does, so if you want to learn more, you should check out their [article about color blindness](#).

Dichromacy





Tritanopia
11501705

Trichromacy



Original Color
11371129

Protanomaly
10258556

Deuteranomaly
10847608

Tritanomaly
11436419

Monochromacy



Original Color
11371129

Achromatopsia
9342606

Achromatomaly
10062470

CSS Examples

Text

The CSS property to change the color of the text to Decimal 11371129 is called "color". The color property can be set on classes, ids or directly on the HTML element.

This example shows how text in the color #AD8279 looks like.

```
.text, #text, p{  
    color:#AD8279  
}
```

If you want to add a text shadow in that color use the text-shadow property, you can generate a text shadow directly with our [CSS Text Shadow Generator](#).

Here you see how black text with a 4 pixel #AD8279 colored shadow looks like.

```
.shadow{ text-shadow: 4px 4px 2px #AD8279
}
```

Border

The CSS property to change the border of an element to Decimal 11371129 is called "border". The border property can be set on classes, ids or directly on the HTML element.

This example shows the color as border, it can be applied via the CSS property "border" or "border-color".

```
.border, #border, table{ border:4px solid
#AD8279 }
```

If only the border color should be changed use the property `border-color`.

```
.border{ border-color:#AD8279 }
```

If you want to add a box shadow in that color use:

Here you see how a box with a 4 pixel #AD8279 colored shadow looks like.

```
.boxshadow{ -moz-box-shadow:4px 4px 4px  
4px #AD8279; -webkit-box-shadow:4px 4px  
4px 4px #AD8279; box-shadow:4px 4px 4px  
4px #AD8279 }
```

Background

The CSS property to change the background color of an element to Decimal 11371129 is called "background". The background property can be set on classes, ids or directly on the HTML element.

```
.background, #background, body{  
background:#AD8279 }
```

If only the background color should be changed can be used:

```
.background{ background-color:#AD8279 }
```

This example shows the color as background, it is applied via the CSS property "background".

To optimize and compress your CSS code, you can use our [online CSS compressor and optimizer](#) based on csstidy. If you want to create a linear or radial gradient as background or border, check our [CSS Gradient Generator](#).

Hey! You found this booklet interesting? Support Converting Colors with the new Membership Option!

The pro membership hides all ads, plus gives you double the colors in the color bucket, and more awesome pro features!

[Learn more, Memberships starting at \\$2.50/m!](#)

**Follow me
on Twitter!**

@ConvertingColor