

Converting Colors

Decimal(11371892)

Have a look what the booklet for
Decimal(11371892) contains.

Decimal(11371892)	3
<i>Conversions</i>	4
<i>Details</i>	6
<i>Harmonies</i>	11
<i>Previews</i>	23
<i>Color Blindness Simulation</i>	26
<i>CSS Examples</i>	29

Color

Decimal(11371892)

Conversions

Conversions Part 1

Format	Color
Hex	AD8574
RGB	173, 133, 116
RGB Percent	68%, 52%, 45%
CMY	0.3216, 0.4784, 0.5451
CMYK	0.00, 0.23, 0.33, 0.32
HSL	18°, 26%, 57%
HSV	18°, 33%, 68%
XYZ	28.7735, 26.9202, 20.2026
YIQ	143.0220, 29.2970, 3.1930

Conversions

Conversions Part 2

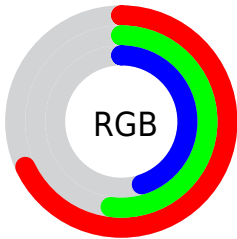
Format	Color
R_{YB}	173, 140, 116
Decimal	11371892
CIE Lab	58.90, 12.88, 15.07
CIE LCh	59, 19.823, 49.470
Yxy	26.9202, 0.3791, 0.3547
Android (android.graphics.Color)	4289561972 (0xFFAD8574)
YUV	143.0220, -13.3218, 26.2907
Hunter-Lab	51.8847, 8.1917, 13.2333

Details

The Decimal color **11371892** is a dark color, and the websafe version is hex **CC9999**. A complement of this color would be **7642285**, and the grayscale version is **9408399**.

A 20% lighter version of the original color is **15055528**, and **7820100** is the 20% darker color. If you saturate the color by 10%, you get **11368803**, and if you desaturate by 10%, it is **11374981**.

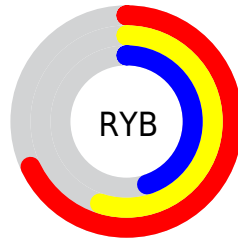
Distribution



Red (68%)

Green (52%)

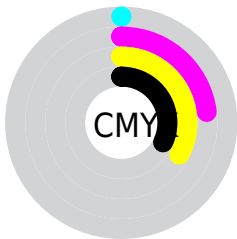
Blue (45%)



Red (68%)

Yellow (55%)

Blue (45%)

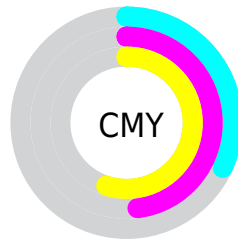


Cyan (0%)

Magenta (23%)

Yellow (33%)

Black (32%)



Cyan (32%)

Magenta (48%)

Yellow (55%)

Brightness & Saturation Gradients

These gradients show how the Decimal color 11371892 changes by changing the brightness by 10 percent. The first figure shows a shift by +10% for each color and the second figure -10%.

Similar to the brightness gradients but the following saturation gradients show a change of the Decimal color 11371892 by changing the saturation by 10% instead.

 11371892  11371892

16777215  9595995

 15055528  7820100

 16766659  6175789

 16773855  4531737

16777212  3019008

 1245184

 0

 11371892  11371892

 11368803  11374981

■ 11365713

■ 11378071

■ 11362624

■ 11381160

■ 11359279

■ 11384505

■ 11356190

■ 11387595

■ 11353100

■ 11390684

■ 11351040

■ 11393773

■ 11396862

■ 11399935

Harmonies

Analogous

The Analogous color harmony consists of three colors that are next to each other on the color wheel.



11698819



11371892



10586732

Triad

The Triadic color harmony groups three colors that are evenly spaced from another and form a triangle on the color wheel.



11371892



6920071



8948654

Complementary

The Complementary color scheme is a pair of colors which are on the opposite of each other on the color wheel.



11371892



7642285

Split Complementary

Split-complementary colors differ from the complementary color scheme. The scheme consists of three colors, the original color and two neighbors of the complement color.



7442863



11371892



6133913

Square

The Square scheme is like the rectangle color scheme, but the four colors are evenly spaced on the color wheel.



11371892



8099191



6329768



10389156

Rectangle

The Rectangle color scheme consists of four colors that form a rectangle on the color wheel.



11371892



9801323



6329768



8424880

Sweetspot

The Sweet Spot groups the original color and five complimentary colors.



11371892



14733770



11367581



7366499



15790320



7368816

Same Dimension

The Same Dimension uses a secret algorithm to generate beautiful new colors.



11371892



14721415



11379060



5722446



9841920



1509120

Inverse Universe

The Inverse Universe completely reimagines the original color for something new.



7642285



8898272



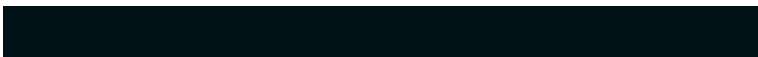
7635117



5133399



27286



4119

Previews

White Background



This preview shows how the Decimal color 11371892 looks on a white background.

Color Contrast Check

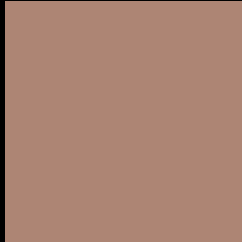
Large Text (above 18pt) WCAG AA ✓ Pass

Any Text WCAG AA × Fail

Large Text (above 18pt) WCAG AAA × Fail

Any Text WCAG AAA × Fail

Black Background



This preview shows how the Decimal color 11371892 looks on a black background.

Color Contrast Check

Large Text (above 18pt) WCAG AA ✓ Pass

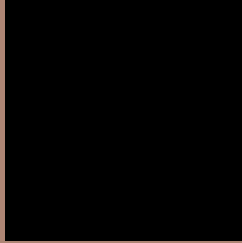
Any Text WCAG AA ✓ Pass

Large Text (above 18pt) WCAG AAA ✓ Pass

Any Text WCAG AAA × Fail

If you want to check with other color combinations, try the [Color Contrast Checker](#).

Decimal 11371892 Background



This preview shows how black text looks on a background with the Decimal color 11371892.



This preview shows how white text looks on a background with the Decimal color 11371892.

Color Blindness Simulation

Color vision deficiency is a very complex topic, and I could not describe the different causes any better than Wikipedia does, so if you want to learn more, you should check out their [article about color blindness](#).

Dichromacy



Original Color
11371892

Protanopia
9801336

Deuteranopia
10848371



Tritanopia
11502220

Trichromacy



Original Color
11371892

Protanomaly
10390391

Deuteranomaly
11044723

Tritanomaly
11436931

Monochromacy



Original Color
11371892

Achromatopsia
9408399

Achromatomaly
10128261

CSS Examples

Text

The CSS property to change the color of the text to Decimal 11371892 is called "color". The color property can be set on classes, ids or directly on the HTML element.

This example shows how text in the color #AD8574 looks like.

```
.text, #text, p{  
  color:#AD8574  
}
```

If you want to add a text shadow in that color use the text-shadow property, you can generate a text shadow directly with our [CSS Text Shadow Generator](#).

Here you see how black text with a 4 pixel #AD8574 colored shadow looks like.

```
.shadow{ text-shadow: 4px 4px 2px #AD8574
}
```

Border

The CSS property to change the border of an element to Decimal 11371892 is called "border". The border property can be set on classes, ids or directly on the HTML element.

This example shows the color as border, it can be applied via the CSS property "border" or "border-color".

```
.border, #border, table{ border:4px solid
#AD8574 }
```

If only the border color should be changed use the property `border-color`.

```
.border{ border-color:#AD8574 }
```

If you want to add a box shadow in that color use:

Here you see how a box with a 4 pixel #AD8574 colored shadow looks like.

```
.boxshadow{ -moz-box-shadow:4px 4px 4px  
4px #AD8574; -webkit-box-shadow:4px 4px  
4px 4px #AD8574; box-shadow:4px 4px 4px  
4px #AD8574 }
```

Background

The CSS property to change the background color of an element to Decimal 11371892 is called "background". The background property can be set on classes, ids or directly on the HTML element.

```
.background, #background, body{  
background:#AD8574 }
```

If only the background color should be changed can be used:

```
.background{ background-color:#AD8574 }
```

This example shows the color as background, it is applied via the CSS property "background".

To optimize and compress your CSS code, you can use our [online CSS compressor and optimizer](#) based on csstidy. If you want to create a linear or radial gradient as background or border, check our [CSS Gradient Generator](#).

Hey! You found this booklet interesting? Support Converting Colors with the new Membership Option!

The pro membership hides all ads, plus gives you double the colors in the color bucket, and more awesome pro features!

[Learn more, Memberships starting at \\$2.50/m!](#)

**Follow me
on Twitter!**

@ConvertingColor