

Converting Colors

Decimal(11372679)

Have a look what the booklet for
Decimal(11372679) contains.

Decimal(11372679)	3
<i>Conversions</i>	4
<i>Details</i>	6
<i>Harmonies</i>	11
<i>Previews</i>	23
<i>Color Blindness Simulation</i>	26
<i>CSS Examples</i>	29

Color

Decimal(11372679)

Conversions

Conversions Part 1

Format	Color
Hex	AD8887
RGB	173, 136, 135
RGB Percent	68%, 53%, 53%
CMY	0.3216, 0.4667, 0.4706
CMYK	0.00, 0.21, 0.22, 0.32
HSL	2°, 19%, 60%
HSV	2°, 22%, 68%
XYZ	30.4109, 28.2418, 26.7701
YIQ	146.9490, 22.3730, 7.5330

Conversions

Conversions Part 2

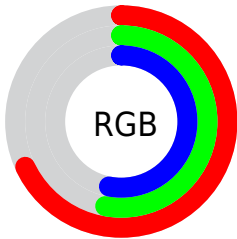
Format	Color
R_{YB}	173, 136, 135
Decimal	11372679
CIE _{Lab}	60.11, 13.93, 5.93
CIE _{LCh}	60, 15.142, 23.037
Yxy	28.2418, 0.3560, 0.3306
Android (android.graphics.Color)	4289562759 (0xFFAD8887)
YUV	146.9490, -5.8909, 22.8467
Hunter-Lab	53.1430, 9.1457, 7.3336

Details

The Decimal color **11372679** is a dark color, and the websafe version is hex **CC9999**. A complement of this color would be **8891565**, and the grayscale version is **9671571**.

A 20% lighter version of the original color is **15056316**, and **7886421** is the 20% darker color. If you saturate the color by 10%, you get **11368310**, and if you desaturate by 10%, it is **11377048**.

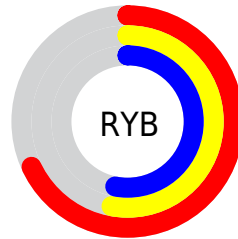
Distribution



Red (68%)

Green (53%)

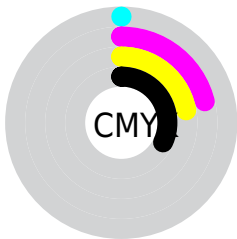
Blue (53%)



Red (68%)

Yellow (53%)

Blue (53%)

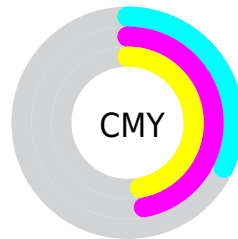


Cyan (0%)

Magenta (21%)

Yellow (22%)

Black (32%)



Cyan (32%)

Magenta (47%)

Yellow (47%)

Brightness & Saturation Gradients

These gradients show how the Decimal color 11372679 changes by changing the brightness by 10 percent. The first figure shows a shift by +10% for each color and the second figure -10%.

Similar to the brightness gradients but the following saturation gradients show a change of the Decimal color 11372679 by changing the saturation by 10% instead.

 11372679

 11372679

16777215

 9596782

 15056316

 7886421

 16767448

 6242110


 16774900

 4597800

 3085332

 1769473

 0

 11372679

 11372679

 11368310

 11377048

 11363940

 11381418

 11359571

 11385787

 11355458

 11389900

 11351089

 11394270

 11346719

 11398639

 11342350

 11403007

 11339008

 11403263

Harmonies

Analogous

The Analogous color harmony consists of three colors that are next to each other on the color wheel.



11176085



11372679



11111292

Triad

The Triadic color harmony groups three colors that are evenly spaced from another and form a triangle on the color wheel.



11372679



8492929



8295339

Complementary

The Complementary color scheme is a pair of colors which are on the opposite of each other on the color wheel.



11372679



8891565

Split Complementary

Split-complementary colors differ from the complementary color scheme. The scheme consists of three colors, the original color and two neighbors of the complement color.



7444390



11372679



7641229

Square

The Square scheme is like the rectangle color scheme, but the four colors are evenly spaced on the color wheel.



11372679



9474936



7248027



9408425

Rectangle

The Rectangle color scheme consists of four colors that form a rectangle on the color wheel.



11372679



10653048



7248027



7967914

Sweetspot

The Sweet Spot groups the original color and five complimentary colors.



11372679



14733777



11372460



7366503



15790320



7368816

Same Dimension

The Same Dimension uses a secret algorithm to generate beautiful new colors.



11372679



14723238



11377543



5721678



9831424



1507584

Inverse Universe

The Inverse Universe completely reimagines the original color for something new.



8891565



10936288



8886701



5133911



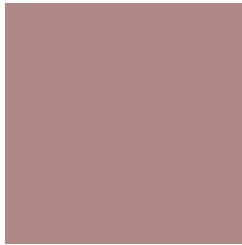
37526



5655

Previews

White Background



This preview shows how the Decimal color 11372679 looks on a white background.

Color Contrast Check

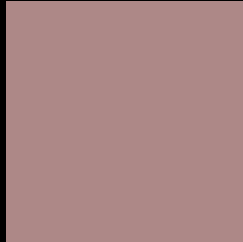
Large Text (above 18pt) WCAG AA ✓ Pass

Any Text WCAG AA × Fail

Large Text (above 18pt) WCAG AAA × Fail

Any Text WCAG AAA × Fail

Black Background



This preview shows how the Decimal color 11372679 looks on a black background.

Color Contrast Check

Large Text (above 18pt) WCAG AA ✓ Pass

Any Text WCAG AA ✓ Pass

Large Text (above 18pt) WCAG AAA ✓ Pass

Any Text WCAG AAA × Fail

If you want to check with other color combinations, try the [Color Contrast Checker](#).

Decimal 11372679 Background



This preview shows how black text looks on a background with the Decimal color 11372679.




This preview shows how white text looks on a background with the Decimal color 11372679.

Color Blindness Simulation

Color vision deficiency is a very complex topic, and I could not describe the different causes any better than Wikipedia does, so if you want to learn more, you should check out their [article about color blindness](#).

Dichromacy





Tritanopia
11437713

Trichromacy



Original Color
11372679

Protanomaly
10390922

Deuteranomaly
10980230

Tritanomaly
11437965

Monochromacy



Original Color
11372679

Achromatopsia
9671571

Achromatomaly
10260367

CSS Examples

Text

The CSS property to change the color of the text to Decimal 11372679 is called "color". The color property can be set on classes, ids or directly on the HTML element.

This example shows how text in the color #AD8887 looks like.

```
.text, #text, p{  
  color:#AD8887  
}
```

If you want to add a text shadow in that color use the text-shadow property, you can generate a text shadow directly with our [CSS Text Shadow Generator](#).

Here you see how black text with a 4 pixel #AD8887 colored shadow looks like.

```
.shadow{ text-shadow: 4px 4px 2px #AD8887  
}
```

Border

The CSS property to change the border of an element to Decimal 11372679 is called "border". The border property can be set on classes, ids or directly on the HTML element.

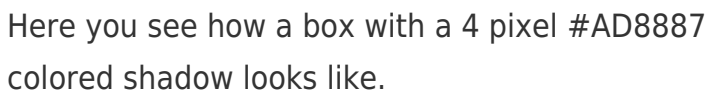
This example shows the color as border, it can be applied via the CSS property "border" or "border-color".

```
.border, #border, table{ border:4px solid  
#AD8887 }
```

If only the border color should be changed use the property `border-color`.

```
.border{ border-color:#AD8887 }
```

If you want to add a box shadow in that color use:



Here you see how a box with a 4 pixel #AD8887 colored shadow looks like.

```
.boxshadow{ -moz-box-shadow:4px 4px 4px  
4px #AD8887; -webkit-box-shadow:4px 4px  
4px 4px #AD8887; box-shadow:4px 4px 4px  
4px #AD8887 }
```

Background

The CSS property to change the background color of an element to Decimal 11372679 is called "background". The background property can be set on classes, ids or directly on the HTML element.

```
.background, #background, body{  
background:#AD8887 }
```

If only the background color should be changed can be used:

```
.background{ background-color:#AD8887 }
```

This example shows the color as background, it is applied via the CSS property "background".

To optimize and compress your CSS code, you can use our [online CSS compressor and optimizer](#) based on csstidy. If you want to create a linear or radial gradient as background or border, check our [CSS Gradient Generator](#).

Hey! You found this booklet interesting? Support Converting Colors with the new Membership Option!

The pro membership hides all ads, plus gives you double the colors in the color bucket, and more awesome pro features!

[Learn more, Memberships starting at \\$2.50/m!](#)

**Follow me
on Twitter!**

@ConvertingColor