

Converting Colors

Decimal(11373704)

Have a look what the booklet for
Decimal(11373704) contains.

Decimal(11373704)	3
<i>Conversions</i>	4
<i>Details</i>	6
<i>Harmonies</i>	11
<i>Previews</i>	23
<i>Color Blindness Simulation</i>	26
<i>CSS Examples</i>	29

Color

Decimal(11373704)

Conversions

Conversions Part 1

Format	Color
Hex	AD8C88
RGB	173, 140, 136
RGB Percent	68%, 55%, 53%
CMY	0.3216, 0.4510, 0.4667
CMYK	0.00, 0.19, 0.21, 0.32
HSL	6°, 18%, 61%
HSV	6°, 21%, 68%
XYZ	31.0556, 29.4180, 27.3340
YIQ	149.4110, 20.9520, 5.7520

Conversions

Conversions Part 2

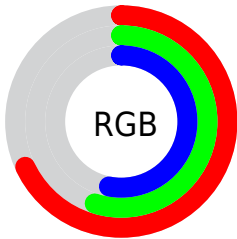
Format	Color
R_{YB}	173, 140, 136
Decimal	11373704
CIE _{Lab}	61.15, 11.84, 6.85
CIE _{LCh}	61, 13.679, 30.043
Yxy	29.4180, 0.3537, 0.3350
Android (android.graphics.Color)	4289563784 (0xFFAD8C88)
YUV	149.4110, -6.6116, 20.6876
Hunter-Lab	54.2383, 7.2878, 8.0870

Details

The Decimal color **11373704** is a dark color, and the websafe version is hex **CC9999**. A complement of this color would be **8956333**, and the grayscale version is **9803157**.

A 20% lighter version of the original color is **15057597**, and **7887446** is the 20% darker color. If you saturate the color by 10%, you get **11369847**, and if you desaturate by 10%, it is **11377561**.

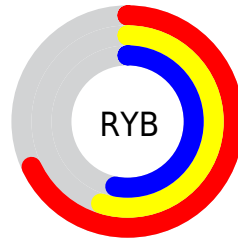
Distribution



Red (68%)

Green (55%)

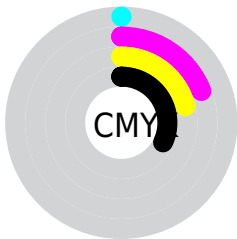
Blue (53%)



Red (68%)

Yellow (55%)

Blue (53%)

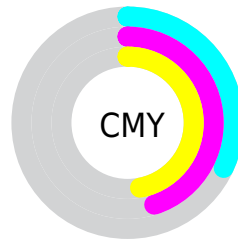


Cyan (0%)

Magenta (19%)

Yellow (21%)

Black (32%)



Cyan (32%)

Magenta (45%)

Yellow (47%)

Brightness & Saturation Gradients

These gradients show how the Decimal color 11373704 changes by changing the brightness by 10 percent. The first figure shows a shift by +10% for each color and the second figure -10%.

Similar to the brightness gradients but the following saturation gradients show a change of the Decimal color 11373704 by changing the saturation by 10% instead.

 11373704

 11373704

16777215

 9597551

 15057597

 7887446

 16768729

 6242879

 16775925

 4598825

 3086101

 1835008

 0

 11373704

 11373704

 11369847

 11377561

 11365733

 11381675

 11361876

 11385532

 11357763

 11389645

 11353905

 11393503

 11349792

 11397616

 11345935

 11401471

 11342592

 11403263

Harmonies

Analogous

The Analogous color harmony consists of three colors that are next to each other on the color wheel.



11307924



11373704



11046783

Triad

The Triadic color harmony groups three colors that are evenly spaced from another and form a triangle on the color wheel.



11373704



8558983



8820139

Complementary

The Complementary color scheme is a pair of colors which are on the opposite of each other on the color wheel.



11373704



8956333

Split Complementary

Split-complementary colors differ from the complementary color scheme. The scheme consists of three colors, the original color and two neighbors of the complement color.



7968936



11373704



7904147

Square

The Square scheme is like the rectangle color scheme, but the four colors are evenly spaced on the color wheel.



11373704



9475967



7641759



9867432

Rectangle

The Rectangle color scheme consists of four colors that form a rectangle on the color wheel.



11373704



10588540



7641759



8492715

Sweetspot

The Sweet Spot groups the original color and five complimentary colors.



11373704



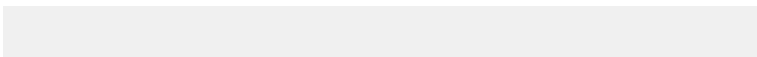
14734547



11372713



7367016



15790320



7368816

Same Dimension

The Same Dimension uses a secret algorithm to generate beautiful new colors.



11373704



14724262



11378312



5721934



9834496



1507840

Inverse Universe

The Inverse Universe completely reimagines the original color for something new.



8956333



10935008



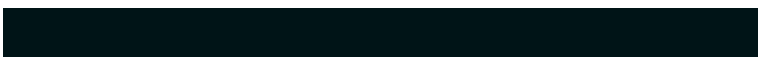
8951725



5133911



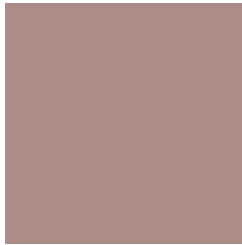
34454



5143

Previews

White Background



This preview shows how the Decimal color 11373704 looks on a white background.

Color Contrast Check

Large Text (above 18pt) WCAG AA ✓ Pass

Any Text WCAG AA × Fail

Large Text (above 18pt) WCAG AAA × Fail

Any Text WCAG AAA × Fail

Black Background



This preview shows how the Decimal color 11373704 looks on a black background.

Color Contrast Check

Large Text (above 18pt) WCAG AA ✓ Pass

Any Text WCAG AA ✓ Pass

Large Text (above 18pt) WCAG AAA ✓ Pass

Any Text WCAG AAA × Fail

If you want to check with other color combinations, try the [Color Contrast Checker](#).

Decimal 11373704 Background



This preview shows how black text looks on a background with the Decimal color 11373704.



This preview shows how white text looks on a background with the Decimal color 11373704.

Color Blindness Simulation

Color vision deficiency is a very complex topic, and I could not describe the different causes any better than Wikipedia does, so if you want to learn more, you should check out their [article about color blindness](#).

Dichromacy



Original Color
11373704

Protanopia
9999244

Deuteranopia
10981256



Tritanopia
11504277

Trichromacy



Original Color
11373704

Protanomaly
10522763

Deuteranomaly
11112072

Tritanomaly
11438992

Monochromacy



Original Color
11373704

Achromatopsia
9803157

Achromatomaly
10392208

CSS Examples

Text

The CSS property to change the color of the text to Decimal 11373704 is called "color". The color property can be set on classes, ids or directly on the HTML element.

This example shows how text in the color #AD8C88 looks like.

```
.text, #text, p{  
    color:#AD8C88  
}
```

If you want to add a text shadow in that color use the text-shadow property, you can generate a text shadow directly with our [CSS Text Shadow Generator](#).

Here you see how black text with a 4 pixel #AD8C88 colored shadow looks like.

```
.shadow{ text-shadow: 4px 4px 2px #AD8C88  
}
```

Border

The CSS property to change the border of an element to Decimal 11373704 is called "border". The border property can be set on classes, ids or directly on the HTML element.

This example shows the color as border, it can be applied via the CSS property "border" or "border-color".

```
.border, #border, table{ border:4px solid  
#AD8C88 }
```

If only the border color should be changed use the property `border-color`.

```
.border{ border-color:#AD8C88 }
```

If you want to add a box shadow in that color use:

Here you see how a box with a 4 pixel #AD8C88 colored shadow looks like.

```
.boxshadow{ -moz-box-shadow:4px 4px 4px  
4px #AD8C88; -webkit-box-shadow:4px 4px  
4px 4px #AD8C88; box-shadow:4px 4px 4px  
4px #AD8C88 }
```

Background

The CSS property to change the background color of an element to Decimal 11373704 is called "background". The background property can be set on classes, ids or directly on the HTML element.

```
.background, #background, body{  
background:#AD8C88 }
```

If only the background color should be changed can be used:

```
.background{ background-color:#AD8C88 }
```

This example shows the color as background, it is applied via the CSS property "background".

To optimize and compress your CSS code, you can use our [online CSS compressor and optimizer](#) based on csstidy. If you want to create a linear or radial gradient as background or border, check our [CSS Gradient Generator](#).

Hey! You found this booklet interesting? Support Converting Colors with the new Membership Option!

The pro membership hides all ads, plus gives you double the colors in the color bucket, and more awesome pro features!

[Learn more, Memberships starting at \\$2.50/m!](#)

**Follow me
on Twitter!**

@ConvertingColor