

Converting Colors

Decimal(11376798)

Have a look what the booklet for
Decimal(11376798) contains.

Decimal(11376798)	3
<i>Conversions</i>	4
<i>Details</i>	6
<i>Harmonies</i>	11
<i>Previews</i>	23
<i>Color Blindness Simulation</i>	26
<i>CSS Examples</i>	29

Color

Decimal(11376798)

Conversions

Conversions Part 1

Format	Color
Hex	AD989E
RGB	173, 152, 158
RGB Percent	68%, 60%, 62%
CMY	0.3216, 0.4039, 0.3804
CMYK	0.00, 0.12, 0.09, 0.32
HSL	343°, 11%, 64%
HSV	343°, 12%, 68%
XYZ	34.6334, 33.8093, 37.0482
YIQ	158.9630, 10.5900, 6.3180

Conversions

Conversions Part 2

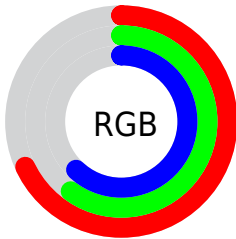
Format	Color
RYB	173, 152, 158
Decimal	11376798
CIELab	64.81, 8.80, -0.30
CIELCh	65, 8.808, 358.070
Yxy	33.8093, 0.3283, 0.3205
Android (android.graphics.Color)	4289566878 (0xFFAD989E)
YUV	158.9630, -0.4748, 12.3104
Hunter-Lab	58.1458, 4.5648, 2.9248

Details

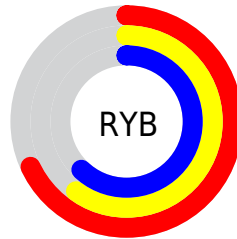
The Decimal color **11376798** is a light color, and the websafe version is hex **999999**. A complement of this color would be **10005927**, and the grayscale version is **10461087**.

A 20% lighter version of the original color is **15060693**, and **7955819** is the 20% darker color. If you saturate the color by 10%, you get **11372434**, and if you desaturate by 10%, it is **11381162**.

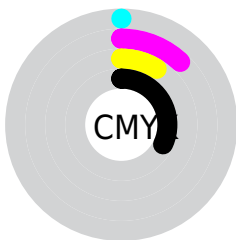
Distribution



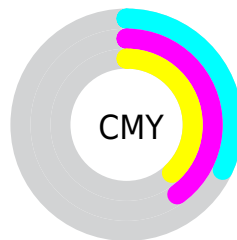
- Red (68%)
- Green (60%)
- Blue (62%)



- Red (68%)
- Yellow (60%)
- Blue (62%)



- Cyan (0%)
- Magenta (12%)
- Yellow (9%)
- Black (32%)



- Cyan (32%)
- Magenta (40%)
- Yellow (38%)

Brightness & Saturation Gradients

These gradients show how the Decimal color 11376798 changes by changing the brightness by 10 percent. The first figure shows a shift by +10% for each color and the second figure -10%.

Similar to the brightness gradients but the following saturation gradients show a change of the Decimal color 11376798 by changing the saturation by 10% instead.

■ 11376798

■ 11376798

16777215

■ 9600644

■ 15060693

■ 7955819

■ 16771825

■ 6311251

■ 4732476

■ 3219750

■ 1903377

■ 0

■ 11376798

■ 11376798

■ 11372434

■ 11381162

 11367813

 11385783


 11363449

 11390147

 11359085

 11394511

 11354720

 11399132

 11350100

 11403240

 11345736

 11403252

 11341371

 11403263

 11337777

Harmonies

Analogous

The Analogous color harmony consists of three colors that are next to each other on the color wheel.



10983846



11376798



11442326

Triad

The Triadic color harmony groups three colors that are evenly spaced from another and form a triangle on the color wheel.



11376798



10264463



9281706

Complementary

The Complementary color scheme is a pair of colors which are on the opposite of each other on the color wheel.



11376798



10005927

Split Complementary

Split-complementary colors differ from the complementary color scheme. The scheme consists of three colors, the original color and two neighbors of the complement color.



9085604



11376798



9675157

Square

The Square scheme is like the rectangle color scheme, but the four colors are evenly spaced on the color wheel.



11376798



10787982



9216668



9805485

Rectangle

The Rectangle color scheme consists of four colors that form a rectangle on the color wheel.



11376798



11377042



9216668



9150889

Sweetspot

The Sweet Spot groups the original color and five complimentary colors.



11376798



14735322



10983597



7367532



15790320



7368816

Same Dimension

The Same Dimension uses a secret algorithm to generate beautiful new colors.



11376798



14729160



11377816



5721681



9830443



1507335

Inverse Universe

The Inverse Universe completely reimagines the original color for something new.



11376798



14729160



10004909



5721681



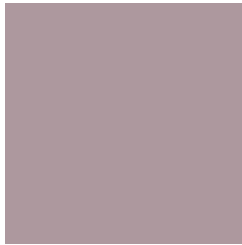
9830443



1507335

Previews

White Background



This preview shows how the Decimal color 11376798 looks on a white background.

Color Contrast Check

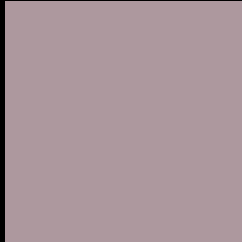
Large Text (above 18pt) WCAG AA × Fail

Any Text WCAG AA × Fail

Large Text (above 18pt) WCAG AAA × Fail

Any Text WCAG AAA × Fail

Black Background



This preview shows how the Decimal color 11376798 looks on a black background.

Color Contrast Check

Large Text (above 18pt) WCAG AA ✓ Pass

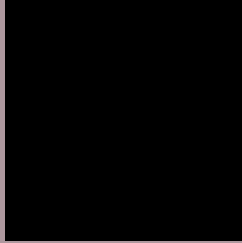
Any Text WCAG AA ✓ Pass

Large Text (above 18pt) WCAG AAA ✓ Pass

Any Text WCAG AAA ✓ Pass

If you want to check with other color combinations, try the [Color Contrast Checker](#).

Decimal 11376798 Background



This preview shows how black text looks on a background with the Decimal color 11376798.



This preview shows how white text looks on a background with the Decimal color 11376798.

Color Blindness Simulation

Color vision deficiency is a very complex topic, and I could not describe the different causes any better than Wikipedia does, so if you want to learn more, you should check out their [article about color blindness](#).

Dichromacy



Original Color
11376798

Protanopia
10460321

Deuteranopia
11311262



Tritanopia
11442083

Trichromacy



Original Color
11376798

Protanomaly
10787744

Deuteranomaly
11311262

Tritanomaly
11442081

Monochromacy



Original Color
11376798

Achromatopsia
10461087

Achromatomaly
10787999

CSS Examples

Text

The CSS property to change the color of the text to Decimal 11376798 is called "color". The color property can be set on classes, ids or directly on the HTML element.

This example shows how text in the color #AD989E looks like.

```
.text, #text, p{  
  color:#AD989E  
}
```

If you want to add a text shadow in that color use the text-shadow property, you can generate a text shadow directly with our [CSS Text Shadow Generator](#).

Here you see how black text with a 4 pixel #AD989E colored shadow looks like.

```
.shadow{ text-shadow: 4px 4px 2px #AD989E
}
```

Border

The CSS property to change the border of an element to Decimal 11376798 is called "border". The border property can be set on classes, ids or directly on the HTML element.

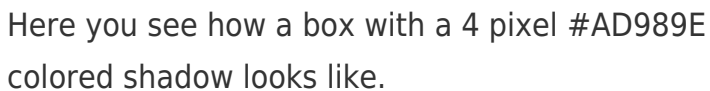
This example shows the color as border, it can be applied via the CSS property "border" or "border-color".

```
.border, #border, table{ border:4px solid
#AD989E }
```

If only the border color should be changed use the property `border-color`.

```
.border{ border-color:#AD989E }
```

If you want to add a box shadow in that color use:



Here you see how a box with a 4 pixel #AD989E colored shadow looks like.

```
.boxshadow{ -moz-box-shadow:4px 4px 4px  
4px #AD989E; -webkit-box-shadow:4px 4px  
4px 4px #AD989E; box-shadow:4px 4px 4px  
4px #AD989E }
```

Background

The CSS property to change the background color of an element to Decimal 11376798 is called "background". The background property can be set on classes, ids or directly on the HTML element.

```
.background, #background, body{  
background:#AD989E }
```

If only the background color should be changed can be used:

```
.background{ background-color:#AD989E }
```

This example shows the color as background, it is applied via the CSS property "background".

To optimize and compress your CSS code, you can use our [online CSS compressor and optimizer](#) based on csstidy. If you want to create a linear or radial gradient as background or border, check our [CSS Gradient Generator](#).

Hey! You found this booklet interesting? Support Converting Colors with the new Membership Option!

The pro membership hides all ads, plus gives you double the colors in the color bucket, and more awesome pro features!

[Learn more, Memberships starting at \\$2.50/m!](#)

**Follow me
on Twitter!**

@ConvertingColor