

Converting Colors

Decimal(11427673)

Have a look what the booklet for
Decimal(11427673) contains.

Decimal(11427673)	3
<i>Conversions</i>	4
<i>Details</i>	6
<i>Harmonies</i>	11
<i>Previews</i>	23
<i>Color Blindness Simulation</i>	26
<i>CSS Examples</i>	29

Color

Decimal(11427673)

Conversions

Conversions Part 1

Format	Color
Hex	AE5F59
RGB	174, 95, 89
RGB Percent	68%, 37%, 35%
CMY	0.3176, 0.6275, 0.6510
CMYK	0.00, 0.45, 0.49, 0.32
HSL	4°, 34%, 52%
HSV	4°, 49%, 68%
XYZ	23.3509, 17.9044, 11.6764
YIQ	117.9370, 49.0100, 14.8820

Conversions

Conversions Part 2

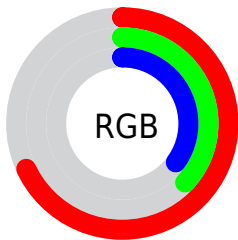
Format	Color
RYB	174, 95, 89
Decimal	11427673
CIELab	49.38, 31.34, 17.70
CIElCh	49, 35.999, 29.459
Yxy	17.9044, 0.4412, 0.3383
Android (android.graphics.Color)	4289617753 (0xFFAE5F59)
YUV	117.9370, -14.2659, 49.1673
Hunter-Lab	42.3135, 24.4574, 13.2585

Details

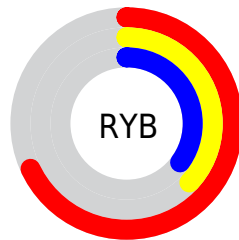
The Decimal color **11427673** is a dark color, and the websafe version is hex **CC6666**. A complement of this color would be **5875886**, and the grayscale version is **7763574**.

A 20% lighter version of the original color is **15242123**, and **7745067** is the 20% darker color. If you saturate the color by 10%, you get **11423560**, and if you desaturate by 10%, it is **11431786**.

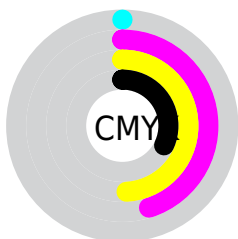
Distribution



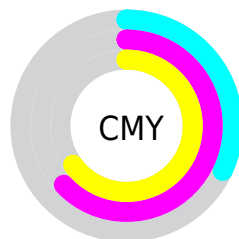
- Red (68%)
- Green (37%)
- Blue (35%)



- Red (68%)
- Yellow (37%)
- Blue (35%)



- Cyan (0%)
- Magenta (45%)
- Yellow (49%)
- Black (32%)



- Cyan (32%)
- Magenta (63%)
- Yellow (65%)

Brightness & Saturation Gradients

These gradients show how the Decimal color 11427673 changes by changing the brightness by 10 percent. The first figure shows a shift by +10% for each color and the second figure -10%.

Similar to the brightness gradients but the following saturation gradients show a change of the Decimal color 11427673 by changing the saturation by 10% instead.

 11427673

 11427673

16777215

 9586242

 15242123

 7745067

 16756389

 5969431

 16763584

 4259840

 16770780

 2752513

 16777209

 0

 11427673

 11427673

 11423560

 11431786

 11419446

 11435900

■ 11415077

■ 11440269

■ 11410963

■ 11444383

■ 11406850

■ 11448496

■ 11406336

■ 11452609

■ 11456723

■ 11460836

■ 11465206

Harmonies

Analogous

The Analogous color harmony consists of three colors that are next to each other on the color wheel.



11361399



11427673



10512449

Triad

The Triadic color harmony groups three colors that are evenly spaced from another and form a triangle on the color wheel.



11427673



4424277



4225458

Complementary

The Complementary color scheme is a pair of colors which are on the opposite of each other on the color wheel.



11427673



5875886

Split Complementary

Split-complementary colors differ from the complementary color scheme. The scheme consists of three colors, the original color and two neighbors of the complement color.



33193



11427673



34164

Square

The Square scheme is like the rectangle color scheme, but the four colors are evenly spaced on the color wheel.



11427673



6913086



33938



7827115

Rectangle

The Rectangle color scheme consists of four colors that form a rectangle on the color wheel.



11427673



9531448



33938



2391217

Sweetspot

The Sweet Spot groups the original color and five complimentary colors.



11427673



14926785



11426216



7561310



15921906



7566195

Same Dimension

The Same Dimension uses a secret algorithm to generate beautiful new colors.



11427673



14903133



11438425



5721934



9833216



1507840

Inverse Universe

The Inverse Universe completely reimagines the original color for something new.



5875886



6150627



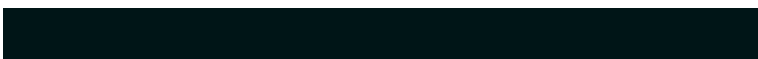
5865134



5133911



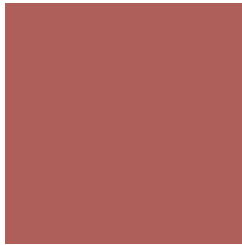
35990



5399

Previews

White Background



This preview shows how the Decimal color 11427673 looks on a white background.

Color Contrast Check

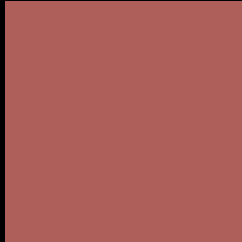
Large Text (above 18pt) WCAG AA ✓ Pass

Any Text WCAG AA ✓ Pass

Large Text (above 18pt) WCAG AAA ✓ Pass

Any Text WCAG AAA × Fail

Black Background



This preview shows how the Decimal color 11427673 looks on a black background.

Color Contrast Check

Large Text (above 18pt) WCAG AA ✓ Pass

Any Text WCAG AA ✓ Pass

Large Text (above 18pt) WCAG AAA ✓ Pass

Any Text WCAG AAA × Fail

If you want to check with other color combinations, try the [Color Contrast Checker](#).

Decimal 11427673 Background



This preview shows how black text looks on a background with the Decimal color 11427673.

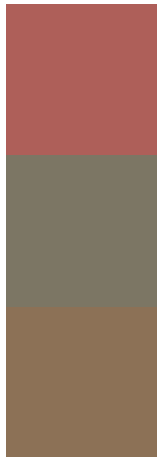


This preview shows how white text looks on a background with the Decimal color 11427673.

Color Blindness Simulation

Color vision deficiency is a very complex topic, and I could not describe the different causes any better than Wikipedia does, so if you want to learn more, you should check out their [article about color blindness](#).

Dichromacy



Original Color
11427673

Protanopia
8156772

Deuteranopia
9204054



Tritanopia
11492708

Trichromacy



Original Color
11427673

Protanomaly
9334368

Deuteranomaly
9988695

Tritanomaly
11492960

Monochromacy



Original Color
11427673

Achromatopsia
7763574

Achromatomaly
9072235

CSS Examples

Text

The CSS property to change the color of the text to Decimal 11427673 is called "color". The color property can be set on classes, ids or directly on the HTML element.

This example shows how text in the color #AE5F59 looks like.

```
.text, #text, p{  
  color:#AE5F59  
}
```

If you want to add a text shadow in that color use the text-shadow property, you can generate a text shadow directly with our [CSS Text Shadow Generator](#).

Here you see how black text with a 4 pixel #AE5F59 colored shadow looks like.

```
.shadow{ text-shadow: 4px 4px 2px #AE5F59
}
```

Border

The CSS property to change the border of an element to Decimal 11427673 is called "border". The border property can be set on classes, ids or directly on the HTML element.

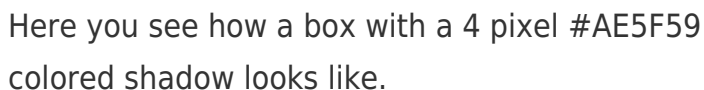
This example shows the color as border, it can be applied via the CSS property "border" or "border-color".

```
.border, #border, table{ border:4px solid
#AE5F59 }
```

If only the border color should be changed use the property `border-color`.

```
.border{ border-color:#AE5F59 }
```

If you want to add a box shadow in that color use:



Here you see how a box with a 4 pixel `#AE5F59` colored shadow looks like.

```
.boxshadow{ -moz-box-shadow:4px 4px 4px  
4px #AE5F59; -webkit-box-shadow:4px 4px  
4px 4px #AE5F59; box-shadow:4px 4px 4px  
4px #AE5F59 }
```

Background

The CSS property to change the background color of an element to Decimal 11427673 is called "background". The background property can be set on classes, ids or directly on the HTML element.

```
.background, #background, body{  
background:#AE5F59 }
```

If only the background color should be changed can be used:

```
.background{ background-color:#AE5F59 }
```

This example shows the color as background, it is applied via the CSS property "background".

To optimize and compress your CSS code, you can use our [online CSS compressor and optimizer](#) based on csstidy. If you want to create a linear or radial gradient as background or border, check our [CSS Gradient Generator](#).

Hey! You found this booklet interesting? Support Converting Colors with the new Membership Option!

The pro membership hides all ads, plus gives you double the colors in the color bucket, and more awesome pro features!

[Learn more, Memberships starting at \\$2.50/m!](#)

**Follow me
on Twitter!**

@ConvertingColor