

Converting Colors

Decimal(11433596)

Have a look what the booklet for
Decimal(11433596) contains.

Decimal(11433596)	3
<i>Conversions</i>	4
<i>Details</i>	6
<i>Harmonies</i>	11
<i>Previews</i>	23
<i>Color Blindness Simulation</i>	26
<i>CSS Examples</i>	29

Color

Decimal(11433596)

Conversions

Conversions Part 1

Format	Color
Hex	AE767C
RGB	174, 118, 124
RGB Percent	68%, 46%, 49%
CMY	0.3176, 0.5373, 0.5137
CMYK	0.00, 0.32, 0.29, 0.32
HSL	354°, 26%, 57%
HSV	354°, 32%, 68%
XYZ	27.5721, 23.4108, 22.1343
YIQ	135.4280, 31.4500, 13.7380

Conversions

Conversions Part 2

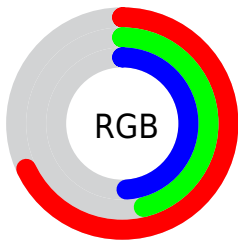
Format	Color
RYB	174, 118, 124
Decimal	11433596
CIELab	55.49, 22.83, 5.67
CIELCh	55, 23.522, 13.938
Yxy	23.4108, 0.3771, 0.3202
Android (android.graphics.Color)	4289623676 (0xFFAE767C)
YUV	135.4280, -5.6340, 33.8276
Hunter-Lab	48.3847, 17.0453, 6.7462

Details

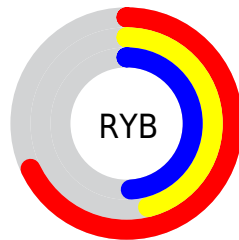
The Decimal color **11433596** is a dark color, and the websafe version is hex **996666**. A complement of this color would be **7777960**, and the grayscale version is **8882055**.

A 20% lighter version of the original color is **15182768**, and **7882059** is the 20% darker color. If you saturate the color by 10%, you get **11429228**, and if you desaturate by 10%, it is **11437964**.

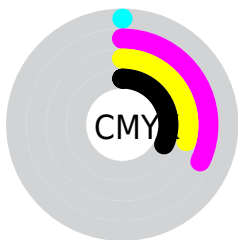
Distribution



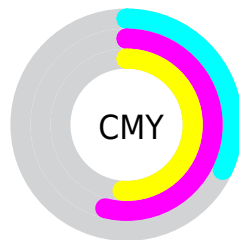
- Red (68%)
- Green (46%)
- Blue (49%)



- Red (68%)
- Yellow (46%)
- Blue (49%)



- Cyan (0%)
- Magenta (32%)
- Yellow (29%)
- Black (32%)



- Cyan (32%)
- Magenta (54%)
- Yellow (51%)

Brightness & Saturation Gradients

These gradients show how the Decimal color 11433596 changes by changing the brightness by 10 percent. The first figure shows a shift by +10% for each color and the second figure -10%.

Similar to the brightness gradients but the following saturation gradients show a change of the Decimal color 11433596 by changing the saturation by 10% instead.

 11433596

 11433596

16777215

 9657699

 15182768

 7882059

 16762572

 6172213


 16769768

 4527904

 3014919

 589824

 0

 11433596

 11433596

 11429228

 11437964

■ 11424605

■ 11442587

■ 11420237

■ 11446955

■ 11415614

■ 11451578

■ 11411246

■ 11455946

■ 11406879

■ 11460313

■ 11403283

■ 11464937

■ 11468792

■ 11468799

Harmonies

Analogous

The Analogous color harmony consists of three colors that are next to each other on the color wheel.



10909585



11433596



11172458

Triad

The Triadic color harmony groups three colors that are evenly spaced from another and form a triangle on the color wheel.



11433596



7572583



6064812

Complementary

The Complementary color scheme is a pair of colors which are on the opposite of each other on the color wheel.



11433596



7777960

Split Complementary

Split-complementary colors differ from the complementary color scheme. The scheme consists of three colors, the original color and two neighbors of the complement color.



4755105



11433596



6066041

Square

The Square scheme is like the rectangle color scheme, but the four colors are evenly spaced on the color wheel.



11433596



9078621



4821134



7963820

Rectangle

The Rectangle color scheme consists of four colors that form a rectangle on the color wheel.



11433596



10714721



4821134



5475497

Sweetspot

The Sweet Spot groups the original color and five complimentary colors.



11433596



14929103



10974894



7562598



15921906



7566195

Same Dimension

The Same Dimension uses a secret algorithm to generate beautiful new colors.



11433596



14912148



11438966



5721679



9830416



1507330

Inverse Universe

The Inverse Universe completely reimagines the original color for something new.



11433596



14912148



7772590



5721679



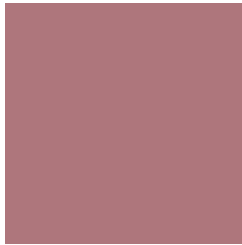
9830416



1507330

Previews

White Background



This preview shows how the Decimal color 11433596 looks on a white background.

Color Contrast Check

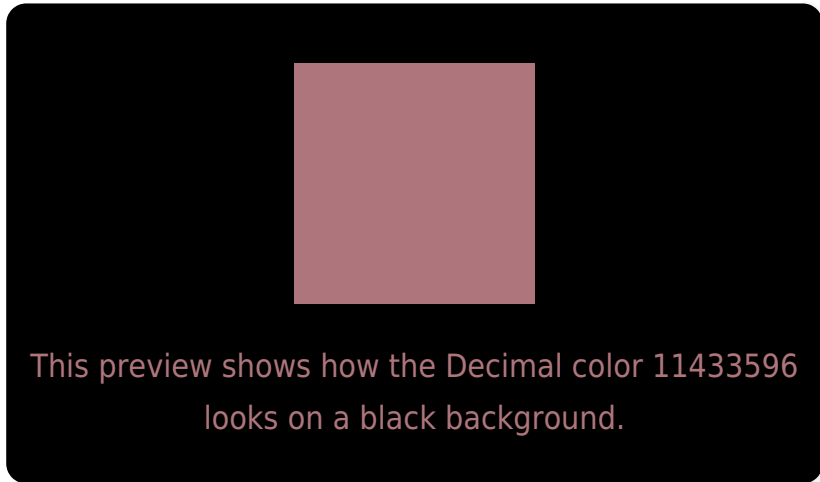
Large Text (above 18pt) WCAG AA ✓ Pass

Any Text WCAG AA × Fail

Large Text (above 18pt) WCAG AAA × Fail

Any Text WCAG AAA × Fail

Black Background



Color Contrast Check

Large Text (above 18pt) WCAG AA ✓ Pass

Any Text WCAG AA ✓ Pass

Large Text (above 18pt) WCAG AAA ✓ Pass

Any Text WCAG AAA × Fail

If you want to check with other color combinations, try the [Color Contrast Checker](#).

Decimal 11433596 Background



This preview shows how black text looks on a background with the Decimal color 11433596.




This preview shows how white text looks on a background with the Decimal color 11433596.

Color Blindness Simulation

Color vision deficiency is a very complex topic, and I could not describe the different causes any better than Wikipedia does, so if you want to learn more, you should check out their [article about color blindness](#).

Dichromacy





Tritanopia
11433599

Trichromacy



Original Color
11433596

Protanomaly
9863297

Deuteranomaly
10452347

Tritanomaly
11433598

Monochromacy



Original Color
11433596

Achromatopsia
8882055

Achromatomaly
9798019

CSS Examples

Text

The CSS property to change the color of the text to Decimal 11433596 is called "color". The color property can be set on classes, ids or directly on the HTML element.

This example shows how text in the color #AE767C looks like.

```
.text, #text, p{  
  color:#AE767C  
}
```

If you want to add a text shadow in that color use the text-shadow property, you can generate a text shadow directly with our [CSS Text Shadow Generator](#).

Here you see how black text with a 4 pixel #AE767C colored shadow looks like.

```
.shadow{ text-shadow: 4px 4px 2px #AE767C  
}
```

Border

The CSS property to change the border of an element to Decimal 11433596 is called "border". The border property can be set on classes, ids or directly on the HTML element.

This example shows the color as border, it can be applied via the CSS property "border" or "border-color".

```
.border, #border, table{ border:4px solid  
#AE767C }
```

If only the border color should be changed use the property `border-color`.

```
.border{ border-color:#AE767C }
```

If you want to add a box shadow in that color use:

Here you see how a box with a 4 pixel #AE767C colored shadow looks like.

```
.boxshadow{ -moz-box-shadow:4px 4px 4px  
4px #AE767C; -webkit-box-shadow:4px 4px  
4px 4px #AE767C; box-shadow:4px 4px 4px  
4px #AE767C }
```

Background

The CSS property to change the background color of an element to Decimal 11433596 is called "background". The background property can be set on classes, ids or directly on the HTML element.

```
.background, #background, body{  
background:#AE767C }
```

If only the background color should be changed can be used:

```
.background{ background-color:#AE767C }
```

This example shows the color as background, it is applied via the CSS property "background".

To optimize and compress your CSS code, you can use our [online CSS compressor and optimizer](#) based on csstidy. If you want to create a linear or radial gradient as background or border, check our [CSS Gradient Generator](#).

Hey! You found this booklet interesting? Support Converting Colors with the new Membership Option!

The pro membership hides all ads, plus gives you double the colors in the color bucket, and more awesome pro features!

[Learn more, Memberships starting at \\$2.50/m!](#)

**Follow me
on Twitter!**

@ConvertingColor