

Converting Colors

Decimal(11434579)

Have a look what the booklet for
Decimal(11434579) contains.

Decimal(11434579)	3
<i>Conversions</i>	4
<i>Details</i>	6
<i>Harmonies</i>	11
<i>Previews</i>	23
<i>Color Blindness Simulation</i>	26
<i>CSS Examples</i>	29

Color

Decimal(11434579)

Conversions

Conversions Part 1

Format	Color
Hex	AE7A53
RGB	174, 122, 83
RGB Percent	68%, 48%, 33%
CMY	0.3176, 0.5216, 0.6745
CMYK	0.00, 0.30, 0.52, 0.32
HSL	26°, 36%, 50%
HSV	26°, 52%, 68%
XYZ	25.9764, 23.5423, 11.3586
YIQ	133.1020, 43.5110, -1.1050

Conversions

Conversions Part 2

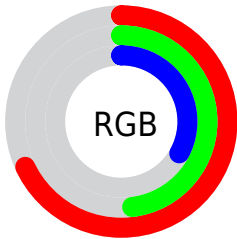
Format	Color
RYB	174, 151, 83
Decimal	11434579
CIELab	55.63, 15.74, 29.34
CIELCh	56, 33.300, 61.789
Yxy	23.5423, 0.4267, 0.3867
Android (android.graphics.Color)	4289624659 (0xFFAE7A53)
YUV	133.1020, -24.7003, 35.8675
Hunter-Lab	48.5204, 10.6531, 20.0845

Details

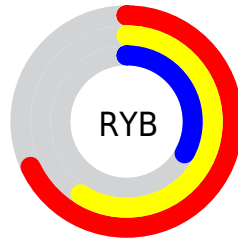
The Decimal color **11434579** is a dark color, and the websafe version is hex **996633**. A complement of this color would be **5474222**, and the grayscale version is **8750469**.

A 20% lighter version of the original color is **15249285**, and **7817509** is the 20% darker color. If you saturate the color by 10%, you get **11432002**, and if you desaturate by 10%, it is **11437156**.

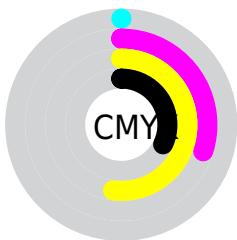
Distribution



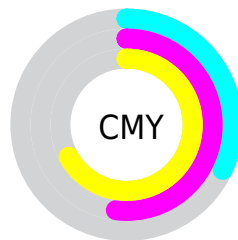
- Red (68%)
- Green (48%)
- Blue (33%)



- Red (68%)
- Yellow (59%)
- Blue (33%)



- Cyan (0%)
- Magenta (30%)
- Yellow (52%)
- Black (32%)



- Cyan (32%)
- Magenta (52%)
- Yellow (67%)

Brightness & Saturation Gradients

These gradients show how the Decimal color 11434579 changes by changing the brightness by 10 percent. The first figure shows a shift by +10% for each color and the second figure -10%.

Similar to the brightness gradients but the following saturation gradients show a change of the Decimal color 11434579 by changing the saturation by 10% instead.


 11434579

 11434579

16777215

 9593147

 15249285

 7817509

 16763551

 6042127

 16770747

 4398336

 16777174


 2688768

 16777203

 0

 11434579

 11434579

 11432002

 11437156

 11429424

 11439734

■ 11426847

■ 11442311

■ 11424269

■ 11444889

■ 11422464

■ 11447466

■ 11450043

■ 11452621

■ 11455198

■ 11457520

Harmonies

Analogous

The Analogous color harmony consists of three colors that are next to each other on the color wheel.



12349800



11434579



9864267

Triad

The Triadic color harmony groups three colors that are evenly spaced from another and form a triangle on the color wheel.



11434579



2725254



9141686

Complementary

The Complementary color scheme is a pair of colors which are on the opposite of each other on the color wheel.



11434579



5474222

Split Complementary

Split-complementary colors differ from the complementary color scheme. The scheme consists of three colors, the original color and two neighbors of the complement color.



6129855



11434579



38051

Square

The Square scheme is like the rectangle color scheme, but the four colors are evenly spaced on the color wheel.



11434579



5608041



2199479



11236257

Rectangle

The Rectangle color scheme consists of four colors that form a rectangle on the color wheel.



11434579



8620622



2199479



8225211

Sweetspot

The Sweet Spot groups the original color and five complimentary colors.



11434579



14929599



11424648



7562845



15921906



7566195

Same Dimension

The Same Dimension uses a secret algorithm to generate beautiful new colors.



11434579



14913876



11445843



5722702



9846784



1509888

Inverse Universe

The Inverse Universe completely reimagines the original color for something new.



5474222



5547747



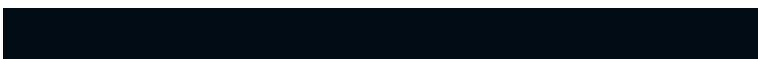
5462958



5133143



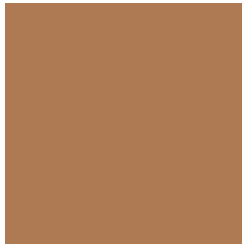
22166



3351

Previews

White Background



This preview shows how the Decimal color 11434579 looks on a white background.

Color Contrast Check

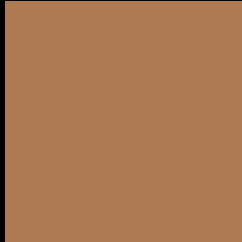
Large Text (above 18pt) WCAG AA ✓ Pass

Any Text WCAG AA × Fail

Large Text (above 18pt) WCAG AAA × Fail

Any Text WCAG AAA × Fail

Black Background



This preview shows how the Decimal color 11434579 looks on a black background.

Color Contrast Check

Large Text (above 18pt) WCAG AA ✓ Pass

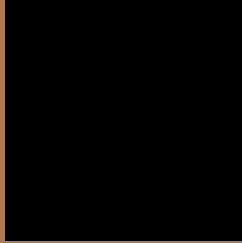
Any Text WCAG AA ✓ Pass

Large Text (above 18pt) WCAG AAA ✓ Pass

Any Text WCAG AAA × Fail

If you want to check with other color combinations, try the [Color Contrast Checker](#).

Decimal 11434579 Background



This preview shows how black text looks on a background with the Decimal color 11434579.



This preview shows how white text looks on a background with the Decimal color 11434579.

Color Blindness Simulation

Color vision deficiency is a very complex topic, and I could not describe the different causes any better than Wikipedia does, so if you want to learn more, you should check out their [article about color blindness](#).


Dichromacy



Original Color
11434579

Protanopia
9537112

Deuteranopia
10649682



Tritanopia
11629949

Trichromacy



Original Color
11434579

Protanomaly
10256982

Deuteranomaly
10911314

Tritanomaly
11564910

Monochromacy



Original Color
11434579

Achromatopsia
8750469

Achromatomaly
9732467

CSS Examples

Text

The CSS property to change the color of the text to Decimal 11434579 is called "color". The color property can be set on classes, ids or directly on the HTML element.

This example shows how text in the color #AE7A53 looks like.

```
.text, #text, p{  
    color:#AE7A53  
}
```

If you want to add a text shadow in that color use the text-shadow property, you can generate a text shadow directly with our [CSS Text Shadow Generator](#).

Here you see how black text with a 4 pixel #AE7A53 colored shadow looks like.

```
.shadow{ text-shadow: 4px 4px 2px #AE7A53
}
```

Border

The CSS property to change the border of an element to Decimal 11434579 is called "border". The border property can be set on classes, ids or directly on the HTML element.

This example shows the color as border, it can be applied via the CSS property "border" or "border-color".

```
.border, #border, table{ border:4px solid
#AE7A53 }
```

If only the border color should be changed use the property `border-color`.

```
.border{ border-color:#AE7A53 }
```

If you want to add a box shadow in that color use:

Here you see how a box with a 4 pixel #AE7A53 colored shadow looks like.

```
.boxshadow{ -moz-box-shadow:4px 4px 4px  
4px #AE7A53; -webkit-box-shadow:4px 4px  
4px 4px #AE7A53; box-shadow:4px 4px 4px  
4px #AE7A53 }
```

Background

The CSS property to change the background color of an element to Decimal 11434579 is called "background". The background property can be set on classes, ids or directly on the HTML element.

```
.background, #background, body{  
background:#AE7A53 }
```

If only the background color should be changed can be used:

```
.background{ background-color:#AE7A53 }
```

This example shows the color as background, it is applied via the CSS property "background".

To optimize and compress your CSS code, you can use our [online CSS compressor and optimizer](#) based on csstidy. If you want to create a linear or radial gradient as background or border, check our [CSS Gradient Generator](#).

Hey! You found this booklet interesting? Support Converting Colors with the new Membership Option!

The pro membership hides all ads, plus gives you double the colors in the color bucket, and more awesome pro features!

[Learn more, Memberships starting at \\$2.50/m!](#)

**Follow me
on Twitter!**

@ConvertingColor