

# Converting Colors

Decimal(11435146)

Have a look what the booklet for  
Decimal(11435146) contains.

<b>Decimal(11435146)</b> .....	3
<i><b>Conversions</b></i> .....	4
<i><b>Details</b></i> .....	6
<i><b>Harmonies</b></i> .....	11
<i><b>Previews</b></i> .....	23
<i><b>Color Blindness Simulation</b></i> .....	26
<i><b>CSS Examples</b></i> .....	29

# Color

**Decimal(11435146)**

# Conversions

## Conversions Part 1

<b>Format</b>	<b>Color</b>
Hex	AE7C8A
RGB	174, 124, 138
RGB Percent	68%, 49%, 54%
CMY	0.3176, 0.5137, 0.4588
CMYK	0.00, 0.29, 0.21, 0.32
HSL	343°, 24%, 58%
HSV	343°, 29%, 68%
XYZ	29.2507, 25.2490, 27.3766
YIQ	140.5460, 25.3060, 14.9540

# Conversions

## Conversions Part 2

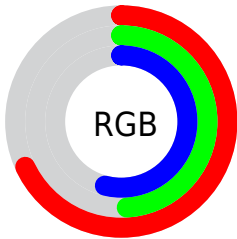
<b>Format</b>	<b>Color</b>
<b>RYB</b>	174, 124, 138
Decimal	11435146
CIELab	57.32, 21.55, 0.18
CIElCh	57, 21.552, 0.470
Yxy	25.2490, 0.3573, 0.3084
Android (android.graphics.Color)	4289625226 (0xFFAE7C8A)
YUV	140.5460, -1.2552, 29.3392
Hunter-Lab	50.2483, 15.9742, 2.8711

# Details

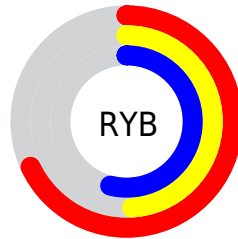
The Decimal color **11435146** is a dark color, and the websafe version is hex **996666**. A complement of this color would be **8171168**, and the grayscale version is **9276813**.

A 20% lighter version of the original color is **15118783**, and **7949144** is the 20% darker color. If you saturate the color by 10%, you get **11430781**, and if you desaturate by 10%, it is **11439511**.

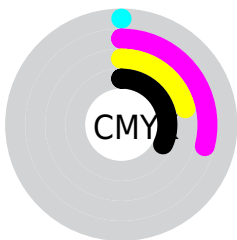
# Distribution



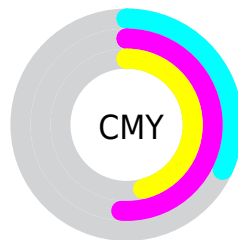
- Red (68%)
- Green (49%)
- Blue (54%)



- Red (68%)
- Yellow (49%)
- Blue (54%)



- Cyan (0%)
- Magenta (29%)
- Yellow (21%)
- Black (32%)



- Cyan (32%)
- Magenta (51%)
- Yellow (46%)

# Brightness & Saturation Gradients

These gradients show how the Decimal color 11435146 changes by changing the brightness by 10 percent. The first figure shows a shift by +10% for each color and the second figure -10%.

Similar to the brightness gradients but the following saturation gradients show a change of the Decimal color 11435146 by changing the saturation by 10% instead.



 11435146

 11435146

16777215

 9659249

 15118783

 7949144

 16764379

 6239041

 16771576

 4594987

 3082007

 1441792

 0

 11435146

 11435146

 11430781

 11439511

11426161

11444131

11421796

11448496

11417176

11453116

11412811

11457481

11408447

11461845

11403826

11466466

11403313

11468782

11468795

# Harmonies

## Analogous

The Analogous color harmony consists of three colors that are next to each other on the color wheel.



10649500



11435146



11500919

# Triad

The Triadic color harmony groups three colors that are evenly spaced from another and form a triangle on the color wheel.



11435146



8621673



6066602

# Complementary

The Complementary color scheme is a pair of colors which are on the opposite of each other on the color wheel.



11435146



8171168

# Split Complementary

Split-complementary colors differ from the complementary color scheme. The scheme consists of three colors, the original color and two neighbors of the complement color.



5411996



11435146



7180919

# Square

The Square scheme is like the rectangle color scheme, but the four colors are evenly spaced on the color wheel.



11435146



9930852



5936265



7572399

# Rectangle

The Rectangle color scheme consists of four colors that form a rectangle on the color wheel.



11435146



11239533



5936265



5673638



# Sweetspot

The Sweet Spot groups the original color and five complimentary colors.



11435146



14929876



10517678



7562858



15921906



7566195



# Same Dimension

The Same Dimension uses a secret algorithm to generate beautiful new colors.



11435146



14915243



11437948



5721680



9830442



1507334



# Inverse Universe

The Inverse Universe completely reimagines the original color for something new.



11435146



14915243



8168366



5721680



9830442

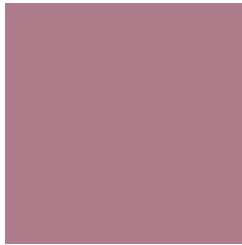


1507334



# Previews

## White Background



This preview shows how the Decimal color 11435146 looks on a white background.

## Color Contrast Check

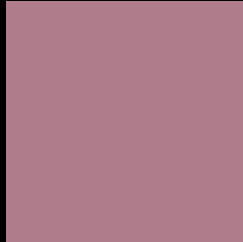
Large Text (above 18pt) WCAG AA ✓ Pass

Any Text WCAG AA × Fail

Large Text (above 18pt) WCAG AAA × Fail

Any Text WCAG AAA × Fail

# Black Background



This preview shows how the Decimal color 11435146 looks on a black background.

## Color Contrast Check

Large Text (above 18pt) WCAG AA ✓ Pass

Any Text WCAG AA ✓ Pass

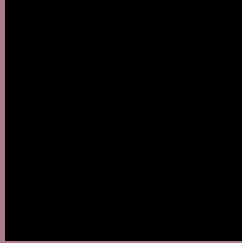
Large Text (above 18pt) WCAG AAA ✓ Pass

Any Text WCAG AAA × Fail

If you want to check with other color combinations, try the [Color Contrast Checker](#).



## Decimal 11435146 Background



This preview shows how black text looks on a background with the Decimal color 11435146.

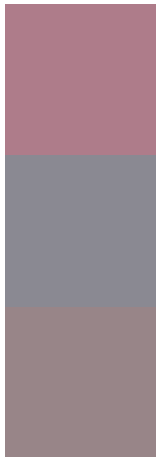


This preview shows how white text looks on a background with the Decimal color 11435146.

# Color Blindness Simulation

Color vision deficiency is a very complex topic, and I could not describe the different causes any better than Wikipedia does, so if you want to learn more, you should check out their [article about color blindness](#).


## Dichromacy



**Original Color**  
11435146

**Protanopia**  
9079186

**Deuteranopia**  
9995656



**Tritanopia**  
11435398

# Trichromacy



**Original Color**  
11435146

**Protanomaly**  
9929871

**Deuteranomaly**  
10519177

**Tritanomaly**  
11435399

# Monochromacy



**Original Color**  
11435146

**Achromatopsia**  
9276813

**Achromatomaly**  
10061708

# CSS Examples

## Text

The CSS property to change the color of the text to Decimal 11435146 is called "color". The color property can be set on classes, ids or directly on the HTML element.

This example shows how text in the color #AE7C8A looks like.

```
.text, #text, p{  
    color:#AE7C8A  
}
```

If you want to add a text shadow in that color use the text-shadow property, you can generate a text shadow directly with our [CSS Text Shadow Generator](#).

Here you see how black text with a 4 pixel #AE7C8A colored shadow looks like.

```
.shadow{ text-shadow: 4px 4px 2px #AE7C8A
}
```

## Border

The CSS property to change the border of an element to Decimal 11435146 is called "border". The border property can be set on classes, ids or directly on the HTML element.

This example shows the color as border, it can be applied via the CSS property "border" or "border-color".

```
.border, #border, table{ border:4px solid
#AE7C8A }
```

If only the border color should be changed use the property `border-color`.

```
.border{ border-color:#AE7C8A }
```

If you want to add a box shadow in that color use:

Here you see how a box with a 4 pixel #AE7C8A colored shadow looks like.

```
.boxshadow{ -moz-box-shadow:4px 4px 4px  
4px #AE7C8A; -webkit-box-shadow:4px 4px  
4px 4px #AE7C8A; box-shadow:4px 4px 4px  
4px #AE7C8A }
```

# Background

The CSS property to change the background color of an element to Decimal 11435146 is called "background". The background property can be set on classes, ids or directly on the HTML element.

```
.background, #background, body{  
background:#AE7C8A }
```

If only the background color should be changed can be used:

```
.background{ background-color:#AE7C8A }
```

This example shows the color as background, it is applied via the CSS property "background".

To optimize and compress your CSS code, you can use our [online CSS compressor and optimizer](#) based on csstidy. If you want to create a linear or radial gradient as background or border, check our [CSS Gradient Generator](#).



Hey! You found this booklet interesting? Support Converting Colors with the new Membership Option!

The pro membership hides all ads, plus gives you double the colors in the color bucket, and more awesome pro features!

**[Learn more, Memberships starting at \\$2.50/m!](#)**

**Follow me  
on Twitter!**

@ConvertingColor