

Converting Colors

Decimal(11435390)

Have a look what the booklet for
Decimal(11435390) contains.

Decimal(11435390)	3
<i>Conversions</i>	4
<i>Details</i>	6
<i>Harmonies</i>	11
<i>Previews</i>	23
<i>Color Blindness Simulation</i>	26
<i>CSS Examples</i>	29

Color

Decimal(11435390)

Conversions

Conversions Part 1

Format	Color
Hex	AE7D7E
RGB	174, 125, 126
RGB Percent	68%, 49%, 49%
CMY	0.3176, 0.5098, 0.5059
CMYK	0.00, 0.28, 0.28, 0.32
HSL	359°, 23%, 59%
HSV	359°, 28%, 68%
XYZ	28.5551, 25.1723, 23.0924
YIQ	139.7650, 28.8830, 10.6990

Conversions

Conversions Part 2

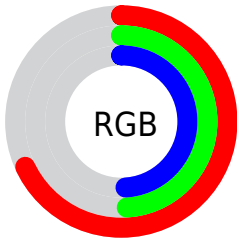
Format	Color
RYB	174, 125, 126
Decimal	11435390
CIELab	57.24, 19.17, 7.01
CIELCh	57, 20.416, 20.083
Yxy	25.1723, 0.3717, 0.3277
Android (android.graphics.Color)	4289625470 (0xFFAE7D7E)
YUV	139.7650, -6.7861, 30.0241
Hunter-Lab	50.1720, 13.7913, 7.8313

Details

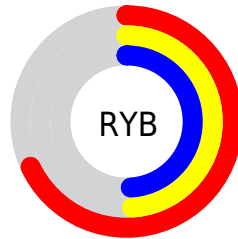
The Decimal color **11435390** is a dark color, and the websafe version is hex **996666**. A complement of this color would be **8236717**, and the grayscale version is **9211020**.

A 20% lighter version of the original color is **15119027**, and **7883853** is the 20% darker color. If you saturate the color by 10%, you get **11431021**, and if you desaturate by 10%, it is **11439759**.

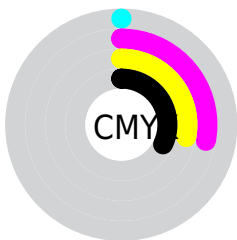
Distribution



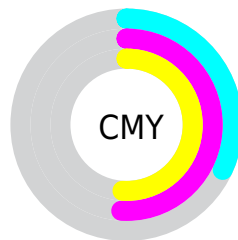
- Red (68%)
- Green (49%)
- Blue (49%)



- Red (68%)
- Yellow (49%)
- Blue (49%)



- Cyan (0%)
- Magenta (28%)
- Yellow (28%)
- Black (32%)



- Cyan (32%)
- Magenta (51%)
- Yellow (51%)

Brightness & Saturation Gradients

These gradients show how the Decimal color 11435390 changes by changing the brightness by 10 percent. The first figure shows a shift by +10% for each color and the second figure -10%.

Similar to the brightness gradients but the following saturation gradients show a change of the Decimal color 11435390 by changing the saturation by 10% instead.

 11435390

 11435390

16777215

 9659493

 15119027

 7883853

 16764622

 6239286

 16771818

 4595233

 3016970

 1114112

 0

 11435390

 11435390

 11431021

 11439759

 11426396

 11444384

 11422027

 11448753

 11417402

 11453378

 11413033

 11457747

 11408664

 11462116

 11404039

 11466741

 11403268

 11468799

Harmonies

Analogous

The Analogous color harmony consists of three colors that are next to each other on the color wheel.



11107728



11435390



11108719

Triad

The Triadic color harmony groups three colors that are evenly spaced from another and form a triangle on the color wheel.



11435390



7770482



7114156

Complementary

The Complementary color scheme is a pair of colors which are on the opposite of each other on the color wheel.



11435390



8236717

Split Complementary

Split-complementary colors differ from the complementary color scheme. The scheme consists of three colors, the original color and two neighbors of the complement color.



5935524



11435390



6525827

Square

The Square scheme is like the rectangle color scheme, but the four colors are evenly spaced on the color wheel.



11435390



9079912



5739413



8685483

Rectangle

The Rectangle color scheme consists of four colors that form a rectangle on the color wheel.



11435390



10585192



5739413



6655914

Sweetspot

The Sweet Spot groups the original color and five complimentary colors.



11435390



14930385



11304366



7563112



15921906



7566195

Same Dimension

The Same Dimension uses a secret algorithm to generate beautiful new colors.



11435390



14915223



11441277



5721678



9830403



1507328

Inverse Universe

The Inverse Universe completely reimagines the original color for something new.



11435390



14915223



8230830



5721678



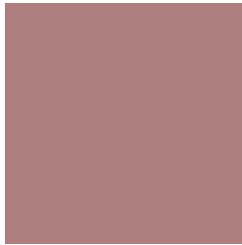
9830403



1507328

Previews

White Background



This preview shows how the Decimal color 11435390 looks on a white background.

Color Contrast Check

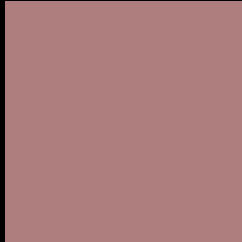
Large Text (above 18pt) WCAG AA ✓ Pass

Any Text WCAG AA × Fail

Large Text (above 18pt) WCAG AAA × Fail

Any Text WCAG AAA × Fail

Black Background



This preview shows how the Decimal color 11435390 looks on a black background.

Color Contrast Check

Large Text (above 18pt) WCAG AA ✓ Pass

Any Text WCAG AA ✓ Pass

Large Text (above 18pt) WCAG AAA ✓ Pass

Any Text WCAG AAA × Fail

If you want to check with other color combinations, try the [Color Contrast Checker](#).

Decimal 11435390 Background



This preview shows how black text looks on a background with the Decimal color 11435390.



This preview shows how white text looks on a background with the Decimal color 11435390.

Color Blindness Simulation

Color vision deficiency is a very complex topic, and I could not describe the different causes any better than Wikipedia does, so if you want to learn more, you should check out their [article about color blindness](#).

Dichromacy



Original Color
11435390

Protanopia
9275781

Deuteranopia
10257789



Tritanopia
11500677

Trichromacy



Original Color
11435390

Protanomaly
10061186

Deuteranomaly
10715773

Tritanomaly
11500674

Monochromacy



Original Color
11435390

Achromatopsia
9211020

Achromatomaly
9996167

CSS Examples

Text

The CSS property to change the color of the text to Decimal 11435390 is called "color". The color property can be set on classes, ids or directly on the HTML element.

This example shows how text in the color #AE7D7E looks like.

```
.text, #text, p{  
    color:#AE7D7E  
}
```

If you want to add a text shadow in that color use the text-shadow property, you can generate a text shadow directly with our [CSS Text Shadow Generator](#).

Here you see how black text with a 4 pixel #AE7D7E colored shadow looks like.

```
.shadow{ text-shadow: 4px 4px 2px #AE7D7E
}
```

Border

The CSS property to change the border of an element to Decimal 11435390 is called "border". The border property can be set on classes, ids or directly on the HTML element.

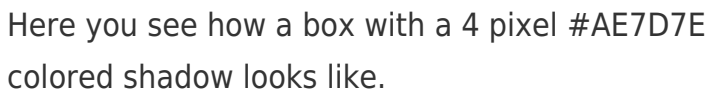
This example shows the color as border, it can be applied via the CSS property "border" or "border-color".

```
.border, #border, table{ border:4px solid
#AE7D7E }
```

If only the border color should be changed use the property `border-color`.

```
.border{ border-color:#AE7D7E }
```

If you want to add a box shadow in that color use:



Here you see how a box with a 4 pixel `#AE7D7E` colored shadow looks like.

```
.boxshadow{ -moz-box-shadow:4px 4px 4px  
4px #AE7D7E; -webkit-box-shadow:4px 4px  
4px 4px #AE7D7E; box-shadow:4px 4px 4px  
4px #AE7D7E }
```

Background

The CSS property to change the background color of an element to Decimal 11435390 is called "background". The background property can be set on classes, ids or directly on the HTML element.

```
.background, #background, body{  
background:#AE7D7E }
```

If only the background color should be changed can be used:

```
.background{ background-color:#AE7D7E }
```

This example shows the color as background, it is applied via the CSS property "background".

To optimize and compress your CSS code, you can use our [online CSS compressor and optimizer](#) based on csstidy. If you want to create a linear or radial gradient as background or border, check our [CSS Gradient Generator](#).

Hey! You found this booklet interesting? Support Converting Colors with the new Membership Option!

The pro membership hides all ads, plus gives you double the colors in the color bucket, and more awesome pro features!

[Learn more, Memberships starting at \\$2.50/m!](#)

**Follow me
on Twitter!**

@ConvertingColor