

Converting Colors

Decimal(11435628)

Have a look what the booklet for
Decimal(11435628) contains.

Decimal(11435628)	3
<i>Conversions</i>	4
<i>Details</i>	6
<i>Harmonies</i>	11
<i>Previews</i>	23
<i>Color Blindness Simulation</i>	26
<i>CSS Examples</i>	29

Color

Decimal(11435628)

Conversions

Conversions Part 1

Format	Color
Hex	AE7E6C
RGB	174, 126, 108
RGB Percent	68%, 49%, 42%
CMY	0.3176, 0.5059, 0.5765
CMYK	0.00, 0.28, 0.38, 0.32
HSL	16°, 29%, 55%
HSV	16°, 38%, 68%
XYZ	27.6232, 25.0031, 17.5575
YIQ	138.3000, 34.3860, 4.5780

Conversions

Conversions Part 2

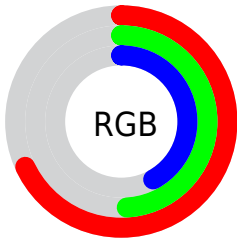
Format	Color
RYB	174, 133, 108
Decimal	11435628
CIELab	57.08, 16.20, 17.14
CIELCh	57, 23.583, 46.612
Yxy	25.0031, 0.3936, 0.3563
Android (android.graphics.Color)	4289625708 (0xFFAE7E6C)
YUV	138.3000, -14.9379, 31.3089
Hunter-Lab	50.0031, 11.1033, 14.1837

Details

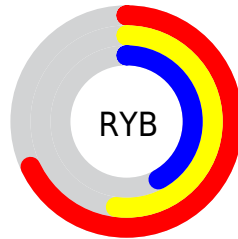
The Decimal color **11435628** is a dark color, and the websafe version is hex **996666**. A complement of this color would be **7117998**, and the grayscale version is **9079434**.

A 20% lighter version of the original color is **15184799**, and **7884092** is the 20% darker color. If you saturate the color by 10%, you get **11432283**, and if you desaturate by 10%, it is **11438973**.

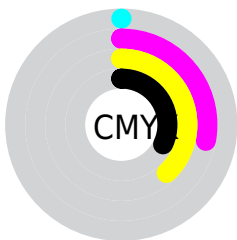
Distribution



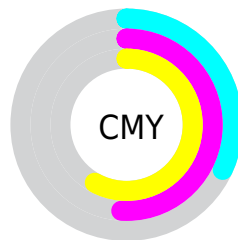
- Red (68%)
- Green (49%)
- Blue (42%)



- Red (68%)
- Yellow (52%)
- Blue (42%)



- Cyan (0%)
- Magenta (28%)
- Yellow (38%)
- Black (32%)




- Cyan (32%)
- Magenta (51%)
- Yellow (58%)

Brightness & Saturation Gradients

These gradients show how the Decimal color 11435628 changes by changing the brightness by 10 percent. The first figure shows a shift by +10% for each color and the second figure -10%.

Similar to the brightness gradients but the following saturation gradients show a change of the Decimal color 11435628 by changing the saturation by 10% instead.

 11435628

 11435628

16777215

 9659732

 15184799

 7884092

 16764602

 6174247

 16772054

 4530194

 16777203

 2951936

 589824

 0

 11435628

 11435628

 11432283

 11438973

■ 11429193

■ 11442063

■ 11425848

■ 11445408

■ 11422502

■ 11448754

■ 11419413

■ 11451843

■ 11416068

■ 11455188

■ 11415296

■ 11458534

■ 11461623

■ 11464959

Harmonies

Analogous

The Analogous color harmony consists of three colors that are next to each other on the color wheel.



11762302



11435628



10519905

Triad

The Triadic color harmony groups three colors that are evenly spaced from another and form a triangle on the color wheel.



11435628



6132863



8357808

Complementary

The Complementary color scheme is a pair of colors which are on the opposite of each other on the color wheel.



11435628



7117998

Split Complementary

Split-complementary colors differ from the complementary color scheme. The scheme consists of three colors, the original color and two neighbors of the complement color.



6459056



11435628



5018772

Square

The Square scheme is like the rectangle color scheme, but the four colors are evenly spaced on the color wheel.



11435628



7704940



5083814



10125477

Rectangle

The Rectangle color scheme consists of four colors that form a rectangle on the color wheel.



11435628



9668960



5083814



7702962

Sweetspot

The Sweet Spot groups the original color and five complimentary colors.



11435628



14930378



11431068



7563364



15921906



7566195

Same Dimension

The Same Dimension uses a secret algorithm to generate beautiful new colors.



11435628



14915451



11444076



5722190



9840896



1508864

Inverse Universe

The Inverse Universe completely reimagines the original color for something new.



7117998



8111843



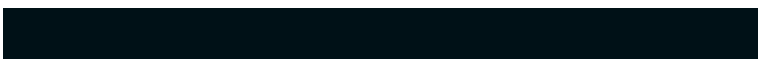
7109550



5133399



28054



4375

Previews

White Background



This preview shows how the Decimal color 11435628 looks on a white background.

Color Contrast Check

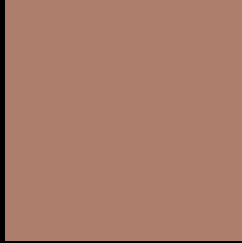
Large Text (above 18pt) WCAG AA ✓ Pass

Any Text WCAG AA × Fail

Large Text (above 18pt) WCAG AAA × Fail

Any Text WCAG AAA × Fail

Black Background



This preview shows how the Decimal color 11435628 looks on a black background.

Color Contrast Check

Large Text (above 18pt) WCAG AA ✓ Pass

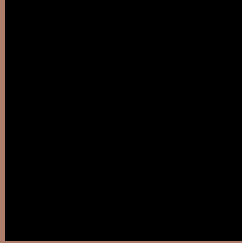
Any Text WCAG AA ✓ Pass

Large Text (above 18pt) WCAG AAA ✓ Pass

Any Text WCAG AAA × Fail

If you want to check with other color combinations, try the [Color Contrast Checker](#).

Decimal 11435628 Background



This preview shows how black text looks on a background with the Decimal color 11435628.




This preview shows how white text looks on a background with the Decimal color 11435628.

Color Blindness Simulation

Color vision deficiency is a very complex topic, and I could not describe the different causes any better than Wikipedia does, so if you want to learn more, you should check out their [article about color blindness](#).

Dichromacy





Tritanopia
11565956

Trichromacy



Original Color
11435628

Protanomaly
10257775

Deuteranomaly
10912363

Tritanomaly
11500667

Monochromacy



Original Color
11435628

Achromatopsia
9079434

Achromatomaly
9930367

CSS Examples

Text

The CSS property to change the color of the text to Decimal 11435628 is called "color". The color property can be set on classes, ids or directly on the HTML element.

This example shows how text in the color #AE7E6C looks like.

```
.text, #text, p{  
    color:#AE7E6C  
}
```

If you want to add a text shadow in that color use the text-shadow property, you can generate a text shadow directly with our [CSS Text Shadow Generator](#).

Here you see how black text with a 4 pixel #AE7E6C colored shadow looks like.

```
.shadow{ text-shadow: 4px 4px 2px #AE7E6C
}
```

Border

The CSS property to change the border of an element to Decimal 11435628 is called "border". The border property can be set on classes, ids or directly on the HTML element.

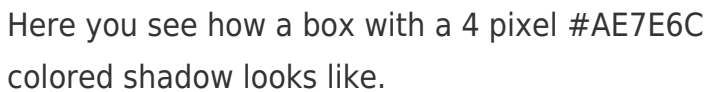
This example shows the color as border, it can be applied via the CSS property "border" or "border-color".

```
.border, #border, table{ border:4px solid
#AE7E6C }
```

If only the border color should be changed use the property `border-color`.

```
.border{ border-color:#AE7E6C }
```

If you want to add a box shadow in that color use:



Here you see how a box with a 4 pixel #AE7E6C colored shadow looks like.

```
.boxshadow{ -moz-box-shadow:4px 4px 4px  
4px #AE7E6C; -webkit-box-shadow:4px 4px  
4px 4px #AE7E6C; box-shadow:4px 4px 4px  
4px #AE7E6C }
```

Background

The CSS property to change the background color of an element to Decimal 11435628 is called "background". The background property can be set on classes, ids or directly on the HTML element.

```
.background, #background, body{  
background:#AE7E6C }
```

If only the background color should be changed can be used:

```
.background{ background-color:#AE7E6C }
```

This example shows the color as background, it is applied via the CSS property "background".

To optimize and compress your CSS code, you can use our [online CSS compressor and optimizer](#) based on csstidy. If you want to create a linear or radial gradient as background or border, check our [CSS Gradient Generator](#).

Hey! You found this booklet interesting? Support Converting Colors with the new Membership Option!

The pro membership hides all ads, plus gives you double the colors in the color bucket, and more awesome pro features!

[Learn more, Memberships starting at \\$2.50/m!](#)

**Follow me
on Twitter!**

@ConvertingColor