

Converting Colors

Decimal(11436168)

Have a look what the booklet for
Decimal(11436168) contains.

Decimal(11436168)	3
<i>Conversions</i>	4
<i>Details</i>	6
<i>Harmonies</i>	11
<i>Previews</i>	23
<i>Color Blindness Simulation</i>	26
<i>CSS Examples</i>	29

Color

Decimal(11436168)

Conversions

Conversions Part 1

Format	Color
Hex	AE8088
RGB	174, 128, 136
RGB Percent	68%, 50%, 53%
CMY	0.3176, 0.4980, 0.4667
CMYK	0.00, 0.26, 0.22, 0.32
HSL	350°, 22%, 59%
HSV	350°, 26%, 68%
XYZ	29.6187, 26.2146, 26.7914
YIQ	142.6660, 24.8480, 12.2400

Conversions

Conversions Part 2

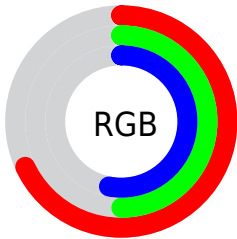
Format	Color
RYB	174, 128, 136
Decimal	11436168
CIELab	58.24, 18.98, 2.67
CIELCh	58, 19.171, 8.018
Yxy	26.2146, 0.3585, 0.3173
Android (android.graphics.Color)	4289626248 (0xFFAE8088)
YUV	142.6660, -3.2863, 27.4799
Hunter-Lab	51.2002, 13.6597, 4.8156

Details

The Decimal color **11436168** is a dark color, and the websafe version is hex **CC9999**. A complement of this color would be **8433318**, and the grayscale version is **9408399**.

A 20% lighter version of the original color is **15119805**, and **7949910** is the 20% darker color. If you saturate the color by 10%, you get **11431802**, and if you desaturate by 10%, it is **11440534**.

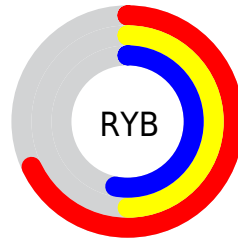
Distribution



Red (68%)

Green (50%)

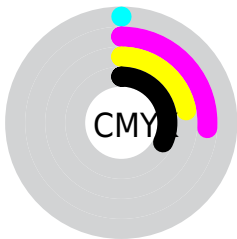
Blue (53%)



Red (68%)

Yellow (50%)

Blue (53%)

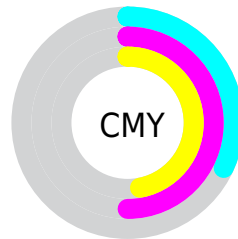


Cyan (0%)

Magenta (26%)

Yellow (22%)

Black (32%)



Cyan (32%)

Magenta (50%)

Yellow (47%)

Brightness & Saturation Gradients

These gradients show how the Decimal color 11436168 changes by changing the brightness by 10 percent. The first figure shows a shift by +10% for each color and the second figure -10%.

Similar to the brightness gradients but the following saturation gradients show a change of the Decimal color 11436168 by changing the saturation by 10% instead.

 11436168

 11436168

16777215

 9660271

 15119805

 7949910

 16765401

 6240063

 16772597

 4661545

 3083285

 1572865

 0

 11436168

 11436168

 11431802

 11440534

 11427179

 11445157

 11422813

 11449523

 11418191

 11454145

 11413824

 11458512

 11409458

 11462878

 11404835

 11467501

 11403294

 11468795

 11468799

Harmonies

Analogous

The Analogous color harmony consists of three colors that are next to each other on the color wheel.



10912409



11436168



11371128

Triad

The Triadic color harmony groups three colors that are evenly spaced from another and form a triangle on the color wheel.



11436168



8491377



6918571

Complementary

The Complementary color scheme is a pair of colors which are on the opposite of each other on the color wheel.



11436168



8433318

Split Complementary

Split-complementary colors differ from the complementary color scheme. The scheme consists of three colors, the original color and two neighbors of the complement color.



6133152



11436168



7312511

Square

The Square scheme is like the rectangle color scheme, but the four colors are evenly spaced on the color wheel.



11436168



9735275



6330000



8293549

Rectangle

The Rectangle color scheme consists of four colors that form a rectangle on the color wheel.



11436168



11044208



6330000



6591144

Sweetspot

The Sweet Spot groups the original color and five complimentary colors.



11436168



14930388



10911918



7563113



15921906



7566195

Same Dimension

The Same Dimension uses a secret algorithm to generate beautiful new colors.



11436168



14916263



11440000



5721680



9830426



1507332

Inverse Universe

The Inverse Universe completely reimagines the original color for something new.



11436168



14916263



8429486



5721680



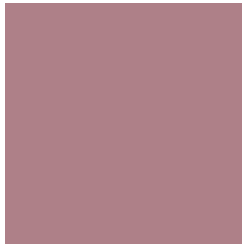
9830426



1507332

Previews

White Background



This preview shows how the Decimal color 11436168 looks on a white background.

Color Contrast Check

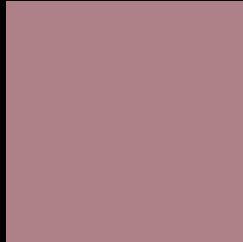
Large Text (above 18pt) WCAG AA ✓ Pass

Any Text WCAG AA × Fail

Large Text (above 18pt) WCAG AAA × Fail

Any Text WCAG AAA × Fail

Black Background



This preview shows how the Decimal color 11436168 looks on a black background.

Color Contrast Check

Large Text (above 18pt) WCAG AA ✓ Pass

Any Text WCAG AA ✓ Pass

Large Text (above 18pt) WCAG AAA ✓ Pass

Any Text WCAG AAA × Fail

If you want to check with other color combinations, try the [Color Contrast Checker](#).

Decimal 11436168 Background



This preview shows how black text looks on a background with the Decimal color 11436168.



This preview shows how white text looks on a background with the Decimal color 11436168.

Color Blindness Simulation

Color vision deficiency is a very complex topic, and I could not describe the different causes any better than Wikipedia does, so if you want to learn more, you should check out their [article about color blindness](#).


Dichromacy



Original Color
11436168

Protanopia
9342095

Deuteranopia
10258567



Tritanopia
11436170

Trichromacy



Original Color
11436168

Protanomaly
10127500

Deuteranomaly
10716551

Tritanomaly
11436169

Monochromacy



Original Color
11436168

Achromatopsia
9408399

Achromatomaly
10128012

CSS Examples

Text

The CSS property to change the color of the text to Decimal 11436168 is called "color". The color property can be set on classes, ids or directly on the HTML element.

This example shows how text in the color #AE8088 looks like.

```
.text, #text, p{  
    color:#AE8088  
}
```

If you want to add a text shadow in that color use the text-shadow property, you can generate a text shadow directly with our [CSS Text Shadow Generator](#).

Here you see how black text with a 4 pixel #AE8088 colored shadow looks like.

```
.shadow{ text-shadow: 4px 4px 2px #AE8088  
}
```

Border

The CSS property to change the border of an element to Decimal 11436168 is called "border". The border property can be set on classes, ids or directly on the HTML element.

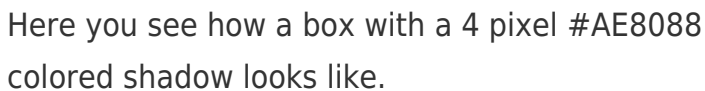
This example shows the color as border, it can be applied via the CSS property "border" or "border-color".

```
.border, #border, table{ border:4px solid  
#AE8088 }
```

If only the border color should be changed use the property `border-color`.

```
.border{ border-color:#AE8088 }
```

If you want to add a box shadow in that color use:



Here you see how a box with a 4 pixel `#AE8088` colored shadow looks like.

```
.boxshadow{ -moz-box-shadow:4px 4px 4px  
4px #AE8088; -webkit-box-shadow:4px 4px  
4px 4px #AE8088; box-shadow:4px 4px 4px  
4px #AE8088 }
```

Background

The CSS property to change the background color of an element to Decimal 11436168 is called "background". The background property can be set on classes, ids or directly on the HTML element.

```
.background, #background, body{  
background:#AE8088 }
```

If only the background color should be changed can be used:

```
.background{ background-color:#AE8088 }
```

This example shows the color as background, it is applied via the CSS property "background".

To optimize and compress your CSS code, you can use our [online CSS compressor and optimizer](#) based on csstidy. If you want to create a linear or radial gradient as background or border, check our [CSS Gradient Generator](#).

Hey! You found this booklet interesting? Support Converting Colors with the new Membership Option!

The pro membership hides all ads, plus gives you double the colors in the color bucket, and more awesome pro features!

[Learn more, Memberships starting at \\$2.50/m!](#)

**Follow me
on Twitter!**

@ConvertingColor