

Converting Colors

Decimal(11436180)

Have a look what the booklet for
Decimal(11436180) contains.

Decimal(11436180)	3
<i>Conversions</i>	4
<i>Details</i>	6
<i>Harmonies</i>	11
<i>Previews</i>	23
<i>Color Blindness Simulation</i>	26
<i>CSS Examples</i>	29

Color

Decimal(11436180)

Conversions

Conversions Part 1

Format	Color
Hex	AE8094
RGB	174, 128, 148
RGB Percent	68%, 50%, 58%
CMY	0.3176, 0.4980, 0.4196
CMYK	0.00, 0.26, 0.15, 0.32
HSL	334°, 22%, 59%
HSV	334°, 26%, 68%
XYZ	30.5200, 26.5751, 31.5379
YIQ	144.0340, 20.9960, 15.9720

Conversions

Conversions Part 2

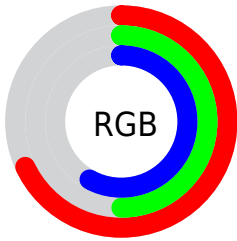
Format	Color
RYB	174, 128, 148
Decimal	11436180
CIELab	58.58, 20.93, -3.74
CIELCh	59, 21.259, 349.856
Yxy	26.5751, 0.3443, 0.2998
Android (android.graphics.Color)	4289626260 (0xFFAE8094)
YUV	144.0340, 1.9552, 26.2802
Hunter-Lab	51.5511, 15.4638, -0.1867

Details

The Decimal color **11436180** is a light color, and the websafe version is hex **CC9999**. A complement of this color would be **8433306**, and the grayscale version is **9474192**.

A 20% lighter version of the original color is **15119818**, and **7949921** is the 20% darker color. If you saturate the color by 10%, you get **11431818**, and if you desaturate by 10%, it is **11440542**.

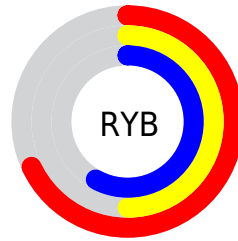
Distribution



Red (68%)

Green (50%)

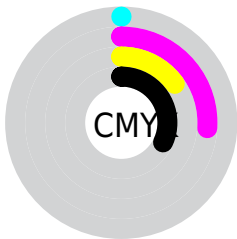
Blue (58%)



Red (68%)

Yellow (50%)

Blue (58%)

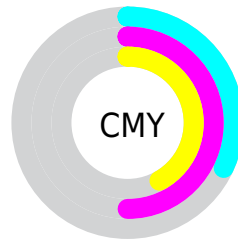


Cyan (0%)

Magenta (26%)

Yellow (15%)

Black (32%)



Cyan (32%)

Magenta (50%)


Yellow (42%)

Brightness & Saturation Gradients

These gradients show how the Decimal color 11436180 changes by changing the brightness by 10 percent. The first figure shows a shift by +10% for each color and the second figure -10%.

Similar to the brightness gradients but the following saturation gradients show a change of the Decimal color 11436180 by changing the saturation by 10% instead.

 11436180

 11436180

16777215

 9660282

 15119818

 7949921

 16765414

 6240074

 16772607

 4661555

 3148574

 1769476

 0

 11436180

 11436180

 11431818

 11440542

 11427200

 11445160

 11422838

 11449522

 11418221

 11454139

 11413859

 11458501

 11409497

 11462863

 11404879

 11467481

 11403340

 11468771

 11468781

Harmonies

Analogous

The Analogous color harmony consists of three colors that are next to each other on the color wheel.



10454181



11436180



11763841

Triad

The Triadic color harmony groups three colors that are evenly spaced from another and form a triangle on the color wheel.



11436180



9343082



6002089

Complementary

The Complementary color scheme is a pair of colors which are on the opposite of each other on the color wheel.



11436180



8433306

Split Complementary

Split-complementary colors differ from the complementary color scheme. The scheme consists of three colors, the original color and two neighbors of the complement color.



5805977



11436180



7902324

Square

The Square scheme is like the rectangle color scheme, but the four colors are evenly spaced on the color wheel.



11436180



10586729



6592390



7246257

Rectangle

The Rectangle color scheme consists of four colors that form a rectangle on the color wheel.



11436180



11633270



6592390



5740196

Sweetspot

The Sweet Spot groups the original color and five complimentary colors.



11436180



14930393



10059950



7563116



15921906



7566195

Same Dimension

The Same Dimension uses a secret algorithm to generate beautiful new colors.



11436180



14916282



11436672



5721682



9830465



1507338

Inverse Universe

The Inverse Universe completely reimagines the original color for something new.



11436180



14916282



8432814



5721682



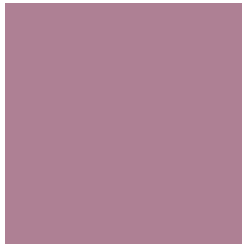
9830465



1507338

Previews

White Background



This preview shows how the Decimal color 11436180 looks on a white background.

Color Contrast Check

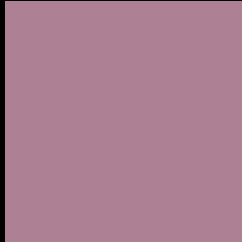
Large Text (above 18pt) WCAG AA ✓ Pass

Any Text WCAG AA ✗ Fail

Large Text (above 18pt) WCAG AAA ✗ Fail

Any Text WCAG AAA ✗ Fail

Black Background



This preview shows how the Decimal color 11436180 looks on a black background.

Color Contrast Check

Large Text (above 18pt) WCAG AA ✓ Pass

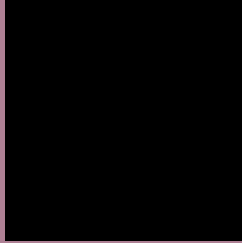
Any Text WCAG AA ✓ Pass

Large Text (above 18pt) WCAG AAA ✓ Pass

Any Text WCAG AAA × Fail

If you want to check with other color combinations, try the [Color Contrast Checker](#).

Decimal 11436180 Background



This preview shows how black text looks on a background with the Decimal color 11436180.

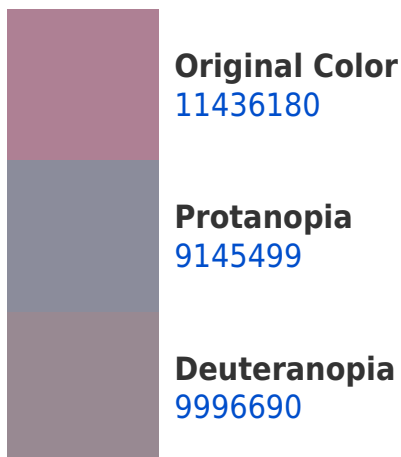


This preview shows how white text looks on a background with the Decimal color 11436180.

Color Blindness Simulation

Color vision deficiency is a very complex topic, and I could not describe the different causes any better than Wikipedia does, so if you want to learn more, you should check out their [article about color blindness](#).

Dichromacy





Tritanopia
11370891

Trichromacy



Original Color
11436180

Protanomaly
9996440

Deuteranomaly
10520211

Tritanomaly
11370894

Monochromacy



Original Color
11436180

Achromatopsia
9474192

Achromatomaly
10193553

CSS Examples

Text

The CSS property to change the color of the text to Decimal 11436180 is called "color". The color property can be set on classes, ids or directly on the HTML element.

This example shows how text in the color #AE8094 looks like.

```
.text, #text, p{  
    color:#AE8094  
}
```

If you want to add a text shadow in that color use the text-shadow property, you can generate a text shadow directly with our [CSS Text Shadow Generator](#).

Here you see how black text with a 4 pixel #AE8094 colored shadow looks like.

```
.shadow{ text-shadow: 4px 4px 2px #AE8094
}
```

Border

The CSS property to change the border of an element to Decimal 11436180 is called "border". The border property can be set on classes, ids or directly on the HTML element.

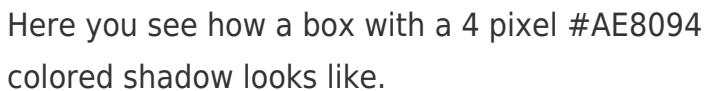
This example shows the color as border, it can be applied via the CSS property "border" or "border-color".

```
.border, #border, table{ border:4px solid
#AE8094 }
```

If only the border color should be changed use the property `border-color`.

```
.border{ border-color:#AE8094 }
```

If you want to add a box shadow in that color use:



Here you see how a box with a 4 pixel #AE8094 colored shadow looks like.

```
.boxshadow{ -moz-box-shadow:4px 4px 4px  
4px #AE8094; -webkit-box-shadow:4px 4px  
4px 4px #AE8094; box-shadow:4px 4px 4px  
4px #AE8094 }
```

Background

The CSS property to change the background color of an element to Decimal 11436180 is called "background". The background property can be set on classes, ids or directly on the HTML element.

```
.background, #background, body{  
background:#AE8094 }
```

If only the background color should be changed can be used:

```
.background{ background-color:#AE8094 }
```

This example shows the color as background, it is applied via the CSS property "background".

To optimize and compress your CSS code, you can use our [online CSS compressor and optimizer](#) based on csstidy. If you want to create a linear or radial gradient as background or border, check our [CSS Gradient Generator](#).

Hey! You found this booklet interesting? Support Converting Colors with the new Membership Option!

The pro membership hides all ads, plus gives you double the colors in the color bucket, and more awesome pro features!

[Learn more, Memberships starting at \\$2.50/m!](#)

**Follow me
on Twitter!**

@ConvertingColor