

Converting Colors

Decimal(11436383)

Have a look what the booklet for
Decimal(11436383) contains.

Decimal(11436383)	3
<i>Conversions</i>	4
<i>Details</i>	6
<i>Harmonies</i>	11
<i>Previews</i>	23
<i>Color Blindness Simulation</i>	26
<i>CSS Examples</i>	29

Color

Decimal(11436383)

Conversions

Conversions Part 1

Format	Color
Hex	AE815F
RGB	174, 129, 95
RGB Percent	68%, 51%, 37%
CMY	0.3176, 0.4941, 0.6275
CMYK	0.00, 0.26, 0.45, 0.32
HSL	26°, 33%, 53%
HSV	26°, 45%, 68%
XYZ	27.3714, 25.5254, 14.3107
YIQ	138.5790, 37.7340, -1.0340

Conversions

Conversions Part 2

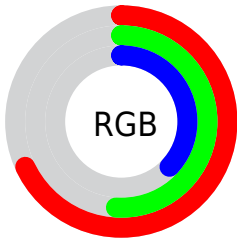
Format	Color
RYB	174, 155, 95
Decimal	11436383
CIELab	57.58, 13.01, 25.18
CIELCh	58, 28.345, 62.673
Yxy	25.5254, 0.4073, 0.3798
Android (android.graphics.Color)	4289626463 (0xFFAE815F)
YUV	138.5790, -21.4844, 31.0642
Hunter-Lab	50.5227, 8.2902, 18.5718

Details

The Decimal color **11436383** is a dark color, and the websafe version is hex **CC9966**. A complement of this color would be **6261934**, and the grayscale version is **9145227**.

A 20% lighter version of the original color is **15185554**, and **7819312** is the 20% darker color. If you saturate the color by 10%, you get **11433806**, and if you desaturate by 10%, it is **11438960**.

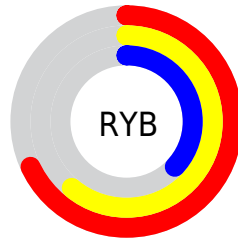
Distribution



Red (68%)

Green (51%)

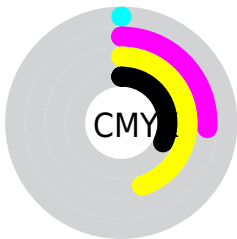
Blue (37%)



Red (68%)

Yellow (61%)

Blue (37%)

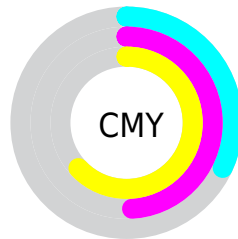


Cyan (0%)

Magenta (26%)

Yellow (45%)

Black (32%)



Cyan (32%)

Magenta (49%)

Yellow (63%)

Brightness & Saturation Gradients

These gradients show how the Decimal color 11436383 changes by changing the brightness by 10 percent. The first figure shows a shift by +10% for each color and the second figure -10%.

Similar to the brightness gradients but the following saturation gradients show a change of the Decimal color 11436383 by changing the saturation by 10% instead.

 11436383

 11436383

16777215

 9594951

 15185554

 7819312

 16765613

 6109466

 16772808

 4465410

 16777188

 2821888

 458752

 0

 11436383

 11436383

 11433806

 11438960

■ 11431228

■ 11441538

■ 11428651

■ 11444115

■ 11426073

■ 11446693

■ 11423496

■ 11449270

■ 11422464

■ 11451591

■ 11454169

■ 11456746

■ 11459324

Harmonies

Analogous

The Analogous color harmony consists of three colors that are next to each other on the color wheel.



12221041



11436383



10062169

Triad

The Triadic color harmony groups three colors that are evenly spaced from another and form a triangle on the color wheel.



11436383



4495500



9470900

Complementary

The Complementary color scheme is a pair of colors which are on the opposite of each other on the color wheel.



11436383



6261934

Split Complementary

Split-complementary colors differ from the complementary color scheme. The scheme consists of three colors, the original color and two neighbors of the complement color.



7113915



11436383



3446692

Square

The Square scheme is like the rectangle color scheme, but the four colors are evenly spaced on the color wheel.



11436383



6461043



4690870



11303841

Rectangle

The Rectangle color scheme consists of four colors that form a rectangle on the color wheel.



11436383



8949596



4690870



8750776

Sweetspot

The Sweet Spot groups the original color and five complimentary colors.



11436383



14930371



11427725



7563359



15921906



7566195

Same Dimension

The Same Dimension uses a secret algorithm to generate beautiful new colors.



11436383



14916968



11446111



5722702



9847040



1509888

Inverse Universe

The Inverse Universe completely reimagines the original color for something new.



6261934



6860515



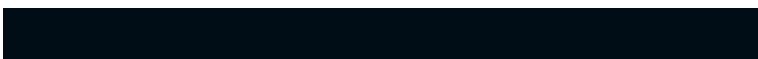
6252206



5133143



22166



3351

Previews

White Background



This preview shows how the Decimal color 11436383 looks on a white background.

Color Contrast Check

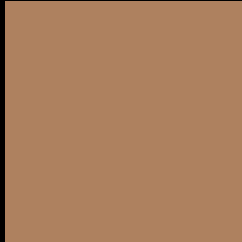
Large Text (above 18pt) WCAG AA ✓ Pass

Any Text WCAG AA × Fail

Large Text (above 18pt) WCAG AAA × Fail

Any Text WCAG AAA × Fail

Black Background



This preview shows how the Decimal color 11436383 looks on a black background.

Color Contrast Check

Large Text (above 18pt) WCAG AA ✓ Pass

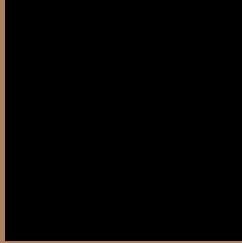
Any Text WCAG AA ✓ Pass

Large Text (above 18pt) WCAG AAA ✓ Pass

Any Text WCAG AAA × Fail

If you want to check with other color combinations, try the [Color Contrast Checker](#).

Decimal 11436383 Background



This preview shows how black text looks on a background with the Decimal color 11436383.



This preview shows how white text looks on a background with the Decimal color 11436383.

Color Blindness Simulation

Color vision deficiency is a very complex topic, and I could not describe the different causes any better than Wikipedia does, so if you want to learn more, you should check out their [article about color blindness](#).


Dichromacy



Original Color
11436383

Protanopia
9800291

Deuteranopia
10913118



Tritanopia
11631749

Trichromacy



Original Color
11436383

Protanomaly
10389346

Deuteranomaly
11109470

Tritanomaly
11566711

Monochromacy



Original Color
11436383

Achromatopsia
9145227

Achromatomaly
9996155

CSS Examples

Text

The CSS property to change the color of the text to Decimal 11436383 is called "color". The color property can be set on classes, ids or directly on the HTML element.

This example shows how text in the color #AE815F looks like.

```
.text, #text, p{  
  color:#AE815F  
}
```

If you want to add a text shadow in that color use the text-shadow property, you can generate a text shadow directly with our [CSS Text Shadow Generator](#).

Here you see how black text with a 4 pixel #AE815F colored shadow looks like.

```
.shadow{ text-shadow: 4px 4px 2px #AE815F
}
```

Border

The CSS property to change the border of an element to Decimal 11436383 is called "border". The border property can be set on classes, ids or directly on the HTML element.

This example shows the color as border, it can be applied via the CSS property "border" or "border-color".

```
.border, #border, table{ border:4px solid
#AE815F }
```

If only the border color should be changed use the property `border-color`.

```
.border{ border-color:#AE815F }
```

If you want to add a box shadow in that color use:

Here you see how a box with a 4 pixel #AE815F colored shadow looks like.

```
.boxshadow{ -moz-box-shadow:4px 4px 4px  
4px #AE815F; -webkit-box-shadow:4px 4px  
4px 4px #AE815F; box-shadow:4px 4px 4px  
4px #AE815F }
```

Background

The CSS property to change the background color of an element to Decimal 11436383 is called "background". The background property can be set on classes, ids or directly on the HTML element.

```
.background, #background, body{  
background:#AE815F }
```

If only the background color should be changed can be used:

```
.background{ background-color:#AE815F }
```

This example shows the color as background, it is applied via the CSS property "background".

To optimize and compress your CSS code, you can use our [online CSS compressor and optimizer](#) based on csstidy. If you want to create a linear or radial gradient as background or border, check our [CSS Gradient Generator](#).

Hey! You found this booklet interesting? Support Converting Colors with the new Membership Option!

The pro membership hides all ads, plus gives you double the colors in the color bucket, and more awesome pro features!

[Learn more, Memberships starting at \\$2.50/m!](#)

**Follow me
on Twitter!**

@ConvertingColor