

# Converting Colors

Decimal(11436630)

Have a look what the booklet for  
Decimal(11436630) contains.

<b>Decimal(11436630)</b> .....	3
<i><b>Conversions</b></i> .....	4
<i><b>Details</b></i> .....	6
<i><b>Harmonies</b></i> .....	11
<i><b>Previews</b></i> .....	23
<i><b>Color Blindness Simulation</b></i> .....	26
<i><b>CSS Examples</b></i> .....	29

# Color

**Decimal(11436630)**

# Conversions

## Conversions Part 1

<b>Format</b>	<b>Color</b>
Hex	AE8256
RGB	174, 130, 86
RGB Percent	68%, 51%, 34%
CMY	0.3176, 0.4902, 0.6627
CMYK	0.00, 0.25, 0.51, 0.32
HSL	30°, 35%, 51%
HSV	30°, 51%, 68%
XYZ	27.1179, 25.6358, 12.3230
YIQ	138.1400, 40.3480, -4.3560

# Conversions

## Conversions Part 2

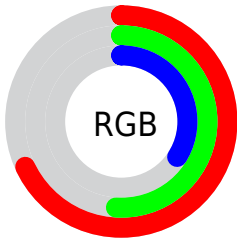
<b>Format</b>	<b>Color</b>
<b>RYB</b>	174, 174, 86
Decimal	11436630
CIELab	57.69, 11.53, 30.31
CIELCh	58, 32.429, 69.167
Yxy	25.6358, 0.4167, 0.3939
Android (android.graphics.Color)	4289626710 (0xFFAE8256)
YUV	138.1400, -25.7050, 31.4492
Hunter-Lab	50.6318, 6.9971, 21.0120

# Details

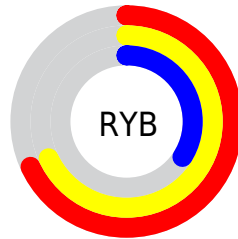
The Decimal color **11436630** is a dark color, and the websafe version is hex **CC9966**. A complement of this color would be **5669550**, and the grayscale version is **9079434**.

A 20% lighter version of the original color is **15185800**, and **7819559** is the 20% darker color. If you saturate the color by 10%, you get **11434309**, and if you desaturate by 10%, it is **11438951**.

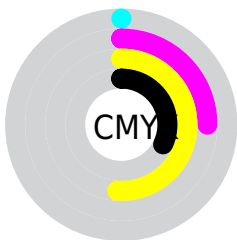
# Distribution



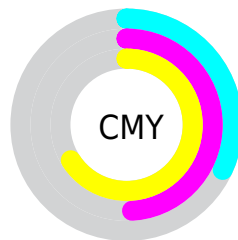
- Red (68%)
- Green (51%)
- Blue (34%)



- Red (68%)
- Yellow (68%)
- Blue (34%)



- Cyan (0%)
- Magenta (25%)
- Yellow (51%)
- Black (32%)



- Cyan (32%)
- Magenta (49%)
- Yellow (66%)

# Brightness & Saturation Gradients

These gradients show how the Decimal color 11436630 changes by changing the brightness by 10 percent. The first figure shows a shift by +10% for each color and the second figure -10%.

Similar to the brightness gradients but the following saturation gradients show a change of the Decimal color 11436630 by changing the saturation by 10% instead.



 11436630

 11436630

16777215

 9595198

 15185800

 7819559

 16765859

 6109713

 16773054

 4465664

 16777178


 2756608

 16777207

 262144

 0

 11436630

 11436630

 11434309

 11438951

■ 11432243

■ 11441017

■ 11429922

■ 11443338

■ 11427600

■ 11445660

■ 11425536

■ 11447981

■ 11450046

■ 11452368

■ 11454689

■ 11456755

# Harmonies

## Analogous

The Analogous color harmony consists of three colors that are next to each other on the color wheel.



12482920



11436630



9800786

# Triad

The Triadic color harmony groups three colors that are evenly spaced from another and form a triangle on the color wheel.



11436630



2792083



10059959

# Complementary

The Complementary color scheme is a pair of colors which are on the opposite of each other on the color wheel.



11436630



5669550

# Split Complementary

Split-complementary colors differ from the complementary color scheme. The scheme consists of three colors, the original color and two neighbors of the complement color.



7375554



11436630



956589

# Square

The Square scheme is like the rectangle color scheme, but the four colors are evenly spaced on the color wheel.



11436630



5478517



4101055



11892639

# Rectangle

The Rectangle color scheme consists of four colors that form a rectangle on the color wheel.



11436630



8491352



4101055



9274556



# Sweetspot

The Sweet Spot groups the original color and five complimentary colors.



11436630



14930625



11425410



7563358



15921906



7566195



# Same Dimension

The Same Dimension uses a secret algorithm to generate beautiful new colors.



11436630



14917209



11447638



5722702



9849600



1510144



# Inverse Universe

The Inverse Universe completely reimagines the original color for something new.



5669550



5873379



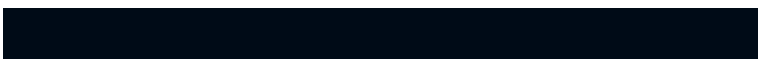
5658286



5132887



19350

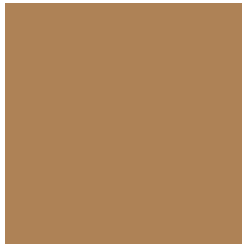


2839



# Previews

## White Background



This preview shows how the Decimal color 11436630 looks on a white background.

## Color Contrast Check

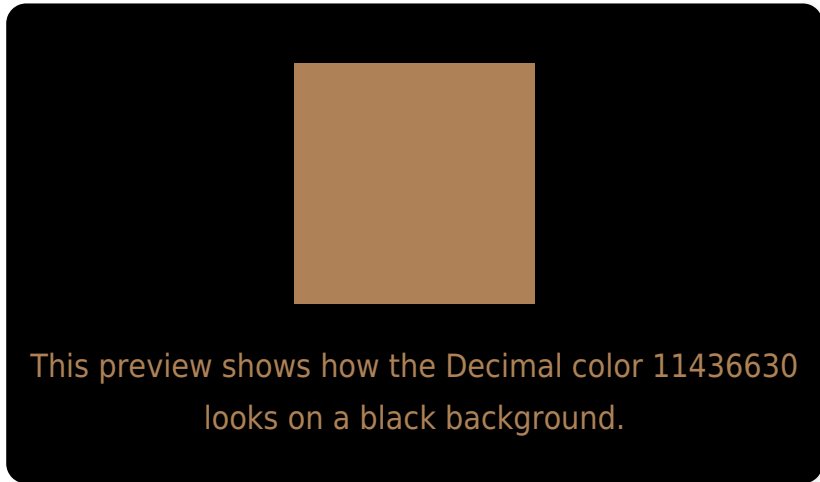
Large Text (above 18pt) WCAG AA ✓ Pass

Any Text WCAG AA × Fail

Large Text (above 18pt) WCAG AAA × Fail

Any Text WCAG AAA × Fail

# Black Background



## Color Contrast Check

Large Text (above 18pt) WCAG AA ✓ Pass

Any Text WCAG AA ✓ Pass

Large Text (above 18pt) WCAG AAA ✓ Pass

Any Text WCAG AAA × Fail

If you want to check with other color combinations, try the [Color Contrast Checker](#).



## Decimal 11436630 Background



This preview shows how black text looks on a background with the Decimal color 11436630.



This preview shows how white text looks on a background with the Decimal color 11436630.

# Color Blindness Simulation

Color vision deficiency is a very complex topic, and I could not describe the different causes any better than Wikipedia does, so if you want to learn more, you should check out their [article about color blindness](#).


## Dichromacy



**Original Color**  
11436630

**Protanopia**  
9931609

**Deuteranopia**  
11044181



**Tritanopia**  
11697286

# Trichromacy



**Original Color**  
11436630

**Protanomaly**  
10455128

**Deuteranomaly**  
11174997

**Tritanomaly**  
11632245

# Monochromacy



**Original Color**  
11436630

**Achromatopsia**  
9079434

**Achromatomaly**  
9930615

# CSS Examples

## Text

The CSS property to change the color of the text to Decimal 11436630 is called "color". The color property can be set on classes, ids or directly on the HTML element.

This example shows how text in the color #AE8256 looks like.

```
.text, #text, p{  
  color:#AE8256  
}
```

If you want to add a text shadow in that color use the text-shadow property, you can generate a text shadow directly with our [CSS Text Shadow Generator](#).

Here you see how black text with a 4 pixel #AE8256 colored shadow looks like.

```
.shadow{ text-shadow: 4px 4px 2px #AE8256  
}
```

## Border

The CSS property to change the border of an element to Decimal 11436630 is called "border". The border property can be set on classes, ids or directly on the HTML element.

This example shows the color as border, it can be applied via the CSS property "border" or "border-color".

```
.border, #border, table{ border:4px solid  
#AE8256 }
```

If only the border color should be changed use the property `border-color`.

```
.border{ border-color:#AE8256 }
```

If you want to add a box shadow in that color use:

Here you see how a box with a 4 pixel #AE8256 colored shadow looks like.

```
.boxshadow{ -moz-box-shadow:4px 4px 4px  
4px #AE8256; -webkit-box-shadow:4px 4px  
4px 4px #AE8256; box-shadow:4px 4px 4px  
4px #AE8256 }
```

# Background

The CSS property to change the background color of an element to Decimal 11436630 is called "background". The background property can be set on classes, ids or directly on the HTML element.

```
.background, #background, body{  
background:#AE8256 }
```

If only the background color should be changed can be used:

```
.background{ background-color:#AE8256 }
```

This example shows the color as background, it is applied via the CSS property "background".

To optimize and compress your CSS code, you can use our [online CSS compressor and optimizer](#) based on csstidy. If you want to create a linear or radial gradient as background or border, check our [CSS Gradient Generator](#).



Hey! You found this booklet interesting? Support Converting Colors with the new Membership Option!

The pro membership hides all ads, plus gives you double the colors in the color bucket, and more awesome pro features!

**[Learn more, Memberships starting at \\$2.50/m!](#)**

**Follow me  
on Twitter!**

@ConvertingColor