

Converting Colors

Decimal(11437419)

Have a look what the booklet for
Decimal(11437419) contains.

Decimal(11437419)	3
<i>Conversions</i>	4
<i>Details</i>	6
<i>Harmonies</i>	11
<i>Previews</i>	23
<i>Color Blindness Simulation</i>	26
<i>CSS Examples</i>	29

Color

Decimal(11437419)

Conversions

Conversions Part 1

Format	Color
Hex	AE856B
RGB	174, 133, 107
RGB Percent	68%, 52%, 42%
CMY	0.3176, 0.4784, 0.5804
CMYK	0.00, 0.24, 0.39, 0.32
HSL	23°, 29%, 55%
HSV	23°, 39%, 68%
XYZ	28.4969, 26.8353, 17.5877
YIQ	142.2950, 32.7820, 0.6060

Conversions

Conversions Part 2

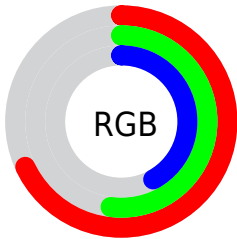
Format	Color
RYB	174, 149, 107
Decimal	11437419
CIELab	58.82, 12.14, 20.08
CIELCh	59, 23.467, 58.840
Yxy	26.8353, 0.3908, 0.3680
Android (android.graphics.Color)	4289627499 (0xFFAE856B)
YUV	142.2950, -17.4004, 27.8053
Hunter-Lab	51.8028, 7.5388, 16.1322

Details

The Decimal color **11437419** is a dark color, and the websafe version is hex **CC9966**. A complement of this color would be **7050414**, and the grayscale version is **9342606**.

A 20% lighter version of the original color is **15186591**, and **7885627** is the 20% darker color. If you saturate the color by 10%, you get **11434586**, and if you desaturate by 10%, it is **11440252**.

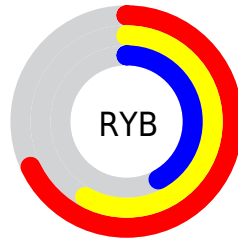
Distribution



Red (68%)

Green (52%)

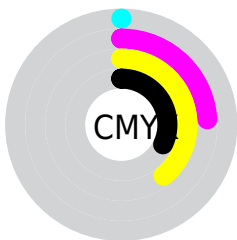
Blue (42%)



Red (68%)

Yellow (58%)

Blue (42%)

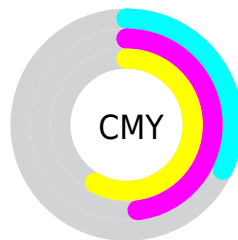


Cyan (0%)

Magenta (24%)

Yellow (39%)

Black (32%)



Cyan (32%)

Magenta (48%)

Yellow (58%)

Brightness & Saturation Gradients

These gradients show how the Decimal color 11437419 changes by changing the brightness by 10 percent. The first figure shows a shift by +10% for each color and the second figure -10%.

Similar to the brightness gradients but the following saturation gradients show a change of the Decimal color 11437419 by changing the saturation by 10% instead.

 11437419

 11437419

16777215

 9661523

 15186591

 7885627

 16766650

 6175781

 16773845

 4531729

 16777202

 2953728

 1114112

 0

 11437419

 11437419

 11434586

 11440252

11432008

11442830

11429175

11445663

11426341

11448497

11423764

11451074

11420931

11453907

11420672

11456741

11459318

11462143

Harmonies

Analogous

The Analogous color harmony consists of three colors that are next to each other on the color wheel.



12025979



11437419



10325092

Triad

The Triadic color harmony groups three colors that are evenly spaced from another and form a triangle on the color wheel.



11437419



5937548



9472433

Complementary

The Complementary color scheme is a pair of colors which are on the opposite of each other on the color wheel.



11437419



7050414

Split Complementary

Split-complementary colors differ from the complementary color scheme. The scheme consists of three colors, the original color and two neighbors of the complement color.



7573686



11437419



5216417

Square

The Square scheme is like the rectangle color scheme, but the four colors are evenly spaced on the color wheel.



11437419



7378808



5871024



10977955

Rectangle

The Rectangle color scheme consists of four colors that form a rectangle on the color wheel.



11437419



9408614



5871024



8817588

Sweetspot

The Sweet Spot groups the original color and five complimentary colors.



11437419



14930632



11430804



7563619



15921906



7566195

Same Dimension

The Same Dimension uses a secret algorithm to generate beautiful new colors.



11437419



14918523



11445867



5722446



9845248



1509632

Inverse Universe

The Inverse Universe completely reimagines the original color for something new.



7050414



8108771



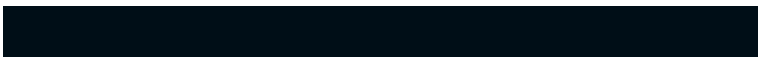
7041966



5133143



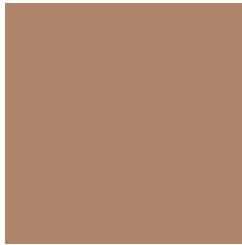
23702



3607

Previews

White Background



This preview shows how the Decimal color 11437419 looks on a white background.

Color Contrast Check

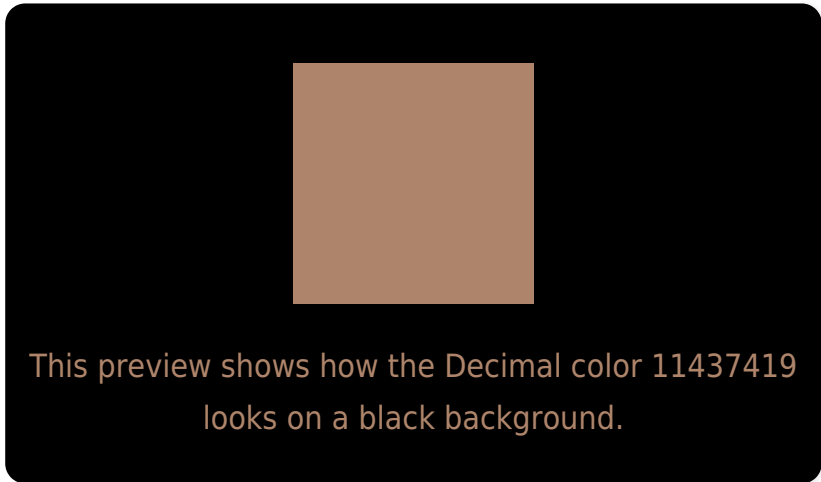
Large Text (above 18pt) WCAG AA ✓ Pass

Any Text WCAG AA × Fail

Large Text (above 18pt) WCAG AAA × Fail

Any Text WCAG AAA × Fail

Black Background



Color Contrast Check

Large Text (above 18pt) WCAG AA ✓ Pass

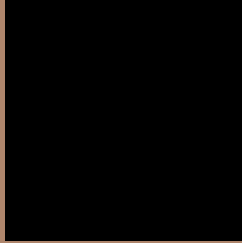
Any Text WCAG AA ✓ Pass

Large Text (above 18pt) WCAG AAA ✓ Pass

Any Text WCAG AAA × Fail

If you want to check with other color combinations, try the [Color Contrast Checker](#).

Decimal 11437419 Background



This preview shows how black text looks on a background with the Decimal color 11437419.

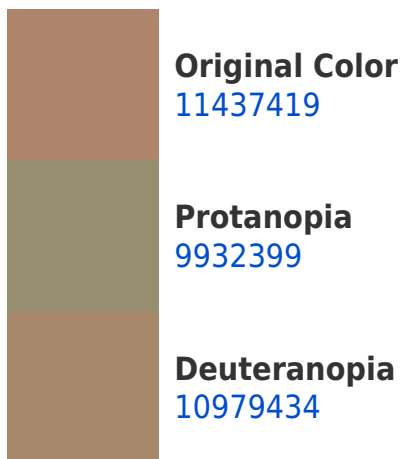



This preview shows how white text looks on a background with the Decimal color 11437419.

Color Blindness Simulation

Color vision deficiency is a very complex topic, and I could not describe the different causes any better than Wikipedia does, so if you want to learn more, you should check out their [article about color blindness](#).

Dichromacy





Tritanopia
11633035

Trichromacy



Original Color

11437419

Protanomaly

10455918

Deuteranomaly

11175786

Tritanomaly

11567743

Monochromacy



Original Color

11437419

Achromatopsia

9342606

Achromatomaly

10128257

CSS Examples

Text

The CSS property to change the color of the text to Decimal 11437419 is called "color". The color property can be set on classes, ids or directly on the HTML element.

This example shows how text in the color #AE856B looks like.

```
.text, #text, p{  
    color:#AE856B  
}
```

If you want to add a text shadow in that color use the text-shadow property, you can generate a text shadow directly with our [CSS Text Shadow Generator](#).

Here you see how black text with a 4 pixel #AE856B colored shadow looks like.

```
.shadow{ text-shadow: 4px 4px 2px #AE856B
}
```

Border

The CSS property to change the border of an element to Decimal 11437419 is called "border". The border property can be set on classes, ids or directly on the HTML element.

This example shows the color as border, it can be applied via the CSS property "border" or "border-color".

```
.border, #border, table{ border:4px solid
#AE856B }
```

If only the border color should be changed use the property `border-color`.

```
.border{ border-color:#AE856B }
```

If you want to add a box shadow in that color use:

Here you see how a box with a 4 pixel #AE856B colored shadow looks like.

```
.boxshadow{ -moz-box-shadow:4px 4px 4px  
4px #AE856B; -webkit-box-shadow:4px 4px  
4px 4px #AE856B; box-shadow:4px 4px 4px  
4px #AE856B }
```

Background

The CSS property to change the background color of an element to Decimal 11437419 is called "background". The background property can be set on classes, ids or directly on the HTML element.

```
.background, #background, body{  
background:#AE856B }
```

If only the background color should be changed can be used:

```
.background{ background-color:#AE856B }
```

This example shows the color as background, it is applied via the CSS property "background".

To optimize and compress your CSS code, you can use our [online CSS compressor and optimizer](#) based on csstidy. If you want to create a linear or radial gradient as background or border, check our [CSS Gradient Generator](#).

Hey! You found this booklet interesting? Support Converting Colors with the new Membership Option!

The pro membership hides all ads, plus gives you double the colors in the color bucket, and more awesome pro features!

[Learn more, Memberships starting at \\$2.50/m!](#)

**Follow me
on Twitter!**

@ConvertingColor