

Converting Colors

Decimal(11437950)

Have a look what the booklet for
Decimal(11437950) contains.

Decimal(11437950)	3
<i>Conversions</i>	4
<i>Details</i>	6
<i>Harmonies</i>	11
<i>Previews</i>	23
<i>Color Blindness Simulation</i>	26
<i>CSS Examples</i>	29

Color

Decimal(11437950)

Conversions

Conversions Part 1

Format	Color
Hex	AE877E
RGB	174, 135, 126
RGB Percent	68%, 53%, 49%
CMY	0.3176, 0.4706, 0.5059
CMYK	0.00, 0.22, 0.28, 0.32
HSL	11°, 23%, 59%
HSV	11°, 28%, 68%
XYZ	29.8854, 27.8330, 23.5358
YIQ	145.6350, 26.1330, 5.4690

Conversions

Conversions Part 2

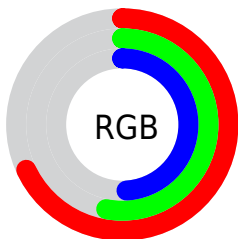
Format	Color
RYB	174, 137, 126
Decimal	11437950
CIELab	59.74, 13.54, 10.55
CIELCh	60, 17.170, 37.925
Yxy	27.8330, 0.3678, 0.3425
Android (android.graphics.Color)	4289628030 (0xFFAE877E)
YUV	145.6350, -9.6801, 24.8761
Hunter-Lab	52.7570, 8.7908, 10.4795

Details

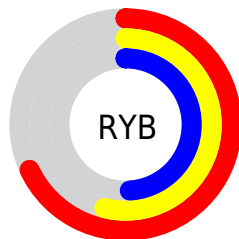
The Decimal color **11437950** is a dark color, and the websafe version is hex **CC9999**. A complement of this color would be **8299950**, and the grayscale version is **9605778**.

A 20% lighter version of the original color is **15121587**, and **7951693** is the 20% darker color. If you saturate the color by 10%, you get **11434349**, and if you desaturate by 10%, it is **11441551**.

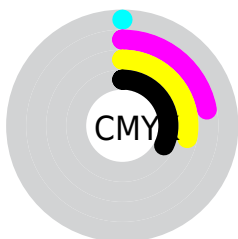
Distribution



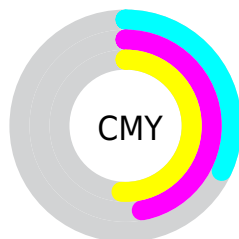
- Red (68%)
- Green (53%)
- Blue (49%)



- Red (68%)
- Yellow (54%)
- Blue (49%)



- Cyan (0%)
- Magenta (22%)
- Yellow (28%)
- Black (32%)



- Cyan (32%)
- Magenta (47%)
- Yellow (51%)

Brightness & Saturation Gradients

These gradients show how the Decimal color 11437950 changes by changing the brightness by 10 percent. The first figure shows a shift by +10% for each color and the second figure -10%.

Similar to the brightness gradients but the following saturation gradients show a change of the Decimal color 11437950 by changing the saturation by 10% instead.

 11437950

 11437950

16777215

 9662053

 15121587

 7951693

 16767182

 6241846

 16774634

 4597793

 3085067

 1638401

 0

 11437950

 11437950

 11434349

 11441551

 11430747

 11445153

 11427146

 11448754

 11423288

 11452612

 11419687

 11456213

 11416086

 11459814

 11412484

 11463416

 11411712

 11467007

 11468799

Harmonies

Analogous

The Analogous color harmony consists of three colors that are next to each other on the color wheel.



11502988



11437950



10914676

Triad

The Triadic color harmony groups three colors that are evenly spaced from another and form a triangle on the color wheel.



11437950



7772292



8687790

Complementary

The Complementary color scheme is a pair of colors which are on the opposite of each other on the color wheel.



11437950



8299950

Split Complementary

Split-complementary colors differ from the complementary color scheme. The scheme consists of three colors, the original color and two neighbors of the complement color.



7443883



11437950



6986131

Square

The Square scheme is like the rectangle color scheme, but the four colors are evenly spaced on the color wheel.



11437950



8820088



6789282



9997224

Rectangle

The Rectangle color scheme consists of four colors that form a rectangle on the color wheel.



11437950



10325618



6789282



8229550

Sweetspot

The Sweet Spot groups the original color and five complimentary colors.



11437950



14931153



11435685



7563623



15921906



7566195

Same Dimension

The Same Dimension uses a secret algorithm to generate beautiful new colors.



11437950



14919320



11444094



5722190



9837568



1508352

Inverse Universe

The Inverse Universe completely reimagines the original color for something new.



8299950



10016227



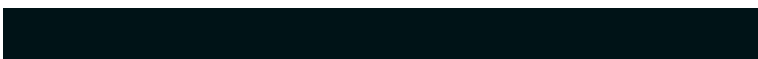
8293806



5133655



31382



4887

Previews

White Background



This preview shows how the Decimal color 11437950 looks on a white background.

Color Contrast Check

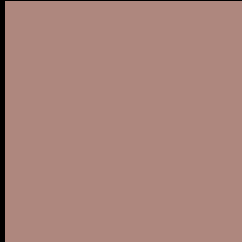
Large Text (above 18pt) WCAG AA ✓ Pass

Any Text WCAG AA × Fail

Large Text (above 18pt) WCAG AAA × Fail

Any Text WCAG AAA × Fail

Black Background



This preview shows how the Decimal color 11437950 looks on a black background.

Color Contrast Check

Large Text (above 18pt) WCAG AA ✓ Pass

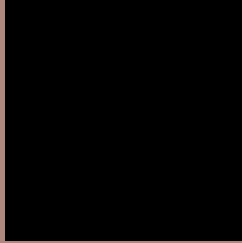
Any Text WCAG AA ✓ Pass

Large Text (above 18pt) WCAG AAA ✓ Pass

Any Text WCAG AAA × Fail

If you want to check with other color combinations, try the [Color Contrast Checker](#).

Decimal 11437950 Background



This preview shows how black text looks on a background with the Decimal color 11437950.



This preview shows how white text looks on a background with the Decimal color 11437950.

Color Blindness Simulation

Color vision deficiency is a very complex topic, and I could not describe the different causes any better than Wikipedia does, so if you want to learn more, you should check out their [article about color blindness](#).


Dichromacy



Original Color
11437950

Protanopia
9867394

Deuteranopia
10849149



Tritanopia
11568527

Trichromacy



Original Color
11437950

Protanomaly
10456449

Deuteranomaly
11045501

Tritanomaly
11503241

Monochromacy



Original Color
11437950

Achromatopsia
9605778

Achromatomaly
10260107

CSS Examples

Text

The CSS property to change the color of the text to Decimal 11437950 is called "color". The color property can be set on classes, ids or directly on the HTML element.

This example shows how text in the color #AE877E looks like.

```
.text, #text, p{  
    color:#AE877E  
}
```

If you want to add a text shadow in that color use the text-shadow property, you can generate a text shadow directly with our [CSS Text Shadow Generator](#).

Here you see how black text with a 4 pixel #AE877E colored shadow looks like.

```
.shadow{ text-shadow: 4px 4px 2px #AE877E
}
```

Border

The CSS property to change the border of an element to Decimal 11437950 is called "border". The border property can be set on classes, ids or directly on the HTML element.

This example shows the color as border, it can be applied via the CSS property "border" or "border-color".

```
.border, #border, table{ border:4px solid
#AE877E }
```

If only the border color should be changed use the property `border-color`.

```
.border{ border-color:#AE877E }
```

If you want to add a box shadow in that color use:

Here you see how a box with a 4 pixel #AE877E colored shadow looks like.

```
.boxshadow{ -moz-box-shadow:4px 4px 4px  
4px #AE877E; -webkit-box-shadow:4px 4px  
4px 4px #AE877E; box-shadow:4px 4px 4px  
4px #AE877E }
```

Background

The CSS property to change the background color of an element to Decimal 11437950 is called "background". The background property can be set on classes, ids or directly on the HTML element.

```
.background, #background, body{  
background:#AE877E }
```

If only the background color should be changed can be used:

```
.background{ background-color:#AE877E }
```

This example shows the color as background, it is applied via the CSS property "background".

To optimize and compress your CSS code, you can use our [online CSS compressor and optimizer](#) based on csstidy. If you want to create a linear or radial gradient as background or border, check our [CSS Gradient Generator](#).

Hey! You found this booklet interesting? Support Converting Colors with the new Membership Option!

The pro membership hides all ads, plus gives you double the colors in the color bucket, and more awesome pro features!

[Learn more, Memberships starting at \\$2.50/m!](#)

**Follow me
on Twitter!**

@ConvertingColor