

Converting Colors

Decimal(11437961)

Have a look what the booklet for
Decimal(11437961) contains.

Decimal(11437961)	3
<i>Conversions</i>	4
<i>Details</i>	6
<i>Harmonies</i>	11
<i>Previews</i>	23
<i>Color Blindness Simulation</i>	26
<i>CSS Examples</i>	29

Color

Decimal(11437961)

Conversions

Conversions Part 1

Format	Color
Hex	AE8789
RGB	174, 135, 137
RGB Percent	68%, 53%, 54%
CMY	0.3176, 0.4706, 0.4627
CMYK	0.00, 0.22, 0.21, 0.32
HSL	357°, 19%, 61%
HSV	357°, 22%, 68%
XYZ	30.6349, 28.1328, 27.4824
YIQ	146.8890, 22.6020, 8.8900

Conversions

Conversions Part 2

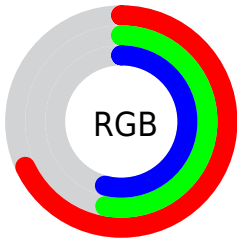
Format	Color
RYB	174, 135, 137
Decimal	11437961
CIELab	60.01, 15.19, 4.65
CIELCh	60, 15.891, 17.032
Yxy	28.1328, 0.3552, 0.3262
Android (android.graphics.Color)	4289628041 (0xFFAE8789)
YUV	146.8890, -4.8753, 23.7763
Hunter-Lab	53.0403, 10.2770, 6.4076

Details

The Decimal color **11437961** is a dark color, and the websafe version is hex **CC9999**. A complement of this color would be **8892076**, and the grayscale version is **9671571**.

A 20% lighter version of the original color is **15121598**, and **7951703** is the 20% darker color. If you saturate the color by 10%, you get **11433592**, and if you desaturate by 10%, it is **11442330**.

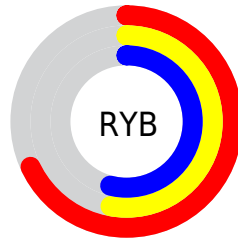
Distribution



Red (68%)

Green (53%)

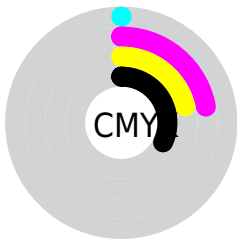
Blue (54%)



Red (68%)

Yellow (53%)

Blue (54%)

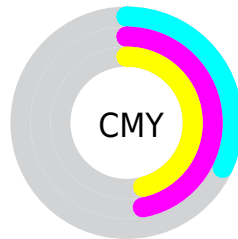


Cyan (0%)

Magenta (22%)

Yellow (21%)

Black (32%)



Cyan (32%)

Magenta (47%)

Yellow (46%)

Brightness & Saturation Gradients

These gradients show how the Decimal color 11437961 changes by changing the brightness by 10 percent. The first figure shows a shift by +10% for each color and the second figure -10%.

Similar to the brightness gradients but the following saturation gradients show a change of the Decimal color 11437961 by changing the saturation by 10% instead.

 11437961

 11437961

16777215

 9662064

 15121598

 7951703

 16767194

 6241856

 16774647

 4663082


 3150614

 1900545

 0

 11437961

 11437961

 11433592

 11442330

 11428968

 11446954

 11424599

 11451323

 11419975

 11455947

 11415606

 11460316

 11411238

 11464684

 11406613

 11468797

 11403273

 11468799

Harmonies

Analogous

The Analogous color harmony consists of three colors that are next to each other on the color wheel.



11110295



11437961



11241853

Triad

The Triadic color harmony groups three colors that are evenly spaced from another and form a triangle on the color wheel.



11437961



8623741



7967915

Complementary

The Complementary color scheme is a pair of colors which are on the opposite of each other on the color wheel.



11437961



8892076

Split Complementary

Split-complementary colors differ from the complementary color scheme. The scheme consists of three colors, the original color and two neighbors of the complement color.



7182245



11437961



7706762

Square

The Square scheme is like the rectangle color scheme, but the four colors are evenly spaced on the color wheel.



11437961



9671286



7117208



9146283

Rectangle

The Rectangle color scheme consists of four colors that form a rectangle on the color wheel.



11437961



10849399



7117208



7640490

Sweetspot

The Sweet Spot groups the original color and five complimentary colors.



11437961



14930900



11241390



7563882



15921906



7566195

Same Dimension

The Same Dimension uses a secret algorithm to generate beautiful new colors.



11437961



14919337



11442311



5721678



9830408



1507329

Inverse Universe

The Inverse Universe completely reimagines the original color for something new.



11437961



14919337



8887726



5721678



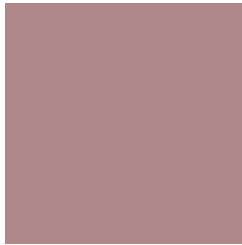
9830408



1507329

Previews

White Background



This preview shows how the Decimal color 11437961 looks on a white background.

Color Contrast Check

Large Text (above 18pt) WCAG AA ✓ Pass

Any Text WCAG AA ✗ Fail

Large Text (above 18pt) WCAG AAA ✗ Fail

Any Text WCAG AAA ✗ Fail

Black Background



This preview shows how the Decimal color 11437961 looks on a black background.

Color Contrast Check

Large Text (above 18pt) WCAG AA ✓ Pass

Any Text WCAG AA ✓ Pass

Large Text (above 18pt) WCAG AAA ✓ Pass

Any Text WCAG AAA × Fail

If you want to check with other color combinations, try the [Color Contrast Checker](#).

Decimal 11437961 Background



This preview shows how black text looks on a background with the Decimal color 11437961.




This preview shows how white text looks on a background with the Decimal color 11437961.

Color Blindness Simulation

Color vision deficiency is a very complex topic, and I could not describe the different causes any better than Wikipedia does, so if you want to learn more, you should check out their [article about color blindness](#).

Dichromacy





Tritanopia
11503248

Trichromacy



Original Color
11437961

Protanomaly
10325388

Deuteranomaly
10914440

Tritanomaly
11503245

Monochromacy



Original Color
11437961

Achromatopsia
9671571

Achromatomaly
10325903

CSS Examples

Text

The CSS property to change the color of the text to Decimal 11437961 is called "color". The color property can be set on classes, ids or directly on the HTML element.

This example shows how text in the color #AE8789 looks like.

```
.text, #text, p{  
    color:#AE8789  
}
```

If you want to add a text shadow in that color use the text-shadow property, you can generate a text shadow directly with our [CSS Text Shadow Generator](#).

Here you see how black text with a 4 pixel #AE8789 colored shadow looks like.

```
.shadow{ text-shadow: 4px 4px 2px #AE8789
}
```

Border

The CSS property to change the border of an element to Decimal 11437961 is called "border". The border property can be set on classes, ids or directly on the HTML element.

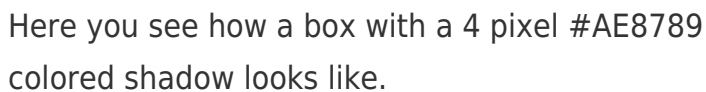
This example shows the color as border, it can be applied via the CSS property "border" or "border-color".

```
.border, #border, table{ border:4px solid
#AE8789 }
```

If only the border color should be changed use the property `border-color`.

```
.border{ border-color:#AE8789 }
```

If you want to add a box shadow in that color use:



Here you see how a box with a 4 pixel #AE8789 colored shadow looks like.

```
.boxshadow{ -moz-box-shadow:4px 4px 4px  
4px #AE8789; -webkit-box-shadow:4px 4px  
4px 4px #AE8789; box-shadow:4px 4px 4px  
4px #AE8789 }
```

Background

The CSS property to change the background color of an element to Decimal 11437961 is called "background". The background property can be set on classes, ids or directly on the HTML element.

```
.background, #background, body{  
background:#AE8789 }
```

If only the background color should be changed can be used:

```
.background{ background-color:#AE8789 }
```

This example shows the color as background, it is applied via the CSS property "background".

To optimize and compress your CSS code, you can use our [online CSS compressor and optimizer](#) based on csstidy. If you want to create a linear or radial gradient as background or border, check our [CSS Gradient Generator](#).

Hey! You found this booklet interesting? Support Converting Colors with the new Membership Option!

The pro membership hides all ads, plus gives you double the colors in the color bucket, and more awesome pro features!

[Learn more, Memberships starting at \\$2.50/m!](#)

**Follow me
on Twitter!**

@ConvertingColor