

Converting Colors

Decimal(11438447)

Have a look what the booklet for
Decimal(11438447) contains.

Decimal(11438447)	3
<i>Conversions</i>	4
<i>Details</i>	6
<i>Harmonies</i>	11
<i>Previews</i>	23
<i>Color Blindness Simulation</i>	26
<i>CSS Examples</i>	29

Color

Decimal(11438447)

Conversions

Conversions Part 1

Format	Color
Hex	AE896F
RGB	174, 137, 111
RGB Percent	68%, 54%, 44%
CMY	0.3176, 0.4627, 0.5647
CMYK	0.00, 0.21, 0.36, 0.32
HSL	25°, 28%, 56%
HSV	25°, 36%, 68%
XYZ	29.2705, 28.0377, 18.9080
YIQ	145.0990, 30.3980, -0.2420

Conversions

Conversions Part 2

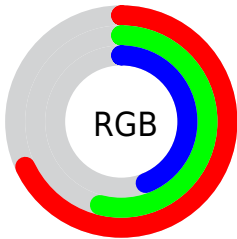
Format	Color
RYB	174, 155, 111
Decimal	11438447
CIELab	59.92, 10.40, 19.32
CIElCh	60, 21.940, 61.713
Yxy	28.0377, 0.3840, 0.3679
Android (android.graphics.Color)	4289628527 (0xFFAE896F)
YUV	145.0990, -16.8108, 25.3462
Hunter-Lab	52.9506, 6.0090, 15.8937

Details

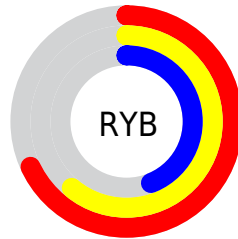
The Decimal color **11438447** is a dark color, and the websafe version is hex **CC9966**. A complement of this color would be **7312558**, and the grayscale version is **9539985**.

A 20% lighter version of the original color is **15187619**, and **7886655** is the 20% darker color. If you saturate the color by 10%, you get **11435870**, and if you desaturate by 10%, it is **11441024**.

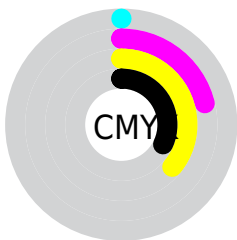
Distribution



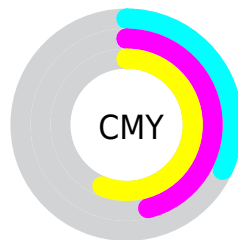
- Red (68%)
- Green (54%)
- Blue (44%)



- Red (68%)
- Yellow (61%)
- Blue (44%)



- Cyan (0%)
- Magenta (21%)
- Yellow (36%)
- Black (32%)



- Cyan (32%)
- Magenta (46%)
- Yellow (56%)

Brightness & Saturation Gradients

These gradients show how the Decimal color 11438447 changes by changing the brightness by 10 percent. The first figure shows a shift by +10% for each color and the second figure -10%.

Similar to the brightness gradients but the following saturation gradients show a change of the Decimal color 11438447 by changing the saturation by 10% instead.

 11438447  11438447

16777215  9662550

 15187619  7886655

 16767678  6176809

 16775130  4532756

 16777206  3020032

 1441792

 0

 11438447  11438447

 11435870  11441024

■ 11433292

■ 11443602

■ 11430459

■ 11446435

■ 11427881

■ 11449013

■ 11425304

■ 11451590

■ 11422727

■ 11454167

■ 11421696

■ 11457001

■ 11459578

■ 11462143

Harmonies

Analogous

The Analogous color harmony consists of three colors that are next to each other on the color wheel.



12027005



11438447



10391402

Triad

The Triadic color harmony groups three colors that are evenly spaced from another and form a triangle on the color wheel.



11438447



6331281



9800625

Complementary

The Complementary color scheme is a pair of colors which are on the opposite of each other on the color wheel.



11438447



7312558

Split Complementary

Split-complementary colors differ from the complementary color scheme. The scheme consists of three colors, the original color and two neighbors of the complement color.



8032951



11438447



5807012

Square

The Square scheme is like the rectangle color scheme, but the four colors are evenly spaced on the color wheel.



11438447



7510398



6461362



11175331

Rectangle

The Rectangle color scheme consists of four colors that form a rectangle on the color wheel.



11438447



9475180



6461362



9211316

Sweetspot

The Sweet Spot groups the original color and five complimentary colors.



11438447



14931146



11431829



7563876



15921906



7566195

Same Dimension

The Same Dimension uses a secret algorithm to generate beautiful new colors.



11438447



14920321



11446383



5722702



9846272



1509632

Inverse Universe

The Inverse Universe completely reimagines the original color for something new.



7312558



8502243



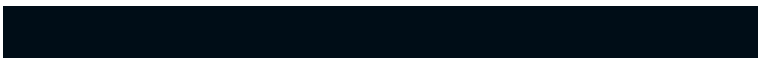
7304622



5133143



22678



3351

Previews

White Background



This preview shows how the Decimal color 11438447 looks on a white background.

Color Contrast Check

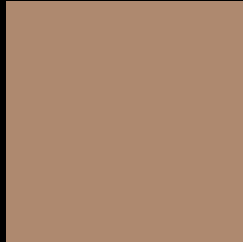
Large Text (above 18pt) WCAG AA ✓ Pass

Any Text WCAG AA × Fail

Large Text (above 18pt) WCAG AAA × Fail

Any Text WCAG AAA × Fail

Black Background



This preview shows how the Decimal color 11438447 looks on a black background.

Color Contrast Check

Large Text (above 18pt) WCAG AA ✓ Pass

Any Text WCAG AA ✓ Pass

Large Text (above 18pt) WCAG AAA ✓ Pass

Any Text WCAG AAA × Fail

If you want to check with other color combinations, try the [Color Contrast Checker](#).

Decimal 11438447 Background



This preview shows how black text looks on a background with the Decimal color 11438447.



This preview shows how white text looks on a background with the Decimal color 11438447.

Color Blindness Simulation

Color vision deficiency is a very complex topic, and I could not describe the different causes any better than Wikipedia does, so if you want to learn more, you should check out their [article about color blindness](#).


Dichromacy



Original Color
11438447

Protanopia
10129522

Deuteranopia
11176815



Tritanopia
11634063

Trichromacy



Original Color

11438447

Protanomaly

10587505

Deuteranomaly

11242095

Tritanomaly

11568771

Monochromacy



Original Color

11438447

Achromatopsia

9539985

Achromatomaly

10260101

CSS Examples

Text

The CSS property to change the color of the text to Decimal 11438447 is called "color". The color property can be set on classes, ids or directly on the HTML element.

This example shows how text in the color #AE896F looks like.

```
.text, #text, p{  
  color:#AE896F  
}
```

If you want to add a text shadow in that color use the text-shadow property, you can generate a text shadow directly with our [CSS Text Shadow Generator](#).

Here you see how black text with a 4 pixel #AE896F colored shadow looks like.

```
.shadow{ text-shadow: 4px 4px 2px #AE896F
}
```

Border

The CSS property to change the border of an element to Decimal 11438447 is called "border". The border property can be set on classes, ids or directly on the HTML element.

This example shows the color as border, it can be applied via the CSS property "border" or "border-color".

```
.border, #border, table{ border:4px solid
#AE896F }
```

If only the border color should be changed use the property `border-color`.

```
.border{ border-color:#AE896F }
```

If you want to add a box shadow in that color use:

Here you see how a box with a 4 pixel #AE896F colored shadow looks like.

```
.boxshadow{ -moz-box-shadow:4px 4px 4px  
4px #AE896F; -webkit-box-shadow:4px 4px  
4px 4px #AE896F; box-shadow:4px 4px 4px  
4px #AE896F }
```

Background

The CSS property to change the background color of an element to Decimal 11438447 is called "background". The background property can be set on classes, ids or directly on the HTML element.

```
.background, #background, body{  
background:#AE896F }
```

If only the background color should be changed can be used:

```
.background{ background-color:#AE896F }
```

This example shows the color as background, it is applied via the CSS property "background".

To optimize and compress your CSS code, you can use our [online CSS compressor and optimizer](#) based on csstidy. If you want to create a linear or radial gradient as background or border, check our [CSS Gradient Generator](#).

Hey! You found this booklet interesting? Support Converting Colors with the new Membership Option!

The pro membership hides all ads, plus gives you double the colors in the color bucket, and more awesome pro features!

[Learn more, Memberships starting at \\$2.50/m!](#)

**Follow me
on Twitter!**

@ConvertingColor