

Converting Colors

Decimal(11438720)

Have a look what the booklet for
Decimal(11438720) contains.

Decimal(11438720)	3
<i>Conversions</i>	4
<i>Details</i>	6
<i>Harmonies</i>	11
<i>Previews</i>	23
<i>Color Blindness Simulation</i>	26
<i>CSS Examples</i>	29

Color

Decimal(11438720)

Conversions

Conversions Part 1

Format	Color
Hex	AE8A80
RGB	174, 138, 128
RGB Percent	68%, 54%, 50%
CMY	0.3176, 0.4588, 0.4980
CMYK	0.00, 0.21, 0.26, 0.32
HSL	13°, 22%, 59%
HSV	13°, 26%, 68%
XYZ	30.4403, 28.7341, 24.3639
YIQ	147.6240, 24.6660, 4.5220

Conversions

Conversions Part 2

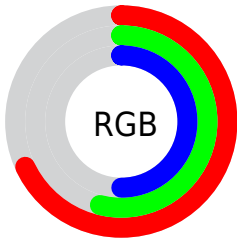
Format	Color
RYB	174, 141, 128
Decimal	11438720
CIELab	60.55, 12.15, 10.56
CIELCh	61, 16.094, 40.986
Yxy	28.7341, 0.3644, 0.3440
Android (android.graphics.Color)	4289628800 (0xFFAE8A80)
YUV	147.6240, -9.6746, 23.1318
Hunter-Lab	53.6042, 7.5577, 10.5748

Details

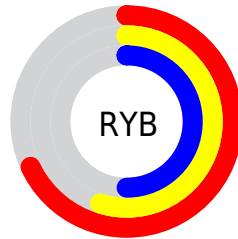
The Decimal color **11438720** is a dark color, and the websafe version is hex **CC9999**. A complement of this color would be **8430766**, and the grayscale version is **9737364**.

A 20% lighter version of the original color is **15122613**, and **7952463** is the 20% darker color. If you saturate the color by 10%, you get **11435119**, and if you desaturate by 10%, it is **11442321**.

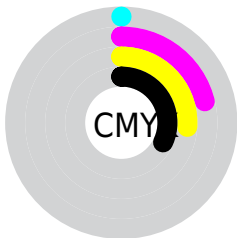
Distribution



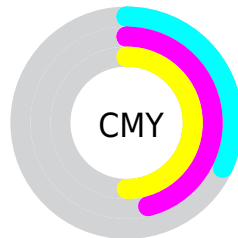
- Red (68%)
- Green (54%)
- Blue (50%)



- Red (68%)
- Yellow (55%)
- Blue (50%)



- Cyan (0%)
- Magenta (21%)
- Yellow (26%)
- Black (32%)



- Cyan (32%)
- Magenta (46%)
- Yellow (50%)

Brightness & Saturation Gradients

These gradients show how the Decimal color 11438720 changes by changing the brightness by 10 percent. The first figure shows a shift by +10% for each color and the second figure -10%.

Similar to the brightness gradients but the following saturation gradients show a change of the Decimal color 11438720 by changing the saturation by 10% instead.

 11438720

 11438720

16777215

 9662823

 15122613

 7952463

 16767952

 6242616

 16775405

 4663843

 3085837

 1703936

 0

 11438720

 11438720

 11435119

 11442321

■ 11431773

■ 11445667

■ 11428172

■ 11449268

■ 11424826

■ 11452614

■ 11421225

■ 11456215

■ 11417624

■ 11459816

■ 11414278

■ 11463162

■ 11412992

■ 11466751

■ 11468799

Harmonies

Analogous

The Analogous color harmony consists of three colors that are next to each other on the color wheel.



11503757



11438720



10849912

Triad

The Triadic color harmony groups three colors that are evenly spaced from another and form a triangle on the color wheel.



11438720



7903624



9015726

Complementary

The Complementary color scheme is a pair of colors which are on the opposite of each other on the color wheel.



11438720



8430766

Split Complementary

Split-complementary colors differ from the complementary color scheme. The scheme consists of three colors, the original color and two neighbors of the complement color.



7837356



11438720



7248535

Square

The Square scheme is like the rectangle color scheme, but the four colors are evenly spaced on the color wheel.



11438720



8951676



7182756



10194343

Rectangle

The Rectangle color scheme consists of four colors that form a rectangle on the color wheel.



11438720



10326390



7182756



8623022

Sweetspot

The Sweet Spot groups the original color and five complimentary colors.



11438720



14931409



11436196



7563879



15921906



7566195

Same Dimension

The Same Dimension uses a secret algorithm to generate beautiful new colors.



11438720



14920346



11444608



5722190



9838848



1508608

Inverse Universe

The Inverse Universe completely reimagines the original color for something new.



8430766



10146787



8424878



5133655



30358



4631

Previews

White Background



This preview shows how the Decimal color 11438720 looks on a white background.

Color Contrast Check

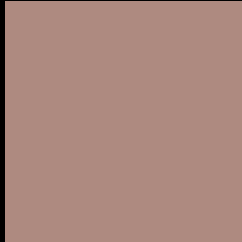
Large Text (above 18pt) WCAG AA ✓ Pass

Any Text WCAG AA × Fail

Large Text (above 18pt) WCAG AAA × Fail

Any Text WCAG AAA × Fail

Black Background



This preview shows how the Decimal color 11438720 looks on a black background.

Color Contrast Check

Large Text (above 18pt) WCAG AA ✓ Pass

Any Text WCAG AA ✓ Pass

Large Text (above 18pt) WCAG AAA ✓ Pass

Any Text WCAG AAA × Fail

If you want to check with other color combinations, try the [Color Contrast Checker](#).

Decimal 11438720 Background



This preview shows how black text looks on a background with the Decimal color 11438720.




This preview shows how white text looks on a background with the Decimal color 11438720.

Color Blindness Simulation

Color vision deficiency is a very complex topic, and I could not describe the different causes any better than Wikipedia does, so if you want to learn more, you should check out their [article about color blindness](#).

Dichromacy





Tritanopia
11569042

Trichromacy



Original Color
11438720

Protanomaly
10522499

Deuteranomaly
11177087

Tritanomaly
11503755

Monochromacy



Original Color
11438720

Achromatopsia
9737364

Achromatomaly
10326157

CSS Examples

Text

The CSS property to change the color of the text to Decimal 11438720 is called "color". The color property can be set on classes, ids or directly on the HTML element.

This example shows how text in the color #AE8A80 looks like.

```
.text, #text, p{  
    color:#AE8A80  
}
```

If you want to add a text shadow in that color use the text-shadow property, you can generate a text shadow directly with our [CSS Text Shadow Generator](#).

Here you see how black text with a 4 pixel #AE8A80 colored shadow looks like.

```
.shadow{ text-shadow: 4px 4px 2px #AE8A80
}
```

Border

The CSS property to change the border of an element to Decimal 11438720 is called "border". The border property can be set on classes, ids or directly on the HTML element.

This example shows the color as border, it can be applied via the CSS property "border" or "border-color".

```
.border, #border, table{ border:4px solid
#AE8A80 }
```

If only the border color should be changed use the property `border-color`.

```
.border{ border-color:#AE8A80 }
```

If you want to add a box shadow in that color use:

Here you see how a box with a 4 pixel #AE8A80 colored shadow looks like.

```
.boxshadow{ -moz-box-shadow:4px 4px 4px  
4px #AE8A80; -webkit-box-shadow:4px 4px  
4px 4px #AE8A80; box-shadow:4px 4px 4px  
4px #AE8A80 }
```

Background

The CSS property to change the background color of an element to Decimal 11438720 is called "background". The background property can be set on classes, ids or directly on the HTML element.

```
.background, #background, body{  
background:#AE8A80 }
```

If only the background color should be changed can be used:

```
.background{ background-color:#AE8A80 }
```

This example shows the color as background, it is applied via the CSS property "background".

To optimize and compress your CSS code, you can use our [online CSS compressor and optimizer](#) based on csstidy. If you want to create a linear or radial gradient as background or border, check our [CSS Gradient Generator](#).

Hey! You found this booklet interesting? Support Converting Colors with the new Membership Option!

The pro membership hides all ads, plus gives you double the colors in the color bucket, and more awesome pro features!

[Learn more, Memberships starting at \\$2.50/m!](#)

**Follow me
on Twitter!**

@ConvertingColor