

Converting Colors

Decimal(11439492)

Have a look what the booklet for
Decimal(11439492) contains.

Decimal(11439492)	3
<i>Conversions</i>	4
<i>Details</i>	6
<i>Harmonies</i>	11
<i>Previews</i>	23
<i>Color Blindness Simulation</i>	26
<i>CSS Examples</i>	29

Color

Decimal(11439492)

Conversions

Conversions Part 1

Format	Color
Hex	AE8D84
RGB	174, 141, 132
RGB Percent	68%, 55%, 52%
CMY	0.3176, 0.4471, 0.4824
CMYK	0.00, 0.19, 0.24, 0.32
HSL	13°, 21%, 60%
HSV	13°, 24%, 68%
XYZ	31.1453, 29.7144, 25.9237
YIQ	149.8410, 22.5570, 4.1970

Conversions

Conversions Part 2

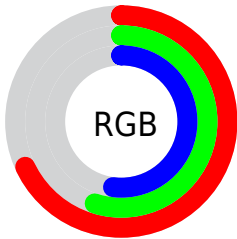
Format	Color
RYB	174, 143, 132
Decimal	11439492
CIELab	61.41, 11.06, 9.50
CIELCh	61, 14.581, 40.667
Yxy	29.7144, 0.3589, 0.3424
Android (android.graphics.Color)	4289629572 (0xFFAE8D84)
YUV	149.8410, -8.7956, 21.1874
Hunter-Lab	54.5109, 6.5936, 9.9611

Details

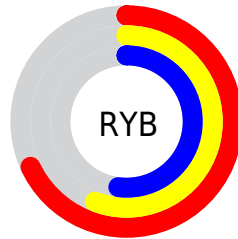
The Decimal color **11439492** is a dark color, and the websafe version is hex **CC9999**. A complement of this color would be **8693166**, and the grayscale version is **9868950**.

A 20% lighter version of the original color is **15123385**, and **7953235** is the 20% darker color. If you saturate the color by 10%, you get **11435891**, and if you desaturate by 10%, it is **11443093**.

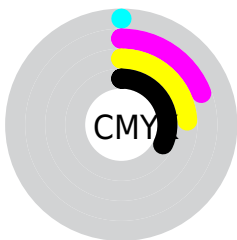
Distribution



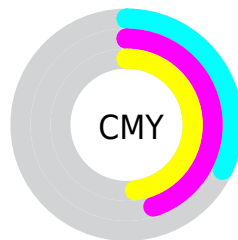
- Red (68%)
- Green (55%)
- Blue (52%)



- Red (68%)
- Yellow (56%)
- Blue (52%)



- Cyan (0%)
- Magenta (19%)
- Yellow (24%)
- Black (32%)



- Cyan (32%)
- Magenta (45%)
- Yellow (48%)

Brightness & Saturation Gradients

These gradients show how the Decimal color 11439492 changes by changing the brightness by 10 percent. The first figure shows a shift by +10% for each color and the second figure -10%.

Similar to the brightness gradients but the following saturation gradients show a change of the Decimal color 11439492 by changing the saturation by 10% instead.



11439492



11439492

16777215



9663339



15123385



7953235



16768981



6308668



16776177



4664614



3151889



1769472



0



11439492



11439492



11435891



11443093

11432545

11446439

11428944

11450040

11425342

11453642

11421997

11456987

11418396

11460588

11414794

11464190

11412736

11467519

11468799

Harmonies

Analogous

The Analogous color harmony consists of three colors that are next to each other on the color wheel.



11504528



11439492



10916220

Triad

The Triadic color harmony groups three colors that are evenly spaced from another and form a triangle on the color wheel.



11439492



8231819



9213101

Complementary

The Complementary color scheme is a pair of colors which are on the opposite of each other on the color wheel.



11439492



8693166

Split Complementary

Split-complementary colors differ from the complementary color scheme. The scheme consists of three colors, the original color and two neighbors of the complement color.



8165548



11439492



7642265

Square

The Square scheme is like the rectangle color scheme, but the four colors are evenly spaced on the color wheel.



11439492



9148800



7576485



10260392

Rectangle

The Rectangle color scheme consists of four colors that form a rectangle on the color wheel.



11439492



10392443



7576485



8820142

Sweetspot

The Sweet Spot groups the original color and five complimentary colors.



11439492



14931667



11437222



7564394



15921906



7566195

Same Dimension

The Same Dimension uses a secret algorithm to generate beautiful new colors.



11439492



14921633



11444612



5722190



9838592



1508608

Inverse Universe

The Inverse Universe completely reimagines the original color for something new.



8693166



10606051



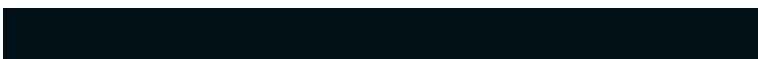
8688046



5133655



30358



4631

Previews

White Background



This preview shows how the Decimal color 11439492 looks on a white background.

Color Contrast Check

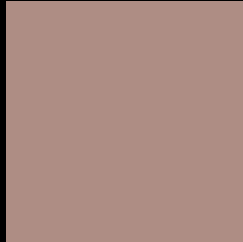
Large Text (above 18pt) WCAG AA ✓ Pass

Any Text WCAG AA × Fail

Large Text (above 18pt) WCAG AAA × Fail

Any Text WCAG AAA × Fail

Black Background



This preview shows how the Decimal color 11439492 looks on a black background.

Color Contrast Check

Large Text (above 18pt) WCAG AA ✓ Pass

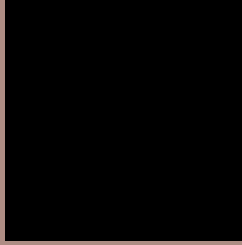
Any Text WCAG AA ✓ Pass

Large Text (above 18pt) WCAG AAA ✓ Pass

Any Text WCAG AAA × Fail

If you want to check with other color combinations, try the [Color Contrast Checker](#).

Decimal 11439492 Background



This preview shows how black text looks on a background with the Decimal color 11439492.




This preview shows how white text looks on a background with the Decimal color 11439492.

Color Blindness Simulation

Color vision deficiency is a very complex topic, and I could not describe the different causes any better than Wikipedia does, so if you want to learn more, you should check out their [article about color blindness](#).

Dichromacy





Tritanopia
11569813

Trichromacy



Original Color
11439492

Protanomaly
10588551

Deuteranomaly
11243140

Tritanomaly
11504527

Monochromacy



Original Color
11439492

Achromatopsia
9868950

Achromatomaly
10457999

CSS Examples

Text

The CSS property to change the color of the text to Decimal 11439492 is called "color". The color property can be set on classes, ids or directly on the HTML element.

This example shows how text in the color #AE8D84 looks like.

```
.text, #text, p{  
    color:#AE8D84  
}
```

If you want to add a text shadow in that color use the text-shadow property, you can generate a text shadow directly with our [CSS Text Shadow Generator](#).

Here you see how black text with a 4 pixel #AE8D84 colored shadow looks like.

```
.shadow{ text-shadow: 4px 4px 2px #AE8D84
}
```

Border

The CSS property to change the border of an element to Decimal 11439492 is called "border". The border property can be set on classes, ids or directly on the HTML element.

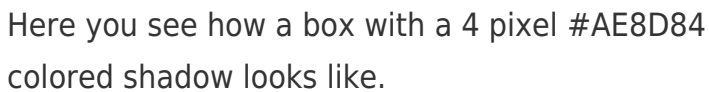
This example shows the color as border, it can be applied via the CSS property "border" or "border-color".

```
.border, #border, table{ border:4px solid
#AE8D84 }
```

If only the border color should be changed use the property `border-color`.

```
.border{ border-color:#AE8D84 }
```

If you want to add a box shadow in that color use:



Here you see how a box with a 4 pixel #AE8D84 colored shadow looks like.

```
.boxshadow{ -moz-box-shadow:4px 4px 4px  
4px #AE8D84; -webkit-box-shadow:4px 4px  
4px 4px #AE8D84; box-shadow:4px 4px 4px  
4px #AE8D84 }
```

Background

The CSS property to change the background color of an element to Decimal 11439492 is called "background". The background property can be set on classes, ids or directly on the HTML element.

```
.background, #background, body{  
background:#AE8D84 }
```

If only the background color should be changed can be used:

```
.background{ background-color:#AE8D84 }
```

This example shows the color as background, it is applied via the CSS property "background".

To optimize and compress your CSS code, you can use our [online CSS compressor and optimizer](#) based on csstidy. If you want to create a linear or radial gradient as background or border, check our [CSS Gradient Generator](#).

Hey! You found this booklet interesting? Support Converting Colors with the new Membership Option!

The pro membership hides all ads, plus gives you double the colors in the color bucket, and more awesome pro features!

[Learn more, Memberships starting at \\$2.50/m!](#)

**Follow me
on Twitter!**

@ConvertingColor