

Converting Colors

Decimal(11441557)

Have a look what the booklet for
Decimal(11441557) contains.

Decimal(11441557)	3
<i>Conversions</i>	4
<i>Details</i>	6
<i>Harmonies</i>	11
<i>Previews</i>	23
<i>Color Blindness Simulation</i>	26
<i>CSS Examples</i>	29

Color

Decimal(11441557)

Conversions

Conversions Part 1

Format	Color
Hex	AE9595
RGB	174, 149, 149
RGB Percent	68%, 58%, 58%
CMY	0.3176, 0.4157, 0.4157
CMYK	0.00, 0.14, 0.14, 0.32
HSL	0°, 13%, 63%
HSV	0°, 14%, 68%
XYZ	33.6278, 32.6635, 32.9661
YIQ	156.4750, 14.9000, 5.3000

Conversions

Conversions Part 2

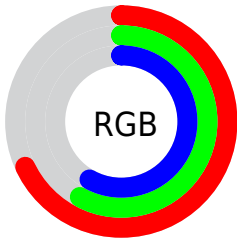
Format	Color
RYB	174, 149, 149
Decimal	11441557
CIELab	63.89, 9.29, 3.44
CIELCh	64, 9.910, 20.313
Yxy	32.6635, 0.3388, 0.3291
Android (android.graphics.Color)	4289631637 (0xFFAE9595)
YUV	156.4750, -3.6852, 15.3694
Hunter-Lab	57.1520, 5.0122, 5.8071

Details

The Decimal color **11441557** is a light color, and the websafe version is hex **999999**. A complement of this color would be **9809582**, and the grayscale version is **10329501**.

A 20% lighter version of the original color is **15125451**, and **7955042** is the 20% darker color. If you saturate the color by 10%, you get **11437188**, and if you desaturate by 10%, it is **11445926**.

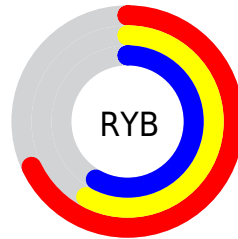
Distribution



Red (68%)

Green (58%)

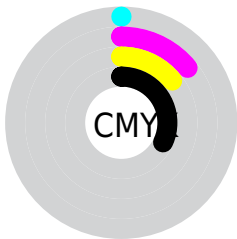
Blue (58%)



Red (68%)

Yellow (58%)

Blue (58%)

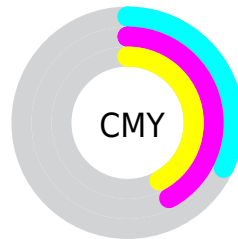


Cyan (0%)

Magenta (14%)

Yellow (14%)

Black (32%)



Cyan (32%)

Magenta (42%)

Yellow (42%)

Brightness & Saturation Gradients

These gradients show how the Decimal color 11441557 changes by changing the brightness by 10 percent. The first figure shows a shift by +10% for each color and the second figure -10%.

Similar to the brightness gradients but the following saturation gradients show a change of the Decimal color 11441557 by changing the saturation by 10% instead.

 11441557

 11441557

16777215

 9665403

 15125451

 7955042

 16771047

 6310475

 4731956

 3218975

 1967878

 0

 11441557

 11441557

 11437188

 11445926

 11432562

 11450552

 11428193

 11454921

 11423567

 11459547

 11419198

 11463916

 11414829

 11468285

 11410203

 11468799

 11405834

 11403264

Harmonies

Analogous

The Analogous color harmony consists of three colors that are next to each other on the color wheel.



11244958



11441557



11310990

Triad

The Triadic color harmony groups three colors that are evenly spaced from another and form a triangle on the color wheel.



11441557



9543311



9346220

Complementary

The Complementary color scheme is a pair of colors which are on the opposite of each other on the color wheel.



11441557



9809582

Split Complementary

Split-complementary colors differ from the complementary color scheme. The scheme consists of three colors, the original color and two neighbors of the complement color.



8888232



11441557



9019543

Square

The Square scheme is like the rectangle color scheme, but the four colors are evenly spaced on the color wheel.



11441557



10263690



8757409



10066347

Rectangle

The Rectangle color scheme consists of four colors that form a rectangle on the color wheel.



11441557



11049098



8757409



9149867

Sweetspot

The Sweet Spot groups the original color and five complimentary colors.



11441557



14932698



11441582



7564653



15921906



7566195

Same Dimension

The Same Dimension uses a secret algorithm to generate beautiful new colors.



11441557



14924988



11444885



5721678



9830400



1507328

Inverse Universe

The Inverse Universe completely reimagines the original color for something new.



9809582



12379107



9806510



5134167



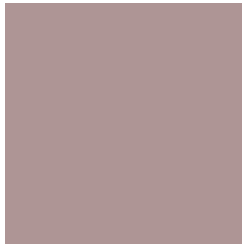
38550



5911

Previews

White Background



This preview shows how the Decimal color 11441557 looks on a white background.

Color Contrast Check

Large Text (above 18pt) WCAG AA × Fail

Any Text WCAG AA × Fail

Large Text (above 18pt) WCAG AAA × Fail

Any Text WCAG AAA × Fail

Black Background



This preview shows how the Decimal color 11441557 looks on a black background.

Color Contrast Check

Large Text (above 18pt) WCAG AA ✓ Pass

Any Text WCAG AA ✓ Pass

Large Text (above 18pt) WCAG AAA ✓ Pass

Any Text WCAG AAA ✓ Pass

If you want to check with other color combinations, try the [Color Contrast Checker](#).

Decimal 11441557 Background



This preview shows how black text looks on a background with the Decimal color 11441557.



This preview shows how white text looks on a background with the Decimal color 11441557.

Color Blindness Simulation

Color vision deficiency is a very complex topic, and I could not describe the different causes any better than Wikipedia does, so if you want to learn more, you should check out their [article about color blindness](#).


Dichromacy



Original Color
[11441557](#)

Protanopia
[10394264](#)

Deuteranopia
[11310741](#)



Tritanopia
11506591

Trichromacy



Original Color
11441557

Protanomaly
10786967

Deuteranomaly
11376277

Tritanomaly
11506843

Monochromacy



Original Color
11441557

Achromatopsia
10263708

Achromatomaly
10721689

CSS Examples

Text

The CSS property to change the color of the text to Decimal 11441557 is called "color". The color property can be set on classes, ids or directly on the HTML element.

This example shows how text in the color #AE9595 looks like.

```
.text, #text, p{  
  color:#AE9595  
}
```

If you want to add a text shadow in that color use the text-shadow property, you can generate a text shadow directly with our [CSS Text Shadow Generator](#).

Here you see how black text with a 4 pixel #AE9595 colored shadow looks like.

```
.shadow{ text-shadow: 4px 4px 2px #AE9595
}
```

Border

The CSS property to change the border of an element to Decimal 11441557 is called "border". The border property can be set on classes, ids or directly on the HTML element.

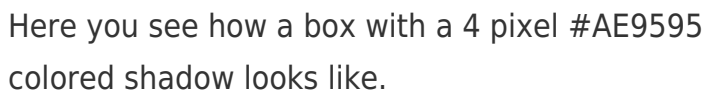
This example shows the color as border, it can be applied via the CSS property "border" or "border-color".

```
.border, #border, table{ border:4px solid
#AE9595 }
```

If only the border color should be changed use the property `border-color`.

```
.border{ border-color:#AE9595 }
```

If you want to add a box shadow in that color use:



Here you see how a box with a 4 pixel `#AE9595` colored shadow looks like.

```
.boxshadow{ -moz-box-shadow:4px 4px 4px  
4px #AE9595; -webkit-box-shadow:4px 4px  
4px 4px #AE9595; box-shadow:4px 4px 4px  
4px #AE9595 }
```

Background

The CSS property to change the background color of an element to Decimal 11441557 is called "background". The background property can be set on classes, ids or directly on the HTML element.

```
.background, #background, body{  
background:#AE9595 }
```

If only the background color should be changed can be used:

```
.background{ background-color:#AE9595 }
```

This example shows the color as background, it is applied via the CSS property "background".

To optimize and compress your CSS code, you can use our [online CSS compressor and optimizer](#) based on csstidy. If you want to create a linear or radial gradient as background or border, check our [CSS Gradient Generator](#).

Hey! You found this booklet interesting? Support Converting Colors with the new Membership Option!

The pro membership hides all ads, plus gives you double the colors in the color bucket, and more awesome pro features!

[Learn more, Memberships starting at \\$2.50/m!](#)

**Follow me
on Twitter!**

@ConvertingColor