

Converting Colors

Decimal(11442848)

Have a look what the booklet for
Decimal(11442848) contains.

Decimal(11442848)	3
<i>Conversions</i>	4
<i>Details</i>	6
<i>Harmonies</i>	11
<i>Previews</i>	23
<i>Color Blindness Simulation</i>	26
<i>CSS Examples</i>	29

Color

Decimal(11442848)

Conversions

Conversions Part 1

Format	Color
Hex	AE9AA0
RGB	174, 154, 160
RGB Percent	68%, 60%, 63%
CMY	0.3176, 0.3961, 0.3725
CMYK	0.00, 0.11, 0.08, 0.32
HSL	342°, 11%, 64%
HSV	342°, 11%, 68%
XYZ	35.3563, 34.6479, 38.0819
YIQ	160.6640, 9.9940, 6.1060

Conversions

Conversions Part 2

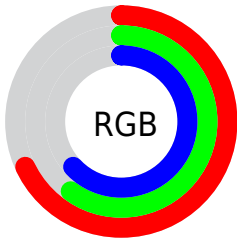
Format	Color
RYB	174, 154, 160
Decimal	11442848
CIELab	65.47, 8.41, -0.44
CIELCh	65, 8.426, 357.002
Yxy	34.6479, 0.3271, 0.3206
Android (android.graphics.Color)	4289632928 (0xFFAE9AA0)
YUV	160.6640, -0.3274, 11.6957
Hunter-Lab	58.8625, 4.2084, 2.8452

Details

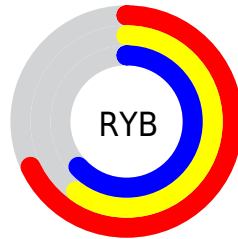
The Decimal color **11442848** is a light color, and the websafe version is hex **999999**. A complement of this color would be **10137256**, and the grayscale version is **10592673**.

A 20% lighter version of the original color is **15126743**, and **7956333** is the 20% darker color. If you saturate the color by 10%, you get **11438484**, and if you desaturate by 10%, it is **11447212**.

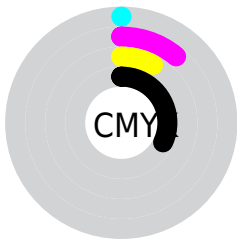
Distribution



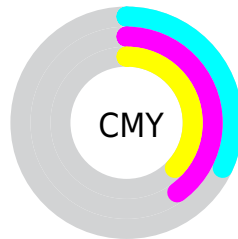
- Red (68%)
- Green (60%)
- Blue (63%)



- Red (68%)
- Yellow (60%)
- Blue (63%)



- Cyan (0%)
- Magenta (11%)
- Yellow (8%)
- Black (32%)



- Cyan (32%)
- Magenta (40%)
- Yellow (37%)

Brightness & Saturation Gradients

These gradients show how the Decimal color 11442848 changes by changing the brightness by 10 percent. The first figure shows a shift by +10% for each color and the second figure -10%.

Similar to the brightness gradients but the following saturation gradients show a change of the Decimal color 11442848 by changing the saturation by 10% instead.

 11442848

 11442848

16777215

 9666694

 15126743

 7956333

 16772595

 6377300

 4798525

 3285543

 1903891

 0

 11442848

 11442848

 11438484

 11447212

 11433864

 11451832

 11429499

 11456197

 11424879

 11460817

 11420515

 11465181

 11416151

 11468777

 11411531

 11468789

 11407167

 11468799

 11403316

Harmonies

Analogous

The Analogous color harmony consists of three colors that are next to each other on the color wheel.



11049895



11442848



11508376

Triad

The Triadic color harmony groups three colors that are evenly spaced from another and form a triangle on the color wheel.



11442848



10396049



9413291

Complementary

The Complementary color scheme is a pair of colors which are on the opposite of each other on the color wheel.



11442848



10137256

Split Complementary

Split-complementary colors differ from the complementary color scheme. The scheme consists of three colors, the original color and two neighbors of the complement color.



9216933



11442848



9806743

Square

The Square scheme is like the rectangle color scheme, but the four colors are evenly spaced on the color wheel.



11442848



10919568



9413790



9871534

Rectangle

The Rectangle color scheme consists of four colors that form a rectangle on the color wheel.



11442848



11443092



9413790



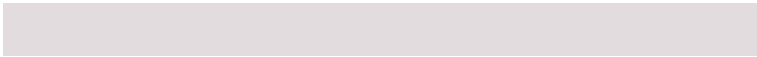
9348010

Sweetspot

The Sweet Spot groups the original color and five complimentary colors.



11442848



14933214



11049646



7564912



15921906



7566195

Same Dimension

The Same Dimension uses a secret algorithm to generate beautiful new colors.



11442848



14926797



11443866



5721681



9830445



1507335

Inverse Universe

The Inverse Universe completely reimagines the original color for something new.



11442848



14926797



10136238



5721681



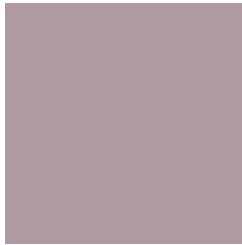
9830445



1507335

Previews

White Background



This preview shows how the Decimal color 11442848 looks on a white background.

Color Contrast Check

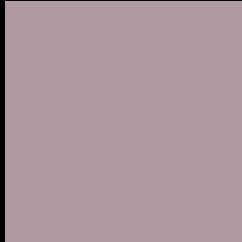
Large Text (above 18pt) WCAG AA × Fail

Any Text WCAG AA × Fail

Large Text (above 18pt) WCAG AAA × Fail

Any Text WCAG AAA × Fail

Black Background



This preview shows how the Decimal color 11442848 looks on a black background.

Color Contrast Check

Large Text (above 18pt) WCAG AA ✓ Pass

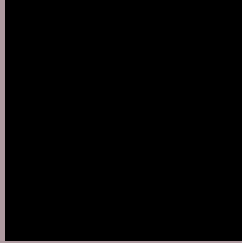
Any Text WCAG AA ✓ Pass

Large Text (above 18pt) WCAG AAA ✓ Pass

Any Text WCAG AAA ✓ Pass

If you want to check with other color combinations, try the [Color Contrast Checker](#).

Decimal 11442848 Background



This preview shows how black text looks on a background with the Decimal color 11442848.



This preview shows how white text looks on a background with the Decimal color 11442848.

Color Blindness Simulation

Color vision deficiency is a very complex topic, and I could not describe the different causes any better than Wikipedia does, so if you want to learn more, you should check out their [article about color blindness](#).


Dichromacy



Original Color
11442848

Protanopia
10591906

Deuteranopia
11442848



Tritanopia
11508133

Trichromacy



Original Color

11442848

Protanomaly

10919329

Deuteranomaly

11442848

Tritanomaly

11508131

Monochromacy



Original Color

11442848

Achromatopsia

10592673

Achromatomaly

10919585

CSS Examples

Text

The CSS property to change the color of the text to Decimal 11442848 is called "color". The color property can be set on classes, ids or directly on the HTML element.

This example shows how text in the color #AE9AA0 looks like.

```
.text, #text, p{  
    color:#AE9AA0  
}
```

If you want to add a text shadow in that color use the text-shadow property, you can generate a text shadow directly with our [CSS Text Shadow Generator](#).

Here you see how black text with a 4 pixel #AE9AA0 colored shadow looks like.

```
.shadow{ text-shadow: 4px 4px 2px #AE9AA0
}
```

Border

The CSS property to change the border of an element to Decimal 11442848 is called "border". The border property can be set on classes, ids or directly on the HTML element.

This example shows the color as border, it can be applied via the CSS property "border" or "border-color".

```
.border, #border, table{ border:4px solid
#AE9AA0 }
```

If only the border color should be changed use the property `border-color`.

```
.border{ border-color:#AE9AA0 }
```

If you want to add a box shadow in that color use:

Here you see how a box with a 4 pixel #AE9AA0 colored shadow looks like.

```
.boxshadow{ -moz-box-shadow:4px 4px 4px  
4px #AE9AA0; -webkit-box-shadow:4px 4px  
4px 4px #AE9AA0; box-shadow:4px 4px 4px  
4px #AE9AA0 }
```

Background

The CSS property to change the background color of an element to Decimal 11442848 is called "background". The background property can be set on classes, ids or directly on the HTML element.

```
.background, #background, body{  
background:#AE9AA0 }
```

If only the background color should be changed can be used:

```
.background{ background-color:#AE9AA0 }
```

This example shows the color as background, it is applied via the CSS property "background".

To optimize and compress your CSS code, you can use our [online CSS compressor and optimizer](#) based on csstidy. If you want to create a linear or radial gradient as background or border, check our [CSS Gradient Generator](#).

Hey! You found this booklet interesting? Support Converting Colors with the new Membership Option!

The pro membership hides all ads, plus gives you double the colors in the color bucket, and more awesome pro features!

[Learn more, Memberships starting at \\$2.50/m!](#)

**Follow me
on Twitter!**

@ConvertingColor