

# Converting Colors

Decimal(11443106)

Have a look what the booklet for  
Decimal(11443106) contains.

<b>Decimal(11443106)</b> .....	3
<i><b>Conversions</b></i> .....	4
<i><b>Details</b></i> .....	6
<i><b>Harmonies</b></i> .....	11
<i><b>Previews</b></i> .....	23
<i><b>Color Blindness Simulation</b></i> .....	26
<i><b>CSS Examples</b></i> .....	29

# **Color**

**Decimal(11443106)**

# Conversions

## Conversions Part 1

Format	Color
Hex	AE9BA2
RGB	174, 155, 162
RGB Percent	68%, 61%, 64%
CMY	0.3176, 0.3922, 0.3647
CMYK	0.00, 0.11, 0.07, 0.32
HSL	338°, 10%, 65%
HSV	338°, 11%, 68%
XYZ	35.6985, 35.0500, 39.0662
YIQ	161.4790, 9.0770, 6.2050

# Conversions

## Conversions Part 2

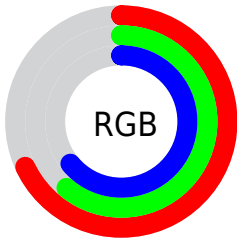
<b>Format</b>	<b>Color</b>
<a href="#">RYB</a>	<a href="#">174, 155, 162</a>
Decimal	<a href="#">11443106</a>
CIELab	<a href="#">65.79, 8.22, -1.10</a>
CIELCh	<a href="#">66, 8.292, 352.354</a>
Yxy	<a href="#">35.0500, 0.3251, 0.3192</a>
Android (android.graphics.Color)	<a href="#">4289633186</a> ( <a href="#">0xFFAE9BA2</a> )
YUV	<a href="#">161.4790, 0.2569, 10.9809</a>
Hunter-Lab	<a href="#">59.2030, 4.0274, 2.3185</a>

# Details

The Decimal color **11443106** is a light color, and the websafe version is hex **999999**. A complement of this color would be **10202791**, and the grayscale version is **10592673**.

A 20% lighter version of the original color is **15127001**, and **8022126** is the 20% darker color. If you saturate the color by 10%, you get **11438743**, and if you desaturate by 10%, it is **11447469**.

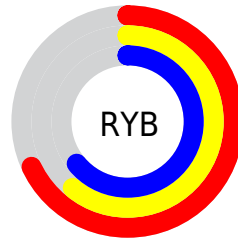
# Distribution



Red (68%)

Green (61%)

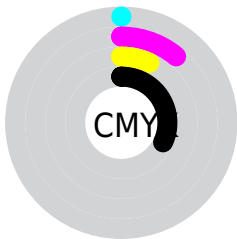
Blue (64%)



Red (68%)

Yellow (61%)

Blue (64%)

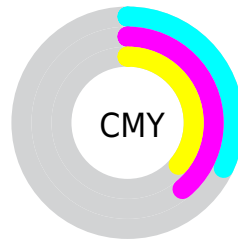


Cyan (0%)

Magenta (11%)

Yellow (7%)

Black (32%)



Cyan (32%)

Magenta (39%)

Yellow (36%)

# Brightness & Saturation Gradients

These gradients show how the Decimal color 11443106 changes by changing the brightness by 10 percent. The first figure shows a shift by +10% for each color and the second figure -10%.

Similar to the brightness gradients but the following saturation gradients show a change of the Decimal color 11443106 by changing the saturation by 10% instead.



 11443106

 11443106

16777215

 9666952

 15127001

 8022126

 16772853

 6377558

 4798783

 3285801

 1904149

 0

 11443106

 11443106

 11438743

 11447469

11434124

11452088

11429761

11456451

11425142

11461070

11420779

11465433

11416416

11468772

11411797

11468783

11407434

11468794

11403328

11468799

# Harmonies

## Analogous

The Analogous color harmony consists of three colors that are next to each other on the color wheel.



11050153



11443106



11574170

# Triad

The Triadic color harmony groups three colors that are evenly spaced from another and form a triangle on the color wheel.



11443106



10527122



9479083

# Complementary

The Complementary color scheme is a pair of colors which are on the opposite of each other on the color wheel.



11443106



10202791

# Split Complementary

Split-complementary colors differ from the complementary color scheme. The scheme consists of three colors, the original color and two neighbors of the complement color.



9348261



11443106



9937815

# Square

The Square scheme is like the rectangle color scheme, but the four colors are evenly spaced on the color wheel.



11443106



11050897



9544862



9871790

# Rectangle

The Rectangle color scheme consists of four colors that form a rectangle on the color wheel.



11443106



11508886



9544862



9348265



# Sweetspot

The Sweet Spot groups the original color and five complimentary colors.



11443106



14933215



10984366



7564912



15921906



7566195



# Same Dimension

The Same Dimension uses a secret algorithm to generate beautiful new colors.



11443106



14927312



11443611



5721681



9830455



1507336



# Inverse Universe

The Inverse Universe completely reimagines the original color for something new.



11443106



14927312



10202286



5721681



9830455

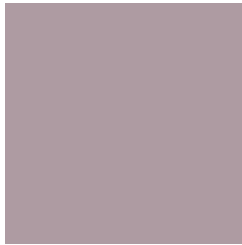


1507336



# Previews

## White Background



This preview shows how the Decimal color 11443106 looks on a white background.

## Color Contrast Check

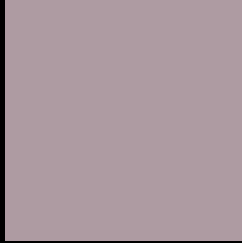
Large Text (above 18pt) WCAG AA × Fail

Any Text WCAG AA × Fail

Large Text (above 18pt) WCAG AAA × Fail

Any Text WCAG AAA × Fail

# Black Background



This preview shows how the Decimal color 11443106 looks on a black background.

## Color Contrast Check

Large Text (above 18pt) WCAG AA ✓ Pass

Any Text WCAG AA ✓ Pass

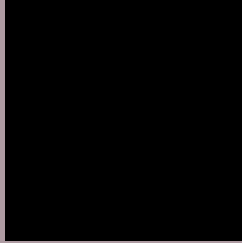
Large Text (above 18pt) WCAG AAA ✓ Pass

Any Text WCAG AAA ✓ Pass

If you want to check with other color combinations, try the [Color Contrast Checker](#).



## Decimal 11443106 Background



This preview shows how black text looks on a background with the Decimal color 11443106.



This preview shows how white text looks on a background with the Decimal color 11443106.

# Color Blindness Simulation

Color vision deficiency is a very complex topic, and I could not describe the different causes any better than Wikipedia does, so if you want to learn more, you should check out their [article about color blindness](#).


## Dichromacy



**Original Color**  
11443106

**Protanopia**  
10592164

**Deuteranopia**  
11443106



**Tritanopia**  
11508390

# Trichromacy



**Original Color**  
11443106

**Protanomaly**  
10919587

**Deuteranomaly**  
11443106

**Tritanomaly**  
11508389

# Monochromacy



**Original Color**  
11443106

**Achromatopsia**  
10592673

**Achromatomaly**  
10919841

# CSS Examples

## Text

The CSS property to change the color of the text to Decimal 11443106 is called "color". The color property can be set on classes, ids or directly on the HTML element.

This example shows how text in the color #AE9BA2 looks like.

```
.text, #text, p{  
  color:#AE9BA2  
}
```

If you want to add a text shadow in that color use the text-shadow property, you can generate a text shadow directly with our [CSS Text Shadow Generator](#).

Here you see how black text with a 4 pixel #AE9BA2 colored shadow looks like.

```
.shadow{ text-shadow: 4px 4px 2px #AE9BA2
}
```

## Border

The CSS property to change the border of an element to Decimal 11443106 is called "border". The border property can be set on classes, ids or directly on the HTML element.

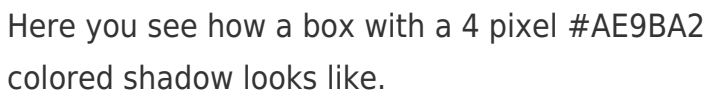
This example shows the color as border, it can be applied via the CSS property "border" or "border-color".

```
.border, #border, table{ border:4px solid
#AE9BA2 }
```

If only the border color should be changed use the property `border-color`.

```
.border{ border-color:#AE9BA2 }
```

If you want to add a box shadow in that color use:



Here you see how a box with a 4 pixel #AE9BA2 colored shadow looks like.

```
.boxshadow{ -moz-box-shadow:4px 4px 4px  
4px #AE9BA2; -webkit-box-shadow:4px 4px  
4px 4px #AE9BA2; box-shadow:4px 4px 4px  
4px #AE9BA2 }
```

# Background

The CSS property to change the background color of an element to Decimal 11443106 is called "background". The background property can be set on classes, ids or directly on the HTML element.

```
.background, #background, body{  
background:#AE9BA2 }
```

If only the background color should be changed can be used:

```
.background{ background-color:#AE9BA2 }
```

This example shows the color as background, it is applied via the CSS property "background".

To optimize and compress your CSS code, you can use our [online CSS compressor and optimizer](#) based on csstidy. If you want to create a linear or radial gradient as background or border, check our [CSS Gradient Generator](#).



Hey! You found this booklet interesting? Support Converting Colors with the new Membership Option!

The pro membership hides all ads, plus gives you double the colors in the color bucket, and more awesome pro features!

**[Learn more, Memberships starting at \\$2.50/m!](#)**

**Follow me  
on Twitter!**

@ConvertingColor