

# Converting Colors

Decimal(11444396)

Have a look what the booklet for  
Decimal(11444396) contains.

|  |    |
|--|----|
| <b>Decimal(11444396)</b> .....                 | 3  |
| <i><b>Conversions</b></i> .....                | 4  |
| <i><b>Details</b></i> .....                    | 6  |
| <i><b>Harmonies</b></i> .....                  | 11 |
| <i><b>Previews</b></i> .....                   | 23 |
| <i><b>Color Blindness Simulation</b></i> ..... | 26 |
| <i><b>CSS Examples</b></i> .....               | 29 |

# **Color**

**Decimal(11444396)**

# Conversions

## Conversions Part 1

| Format      | Color                     |
|-------------|---------------------------|
| Hex         | AEA0AC                    |
| RGB         | 174, 160, 172             |
| RGB Percent | 68%, 63%, 67%             |
| CMY         | 0.3176, 0.3725, 0.3255    |
| CMYK        | 0.00, 0.08, 0.01, 0.32    |
| HSL         | 309°, 8%, 65%             |
| HSV         | 309°, 8%, 68%             |
| XYZ         | 37.4728, 37.1188, 44.2194 |
| YIQ         | 165.5540, 4.4920, 6.7000  |

# Conversions

## Conversions Part 2

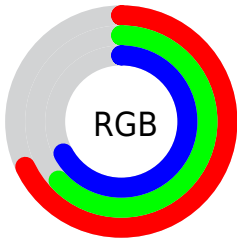
| Format                              | Color  |
|-------------------------------------|--|
| <a href="#">RYB</a>                 | <a href="#">174, 160, 172</a>                                |
| Decimal                             | <a href="#">11444396</a>                                     |
| CIELab                              | <a href="#">67.37, 7.29, -4.37</a>                           |
| CIELCh                              | <a href="#">67, 8.505, 329.050</a>                           |
| Yxy                                 | <a href="#">37.1188, 0.3154, 0.3124</a>                      |
| Android<br>(android.graphics.Color) | <a href="#">4289634476</a><br>( <a href="#">0xFFAEA0AC</a> ) |
| YUV                                 | <a href="#">165.5540, 3.1779, 7.4071</a>                     |
| Hunter-Lab                          | <a href="#">60.9252, 3.1693, -0.3848</a>                     |

# Details

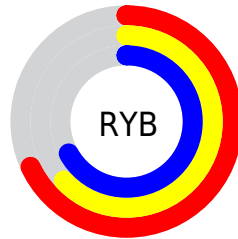
The Decimal color **11444396** is a light color, and the websafe version is hex **999999**. A complement of this color would be **10530466**, and the grayscale version is **10921638**.

A 20% lighter version of the original color is **15063011**, and **8023416** is the 20% darker color. If you saturate the color by 10%, you get **11440042**, and if you desaturate by 10%, it is **11448750**.

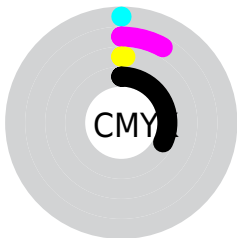
# Distribution



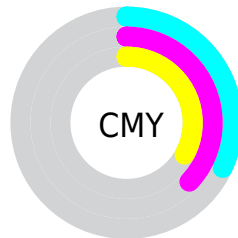
- Red (68%)
- Green (63%)
- Blue (67%)



- Red (68%)
- Yellow (63%)
- Blue (67%)



- Cyan (0%)
- Magenta (8%)
- Yellow (1%)
- Black (32%)



- Cyan (32%)
- Magenta (37%)
- Yellow (33%)

# Brightness & Saturation Gradients

These gradients show how the Decimal color 11444396 changes by changing the brightness by 10 percent. The first figure shows a shift by +10% for each color and the second figure -10%.

Similar to the brightness gradients but the following saturation gradients show a change of the Decimal color 11444396 by changing the saturation by 10% instead.



■ 11444396

■ 11444396

16777215

■ 9668241

■ 15063011

■ 8023416

■ 16774143

■ 6378591

■ 4799815

■ 3286833

■ 1905436

■ 0

■ 11444396

■ 11444396

■ 11440042

■ 11448750

 11435431

 11453361

 11431077

 11457715

 11426466

 11462326

 11422112

 11466680

 11417757

 11468731

 11413147

 11468733

 11408792

 11468736

 11404182

 11468738

# Harmonies

## Analogous

The Analogous color harmony consists of three colors that are next to each other on the color wheel.



10855089



11444396



11837349

# Triad

The Triadic color harmony groups three colors that are evenly spaced from another and form a triangle on the color wheel.



11444396



11248533



9545899

# Complementary

The Complementary color scheme is a pair of colors which are on the opposite of each other on the color wheel.



11444396



10530466

# Split Complementary

Split-complementary colors differ from the complementary color scheme. The scheme consists of three colors, the original color and two neighbors of the complement color.



9677219



11444396



10659479

# Square

The Square scheme is like the rectangle color scheme, but the four colors are evenly spaced on the color wheel.



11444396



11706775



10070172



9742257

# Rectangle

The Rectangle color scheme consists of four colors that form a rectangle on the color wheel.



11444396



11902879



10070172



9546153



# Sweetspot

The Sweet Spot groups the original color and five complimentary colors.



11444396



14933730



10657966



7565426



15921906



7566195



# Same Dimension

The Same Dimension uses a secret algorithm to generate beautiful new colors.



11444396



14929120



11444389



5721685



9830529



1507348



# Inverse Universe

The Inverse Universe completely reimagines the original color for something new.



11444396



14929120



10530473



5721685



9830529

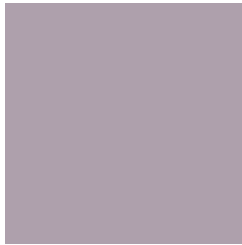


1507348



# Previews

## White Background



This preview shows how the Decimal color 11444396 looks on a white background.

## Color Contrast Check

Large Text (above 18pt) WCAG AA × Fail

Any Text WCAG AA × Fail

Large Text (above 18pt) WCAG AAA × Fail

Any Text WCAG AAA × Fail

# Black Background



This preview shows how the Decimal color 11444396 looks on a black background.

## Color Contrast Check

Large Text (above 18pt) WCAG AA ✓ Pass

Any Text WCAG AA ✓ Pass

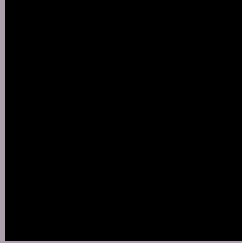
Large Text (above 18pt) WCAG AAA ✓ Pass

Any Text WCAG AAA ✓ Pass

If you want to check with other color combinations, try the [Color Contrast Checker](#).



## Decimal 11444396 Background



This preview shows how black text looks on a background with the Decimal color 11444396.



This preview shows how white text looks on a background with the Decimal color 11444396.

# Color Blindness Simulation

Color vision deficiency is a very complex topic, and I could not describe the different causes any better than Wikipedia does, so if you want to learn more, you should check out their [article about color blindness](#).


## Dichromacy



**Original Color**  
11444396

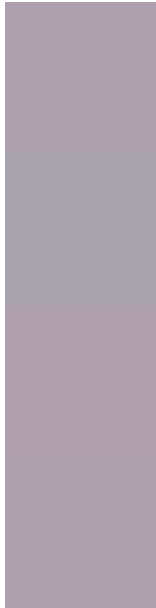
**Protanopia**  
10789806

**Deuteranopia**  
11575212



**Tritanopia**  
11444396

# Trichromacy



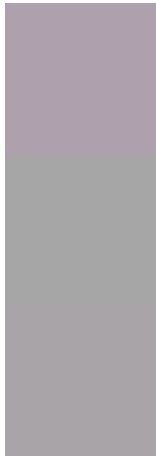
**Original Color**  
11444396

**Protanomaly**  
11051693

**Deuteranomaly**  
11509676

**Tritanomaly**  
11444396

# Monochromacy



**Original Color**  
11444396

**Achromatopsia**  
10921638

**Achromatomaly**  
11117736

# CSS Examples

## Text

The CSS property to change the color of the text to Decimal 11444396 is called "color". The color property can be set on classes, ids or directly on the HTML element.

This example shows how text in the color #AEA0AC looks like.

```
.text, #text, p{  
    color:#AEA0AC  
}
```

If you want to add a text shadow in that color use the text-shadow property, you can generate a text shadow directly with our [CSS Text Shadow Generator](#).

Here you see how black text with a 4 pixel #AEA0AC colored shadow looks like.

```
.shadow{ text-shadow: 4px 4px 2px #AEA0AC
}
```

## Border

The CSS property to change the border of an element to Decimal 11444396 is called "border". The border property can be set on classes, ids or directly on the HTML element.

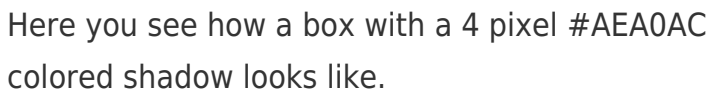
This example shows the color as border, it can be applied via the CSS property "border" or "border-color".

```
.border, #border, table{ border:4px solid
#AEA0AC }
```

If only the border color should be changed use the property `border-color`.

```
.border{ border-color:#AEA0AC }
```

If you want to add a box shadow in that color use:



Here you see how a box with a 4 pixel #AEA0AC colored shadow looks like.

```
.boxshadow{ -moz-box-shadow:4px 4px 4px  
4px #AEA0AC; -webkit-box-shadow:4px 4px  
4px 4px #AEA0AC; box-shadow:4px 4px 4px  
4px #AEA0AC }
```

# Background

The CSS property to change the background color of an element to Decimal 11444396 is called "background". The background property can be set on classes, ids or directly on the HTML element.

```
.background, #background, body{  
background:#AEA0AC }
```

If only the background color should be changed can be used:

```
.background{ background-color:#AEA0AC }
```

This example shows the color as background, it is applied via the CSS property "background".

To optimize and compress your CSS code, you can use our [online CSS compressor and optimizer](#) based on csstidy. If you want to create a linear or radial gradient as background or border, check our [CSS Gradient Generator](#).



Hey! You found this booklet interesting? Support Converting Colors with the new Membership Option!

The pro membership hides all ads, plus gives you double the colors in the color bucket, and more awesome pro features!

**[Learn more, Memberships starting at \\$2.50/m!](#)**

**Follow me  
on Twitter!**

@ConvertingColor