

Converting Colors

Decimal(11500112)

Have a look what the booklet for
Decimal(11500112) contains.

Decimal(11500112)	3
<i>Conversions</i>	4
<i>Details</i>	6
<i>Harmonies</i>	11
<i>Previews</i>	23
<i>Color Blindness Simulation</i>	26
<i>CSS Examples</i>	29

Color

Decimal(11500112)

Conversions

Conversions Part 1

Format	Color
Hex	AF7A50
RGB	175, 122, 80
RGB Percent	69%, 48%, 31%
CMY	0.3137, 0.5216, 0.6863
CMYK	0.00, 0.30, 0.54, 0.31
HSL	27°, 37%, 50%
HSV	27°, 54%, 69%
XYZ	26.0867, 23.6122, 10.7721
YIQ	133.0590, 45.0700, -1.8260

Conversions

Conversions Part 2

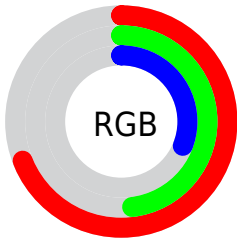
Format	Color
RYB	175, 155, 80
Decimal	11500112
CIELab	55.70, 15.89, 31.12
CIElCh	56, 34.940, 62.941
Yxy	23.6122, 0.4314, 0.3905
Android (android.graphics.Color)	4289690192 (0xFFAF7A50)
YUV	133.0590, -26.1581, 36.7823
Hunter-Lab	48.5924, 10.7905, 20.8711

Details

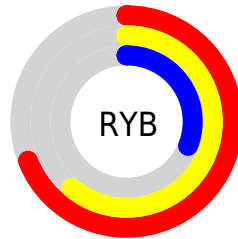
The Decimal color **11500112** is a dark color, and the websafe version is hex **996633**. A complement of this color would be **5277103**, and the grayscale version is **8750469**.

A 20% lighter version of the original color is **15314818**, and **7817506** is the 20% darker color. If you saturate the color by 10%, you get **11497535**, and if you desaturate by 10%, it is **11502690**.

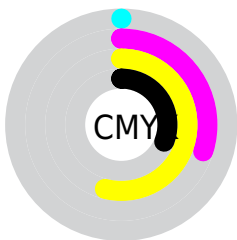
Distribution



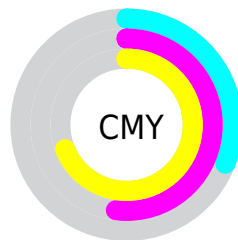
- Red (69%)
- Green (48%)
- Blue (31%)



- Red (69%)
- Yellow (61%)
- Blue (31%)



- Cyan (0%)
- Magenta (30%)
- Yellow (54%)
- Black (31%)



- Cyan (31%)
- Magenta (52%)
- Yellow (69%)

Brightness & Saturation Gradients

These gradients show how the Decimal color 11500112 changes by changing the brightness by 10 percent. The first figure shows a shift by +10% for each color and the second figure -10%.

Similar to the brightness gradients but the following saturation gradients show a change of the Decimal color 11500112 by changing the saturation by 10% instead.

 11500112  11500112


16777215  9658680

 15314818  7817506

 16763548  6107659

 16770743  4398336

 16777171  2688768

 16777200  0

 11500112  11500112

 11497535  11502690

 11494957  11505267

■ 11492636

■ 11507589

■ 11490058

■ 11510166

■ 11488512

■ 11512744

■ 11515321

■ 11517643

■ 11520220

■ 11522798

Harmonies

Analogous

The Analogous color harmony consists of three colors that are next to each other on the color wheel.



12480870



11500112



9864520

Triad

The Triadic color harmony groups three colors that are evenly spaced from another and form a triangle on the color wheel.



11500112



1807752



9206968

Complementary

The Complementary color scheme is a pair of colors which are on the opposite of each other on the color wheel.



11500112



5277103

Split Complementary

Split-complementary colors differ from the complementary color scheme. The scheme consists of three colors, the original color and two neighbors of the complement color.



6064066



11500112



38053

Square

The Square scheme is like the rectangle color scheme, but the four colors are evenly spaced on the color wheel.



11500112



5280617



1282235



11432610

Rectangle

The Rectangle color scheme consists of four colors that form a rectangle on the color wheel.



11500112



8489804



1282235



8290493

Sweetspot

The Sweet Spot groups the original color and five complimentary colors.



11500112



14929855



11489414



7563101



15921906



7566195

Same Dimension

The Same Dimension uses a secret algorithm to generate beautiful new colors.



11500112



14913871



11512144



5722702



9847552



1509888

Inverse Universe

The Inverse Universe completely reimagines the original color for something new.



5277103



5219043



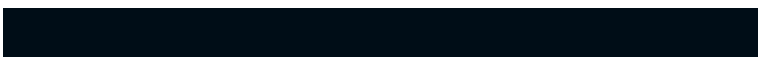
5265071



5133143



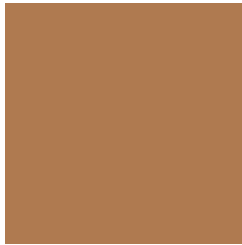
21654



3351

Previews

White Background



This preview shows how the Decimal color 11500112 looks on a white background.

Color Contrast Check

Large Text (above 18pt) WCAG AA ✓ Pass

Any Text WCAG AA × Fail

Large Text (above 18pt) WCAG AAA × Fail

Any Text WCAG AAA × Fail

Black Background



This preview shows how the Decimal color 11500112 looks on a black background.

Color Contrast Check

Large Text (above 18pt) WCAG AA ✓ Pass

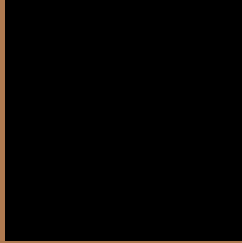
Any Text WCAG AA ✓ Pass

Large Text (above 18pt) WCAG AAA ✓ Pass

Any Text WCAG AAA × Fail

If you want to check with other color combinations, try the [Color Contrast Checker](#).

Decimal 11500112 Background



This preview shows how black text looks on a background with the Decimal color 11500112.



This preview shows how white text looks on a background with the Decimal color 11500112.

Color Blindness Simulation

Color vision deficiency is a very complex topic, and I could not describe the different causes any better than Wikipedia does, so if you want to learn more, you should check out their [article about color blindness](#).

Dichromacy



Original Color
11500112

Protanopia
9602644

Deuteranopia
10715215



Tritanopia
11760765

Trichromacy



Original Color
11500112

Protanomaly
10322515

Deuteranomaly
10976847

Tritanomaly
11695725

Monochromacy



Original Color
11500112

Achromatopsia
8750469

Achromatomaly
9732466

CSS Examples

Text

The CSS property to change the color of the text to Decimal 11500112 is called "color". The color property can be set on classes, ids or directly on the HTML element.

This example shows how text in the color #AF7A50 looks like.

```
.text, #text, p{  
  color:#AF7A50  
}
```

If you want to add a text shadow in that color use the text-shadow property, you can generate a text shadow directly with our [CSS Text Shadow Generator](#).

Here you see how black text with a 4 pixel #AF7A50 colored shadow looks like.

```
.shadow{ text-shadow: 4px 4px 2px #AF7A50
}
```

Border

The CSS property to change the border of an element to Decimal 11500112 is called "border". The border property can be set on classes, ids or directly on the HTML element.

This example shows the color as border, it can be applied via the CSS property "border" or "border-color".

```
.border, #border, table{ border:4px solid
#AF7A50 }
```

If only the border color should be changed use the property `border-color`.

```
.border{ border-color:#AF7A50 }
```

If you want to add a box shadow in that color use:

Here you see how a box with a 4 pixel #AF7A50 colored shadow looks like.

```
.boxshadow{ -moz-box-shadow:4px 4px 4px  
4px #AF7A50; -webkit-box-shadow:4px 4px  
4px 4px #AF7A50; box-shadow:4px 4px 4px  
4px #AF7A50 }
```

Background

The CSS property to change the background color of an element to Decimal 11500112 is called "background". The background property can be set on classes, ids or directly on the HTML element.

```
.background, #background, body{  
background:#AF7A50 }
```

If only the background color should be changed can be used:

```
.background{ background-color:#AF7A50 }
```

This example shows the color as background, it is applied via the CSS property "background".

To optimize and compress your CSS code, you can use our [online CSS compressor and optimizer](#) based on csstidy. If you want to create a linear or radial gradient as background or border, check our [CSS Gradient Generator](#).

Hey! You found this booklet interesting? Support Converting Colors with the new Membership Option!

The pro membership hides all ads, plus gives you double the colors in the color bucket, and more awesome pro features!

[Learn more, Memberships starting at \\$2.50/m!](#)

**Follow me
on Twitter!**

@ConvertingColor