

Converting Colors

Decimal(11501430)

Have a look what the booklet for
Decimal(11501430) contains.

Decimal(11501430)	3
<i>Conversions</i>	4
<i>Details</i>	6
<i>Harmonies</i>	11
<i>Previews</i>	23
<i>Color Blindness Simulation</i>	26
<i>CSS Examples</i>	29

Color

Decimal(11501430)

Conversions

Conversions Part 1

Format	Color
Hex	AF7F76
RGB	175, 127, 118
RGB Percent	69%, 50%, 46%
CMY	0.3137, 0.5020, 0.5373
CMYK	0.00, 0.27, 0.33, 0.31
HSL	9°, 26%, 57%
HSV	9°, 33%, 69%
XYZ	28.5386, 25.6007, 20.5768
YIQ	140.3260, 31.4970, 7.3770

Conversions

Conversions Part 2

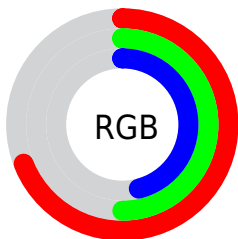
Format	Color
R_{YB}	175, 129, 118
Decimal	11501430
CIE Lab	57.66, 17.33, 12.22
CIE LCh	58, 21.205, 35.193
Yxy	25.6007, 0.3820, 0.3426
Android (android.graphics.Color)	4289691510 (0xFFAF7F76)
YUV	140.3260, -11.0067, 30.4091
Hunter-Lab	50.5971, 12.1353, 11.3060

Details

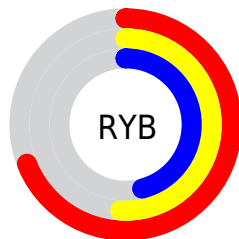
The Decimal color **11501430** is a dark color, and the websafe version is hex **996666**. A complement of this color would be **7775919**, and the grayscale version is **9211020**.

A 20% lighter version of the original color is **15250602**, and **7949894** is the 20% darker color. If you saturate the color by 10%, you get **11497573**, and if you desaturate by 10%, it is **11505288**.

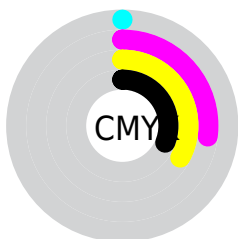
Distribution



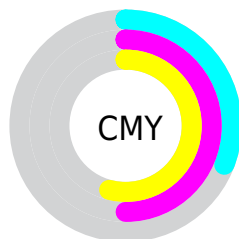
- Red (69%)
- Green (50%)
- Blue (46%)



- Red (69%)
- Yellow (51%)
- Blue (46%)



- Cyan (0%)
- Magenta (27%)
- Yellow (33%)
- Black (31%)



- Cyan (31%)
- Magenta (50%)
- Yellow (54%)

Brightness & Saturation Gradients

These gradients show how the Decimal color 11501430 changes by changing the brightness by 10 percent. The first figure shows a shift by +10% for each color and the second figure -10%.

Similar to the brightness gradients but the following saturation gradients show a change of the Decimal color 11501430 by changing the saturation by 10% instead.

 11501430

 11501430

16777215

 9725533

 15250602

 7949894

 16765125


 6239791

 16772321

 4595739

16777214

 3083008

 1114112

 0

 11501430

 11501430

 11497573

 11505288

11493971

11508889

11490114

11512747

11486256

11516604

11482398

11520462

11478797

11524063

11475968

11527921

11531775

11534335

Harmonies

Analogous

The Analogous color harmony consists of three colors that are next to each other on the color wheel.



11500936



11501430



10847337

Triad

The Triadic color harmony groups three colors that are evenly spaced from another and form a triangle on the color wheel.



11501430



7050362



7900079

Complementary

The Complementary color scheme is a pair of colors which are on the opposite of each other on the color wheel.



11501430



7775919

Split Complementary

Split-complementary colors differ from the complementary color scheme. The scheme consists of three colors, the original color and two neighbors of the complement color.



6394284



11501430



5936525

Square

The Square scheme is like the rectangle color scheme, but the four colors are evenly spaced on the color wheel.



11501430



8491116



5543071



9602473

Rectangle

The Rectangle color scheme consists of four colors that form a rectangle on the color wheel.



11501430



10192998



5543071



7376303

Sweetspot

The Sweet Spot groups the original color and five complimentary colors.



11501430



14930124



11499174



7563109



15921906



7566195

Same Dimension

The Same Dimension uses a secret algorithm to generate beautiful new colors.



11501430



14915722



11508598



5721934



9836544



1508352

Inverse Universe

The Inverse Universe completely reimagines the original color for something new.



7775919



9098723



7768751



5133655



32662



4887

Previews

White Background



This preview shows how the Decimal color 11501430 looks on a white background.

Color Contrast Check

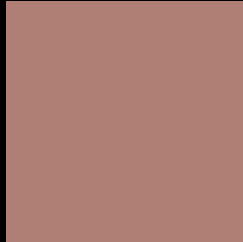
Large Text (above 18pt) WCAG AA ✓ Pass

Any Text WCAG AA × Fail

Large Text (above 18pt) WCAG AAA × Fail

Any Text WCAG AAA × Fail

Black Background



This preview shows how the Decimal color 11501430 looks on a black background.

Color Contrast Check

Large Text (above 18pt) WCAG AA ✓ Pass

Any Text WCAG AA ✓ Pass

Large Text (above 18pt) WCAG AAA ✓ Pass

Any Text WCAG AAA × Fail

If you want to check with other color combinations, try the [Color Contrast Checker](#).

Decimal 11501430 Background



This preview shows how black text looks on a background with the Decimal color 11501430.



This preview shows how white text looks on a background with the Decimal color 11501430.

Color Blindness Simulation

Color vision deficiency is a very complex topic, and I could not describe the different causes any better than Wikipedia does, so if you want to learn more, you should check out their [article about color blindness](#).


Dichromacy



Original Color
11501430

Protanopia
9538172

Deuteranopia
10520181



Tritanopia
11632006

Trichromacy



Original Color
11501430

Protanomaly
10258042

Deuteranomaly
10847093

Tritanomaly
11566720

Monochromacy



Original Color
11501430

Achromatopsia
9211020

Achromatomaly
10061700

CSS Examples

Text

The CSS property to change the color of the text to Decimal 11501430 is called "color". The color property can be set on classes, ids or directly on the HTML element.

This example shows how text in the color #AF7F76 looks like.

```
.text, #text, p{  
  color:#AF7F76  
}
```

If you want to add a text shadow in that color use the text-shadow property, you can generate a text shadow directly with our [CSS Text Shadow Generator](#).

Here you see how black text with a 4 pixel #AF7F76 colored shadow looks like.

```
.shadow{ text-shadow: 4px 4px 2px #AF7F76  
}
```

Border

The CSS property to change the border of an element to Decimal 11501430 is called "border". The border property can be set on classes, ids or directly on the HTML element.

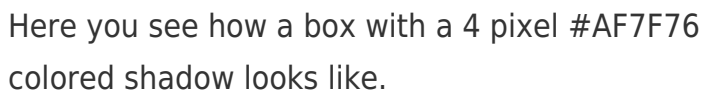
This example shows the color as border, it can be applied via the CSS property "border" or "border-color".

```
.border, #border, table{ border:4px solid  
#AF7F76 }
```

If only the border color should be changed use the property `border-color`.

```
.border{ border-color:#AF7F76 }
```

If you want to add a box shadow in that color use:



Here you see how a box with a 4 pixel #AF7F76 colored shadow looks like.

```
.boxshadow{ -moz-box-shadow:4px 4px 4px  
4px #AF7F76; -webkit-box-shadow:4px 4px  
4px 4px #AF7F76; box-shadow:4px 4px 4px  
4px #AF7F76 }
```

Background

The CSS property to change the background color of an element to Decimal 11501430 is called "background". The background property can be set on classes, ids or directly on the HTML element.

```
.background, #background, body{  
background:#AF7F76 }
```

If only the background color should be changed can be used:

```
.background{ background-color:#AF7F76 }
```

This example shows the color as background, it is applied via the CSS property "background".

To optimize and compress your CSS code, you can use our [online CSS compressor and optimizer](#) based on csstidy. If you want to create a linear or radial gradient as background or border, check our [CSS Gradient Generator](#).

Hey! You found this booklet interesting? Support Converting Colors with the new Membership Option!

The pro membership hides all ads, plus gives you double the colors in the color bucket, and more awesome pro features!

[Learn more, Memberships starting at \\$2.50/m!](#)

**Follow me
on Twitter!**

@ConvertingColor