

Converting Colors

Decimal(11501457)

Have a look what the booklet for
Decimal(11501457) contains.

Decimal(11501457)	3
<i>Conversions</i>	4
<i>Details</i>	6
<i>Harmonies</i>	11
<i>Previews</i>	23
<i>Color Blindness Simulation</i>	26
<i>CSS Examples</i>	29

Color

Decimal(11501457)

Conversions

Conversions Part 1

Format	Color
Hex	AF7F91
RGB	175, 127, 145
RGB Percent	69%, 50%, 57%
CMY	0.3137, 0.5020, 0.4314
CMYK	0.00, 0.27, 0.17, 0.31
HSL	338°, 23%, 59%
HSV	338°, 27%, 69%
XYZ	30.3794, 26.3370, 30.2705
YIQ	143.4040, 22.8300, 15.7740

Conversions

Conversions Part 2

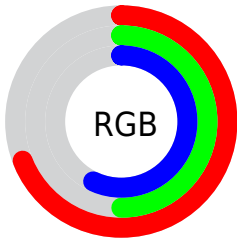
Format	Color
R_{YB}	175, 127, 145
Decimal	11501457
CIE _{Lab}	58.36, 21.36, -2.33
CIE _{LCh}	58, 21.490, 353.769
Yxy	26.3370, 0.3492, 0.3028
Android (android.graphics.Color)	4289691537 (0xFFAF7F91)
YUV	143.4040, 0.7868, 27.7097
Hunter-Lab	51.3196, 15.8563, 0.9520

Details

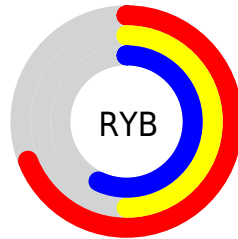
The Decimal color **11501457** is a dark color, and the websafe version is hex **CC9999**. A complement of this color would be **8368029**, and the grayscale version is **9408399**.

A 20% lighter version of the original color is **15185095**, and **8015199** is the 20% darker color. If you saturate the color by 10%, you get **11497094**, and if you desaturate by 10%, it is **11506076**.

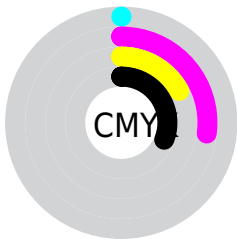
Distribution



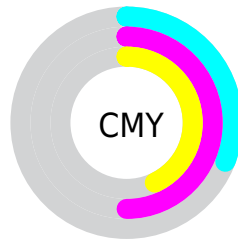
- Red (69%)
- Green (50%)
- Blue (57%)



- Red (69%)
- Yellow (50%)
- Blue (57%)



- Cyan (0%)
- Magenta (27%)
- Yellow (17%)
- Black (31%)



- Cyan (31%)
- Magenta (50%)
- Yellow (43%)

Brightness & Saturation Gradients

These gradients show how the Decimal color 11501457 changes by changing the brightness by 10 percent. The first figure shows a shift by +10% for each color and the second figure -10%.

Similar to the brightness gradients but the following saturation gradients show a change of the Decimal color 11501457 by changing the saturation by 10% instead.



11501457



11501457

16777215



9725559



15185095



8015199



16765155



6305351



16772351



4726833



3148316



1835009



0



11501457



11501457




11497094



11506076

 11492475

 11510439

 11488112

 11515058

 11483493

 11519421

 11478874

 11524040

 11474511

 11528403

 11469892

 11533022

 11468866

 11534313

 11534323

Harmonies

Analogous

The Analogous color harmony consists of three colors that are next to each other on the color wheel.



10584995



11501457



11763582

Triad

The Triadic color harmony groups three colors that are evenly spaced from another and form a triangle on the color wheel.



11501457



9080938



6001834

Complementary

The Complementary color scheme is a pair of colors which are on the opposite of each other on the color wheel.



11501457



8368029

Split Complementary

Split-complementary colors differ from the complementary color scheme. The scheme consists of three colors, the original color and two neighbors of the complement color.



5674907



11501457



7705718

Square

The Square scheme is like the rectangle color scheme, but the four colors are evenly spaced on the color wheel.



11501457



10390119



6395784



7376817

Rectangle

The Rectangle color scheme consists of four colors that form a rectangle on the color wheel.



11501457



11502195



6395784



5739942

Sweetspot

The Sweet Spot groups the original color and five complimentary colors.



11501457



14930392



10321839



7563116



15921906



7566195

Same Dimension

The Same Dimension uses a secret algorithm to generate beautiful new colors.



11501457



14915764



11502975



5721681



9830456



1507337

Inverse Universe

The Inverse Universe completely reimagines the original color for something new.



11501457



14915764



8366511



5721681



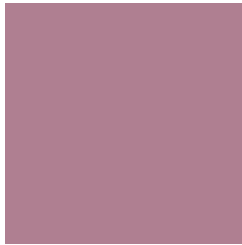
9830456



1507337

Previews

White Background



This preview shows how the Decimal color 11501457 looks on a white background.

Color Contrast Check

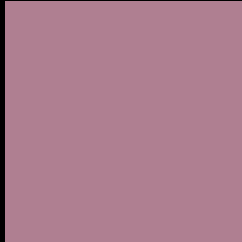
Large Text (above 18pt) WCAG AA ✓ Pass

Any Text WCAG AA × Fail

Large Text (above 18pt) WCAG AAA × Fail

Any Text WCAG AAA × Fail

Black Background



This preview shows how the Decimal color 11501457 looks on a black background.

Color Contrast Check

Large Text (above 18pt) WCAG AA ✓ Pass

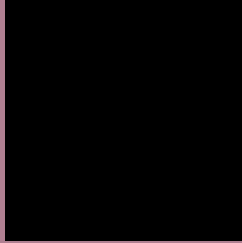
Any Text WCAG AA ✓ Pass

Large Text (above 18pt) WCAG AAA ✓ Pass

Any Text WCAG AAA × Fail

If you want to check with other color combinations, try the [Color Contrast Checker](#).

Decimal 11501457 Background



This preview shows how black text looks on a background with the Decimal color 11501457.




This preview shows how white text looks on a background with the Decimal color 11501457.

Color Blindness Simulation

Color vision deficiency is a very complex topic, and I could not describe the different causes any better than Wikipedia does, so if you want to learn more, you should check out their [article about color blindness](#).

Dichromacy





Tritanopia
11436170

Trichromacy



Original Color
11501457

Protanomaly
10061718

Deuteranomaly
10585488

Tritanomaly
11436173

Monochromacy



Original Color
11501457

Achromatopsia
9408399

Achromatomaly
10193296

CSS Examples

Text

The CSS property to change the color of the text to Decimal 11501457 is called "color". The color property can be set on classes, ids or directly on the HTML element.

This example shows how text in the color #AF7F91 looks like.

```
.text, #text, p{  
  color:#AF7F91  
}
```

If you want to add a text shadow in that color use the text-shadow property, you can generate a text shadow directly with our [CSS Text Shadow Generator](#).

Here you see how black text with a 4 pixel #AF7F91 colored shadow looks like.

```
.shadow{ text-shadow: 4px 4px 2px #AF7F91
}
```

Border

The CSS property to change the border of an element to Decimal 11501457 is called "border". The border property can be set on classes, ids or directly on the HTML element.

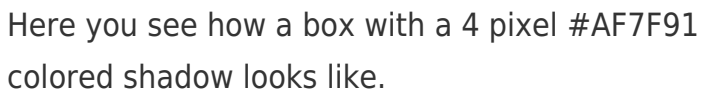
This example shows the color as border, it can be applied via the CSS property "border" or "border-color".

```
.border, #border, table{ border:4px solid
#AF7F91 }
```

If only the border color should be changed use the property `border-color`.

```
.border{ border-color:#AF7F91 }
```

If you want to add a box shadow in that color use:



Here you see how a box with a 4 pixel `#AF7F91` colored shadow looks like.

```
.boxshadow{ -moz-box-shadow:4px 4px 4px  
4px #AF7F91; -webkit-box-shadow:4px 4px  
4px 4px #AF7F91; box-shadow:4px 4px 4px  
4px #AF7F91 }
```

Background

The CSS property to change the background color of an element to Decimal 11501457 is called "background". The background property can be set on classes, ids or directly on the HTML element.

```
.background, #background, body{  
background:#AF7F91 }
```

If only the background color should be changed can be used:

```
.background{ background-color:#AF7F91 }
```

This example shows the color as background, it is applied via the CSS property "background".

To optimize and compress your CSS code, you can use our [online CSS compressor and optimizer](#) based on csstidy. If you want to create a linear or radial gradient as background or border, check our [CSS Gradient Generator](#).

Hey! You found this booklet interesting? Support Converting Colors with the new Membership Option!

The pro membership hides all ads, plus gives you double the colors in the color bucket, and more awesome pro features!

[Learn more, Memberships starting at \\$2.50/m!](#)

**Follow me
on Twitter!**

@ConvertingColor