

Converting Colors

Decimal(11504009)

Have a look what the booklet for
Decimal(11504009) contains.

Decimal(11504009)	3
<i>Conversions</i>	4
<i>Details</i>	6
<i>Harmonies</i>	11
<i>Previews</i>	23
<i>Color Blindness Simulation</i>	26
<i>CSS Examples</i>	29

Color

Decimal(11504009)

Conversions

Conversions Part 1

Format	Color
Hex	AF8989
RGB	175, 137, 137
RGB Percent	69%, 54%, 54%
CMY	0.3137, 0.4627, 0.4627
CMYK	0.00, 0.22, 0.22, 0.31
HSL	0°, 19%, 61%
HSV	0°, 22%, 69%
XYZ	31.1402, 28.8114, 27.5868
YIQ	148.3620, 22.6480, 8.0560

Conversions

Conversions Part 2

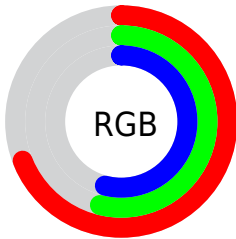
Format	Color
R_{YB}	175, 137, 137
Decimal	11504009
CIE _{Lab}	60.61, 14.46, 5.54
CIE _{LCh}	61, 15.481, 20.970
Yxy	28.8114, 0.3557, 0.3291
Android (android.graphics.Color)	4289694089 (0xFFAF8989)
YUV	148.3620, -5.6015, 23.3615
Hunter-Lab	53.6763, 9.6230, 7.1014

Details

The Decimal color **11504009** is a dark color, and the websafe version is hex **CC9999**. A complement of this color would be **9023407**, and the grayscale version is **9737364**.

A 20% lighter version of the original color is **15187646**, and **8017751** is the 20% darker color. If you saturate the color by 10%, you get **11499640**, and if you desaturate by 10%, it is **11508635**.

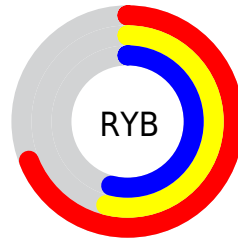
Distribution



Red (69%)

Green (54%)

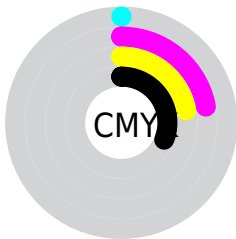
Blue (54%)



Red (69%)

Yellow (54%)

Blue (54%)

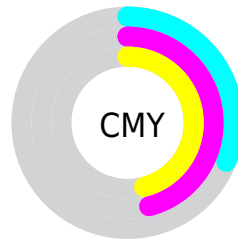


Cyan (0%)

Magenta (22%)

Yellow (22%)

Black (31%)



Cyan (31%)

Magenta (46%)

Yellow (46%)

Brightness & Saturation Gradients

These gradients show how the Decimal color 11504009 changes by changing the brightness by 10 percent. The first figure shows a shift by +10% for each color and the second figure -10%.

Similar to the brightness gradients but the following saturation gradients show a change of the Decimal color 11504009 by changing the saturation by 10% instead.

 11504009

 11504009

16777215

 9728112

 15187646

 8017751

 16767706

 6307648

 16775159

 4729130

 3150870

 1900544

 0

 11504009

 11504009

 11499640

 11508635

 11495014

 11513004

 11490645

 11517373


 11486019

 11521999

 11481393

 11526625

 11477024

 11530994

 11472398

 11534335

 11468800

Harmonies

Analogous

The Analogous color harmony consists of three colors that are next to each other on the color wheel.



11241879



11504009



11242622

Triad

The Triadic color harmony groups three colors that are evenly spaced from another and form a triangle on the color wheel.



11504009



8624257



8295853

Complementary

The Complementary color scheme is a pair of colors which are on the opposite of each other on the color wheel.



11504009



9023407

Split Complementary

Split-complementary colors differ from the complementary color scheme. The scheme consists of three colors, the original color and two neighbors of the complement color.



7444647



11504009



7707277

Square

The Square scheme is like the rectangle color scheme, but the four colors are evenly spaced on the color wheel.



11504009



9671801



7248539



9408684

Rectangle

The Rectangle color scheme consists of four colors that form a rectangle on the color wheel.



11504009



10849913



7248539



7968428

Sweetspot

The Sweet Spot groups the original color and five complimentary colors.



11504009



14930899



11504047



7563882



15921906



7566195

Same Dimension

The Same Dimension uses a secret algorithm to generate beautiful new colors.



11504009



14919848



11508873



5721678



9830400



1507328

Inverse Universe

The Inverse Universe completely reimagines the original color for something new.



9023407



11068387



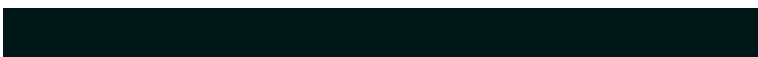
9018543



5134167



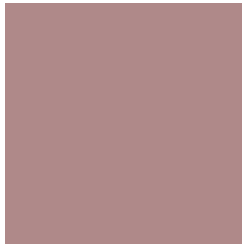
38550



5911

Previews

White Background



This preview shows how the Decimal color 11504009 looks on a white background.

Color Contrast Check

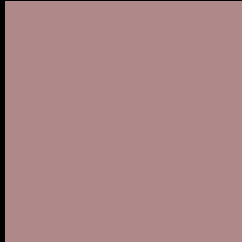
Large Text (above 18pt) WCAG AA ✓ Pass

Any Text WCAG AA ✗ Fail

Large Text (above 18pt) WCAG AAA ✗ Fail

Any Text WCAG AAA ✗ Fail

Black Background



This preview shows how the Decimal color 11504009 looks on a black background.

Color Contrast Check

Large Text (above 18pt) WCAG AA ✓ Pass

Any Text WCAG AA ✓ Pass

Large Text (above 18pt) WCAG AAA ✓ Pass

Any Text WCAG AAA × Fail

If you want to check with other color combinations, try the [Color Contrast Checker](#).

Decimal 11504009 Background



This preview shows how black text looks on a background with the Decimal color 11504009.




This preview shows how white text looks on a background with the Decimal color 11504009.

Color Blindness Simulation

Color vision deficiency is a very complex topic, and I could not describe the different causes any better than Wikipedia does, so if you want to learn more, you should check out their [article about color blindness](#).

Dichromacy





Tritanopia
11569298

Trichromacy



Original Color
11504009

Protanomaly
10456972

Deuteranomaly
11046024

Tritanomaly
11569295

Monochromacy



Original Color
11504009

Achromatopsia
9737364

Achromatomaly
10391696

CSS Examples

Text

The CSS property to change the color of the text to Decimal 11504009 is called "color". The color property can be set on classes, ids or directly on the HTML element.

This example shows how text in the color #AF8989 looks like.

```
.text, #text, p{  
    color:#AF8989  
}
```

If you want to add a text shadow in that color use the text-shadow property, you can generate a text shadow directly with our [CSS Text Shadow Generator](#).

Here you see how black text with a 4 pixel #AF8989 colored shadow looks like.

```
.shadow{ text-shadow: 4px 4px 2px #AF8989
}
```

Border

The CSS property to change the border of an element to Decimal 11504009 is called "border". The border property can be set on classes, ids or directly on the HTML element.

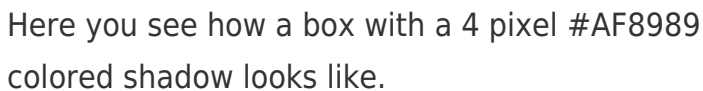
This example shows the color as border, it can be applied via the CSS property "border" or "border-color".

```
.border, #border, table{ border:4px solid
#AF8989 }
```

If only the border color should be changed use the property `border-color`.

```
.border{ border-color:#AF8989 }
```

If you want to add a box shadow in that color use:



Here you see how a box with a 4 pixel #AF8989 colored shadow looks like.

```
.boxshadow{ -moz-box-shadow:4px 4px 4px  
4px #AF8989; -webkit-box-shadow:4px 4px  
4px 4px #AF8989; box-shadow:4px 4px 4px  
4px #AF8989 }
```

Background

The CSS property to change the background color of an element to Decimal 11504009 is called "background". The background property can be set on classes, ids or directly on the HTML element.

```
.background, #background, body{  
background:#AF8989 }
```

If only the background color should be changed can be used:

```
.background{ background-color:#AF8989 }
```

This example shows the color as background, it is applied via the CSS property "background".

To optimize and compress your CSS code, you can use our [online CSS compressor and optimizer](#) based on csstidy. If you want to create a linear or radial gradient as background or border, check our [CSS Gradient Generator](#).

Hey! You found this booklet interesting? Support Converting Colors with the new Membership Option!

The pro membership hides all ads, plus gives you double the colors in the color bucket, and more awesome pro features!

[Learn more, Memberships starting at \\$2.50/m!](#)

**Follow me
on Twitter!**

@ConvertingColor