

# Converting Colors

Decimal(11504273)

Have a look what the booklet for  
Decimal(11504273) contains.

<b>Decimal(11504273)</b> .....	3
<i><b>Conversions</b></i> .....	4
<i><b>Details</b></i> .....	6
<i><b>Harmonies</b></i> .....	11
<i><b>Previews</b></i> .....	23
<i><b>Color Blindness Simulation</b></i> .....	26
<i><b>CSS Examples</b></i> .....	29

# **Color**

**Decimal(11504273)**

# Conversions

## Conversions Part 1

<b>Format</b>	<b>Color</b>
Hex	AF8A91
RGB	175, 138, 145
RGB Percent	69%, 54%, 57%
CMY	0.3137, 0.4588, 0.4314
CMYK	0.00, 0.21, 0.17, 0.31
HSL	349°, 19%, 61%
HSV	349°, 21%, 69%
XYZ	31.8785, 29.3353, 30.7702
YIQ	149.8610, 19.8050, 10.0210

# Conversions

## Conversions Part 2

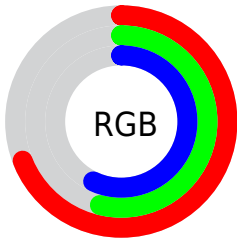
<b>Format</b>	<b>Color</b>
<b>RYB</b>	175, 138, 145
Decimal	11504273
CIELab	61.08, 15.17, 1.64
CIELCh	61, 15.258, 6.186
Yxy	29.3353, 0.3466, 0.3189
Android (android.graphics.Color)	4289694353 (0xFFAF8A91)
YUV	149.8610, -2.3965, 22.0469
Hunter-Lab	54.1620, 10.2774, 4.2300

# Details

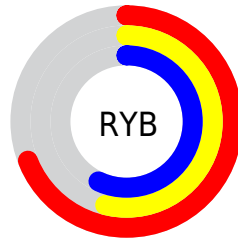
The Decimal color **11504273** is a light color, and the websafe version is hex **CC9999**. A complement of this color would be **9088936**, and the grayscale version is **9868950**.

A 20% lighter version of the original color is **15188167**, and **8018015** is the 20% darker color. If you saturate the color by 10%, you get **11499651**, and if you desaturate by 10%, it is **11508895**.

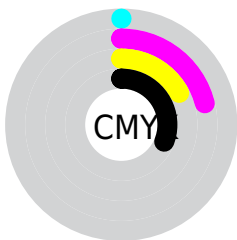
# Distribution



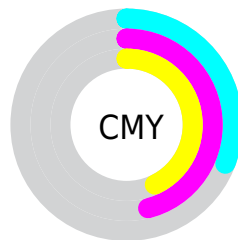
- Red (69%)
- Green (54%)
- Blue (57%)



- Red (69%)
- Yellow (54%)
- Blue (57%)



- Cyan (0%)
- Magenta (21%)
- Yellow (17%)
- Black (31%)



- Cyan (31%)
- Magenta (46%)
- Yellow (43%)

# Brightness & Saturation Gradients

These gradients show how the Decimal color 11504273 changes by changing the brightness by 10 percent. The first figure shows a shift by +10% for each color and the second figure -10%.

Similar to the brightness gradients but the following saturation gradients show a change of the Decimal color 11504273 by changing the saturation by 10% instead.



 11504273

 11504273

16777215

 9728119

 15188167

 8018015

 16767971

 6373447

 16775423

 4729393

 3216668

 2031617

 0

 11504273

 11504273

 11499651

 11508895

 11495285

 11513261

 11490662

 11517884

 11486296

 11522250

 11481674

 11526872

 11477308

 11531238

 11472686

 11534324

 11468833

 11534335

# Harmonies

## Analogous

The Analogous color harmony consists of three colors that are next to each other on the color wheel.



10980255



11504273



11504516

# Triad

The Triadic color harmony groups three colors that are evenly spaced from another and form a triangle on the color wheel.



11504273



9213821



7903404

# Complementary

The Complementary color scheme is a pair of colors which are on the opposite of each other on the color wheel.



11504273



9088936

# Split Complementary

Split-complementary colors differ from the complementary color scheme. The scheme consists of three colors, the original color and two neighbors of the complement color.



7379619



11504273



8231560

# Square

The Square scheme is like the rectangle color scheme, but the four colors are evenly spaced on the color wheel.



11504273



10195833



7510934



8950958

# Rectangle

The Rectangle color scheme consists of four colors that form a rectangle on the color wheel.



11504273



11243133



7510934



7641513



# Sweetspot

The Sweet Spot groups the original color and five complimentary colors.



11504273



14931416



11045551



7564140



15921906



7566195



# Same Dimension

The Same Dimension uses a secret algorithm to generate beautiful new colors.



11504273



14920373



11507082



5721680



9830428



1507332



# Inverse Universe

The Inverse Universe completely reimagines the original color for something new.



11504273



14920373



9086127



5721680



9830428

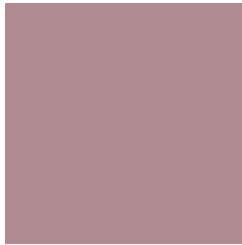


1507332



# Previews

## White Background



This preview shows how the Decimal color 11504273 looks on a white background.

## Color Contrast Check

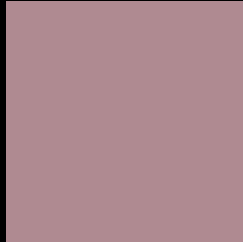
Large Text (above 18pt) WCAG AA ✓ Pass

Any Text WCAG AA × Fail

Large Text (above 18pt) WCAG AAA × Fail

Any Text WCAG AAA × Fail

# Black Background



This preview shows how the Decimal color 11504273 looks on a black background.

## Color Contrast Check

Large Text (above 18pt) WCAG AA ✓ Pass

Any Text WCAG AA ✓ Pass

Large Text (above 18pt) WCAG AAA ✓ Pass

Any Text WCAG AAA × Fail

If you want to check with other color combinations, try the [Color Contrast Checker](#).



## Decimal 11504273 Background



This preview shows how black text looks on a background with the Decimal color 11504273.



This preview shows how white text looks on a background with the Decimal color 11504273.

# Color Blindness Simulation

Color vision deficiency is a very complex topic, and I could not describe the different causes any better than Wikipedia does, so if you want to learn more, you should check out their [article about color blindness](#).

## Dichromacy





**Tritanopia**  
11504020

# Trichromacy



**Original Color**  
11504273

**Protanomaly**  
10391700

**Deuteranomaly**  
10980752

**Tritanomaly**  
11504019

# Monochromacy



**Original Color**  
11504273

**Achromatopsia**  
9868950

**Achromatomaly**  
10457748

# CSS Examples

## Text

The CSS property to change the color of the text to Decimal 11504273 is called "color". The color property can be set on classes, ids or directly on the HTML element.

This example shows how text in the color #AF8A91 looks like.

```
.text, #text, p{  
    color:#AF8A91  
}
```

If you want to add a text shadow in that color use the text-shadow property, you can generate a text shadow directly with our [CSS Text Shadow Generator](#).

Here you see how black text with a 4 pixel #AF8A91 colored shadow looks like.

```
.shadow{ text-shadow: 4px 4px 2px #AF8A91
}
```

## Border

The CSS property to change the border of an element to Decimal 11504273 is called "border". The border property can be set on classes, ids or directly on the HTML element.

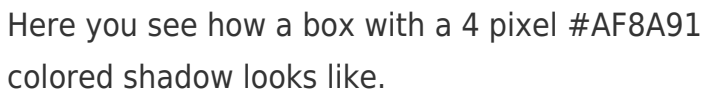
This example shows the color as border, it can be applied via the CSS property "border" or "border-color".

```
.border, #border, table{ border:4px solid
#AF8A91 }
```

If only the border color should be changed use the property border-color.

```
.border{ border-color:#AF8A91 }
```

If you want to add a box shadow in that color use:



Here you see how a box with a 4 pixel #AF8A91 colored shadow looks like.

```
.boxshadow{ -moz-box-shadow:4px 4px 4px  
4px #AF8A91; -webkit-box-shadow:4px 4px  
4px 4px #AF8A91; box-shadow:4px 4px 4px  
4px #AF8A91 }
```

# Background

The CSS property to change the background color of an element to Decimal 11504273 is called "background". The background property can be set on classes, ids or directly on the HTML element.

```
.background, #background, body{  
background:#AF8A91 }
```

If only the background color should be changed can be used:

```
.background{ background-color:#AF8A91 }
```

This example shows the color as background, it is applied via the CSS property "background".

To optimize and compress your CSS code, you can use our [online CSS compressor and optimizer](#) based on csstidy. If you want to create a linear or radial gradient as background or border, check our [CSS Gradient Generator](#).



Hey! You found this booklet interesting? Support Converting Colors with the new Membership Option!

The pro membership hides all ads, plus gives you double the colors in the color bucket, and more awesome pro features!

**[Learn more, Memberships starting at \\$2.50/m!](#)**

**Follow me  
on Twitter!**

@ConvertingColor