

Converting Colors

Decimal(11504513)

Have a look what the booklet for
Decimal(11504513) contains.

Decimal(11504513)	3
<i>Conversions</i>	4
<i>Details</i>	6
<i>Harmonies</i>	11
<i>Previews</i>	23
<i>Color Blindness Simulation</i>	26
<i>CSS Examples</i>	29

Color

Decimal(11504513)

Conversions

Conversions Part 1

Format	Color
Hex	AF8B81
RGB	175, 139, 129
RGB Percent	69%, 55%, 51%
CMY	0.3137, 0.4549, 0.4941
CMYK	0.00, 0.21, 0.26, 0.31
HSL	13°, 22%, 60%
HSV	13°, 26%, 69%
XYZ	30.8743, 29.1642, 24.7709
YIQ	148.6240, 24.6660, 4.5220

Conversions

Conversions Part 2

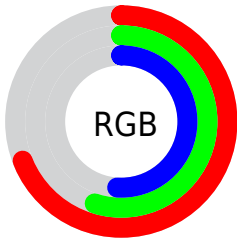
Format	Color
R_{YB}	175, 142, 129
Decimal	11504513
CIE _{Lab}	60.93, 12.13, 10.54
CIE _{LCh}	61, 16.068, 40.986
Yxy	29.1642, 0.3640, 0.3439
Android (android.graphics.Color)	4289694593 (0xFFAF8B81)
YUV	148.6240, -9.6746, 23.1318
Hunter-Lab	54.0039, 7.5425, 10.6071

Details

The Decimal color **11504513** is a dark color, and the websafe version is hex **CC9999**. A complement of this color would be **8496559**, and the grayscale version is **9803157**.

A 20% lighter version of the original color is **15188406**, and **8018256** is the 20% darker color. If you saturate the color by 10%, you get **11500911**, and if you desaturate by 10%, it is **11508115**.

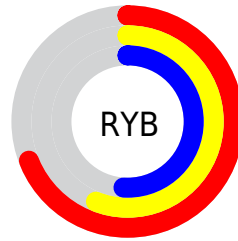
Distribution



Red (69%)

Green (55%)

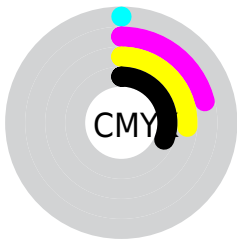
Blue (51%)



Red (69%)

Yellow (56%)

Blue (51%)

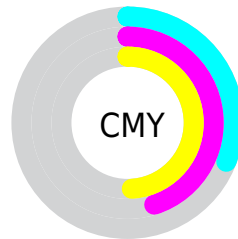


Cyan (0%)

Magenta (21%)

Yellow (26%)

Black (31%)



Cyan (31%)

Magenta (45%)

Yellow (49%)

Brightness & Saturation Gradients

These gradients show how the Decimal color 11504513 changes by changing the brightness by 10 percent. The first figure shows a shift by +10% for each color and the second figure -10%.

Similar to the brightness gradients but the following saturation gradients show a change of the Decimal color 11504513 by changing the saturation by 10% instead.

 11504513

 11504513

16777215

 9728360

 15188406

 8018256

 16768209

 6308153

 16775662

 4729635

 3151374

 1769472

 0

 11504513

 11504513

 11500911

 11508115

 11497566

 11511460

 11493964

 11515062

 11490363

 11518663

 11487017

 11522009

 11483416


 11525610

 11479814

 11529211

 11478528

 11532799

 11534335

Harmonies

Analogous

The Analogous color harmony consists of three colors that are next to each other on the color wheel.



11569550



11504513



10915705

Triad

The Triadic color harmony groups three colors that are evenly spaced from another and form a triangle on the color wheel.



11504513



7969417



9081519

Complementary

The Complementary color scheme is a pair of colors which are on the opposite of each other on the color wheel.



11504513



8496559

Split Complementary

Split-complementary colors differ from the complementary color scheme. The scheme consists of three colors, the original color and two neighbors of the complement color.



7903149



11504513



7314328

Square

The Square scheme is like the rectangle color scheme, but the four colors are evenly spaced on the color wheel.



11504513



9017469



7248549



10260136

Rectangle

The Rectangle color scheme consists of four colors that form a rectangle on the color wheel.



11504513



10392183



7248549



8688815

Sweetspot

The Sweet Spot groups the original color and five complimentary colors.



11504513



14931409



11501989



7563879



15921906



7566195

Same Dimension

The Same Dimension uses a secret algorithm to generate beautiful new colors.



11504513



14920346



11510401



5722190



9838848



1508608

Inverse Universe

The Inverse Universe completely reimagines the original color for something new.



8496559



10146787



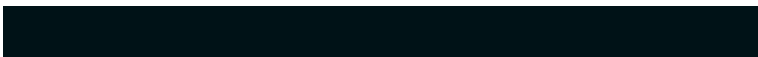
8490671



5133655



30358



4631

Previews

White Background



This preview shows how the Decimal color 11504513 looks on a white background.

Color Contrast Check

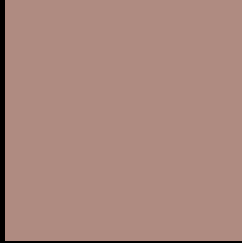
Large Text (above 18pt) WCAG AA ✓ Pass

Any Text WCAG AA × Fail

Large Text (above 18pt) WCAG AAA × Fail

Any Text WCAG AAA × Fail

Black Background



This preview shows how the Decimal color 11504513 looks on a black background.

Color Contrast Check

Large Text (above 18pt) WCAG AA ✓ Pass

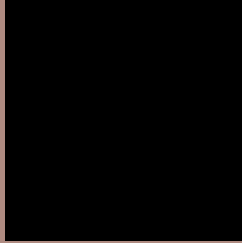
Any Text WCAG AA ✓ Pass

Large Text (above 18pt) WCAG AAA ✓ Pass

Any Text WCAG AAA × Fail

If you want to check with other color combinations, try the [Color Contrast Checker](#).

Decimal 11504513 Background



This preview shows how black text looks on a background with the Decimal color 11504513.



This preview shows how white text looks on a background with the Decimal color 11504513.

Color Blindness Simulation

Color vision deficiency is a very complex topic, and I could not describe the different causes any better than Wikipedia does, so if you want to learn more, you should check out their [article about color blindness](#).


Dichromacy



Original Color
11504513

Protanopia
10064773

Deuteranopia
11046528



Tritanopia
11634835

Trichromacy



Original Color
11504513

Protanomaly
10588292

Deuteranomaly
11242880

Tritanomaly
11569548

Monochromacy



Original Color
11504513

Achromatopsia
9803157

Achromatomaly
10391950

CSS Examples

Text

The CSS property to change the color of the text to Decimal 11504513 is called "color". The color property can be set on classes, ids or directly on the HTML element.

This example shows how text in the color #AF8B81 looks like.

```
.text, #text, p{  
    color:#AF8B81  
}
```

If you want to add a text shadow in that color use the text-shadow property, you can generate a text shadow directly with our [CSS Text Shadow Generator](#).

Here you see how black text with a 4 pixel #AF8B81 colored shadow looks like.

```
.shadow{ text-shadow: 4px 4px 2px #AF8B81
}
```

Border

The CSS property to change the border of an element to Decimal 11504513 is called "border". The border property can be set on classes, ids or directly on the HTML element.

This example shows the color as border, it can be applied via the CSS property "border" or "border-color".

```
.border, #border, table{ border:4px solid
#AF8B81 }
```

If only the border color should be changed use the property `border-color`.

```
.border{ border-color:#AF8B81 }
```

If you want to add a box shadow in that color use:

Here you see how a box with a 4 pixel #AF8B81 colored shadow looks like.

```
.boxshadow{ -moz-box-shadow:4px 4px 4px  
4px #AF8B81; -webkit-box-shadow:4px 4px  
4px 4px #AF8B81; box-shadow:4px 4px 4px  
4px #AF8B81 }
```

Background

The CSS property to change the background color of an element to Decimal 11504513 is called "background". The background property can be set on classes, ids or directly on the HTML element.

```
.background, #background, body{  
background:#AF8B81 }
```

If only the background color should be changed can be used:

```
.background{ background-color:#AF8B81 }
```

This example shows the color as background, it is applied via the CSS property "background".

To optimize and compress your CSS code, you can use our [online CSS compressor and optimizer](#) based on csstidy. If you want to create a linear or radial gradient as background or border, check our [CSS Gradient Generator](#).

Hey! You found this booklet interesting? Support Converting Colors with the new Membership Option!

The pro membership hides all ads, plus gives you double the colors in the color bucket, and more awesome pro features!

[Learn more, Memberships starting at \\$2.50/m!](#)

**Follow me
on Twitter!**

@ConvertingColor