

Converting Colors

Decimal(11504769)

Have a look what the booklet for
Decimal(11504769) contains.

Decimal(11504769)	3
<i>Conversions</i>	4
<i>Details</i>	6
<i>Harmonies</i>	11
<i>Previews</i>	23
<i>Color Blindness Simulation</i>	26
<i>CSS Examples</i>	29

Color

Decimal(11504769)

Conversions

Conversions Part 1

Format	Color
Hex	AF8C81
RGB	175, 140, 129
RGB Percent	69%, 55%, 51%
CMY	0.3137, 0.4510, 0.4941
CMYK	0.00, 0.20, 0.26, 0.31
HSL	14°, 22%, 60%
HSV	14°, 26%, 69%
XYZ	31.0197, 29.4551, 24.8194
YIQ	149.2110, 24.3910, 3.9990

Conversions

Conversions Part 2

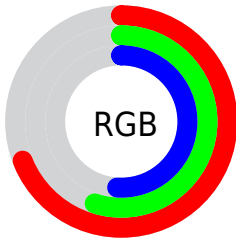
Format	Color
R_{YB}	175, 143, 129
Decimal	11504769
CIE _{Lab}	61.18, 11.57, 10.90
CIE _{LCh}	61, 15.894, 43.290
Yxy	29.4551, 0.3637, 0.3453
Android (android.graphics.Color)	4289694849 (0xFFAF8C81)
YUV	149.2110, -9.9640, 22.6170
Hunter-Lab	54.2726, 7.0455, 10.8769

Details

The Decimal color **11504769** is a dark color, and the websafe version is hex **CC9999**. A complement of this color would be **8496303**, and the grayscale version is **9803157**.

A 20% lighter version of the original color is **15188662**, and **8018512** is the 20% darker color. If you saturate the color by 10%, you get **11501423**, and if you desaturate by 10%, it is **11508115**.

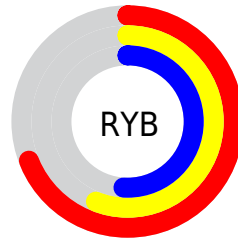
Distribution



Red (69%)

Green (55%)

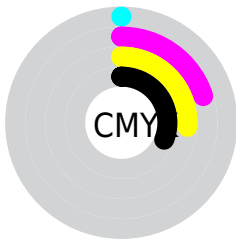
Blue (51%)



Red (69%)

Yellow (56%)

Blue (51%)

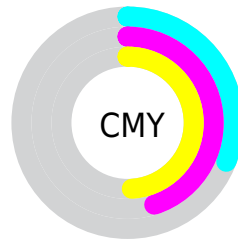


Cyan (0%)

Magenta (20%)

Yellow (26%)

Black (31%)



Cyan (31%)

Magenta (45%)

Yellow (49%)

Brightness & Saturation Gradients

These gradients show how the Decimal color 11504769 changes by changing the brightness by 10 percent. The first figure shows a shift by +10% for each color and the second figure -10%.

Similar to the brightness gradients but the following saturation gradients show a change of the Decimal color 11504769 by changing the saturation by 10% instead.

 11504769

 11504769

16777215

 9728616

 15188662

 8018512

 16768721

 6308409

 16775918

 4729891

 3151630

 1769472

 0

 11504769

 11504769

 11501423

 11508115

 11497822

 11511716

 11494476

 11515062

 11491131

 11518407

 11487529

 11522009

 11484184

 11525354

 11480838

 11528699

 11479552

 11532287

 11534335

Harmonies

Analogous

The Analogous color harmony consists of three colors that are next to each other on the color wheel.



11635342



11504769



10915961

Triad

The Triadic color harmony groups three colors that are evenly spaced from another and form a triangle on the color wheel.



11504769



7969675



9212847

Complementary

The Complementary color scheme is a pair of colors which are on the opposite of each other on the color wheel.



11504769



8496303

Split Complementary

Split-complementary colors differ from the complementary color scheme. The scheme consists of three colors, the original color and two neighbors of the complement color.



8034222



11504769



7314586

Square

The Square scheme is like the rectangle color scheme, but the four colors are evenly spaced on the color wheel.



11504769



8952191



7379622



10391208

Rectangle

The Rectangle color scheme consists of four colors that form a rectangle on the color wheel.



11504769



10326904



7379622



8819887

Sweetspot

The Sweet Spot groups the original color and five complimentary colors.



11504769



14931409



11501988



7563879



15921906



7566195

Same Dimension

The Same Dimension uses a secret algorithm to generate beautiful new colors.



11504769



14920858



11510657



5722190



9839616



1508608

Inverse Universe

The Inverse Universe completely reimagines the original color for something new.



8496303



10146531



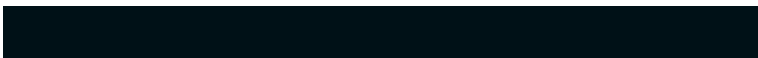
8490415



5133655



29334



4375

Previews

White Background



This preview shows how the Decimal color 11504769 looks on a white background.

Color Contrast Check

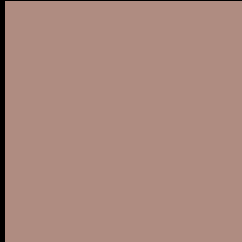
Large Text (above 18pt) WCAG AA ✓ Pass

Any Text WCAG AA × Fail

Large Text (above 18pt) WCAG AAA × Fail

Any Text WCAG AAA × Fail

Black Background



This preview shows how the Decimal color 11504769 looks on a black background.

Color Contrast Check

Large Text (above 18pt) WCAG AA ✓ Pass

Any Text WCAG AA ✓ Pass

Large Text (above 18pt) WCAG AAA ✓ Pass

Any Text WCAG AAA × Fail

If you want to check with other color combinations, try the [Color Contrast Checker](#).

Decimal 11504769 Background



This preview shows how black text looks on a background with the Decimal color 11504769.




This preview shows how white text looks on a background with the Decimal color 11504769.

Color Blindness Simulation

Color vision deficiency is a very complex topic, and I could not describe the different causes any better than Wikipedia does, so if you want to learn more, you should check out their [article about color blindness](#).

Dichromacy





Tritanopia
11635092

Trichromacy



Original Color
11504769

Protanomaly
10653828

Deuteranomaly
11242881

Tritanomaly
11569805

Monochromacy



Original Color
11504769

Achromatopsia
9803157

Achromatomaly
10392206

CSS Examples

Text

The CSS property to change the color of the text to Decimal 11504769 is called "color". The color property can be set on classes, ids or directly on the HTML element.

This example shows how text in the color #AF8C81 looks like.

```
.text, #text, p{  
    color:#AF8C81  
}
```

If you want to add a text shadow in that color use the text-shadow property, you can generate a text shadow directly with our [CSS Text Shadow Generator](#).

Here you see how black text with a 4 pixel #AF8C81 colored shadow looks like.

```
.shadow{ text-shadow: 4px 4px 2px #AF8C81
}
```

Border

The CSS property to change the border of an element to Decimal 11504769 is called "border". The border property can be set on classes, ids or directly on the HTML element.

This example shows the color as border, it can be applied via the CSS property "border" or "border-color".

```
.border, #border, table{ border:4px solid
#AF8C81 }
```

If only the border color should be changed use the property `border-color`.

```
.border{ border-color:#AF8C81 }
```

If you want to add a box shadow in that color use:

Here you see how a box with a 4 pixel #AF8C81 colored shadow looks like.

```
.boxshadow{ -moz-box-shadow:4px 4px 4px  
4px #AF8C81; -webkit-box-shadow:4px 4px  
4px 4px #AF8C81; box-shadow:4px 4px 4px  
4px #AF8C81 }
```

Background

The CSS property to change the background color of an element to Decimal 11504769 is called "background". The background property can be set on classes, ids or directly on the HTML element.

```
.background, #background, body{  
background:#AF8C81 }
```

If only the background color should be changed can be used:

```
.background{ background-color:#AF8C81 }
```

This example shows the color as background, it is applied via the CSS property "background".

To optimize and compress your CSS code, you can use our [online CSS compressor and optimizer](#) based on csstidy. If you want to create a linear or radial gradient as background or border, check our [CSS Gradient Generator](#).

Hey! You found this booklet interesting? Support Converting Colors with the new Membership Option!

The pro membership hides all ads, plus gives you double the colors in the color bucket, and more awesome pro features!

[Learn more, Memberships starting at \\$2.50/m!](#)

**Follow me
on Twitter!**

@ConvertingColor