

Converting Colors

Decimal(11504994)

Have a look what the booklet for
Decimal(11504994) contains.

| | |
|--|----|
| Decimal(11504994) | 3 |
| <i>Conversions</i> | 4 |
| <i>Details</i> | 6 |
| <i>Harmonies</i> | 11 |
| <i>Previews</i> | 23 |
| <i>Color Blindness Simulation</i> | 26 |
| <i>CSS Examples</i> | 29 |

Color

Decimal(11504994)

Conversions

Conversions Part 1

| Format | Color |
|---------------|----------------------------|
| Hex | AF8D62 |
| RGB | 175, 141, 98 |
| RGB Percent | 69%, 55%, 38% |
| CMY | 0.3137, 0.4471, 0.6157 |
| CMYK | 0.00, 0.19, 0.44, 0.31 |
| HSL | 34°, 32%, 54% |
| HSV | 34°, 44%, 69% |
| XYZ | 29.4087, 29.0456, 15.6116 |
| YIQ | 146.2640, 34.0670, -6.1650 |

Conversions

Conversions Part 2

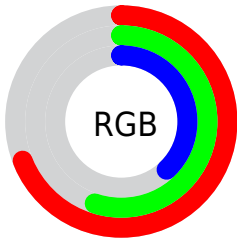
| Format | Color |
|-------------------------------------|--------------------------------|
| RYB | 159, 175, 98 |
| Decimal | 11504994 |
| CIELab | 60.82, 7.05, 27.77 |
| CIElCh | 61, 28.654, 75.752 |
| Yxy | 29.0456, 0.3971, 0.3922 |
| Android (android.graphics.Color) | 4289695074 (0xFFAF8D62) |
| YUV | 146.2640, -23.7942, 25.2015 |
| Hunter-Lab | 53.8939, 3.0890, 20.5510 |

Details

The Decimal color **11504994** is a dark color, and the websafe version is hex **CC9966**. A complement of this color would be **6456495**, and the grayscale version is **9605778**.

A 20% lighter version of the original color is **15254421**, and **7953203** is the 20% darker color. If you saturate the color by 10%, you get **11502929**, and if you desaturate by 10%, it is **11507060**.

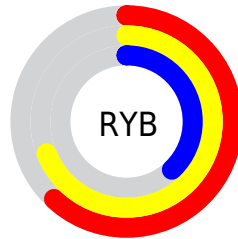
Distribution



Red (69%)

Green (55%)

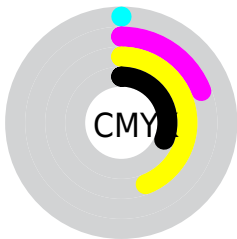
Blue (38%)



Red (62%)

Yellow (69%)

Blue (38%)

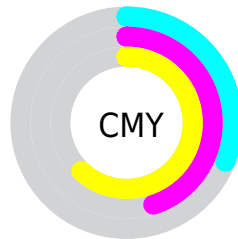


Cyan (0%)

Magenta (19%)

Yellow (44%)

Black (31%)



Cyan (31%)

Magenta (45%)

Yellow (62%)

Brightness & Saturation Gradients

These gradients show how the Decimal color 11504994 changes by changing the brightness by 10 percent. The first figure shows a shift by +10% for each color and the second figure -10%.

Similar to the brightness gradients but the following saturation gradients show a change of the Decimal color 11504994 by changing the saturation by 10% instead.

 11504994

 11504994

16777215

 9663562

 15254421

 7953203

 16768688

 6243356

 16776140

 4533509

 16777192

 2955520

 1310720

 0

 11504994

 11504994

 11502929

 11507060

■ 11501119

■ 11508869

■ 11499054

■ 11510935

■ 11496988

■ 11513000

■ 11494923

■ 11515066

■ 11493888

■ 11516875

■ 11518941

■ 11521006

■ 11523071

Harmonies

Analogous

The Analogous color harmony consists of three colors that are next to each other on the color wheel.



12617072



11504994



9934178

Triad

The Triadic color harmony groups three colors that are evenly spaced from another and form a triangle on the color wheel.



11504994



4432288



10979510

Complementary

The Complementary color scheme is a pair of colors which are on the opposite of each other on the color wheel.



11504994



6456495

Split Complementary

Split-complementary colors differ from the complementary color scheme. The scheme consists of three colors, the original color and two neighbors of the complement color.



8753603



11504994



4300470

Square

The Square scheme is like the rectangle color scheme, but the four colors are evenly spaced on the color wheel.



11504994



6070405



6199747



12419488

Rectangle

The Rectangle color scheme consists of four colors that form a rectangle on the color wheel.



11504994



8690281



6199747



10259132

Sweetspot

The Sweet Spot groups the original color and five complimentary colors.



11504994



14931653



11494021



7564128



15921906



7566195

Same Dimension

The Same Dimension uses a secret algorithm to generate beautiful new colors.



11504994



14921323



11251554



5722958



9851904



1510656

Inverse Universe

The Inverse Universe completely reimagines the original color for something new.



6456495



7053539



6709935



5132887



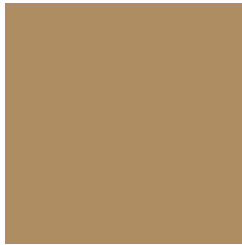
17046



2583

Previews

White Background



This preview shows how the Decimal color 11504994 looks on a white background.

Color Contrast Check

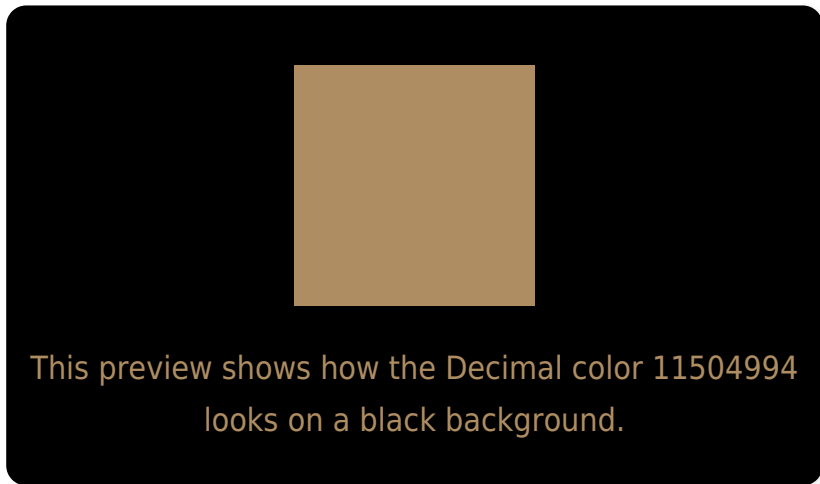
Large Text (above 18pt) WCAG AA ✓ Pass

Any Text WCAG AA × Fail

Large Text (above 18pt) WCAG AAA × Fail

Any Text WCAG AAA × Fail

Black Background



Color Contrast Check

Large Text (above 18pt) WCAG AA ✓ Pass

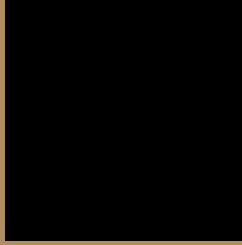
Any Text WCAG AA ✓ Pass

Large Text (above 18pt) WCAG AAA ✓ Pass

Any Text WCAG AAA × Fail

If you want to check with other color combinations, try the [Color Contrast Checker](#).

Decimal 11504994 Background



This preview shows how black text looks on a background with the Decimal color 11504994.



This preview shows how white text looks on a background with the Decimal color 11504994.

Color Blindness Simulation

Color vision deficiency is a very complex topic, and I could not describe the different causes any better than Wikipedia does, so if you want to learn more, you should check out their [article about color blindness](#).

Dichromacy



Original Color


11504994

Protanopia

10457956

Deuteranopia

11570530



Tritanopia
11831185

Trichromacy



Original Color
11504994

Protanomaly
10850659

Deuteranomaly
11570530

Tritanomaly
11700608

Monochromacy



Original Color
11504994

Achromatopsia
9605778

Achromatomaly
10326145

CSS Examples

Text

The CSS property to change the color of the text to Decimal 11504994 is called "color". The color property can be set on classes, ids or directly on the HTML element.

This example shows how text in the color #AF8D62 looks like.

```
.text, #text, p{  
  color:#AF8D62  
}
```

If you want to add a text shadow in that color use the text-shadow property, you can generate a text shadow directly with our [CSS Text Shadow Generator](#).

Here you see how black text with a 4 pixel #AF8D62 colored shadow looks like.

```
.shadow{ text-shadow: 4px 4px 2px #AF8D62
}
```

Border

The CSS property to change the border of an element to Decimal 11504994 is called "border". The border property can be set on classes, ids or directly on the HTML element.

This example shows the color as border, it can be applied via the CSS property "border" or "border-color".

```
.border, #border, table{ border:4px solid
#AF8D62 }
```

If only the border color should be changed use the property `border-color`.

```
.border{ border-color:#AF8D62 }
```

If you want to add a box shadow in that color use:

Here you see how a box with a 4 pixel #AF8D62 colored shadow looks like.

```
.boxshadow{ -moz-box-shadow:4px 4px 4px  
4px #AF8D62; -webkit-box-shadow:4px 4px  
4px 4px #AF8D62; box-shadow:4px 4px 4px  
4px #AF8D62 }
```

Background

The CSS property to change the background color of an element to Decimal 11504994 is called "background". The background property can be set on classes, ids or directly on the HTML element.

```
.background, #background, body{  
background:#AF8D62 }
```

If only the background color should be changed can be used:

```
.background{ background-color:#AF8D62 }
```

This example shows the color as background, it is applied via the CSS property "background".

To optimize and compress your CSS code, you can use our [online CSS compressor and optimizer](#) based on csstidy. If you want to create a linear or radial gradient as background or border, check our [CSS Gradient Generator](#).

Hey! You found this booklet interesting? Support Converting Colors with the new Membership Option!

The pro membership hides all ads, plus gives you double the colors in the color bucket, and more awesome pro features!

[Learn more, Memberships starting at \\$2.50/m!](#)

**Follow me
on Twitter!**

@ConvertingColor