

# Converting Colors

Decimal(11505275)

Have a look what the booklet for  
Decimal(11505275) contains.

<b>Decimal(11505275)</b> .....	3
<b><i>Conversions</i></b> .....	4
<b><i>Details</i></b> .....	6
<b><i>Harmonies</i></b> .....	11
<b><i>Previews</i></b> .....	23
<b><i>Color Blindness Simulation</i></b> .....	26
<b><i>CSS Examples</i></b> .....	29

# Color

**Decimal(11505275)**

# Conversions

## Conversions Part 1

<b>Format</b>	<b>Color</b>
Hex	AF8E7B
RGB	175, 142, 123
RGB Percent	69%, 56%, 48%
CMY	0.3137, 0.4431, 0.5176
CMYK	0.00, 0.19, 0.30, 0.31
HSL	22°, 25%, 58%
HSV	22°, 30%, 69%
XYZ	30.9273, 29.8900, 22.8782
YIQ	149.7010, 25.7670, 1.0870

# Conversions

## Conversions Part 2

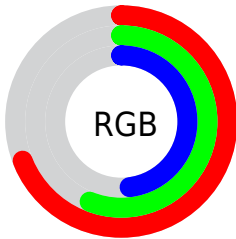
<b>Format</b>	<b>Color</b>
<b>R<sub>YB</sub></b>	175, 153, 123
Decimal	11505275
CIE <sub>Lab</sub>	61.56, 9.60, 14.82
CIE <sub>LCh</sub>	62, 17.658, 57.076
Yxy	29.8900, 0.3695, 0.3571
Android (android.graphics.Color)	4289695355 (0xFFAF8E7B)
YUV	149.7010, -13.1636, 22.1872
Hunter-Lab	54.6718, 5.3003, 13.4595

# Details

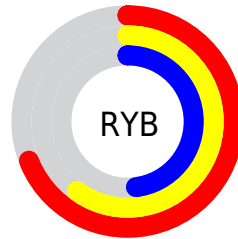
The Decimal color **11505275** is a dark color, and the websafe version is hex **CC9999**. A complement of this color would be **8101039**, and the grayscale version is **9868950**.

A 20% lighter version of the original color is **15189168**, and **8019018** is the 20% darker color. If you saturate the color by 10%, you get **11502442**, and if you desaturate by 10%, it is **11508108**.

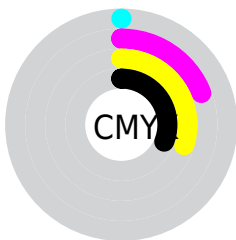
# Distribution



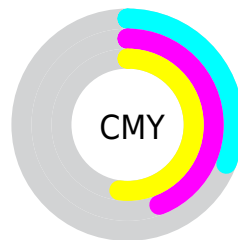
- Red (69%)
- Green (56%)
- Blue (48%)



- Red (69%)
- Yellow (60%)
- Blue (48%)



- Cyan (0%)
- Magenta (19%)
- Yellow (30%)
- Black (31%)



- Cyan (31%)
- Magenta (44%)
- Yellow (52%)

# Brightness & Saturation Gradients

These gradients show how the Decimal color 11505275 changes by changing the brightness by 10 percent. The first figure shows a shift by +10% for each color and the second figure -10%.

Similar to the brightness gradients but the following saturation gradients show a change of the Decimal color 11505275 by changing the saturation by 10% instead.



 11505275

 11505275

16777215

 9729122

 15189168

 8019018

 16769227

 6308916

 16776423

 4664862

 3152134

 1703936

 0

 11505275

 11505275

 11502442

 11508108

11499608

11510942

11496774

11513776

11493941

11516609

11490851

11519699

11488018

11522532

11485184

11525366

11528191

11531007

# Harmonies

## Analogous

The Analogous color harmony consists of three colors that are next to each other on the color wheel.



11897479



11505275



10654582

# Triad

The Triadic color harmony groups three colors that are evenly spaced from another and form a triangle on the color wheel.



11505275



7446162



9802160

# Complementary

The Complementary color scheme is a pair of colors which are on the opposite of each other on the color wheel.



11505275



8101039

# Split Complementary

Split-complementary colors differ from the complementary color scheme. The scheme consists of three colors, the original color and two neighbors of the complement color.



8492723



11505275



6987170

# Square

The Square scheme is like the rectangle color scheme, but the four colors are evenly spaced on the color wheel.



11505275



8428675



7379886



11046054

# Rectangle

The Rectangle color scheme consists of four colors that form a rectangle on the color wheel.



11505275



9934455



7379886



9409458



# Sweetspot

The Sweet Spot groups the original color and five complimentary colors.



11505275



14931663



11500445



7564134



15921906



7566195



# Same Dimension

The Same Dimension uses a secret algorithm to generate beautiful new colors.



11505275



14921617



11511675



5722446



9844480



1509376



# Inverse Universe

The Inverse Universe completely reimagines the original color for something new.



8101039



9553379



8094639



5133399



24470



3863



# Previews

## White Background



This preview shows how the Decimal color 11505275 looks on a white background.

## Color Contrast Check

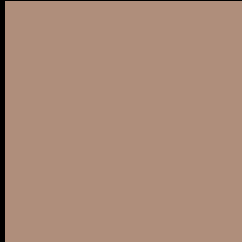
Large Text (above 18pt) WCAG AA ✓ Pass

Any Text WCAG AA × Fail

Large Text (above 18pt) WCAG AAA × Fail

Any Text WCAG AAA × Fail

# Black Background



This preview shows how the Decimal color 11505275 looks on a black background.

## Color Contrast Check

Large Text (above 18pt) WCAG AA ✓ Pass

Any Text WCAG AA ✓ Pass

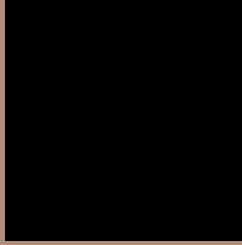
Large Text (above 18pt) WCAG AAA ✓ Pass

Any Text WCAG AAA × Fail

If you want to check with other color combinations, try the [Color Contrast Checker](#).



## Decimal 11505275 Background



This preview shows how black text looks on a background with the Decimal color 11505275.



This preview shows how white text looks on a background with the Decimal color 11505275.

# Color Blindness Simulation

Color vision deficiency is a very complex topic, and I could not describe the different causes any better than Wikipedia does, so if you want to learn more, you should check out their [article about color blindness](#).

## Dichromacy



**Original Color**  
11505275

**Protanopia**  
10327166

**Deuteranopia**  
11308923



**Tritanopia**  
11700885

# Trichromacy



**Original Color**  
11505275

**Protanomaly**  
10785405

**Deuteranomaly**  
11374459

**Tritanomaly**  
11635596

# Monochromacy



**Original Color**  
11505275

**Achromatopsia**  
9868950

**Achromatomaly**  
10457996

# CSS Examples

## Text

The CSS property to change the color of the text to Decimal 11505275 is called "color". The color property can be set on classes, ids or directly on the HTML element.

This example shows how text in the color #AF8E7B looks like.

```
.text, #text, p{  
    color:#AF8E7B  
}
```

If you want to add a text shadow in that color use the text-shadow property, you can generate a text shadow directly with our [CSS Text Shadow Generator](#).

Here you see how black text with a 4 pixel #AF8E7B colored shadow looks like.

```
.shadow{ text-shadow: 4px 4px 2px #AF8E7B
}
```

## Border

The CSS property to change the border of an element to Decimal 11505275 is called "border". The border property can be set on classes, ids or directly on the HTML element.

This example shows the color as border, it can be applied via the CSS property "border" or "border-color".

```
.border, #border, table{ border:4px solid
#AF8E7B }
```

If only the border color should be changed use the property `border-color`.

```
.border{ border-color:#AF8E7B }
```

If you want to add a box shadow in that color use:

Here you see how a box with a 4 pixel #AF8E7B colored shadow looks like.

```
.boxshadow{ -moz-box-shadow:4px 4px 4px  
4px #AF8E7B; -webkit-box-shadow:4px 4px  
4px 4px #AF8E7B; box-shadow:4px 4px 4px  
4px #AF8E7B }
```

# Background

The CSS property to change the background color of an element to Decimal 11505275 is called "background". The background property can be set on classes, ids or directly on the HTML element.

```
.background, #background, body{  
background:#AF8E7B }
```

If only the background color should be changed can be used:

```
.background{ background-color:#AF8E7B }
```

This example shows the color as background, it is applied via the CSS property "background".

To optimize and compress your CSS code, you can use our [online CSS compressor and optimizer](#) based on csstidy. If you want to create a linear or radial gradient as background or border, check our [CSS Gradient Generator](#).



Hey! You found this booklet interesting? Support Converting Colors with the new Membership Option!

The pro membership hides all ads, plus gives you double the colors in the color bucket, and more awesome pro features!

**[Learn more, Memberships starting at \\$2.50/m!](#)**

**Follow me  
on Twitter!**

@ConvertingColor