

Converting Colors

Decimal(11507324)

Have a look what the booklet for
Decimal(11507324) contains.

Decimal(11507324)	3
<i>Conversions</i>	4
<i>Details</i>	6
<i>Harmonies</i>	11
<i>Previews</i>	23
<i>Color Blindness Simulation</i>	26
<i>CSS Examples</i>	29

Color

Decimal(11507324)

Conversions

Conversions Part 1

Format	Color
Hex	AF967C
RGB	175, 150, 124
RGB Percent	69%, 59%, 49%
CMY	0.3137, 0.4118, 0.5137
CMYK	0.00, 0.14, 0.29, 0.31
HSL	31°, 24%, 59%
HSV	31°, 29%, 69%
XYZ	32.2236, 32.3819, 23.6207
YIQ	154.5110, 23.2460, -2.7860

Conversions

Conversions Part 2

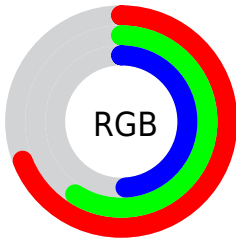
Format	Color
RYB	173, 175, 124
Decimal	11507324
CIELab	63.66, 5.29, 17.17
CIELCh	64, 17.964, 72.862
Yxy	32.3819, 0.3652, 0.3670
Android (android.graphics.Color)	4289697404 (0xFFAF967C)
YUV	154.5110, -15.0419, 17.9689
Hunter-Lab	56.9051, 1.4953, 15.2229

Details

The Decimal color **11507324** is a dark color, and the websafe version is hex **999966**. A complement of this color would be **8164783**, and the grayscale version is **10197915**.

A 20% lighter version of the original color is **15191217**, and **8020811** is the 20% darker color. If you saturate the color by 10%, you get **11505002**, and if you desaturate by 10%, it is **11509646**.

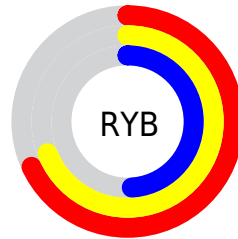
Distribution



Red (69%)

Green (59%)

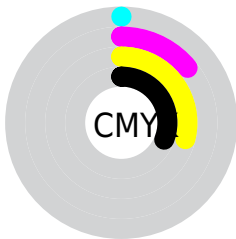
Blue (49%)



Red (68%)

Yellow (69%)

Blue (49%)

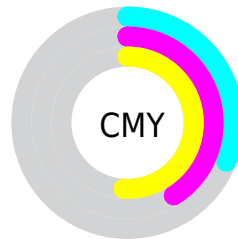


Cyan (0%)

Magenta (14%)

Yellow (29%)

Black (31%)



Cyan (31%)

Magenta (41%)

Yellow (51%)

Brightness & Saturation Gradients

These gradients show how the Decimal color 11507324 changes by changing the brightness by 10 percent. The first figure shows a shift by +10% for each color and the second figure -10%.


Similar to the brightness gradients but the following saturation gradients show a change of the Decimal color 11507324 by changing the saturation by 10% instead.

 11507324

 11507324

16777215

 9731171

 15191217

 8020811

 16771276

 6310708

 16777192

 4732191

 3219464

 1706240

 0

 11507324

 11507324

 11505002

 11509646

 11502937

 11511711

 11500616

 11514033

 11498550

 11516098

 11496229

 11518420

 11494163

 11520485

 11491841

 11522807

 11491584

 11525119

 11527167

Harmonies

Analogous

The Analogous color harmony consists of three colors that are next to each other on the color wheel.



12161413



11507324



10460027

Triad

The Triadic color harmony groups three colors that are evenly spaced from another and form a triangle on the color wheel.



11507324



7381921



10851506

Complementary

The Complementary color scheme is a pair of colors which are on the opposite of each other on the color wheel.



11507324



8164783

Split Complementary

Split-complementary colors differ from the complementary color scheme. The scheme consists of three colors, the original color and two neighbors of the complement color.



9542073



11507324



7381679

Square

The Square scheme is like the rectangle color scheme, but the four colors are evenly spaced on the color wheel.



11507324



8168336



8232632



11899044

Rectangle

The Rectangle color scheme consists of four colors that form a rectangle on the color wheel.



11507324



9674367



8232632



10458805

Sweetspot

The Sweet Spot groups the original color and five complimentary colors.



11507324



14932431



11500694



7564646



15921906



7566195

Same Dimension

The Same Dimension uses a secret algorithm to generate beautiful new colors.



11507324



14924948



11513724



5722702



9850112



1510400

Inverse Universe

The Inverse Universe completely reimagines the original color for something new.



8164783



9747171



8158383



5132887



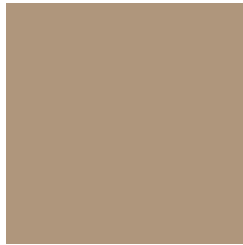
19094



2839

Previews

White Background



This preview shows how the Decimal color 11507324 looks on a white background.

Color Contrast Check

Large Text (above 18pt) WCAG AA × Fail

Any Text WCAG AA × Fail

Large Text (above 18pt) WCAG AAA × Fail

Any Text WCAG AAA × Fail

Black Background



This preview shows how the Decimal color 11507324 looks on a black background.

Color Contrast Check

Large Text (above 18pt) WCAG AA ✓ Pass

Any Text WCAG AA ✓ Pass

Large Text (above 18pt) WCAG AAA ✓ Pass

Any Text WCAG AAA ✓ Pass

If you want to check with other color combinations, try the [Color Contrast Checker](#).

Decimal 11507324 Background



This preview shows how black text looks on a background with the Decimal color 11507324.



This preview shows how white text looks on a background with the Decimal color 11507324.

Color Blindness Simulation

Color vision deficiency is a very complex topic, and I could not describe the different causes any better than Wikipedia does, so if you want to learn more, you should check out their [article about color blindness](#).

Dichromacy



Original Color
11507324

Protanopia
10721918

Deuteranopia
11768956



Tritanopia
11768221

Trichromacy



Original Color
11507324

Protanomaly
10983805

Deuteranomaly
11703676

Tritanomaly
11703185

Monochromacy



Original Color
11507324

Achromatopsia
10197915

Achromatomaly
10656144

CSS Examples

Text

The CSS property to change the color of the text to Decimal 11507324 is called "color". The color property can be set on classes, ids or directly on the HTML element.

This example shows how text in the color #AF967C looks like.

```
.text, #text, p{  
    color:#AF967C  
}
```

If you want to add a text shadow in that color use the text-shadow property, you can generate a text shadow directly with our [CSS Text Shadow Generator](#).

Here you see how black text with a 4 pixel #AF967C colored shadow looks like.

```
.shadow{ text-shadow: 4px 4px 2px #AF967C
}
```

Border

The CSS property to change the border of an element to Decimal 11507324 is called "border". The border property can be set on classes, ids or directly on the HTML element.

This example shows the color as border, it can be applied via the CSS property "border" or "border-color".

```
.border, #border, table{ border:4px solid
#AF967C }
```

If only the border color should be changed use the property `border-color`.

```
.border{ border-color:#AF967C }
```

If you want to add a box shadow in that color use:

Here you see how a box with a 4 pixel #AF967C colored shadow looks like.

```
.boxshadow{ -moz-box-shadow:4px 4px 4px  
4px #AF967C; -webkit-box-shadow:4px 4px  
4px 4px #AF967C; box-shadow:4px 4px 4px  
4px #AF967C }
```

Background

The CSS property to change the background color of an element to Decimal 11507324 is called "background". The background property can be set on classes, ids or directly on the HTML element.

```
.background, #background, body{  
background:#AF967C }
```

If only the background color should be changed can be used:

```
.background{ background-color:#AF967C }
```

This example shows the color as background, it is applied via the CSS property "background".

To optimize and compress your CSS code, you can use our [online CSS compressor and optimizer](#) based on csstidy. If you want to create a linear or radial gradient as background or border, check our [CSS Gradient Generator](#).

Hey! You found this booklet interesting? Support Converting Colors with the new Membership Option!

The pro membership hides all ads, plus gives you double the colors in the color bucket, and more awesome pro features!

[Learn more, Memberships starting at \\$2.50/m!](#)

**Follow me
on Twitter!**

@ConvertingColor