

Converting Colors

Decimal(11564919)

Have a look what the booklet for
Decimal(11564919) contains.

Decimal(11564919)	3
<i>Conversions</i>	4
<i>Details</i>	6
<i>Harmonies</i>	11
<i>Previews</i>	23
<i>Color Blindness Simulation</i>	26
<i>CSS Examples</i>	29

Color

Decimal(11564919)

Conversions

Conversions Part 1

Format	Color
Hex	B07777
RGB	176, 119, 119
RGB Percent	69%, 47%, 47%
CMY	0.3098, 0.5333, 0.5333
CMYK	0.00, 0.32, 0.32, 0.31
HSL	0°, 27%, 58%
HSV	0°, 32%, 69%
XYZ	27.8311, 23.7557, 20.5712
YIQ	136.0430, 33.9720, 12.0840

Conversions

Conversions Part 2

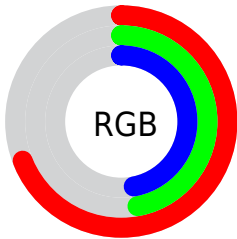
Format	Color
R_{YB}	176, 119, 119
Decimal	11564919
CIE Lab	55.84, 22.36, 9.10
CIE LCh	56, 24.140, 22.158
Yxy	23.7557, 0.3857, 0.3292
Android (android.graphics.Color)	4289754999 (0xFFB07777)
YUV	136.0430, -8.4022, 35.0423
Hunter-Lab	48.7398, 16.6314, 9.0938

Details

The Decimal color **11564919** is a dark color, and the websafe version is hex **996666**. A complement of this color would be **7844016**, and the grayscale version is **8947848**.

A 20% lighter version of the original color is **15314091**, and **8013383** is the 20% darker color. If you saturate the color by 10%, you get **11560293**, and if you desaturate by 10%, it is **11569545**.

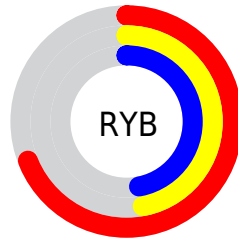
Distribution



Red (69%)

Green (47%)

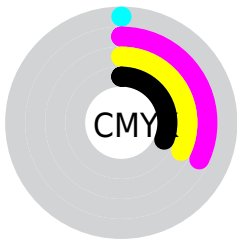
Blue (47%)



Red (69%)

Yellow (47%)

Blue (47%)

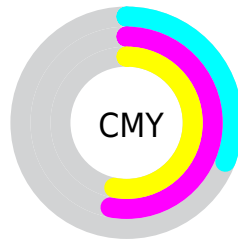


Cyan (0%)

Magenta (32%)

Yellow (32%)

Black (31%)



Cyan (31%)

Magenta (53%)

Yellow (53%)

Brightness & Saturation Gradients

These gradients show how the Decimal color 11564919 changes by changing the brightness by 10 percent. The first figure shows a shift by +10% for each color and the second figure -10%.

Similar to the brightness gradients but the following saturation gradients show a change of the Decimal color 11564919 by changing the saturation by 10% instead.



11564919



11564919

16777215



9789022



15314091



8013383



16762822



6303536



16770018



4593692



3080704



786432



0



11564919



11564919



11560293



11569545

 11555924

 11573914

 11551298

 11578540

 11546929

 11582909

 11542303

 11587535

 11537677

 11592161

 11534336

 11596530

 11599871

Harmonies

Analogous

The Analogous color harmony consists of three colors that are next to each other on the color wheel.



11302796



11564919



11107430

Triad

The Triadic color harmony groups three colors that are evenly spaced from another and form a triangle on the color wheel.



11564919



7179884



6523311

Complementary

The Complementary color scheme is a pair of colors which are on the opposite of each other on the color wheel.



11564919



7844016

Split Complementary

Split-complementary colors differ from the complementary color scheme. The scheme consists of three colors, the original color and two neighbors of the complement color.



4886438



11564919



5607807

Square

The Square scheme is like the rectangle color scheme, but the four colors are evenly spaced on the color wheel.



11564919



8751455



4559253



8487596

Rectangle

The Rectangle color scheme consists of four colors that form a rectangle on the color wheel.



11564919



10518622



4559253



5868461

Sweetspot

The Sweet Spot groups the original color and five complimentary colors.



11564919



15126479



11564976



7562597



15921906



7566195

Same Dimension

The Same Dimension uses a secret algorithm to generate beautiful new colors.



11564919



15109260



11572343



5853264



10027008



1703936

Inverse Universe

The Inverse Universe completely reimagines the original color for something new.



7844016



9234150



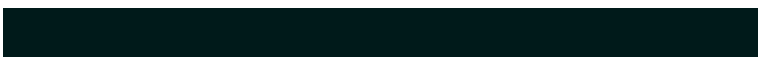
7836848



5265753



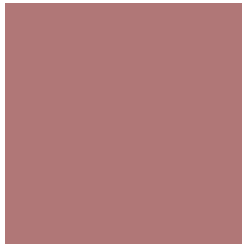
39321



6682

Previews

White Background



This preview shows how the Decimal color 11564919 looks on a white background.

Color Contrast Check

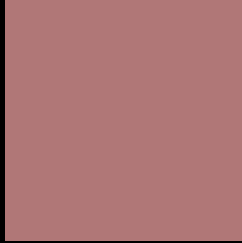
Large Text (above 18pt) WCAG AA ✓ Pass

Any Text WCAG AA × Fail

Large Text (above 18pt) WCAG AAA × Fail

Any Text WCAG AAA × Fail

Black Background



This preview shows how the Decimal color 11564919 looks on a black background.

Color Contrast Check

Large Text (above 18pt) WCAG AA ✓ Pass

Any Text WCAG AA ✓ Pass

Large Text (above 18pt) WCAG AAA ✓ Pass

Any Text WCAG AAA × Fail

If you want to check with other color combinations, try the [Color Contrast Checker](#).

Decimal 11564919 Background



This preview shows how black text looks on a background with the Decimal color 11564919.



This preview shows how white text looks on a background with the Decimal color 11564919.

Color Blindness Simulation

Color vision deficiency is a very complex topic, and I could not describe the different causes any better than Wikipedia does, so if you want to learn more, you should check out their [article about color blindness](#).

Dichromacy





Tritanopia
11630207

Trichromacy



Original Color
11564919

Protanomaly
9994620

Deuteranomaly
10583414

Tritanomaly
11630204

Monochromacy



Original Color
11564919

Achromatopsia
8947848

Achromatomaly
9929346

CSS Examples

Text

The CSS property to change the color of the text to Decimal 11564919 is called "color". The color property can be set on classes, ids or directly on the HTML element.

This example shows how text in the color #B07777 looks like.

```
.text, #text, p{  
  color:#B07777  
}
```

If you want to add a text shadow in that color use the text-shadow property, you can generate a text shadow directly with our [CSS Text Shadow Generator](#).

Here you see how black text with a 4 pixel #B07777 colored shadow looks like.

```
.shadow{ text-shadow: 4px 4px 2px #B07777  
}
```

Border

The CSS property to change the border of an element to Decimal 11564919 is called "border". The border property can be set on classes, ids or directly on the HTML element.

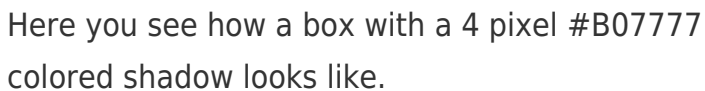
This example shows the color as border, it can be applied via the CSS property "border" or "border-color".

```
.border, #border, table{ border:4px solid  
#B07777 }
```

If only the border color should be changed use the property border-color.

```
.border{ border-color:#B07777 }
```

If you want to add a box shadow in that color use:



Here you see how a box with a 4 pixel #B07777 colored shadow looks like.

```
.boxshadow{ -moz-box-shadow:4px 4px 4px  
4px #B07777; -webkit-box-shadow:4px 4px  
4px 4px #B07777; box-shadow:4px 4px 4px  
4px #B07777 }
```

Background

The CSS property to change the background color of an element to Decimal 11564919 is called "background". The background property can be set on classes, ids or directly on the HTML element.

```
.background, #background, body{  
background:#B07777 }
```

If only the background color should be changed can be used:

```
.background{ background-color:#B07777 }
```

This example shows the color as background, it is applied via the CSS property "background".

To optimize and compress your CSS code, you can use our [online CSS compressor and optimizer](#) based on csstidy. If you want to create a linear or radial gradient as background or border, check our [CSS Gradient Generator](#).

Hey! You found this booklet interesting? Support Converting Colors with the new Membership Option!

The pro membership hides all ads, plus gives you double the colors in the color bucket, and more awesome pro features!

[Learn more, Memberships starting at \\$2.50/m!](#)

**Follow me
on Twitter!**

@ConvertingColor