

Converting Colors

Decimal(11566173)

Have a look what the booklet for
Decimal(11566173) contains.

Decimal(11566173)	3
<i>Conversions</i>	4
<i>Details</i>	6
<i>Harmonies</i>	11
<i>Previews</i>	23
<i>Color Blindness Simulation</i>	26
<i>CSS Examples</i>	29

Color

Decimal(11566173)

Conversions

Conversions Part 1

Format	Color
Hex	B07C5D
RGB	176, 124, 93
RGB Percent	69%, 49%, 36%
CMY	0.3098, 0.5137, 0.6353
CMYK	0.00, 0.30, 0.47, 0.31
HSL	22°, 34%, 53%
HSV	22°, 47%, 69%
XYZ	27.0879, 24.4357, 13.6448
YIQ	136.0140, 40.9430, 1.3830

Conversions

Conversions Part 2

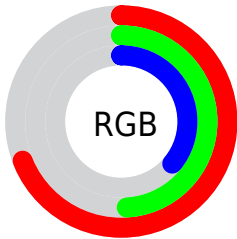
Format	Color
R _Y B	176, 142, 93
Decimal	11566173
CIE Lab	56.52, 16.45, 24.95
CIE LCh	57, 29.886, 56.609
Yxy	24.4357, 0.4157, 0.3750
Android (android.graphics.Color)	4289756253 (0xFFB07C5D)
YUV	136.0140, -21.2059, 35.0677
Hunter-Lab	49.4325, 11.3072, 18.2370

Details

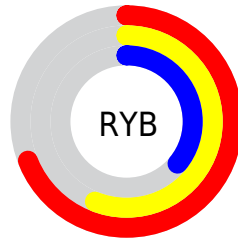
The Decimal color **11566173** is a dark color, and the websafe version is hex **CC9966**. A complement of this color would be **6132144**, and the grayscale version is **8947848**.

A 20% lighter version of the original color is **15380880**, and **7949102** is the 20% darker color. If you saturate the color by 10%, you get **11563339**, and if you desaturate by 10%, it is **11569007**.

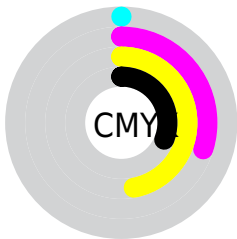
Distribution



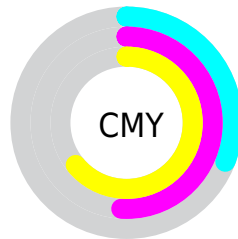
- Red (69%)
- Green (49%)
- Blue (36%)



- Red (69%)
- Yellow (56%)
- Blue (36%)



- Cyan (0%)
- Magenta (30%)
- Yellow (47%)
- Black (31%)



- Cyan (31%)
- Magenta (51%)
- Yellow (64%)

Brightness & Saturation Gradients

These gradients show how the Decimal color 11566173 changes by changing the brightness by 10 percent. The first figure shows a shift by +10% for each color and the second figure -10%.

Similar to the brightness gradients but the following saturation gradients show a change of the Decimal color 11566173 by changing the saturation by 10% instead.

 11566173  11566173

16777215  9724741

 15380880  7949102


 16764074  6173721

 16771270  4529664

 16777186  2885888

16777214  262144

 0

 11566173  11566173

 11563339  11569007

11560506

11571840

11557672

11574674

11554839

11577507

11552005

11580341

11551232

11583175

11586008

11588842

11591675

Harmonies

Analogous

The Analogous color harmony consists of three colors that are next to each other on the color wheel.



12219762



11566173



10257747

Triad

The Triadic color harmony groups three colors that are evenly spaced from another and form a triangle on the color wheel.



11566173



4363652



8880822

Complementary

The Complementary color scheme is a pair of colors which are on the opposite of each other on the color wheel.



11566173



6132144

Split Complementary

Split-complementary colors differ from the complementary color scheme. The scheme consists of three colors, the original color and two neighbors of the complement color.



6196155



11566173



2594206

Square

The Square scheme is like the rectangle color scheme, but the four colors are evenly spaced on the color wheel.



11566173



6525802



3510962



10910117

Rectangle

The Rectangle color scheme consists of four colors that form a rectangle on the color wheel.



11566173



9145173



3510962



8029625

Sweetspot

The Sweet Spot groups the original color and five complimentary colors.



11566173



15126981



11558290



7563103



15921906



7566195

Same Dimension

The Same Dimension uses a secret algorithm to generate beautiful new colors.



11566173



15111267



11576669



5854288



10041600



1706496

Inverse Universe

The Inverse Universe completely reimagines the original color for something new.



6132144



6534630



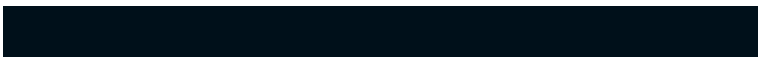
6121648



5264985



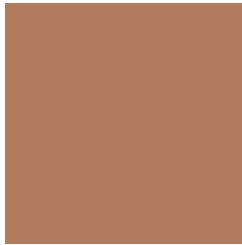
24729



4122

Previews

White Background



This preview shows how the Decimal color 11566173 looks on a white background.

Color Contrast Check

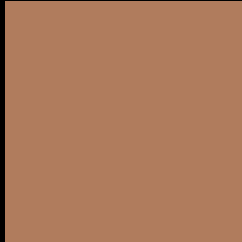
Large Text (above 18pt) WCAG AA ✓ Pass

Any Text WCAG AA × Fail

Large Text (above 18pt) WCAG AAA × Fail

Any Text WCAG AAA × Fail

Black Background



This preview shows how the Decimal color 11566173 looks on a black background.

Color Contrast Check

Large Text (above 18pt) WCAG AA ✓ Pass

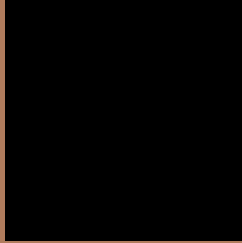
Any Text WCAG AA ✓ Pass

Large Text (above 18pt) WCAG AAA ✓ Pass

Any Text WCAG AAA × Fail

If you want to check with other color combinations, try the [Color Contrast Checker](#).

Decimal 11566173 Background



This preview shows how black text looks on a background with the Decimal color 11566173.




This preview shows how white text looks on a background with the Decimal color 11566173.

Color Blindness Simulation

Color vision deficiency is a very complex topic, and I could not describe the different causes any better than Wikipedia does, so if you want to learn more, you should check out their [article about color blindness](#).

Dichromacy





Tritanopia
11761536

Trichromacy



Original Color
11566173

Protanomaly
10323040

Deuteranomaly
11042908

Tritanomaly
11696499

Monochromacy



Original Color
11566173

Achromatopsia
8947848

Achromatomaly
9929848

CSS Examples

Text

The CSS property to change the color of the text to Decimal 11566173 is called "color". The color property can be set on classes, ids or directly on the HTML element.

This example shows how text in the color #B07C5D looks like.

```
.text, #text, p{  
    color:#B07C5D  
}
```

If you want to add a text shadow in that color use the text-shadow property, you can generate a text shadow directly with our [CSS Text Shadow Generator](#).

Here you see how black text with a 4 pixel #B07C5D colored shadow looks like.

```
.shadow{ text-shadow: 4px 4px 2px #B07C5D
}
```

Border

The CSS property to change the border of an element to Decimal 11566173 is called "border". The border property can be set on classes, ids or directly on the HTML element.

This example shows the color as border, it can be applied via the CSS property "border" or "border-color".

```
.border, #border, table{ border:4px solid
#B07C5D }
```

If only the border color should be changed use the property `border-color`.

```
.border{ border-color:#B07C5D }
```

If you want to add a box shadow in that color use:

Here you see how a box with a 4 pixel #B07C5D colored shadow looks like.

```
.boxshadow{ -moz-box-shadow:4px 4px 4px  
4px #B07C5D; -webkit-box-shadow:4px 4px  
4px 4px #B07C5D; box-shadow:4px 4px 4px  
4px #B07C5D }
```

Background

The CSS property to change the background color of an element to Decimal 11566173 is called "background". The background property can be set on classes, ids or directly on the HTML element.

```
.background, #background, body{  
background:#B07C5D }
```

If only the background color should be changed can be used:

```
.background{ background-color:#B07C5D }
```

This example shows the color as background, it is applied via the CSS property "background".

To optimize and compress your CSS code, you can use our [online CSS compressor and optimizer](#) based on csstidy. If you want to create a linear or radial gradient as background or border, check our [CSS Gradient Generator](#).

Hey! You found this booklet interesting? Support Converting Colors with the new Membership Option!

The pro membership hides all ads, plus gives you double the colors in the color bucket, and more awesome pro features!

[Learn more, Memberships starting at \\$2.50/m!](#)

**Follow me
on Twitter!**

@ConvertingColor