

Converting Colors

Decimal(11566929)

Have a look what the booklet for
Decimal(11566929) contains.

| | |
|--|----|
| Decimal(11566929) | 3 |
| <i>Conversions</i> | 4 |
| <i>Details</i> | 6 |
| <i>Harmonies</i> | 11 |
| <i>Previews</i> | 23 |
| <i>Color Blindness Simulation</i> | 26 |
| <i>CSS Examples</i> | 29 |

Color

Decimal(11566929)

Conversions

Conversions Part 1

| Format | Color |
|---------------|----------------------------|
| Hex | B07F51 |
| RGB | 176, 127, 81 |
| RGB Percent | 69%, 50%, 32% |
| CMY | 0.3098, 0.5020, 0.6824 |
| CMYK | 0.00, 0.28, 0.54, 0.31 |
| HSL | 29°, 38%, 50% |
| HSV | 29°, 54%, 69% |
| XYZ | 26.9791, 25.0029, 11.1887 |
| YIQ | 136.4070, 43.9700, -3.9180 |

Conversions

Conversions Part 2

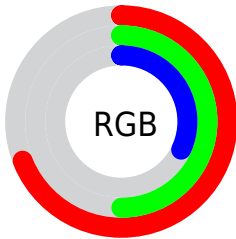
| Format | Color |
|-------------------------------------|--------------------------------|
| RYB | 176, 170, 81 |
| Decimal | 11566929 |
| CIELab | 57.08, 13.61, 32.32 |
| CIELCh | 57, 35.067, 67.169 |
| Yxy | 25.0029, 0.4271, 0.3958 |
| Android (android.graphics.Color) | 4289757009 (0xFFB07F51) |
| YUV | 136.4070, -27.3157, 34.7231 |
| Hunter-Lab | 50.0029, 8.8045, 21.7353 |

Details

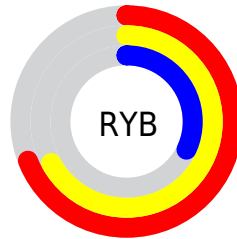
The Decimal color **11566929** is a dark color, and the websafe version is hex **CC9966**. A complement of this color would be **5341872**, and the grayscale version is **9013641**.

A 20% lighter version of the original color is **15381635**, and **7949858** is the 20% darker color. If you saturate the color by 10%, you get **11564607**, and if you desaturate by 10%, it is **11569251**.

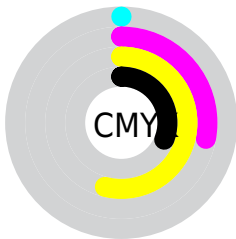
Distribution



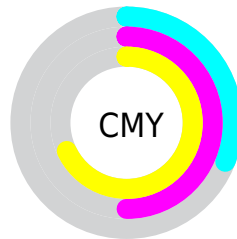
- Red (69%)
- Green (50%)
- Blue (32%)



- Red (69%)
- Yellow (67%)
- Blue (32%)



- Cyan (0%)
- Magenta (28%)
- Yellow (54%)
- Black (31%)



- Cyan (31%)
- Magenta (50%)
- Yellow (68%)

Brightness & Saturation Gradients

These gradients show how the Decimal color 11566929 changes by changing the brightness by 10 percent. The first figure shows a shift by +10% for each color and the second figure -10%.

Similar to the brightness gradients but the following saturation gradients show a change of the Decimal color 11566929 by changing the saturation by 10% instead.



11566929



11566929

16777215



9725497



15381635



7949858



16764830



6174476



16772281



4464896



16777173



2755840



16777201



196608



0



11566929



11566929



11564607



11569251

■ 11562286

■ 11571572

■ 11559964

■ 11573894

■ 11557643

■ 11576215

■ 11556096

■ 11578537

■ 11580859

■ 11583436

■ 11585758

■ 11588079

Harmonies

Analogous

The Analogous color harmony consists of three colors that are next to each other on the color wheel.



12678502



11566929



9800267

Triad

The Triadic color harmony groups three colors that are evenly spaced from another and form a triangle on the color wheel.



11566929



1415568



9862842

Complementary

The Complementary color scheme is a pair of colors which are on the opposite of each other on the color wheel.



11566929



5341872

Split Complementary

Split-complementary colors differ from the complementary color scheme. The scheme consists of three colors, the original color and two neighbors of the complement color.



6785733



11566929



39085

Square

The Square scheme is like the rectangle color scheme, but the four colors are evenly spaced on the color wheel.



11566929



5150576



2659265



11891873

Rectangle

The Rectangle color scheme consists of four colors that form a rectangle on the color wheel.



11566929



8425553



2659265



8946367

Sweetspot

The Sweet Spot groups the original color and five complimentary colors.



11566929



15127489



11555202



7563357



15921906



7566195

Same Dimension

The Same Dimension uses a secret algorithm to generate beautiful new colors.



11566929



15112528



11578961



5854544



10045952



1707008

Inverse Universe

The Inverse Universe completely reimagines the original color for something new.



5341872



5283302



5329840



5264729



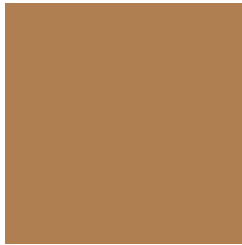
20377



3354

Previews

White Background



This preview shows how the Decimal color 11566929 looks on a white background.

Color Contrast Check

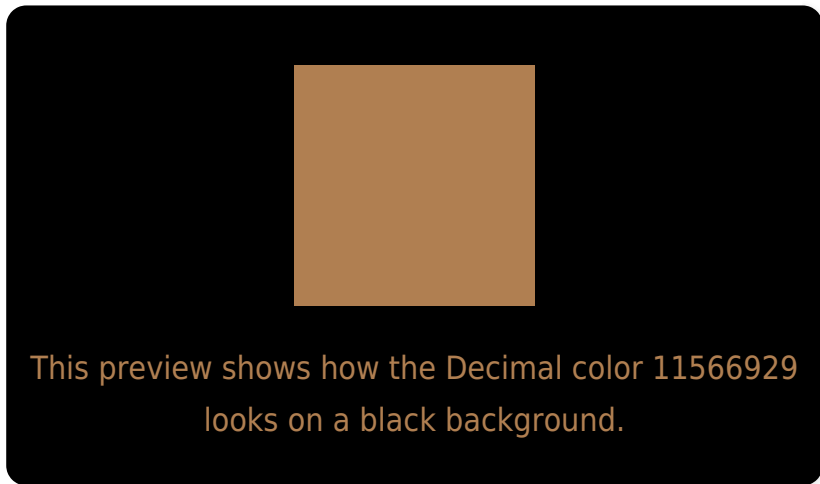
Large Text (above 18pt) WCAG AA ✓ Pass

Any Text WCAG AA ✗ Fail

Large Text (above 18pt) WCAG AAA ✗ Fail

Any Text WCAG AAA ✗ Fail

Black Background



Color Contrast Check

Large Text (above 18pt) WCAG AA ✓ Pass

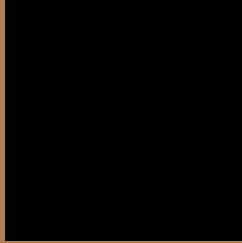
Any Text WCAG AA ✓ Pass

Large Text (above 18pt) WCAG AAA ✓ Pass

Any Text WCAG AAA × Fail

If you want to check with other color combinations, try the [Color Contrast Checker](#).

Decimal 11566929 Background



This preview shows how black text looks on a background with the Decimal color 11566929.



This preview shows how white text looks on a background with the Decimal color 11566929.

Color Blindness Simulation

Color vision deficiency is a very complex topic, and I could not describe the different causes any better than Wikipedia does, so if you want to learn more, you should check out their [article about color blindness](#).

Dichromacy



Original Color

11566929

Protanopia

9865557

Deuteranopia

10978128



Tritanopia
11827586

Trichromacy



Original Color
11566929

Protanomaly
10454356

Deuteranomaly
11174480

Tritanomaly
11762544

Monochromacy



Original Color
11566929

Achromatopsia
8947848

Achromatomaly
9930100

CSS Examples

Text

The CSS property to change the color of the text to Decimal 11566929 is called "color". The color property can be set on classes, ids or directly on the HTML element.

This example shows how text in the color #B07F51 looks like.

```
.text, #text, p{  
    color:#B07F51  
}
```

If you want to add a text shadow in that color use the text-shadow property, you can generate a text shadow directly with our [CSS Text Shadow Generator](#).

Here you see how black text with a 4 pixel #B07F51 colored shadow looks like.

```
.shadow{ text-shadow: 4px 4px 2px #B07F51
}
```

Border

The CSS property to change the border of an element to Decimal 11566929 is called "border". The border property can be set on classes, ids or directly on the HTML element.

This example shows the color as border, it can be applied via the CSS property "border" or "border-color".

```
.border, #border, table{ border:4px solid
#B07F51 }
```

If only the border color should be changed use the property `border-color`.

```
.border{ border-color:#B07F51 }
```

If you want to add a box shadow in that color use:

Here you see how a box with a 4 pixel #B07F51 colored shadow looks like.

```
.boxshadow{ -moz-box-shadow:4px 4px 4px  
4px #B07F51; -webkit-box-shadow:4px 4px  
4px 4px #B07F51; box-shadow:4px 4px 4px  
4px #B07F51 }
```

Background

The CSS property to change the background color of an element to Decimal 11566929 is called "background". The background property can be set on classes, ids or directly on the HTML element.

```
.background, #background, body{  
background:#B07F51 }
```

If only the background color should be changed can be used:

```
.background{ background-color:#B07F51 }
```

This example shows the color as background, it is applied via the CSS property "background".

To optimize and compress your CSS code, you can use our [online CSS compressor and optimizer](#) based on csstidy. If you want to create a linear or radial gradient as background or border, check our [CSS Gradient Generator](#).

Hey! You found this booklet interesting? Support Converting Colors with the new Membership Option!

The pro membership hides all ads, plus gives you double the colors in the color bucket, and more awesome pro features!

[Learn more, Memberships starting at \\$2.50/m!](#)

**Follow me
on Twitter!**

@ConvertingColor