

Converting Colors

Decimal(11566980)

Have a look what the booklet for
Decimal(11566980) contains.

Decimal(11566980)	3
<i>Conversions</i>	4
<i>Details</i>	6
<i>Harmonies</i>	11
<i>Previews</i>	23
<i>Color Blindness Simulation</i>	26
<i>CSS Examples</i>	29

Color

Decimal(11566980)

Conversions

Conversions Part 1

Format	Color
Hex	B07F84
RGB	176, 127, 132
RGB Percent	69%, 50%, 52%
CMY	0.3098, 0.5020, 0.4824
CMYK	0.00, 0.28, 0.25, 0.31
HSL	354°, 24%, 59%
HSV	354°, 28%, 69%
XYZ	29.6587, 26.0748, 25.2995
YIQ	142.2210, 27.5990, 11.9430

Conversions

Conversions Part 2

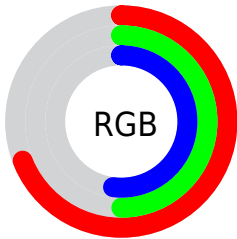
Format	Color
R_{YB}	176, 127, 132
Decimal	11566980
CIE Lab	58.11, 19.71, 4.82
CIE LCh	58, 20.286, 13.736
Yxy	26.0748, 0.3660, 0.3218
Android (android.graphics.Color)	4289757060 (0xFFB07F84)
YUV	142.2210, -5.0390, 29.6242
Hunter-Lab	51.0635, 14.3154, 6.3690

Details

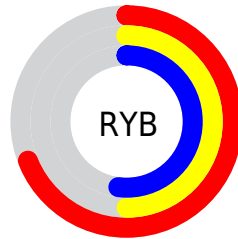
The Decimal color **11566980** is a dark color, and the websafe version is hex **CC9999**. A complement of this color would be **8368299**, and the grayscale version is **9342606**.

A 20% lighter version of the original color is **15250617**, and **8015187** is the 20% darker color. If you saturate the color by 10%, you get **11562356**, and if you desaturate by 10%, it is **11571604**.

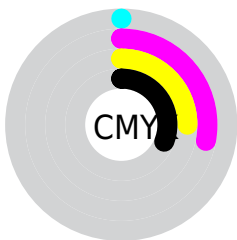
Distribution



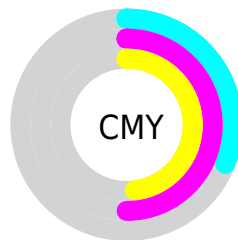
- Red (69%)
- Green (50%)
- Blue (52%)



- Red (69%)
- Yellow (50%)
- Blue (52%)



- Cyan (0%)
- Magenta (28%)
- Yellow (25%)
- Black (31%)



- Cyan (31%)
- Magenta (50%)
- Yellow (48%)

Brightness & Saturation Gradients

These gradients show how the Decimal color 11566980 changes by changing the brightness by 10 percent. The first figure shows a shift by +10% for each color and the second figure -10%.

Similar to the brightness gradients but the following saturation gradients show a change of the Decimal color 11566980 by changing the saturation by 10% instead.

 11566980

 11566980

16777215

 9791083

 15250617

 8015187

 16765141

 6370876

 16772337

 4726822

 3148305

 1572865

 0

 11566980

 11566980

 11562356

 11571604

 11557988

 11575972

 11553365

 11580595

 11548997


 11584963

 11544373

 11589587

 11539749

 11594211

 11535381

 11598579

 11534354

 11599871

Harmonies

Analogous

The Analogous color harmony consists of three colors that are next to each other on the color wheel.



11108502



11566980



11371124

Triad

The Triadic color harmony groups three colors that are evenly spaced from another and form a triangle on the color wheel.



11566980



8163954



6983853

Complementary

The Complementary color scheme is a pair of colors which are on the opposite of each other on the color wheel.



11566980



8368299

Split Complementary

Split-complementary colors differ from the complementary color scheme. The scheme consists of three colors, the original color and two neighbors of the complement color.



5936292



11566980



6919553

Square

The Square scheme is like the rectangle color scheme, but the four colors are evenly spaced on the color wheel.



11566980



9473385



6002323



8555182

Rectangle

The Rectangle color scheme consists of four colors that form a rectangle on the color wheel.



11566980



10913132



6002323



6525611

Sweetspot

The Sweet Spot groups the original color and five complimentary colors.



11566980



15127509



11173808



7563112



15921906



7566195

Same Dimension

The Same Dimension uses a secret algorithm to generate beautiful new colors.



11566980



15112865



11571839



5853265



10027024



1703939

Inverse Universe

The Inverse Universe completely reimagines the original color for something new.



11566980



15112865



8363440



5853265



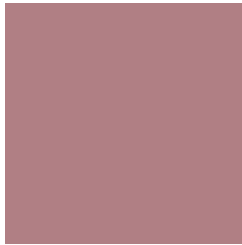
10027024



1703939

Previews

White Background



This preview shows how the Decimal color 11566980 looks on a white background.

Color Contrast Check

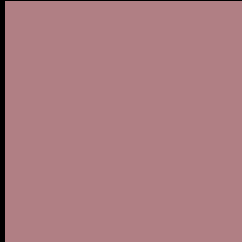
Large Text (above 18pt) WCAG AA ✓ Pass

Any Text WCAG AA × Fail

Large Text (above 18pt) WCAG AAA × Fail

Any Text WCAG AAA × Fail

Black Background



This preview shows how the Decimal color 11566980 looks on a black background.

Color Contrast Check

Large Text (above 18pt) WCAG AA ✓ Pass

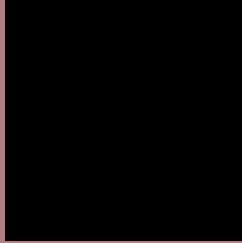
Any Text WCAG AA ✓ Pass

Large Text (above 18pt) WCAG AAA ✓ Pass

Any Text WCAG AAA × Fail

If you want to check with other color combinations, try the [Color Contrast Checker](#).

Decimal 11566980 Background



This preview shows how black text looks on a background with the Decimal color 11566980.




This preview shows how white text looks on a background with the Decimal color 11566980.

Color Blindness Simulation

Color vision deficiency is a very complex topic, and I could not describe the different causes any better than Wikipedia does, so if you want to learn more, you should check out their [article about color blindness](#).

Dichromacy





Tritanopia
11566728

Trichromacy



Original Color
11566980

Protanomaly
10192776

Deuteranomaly
10781827

Tritanomaly
11566727

Monochromacy



Original Color
11566980

Achromatopsia
9342606

Achromatomaly
10127754

CSS Examples

Text

The CSS property to change the color of the text to Decimal 11566980 is called "color". The color property can be set on classes, ids or directly on the HTML element.

This example shows how text in the color #B07F84 looks like.

```
.text, #text, p{  
  color:#B07F84  
}
```

If you want to add a text shadow in that color use the text-shadow property, you can generate a text shadow directly with our [CSS Text Shadow Generator](#).

Here you see how black text with a 4 pixel #B07F84 colored shadow looks like.

```
.shadow{ text-shadow: 4px 4px 2px #B07F84
}
```

Border

The CSS property to change the border of an element to Decimal 11566980 is called "border". The border property can be set on classes, ids or directly on the HTML element.

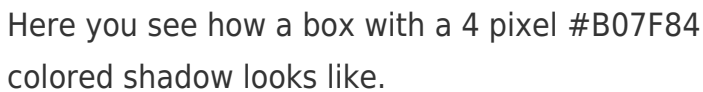
This example shows the color as border, it can be applied via the CSS property "border" or "border-color".

```
.border, #border, table{ border:4px solid
#B07F84 }
```

If only the border color should be changed use the property `border-color`.

```
.border{ border-color:#B07F84 }
```

If you want to add a box shadow in that color use:



Here you see how a box with a 4 pixel `#B07F84` colored shadow looks like.

```
.boxshadow{ -moz-box-shadow:4px 4px 4px  
4px #B07F84; -webkit-box-shadow:4px 4px  
4px 4px #B07F84; box-shadow:4px 4px 4px  
4px #B07F84 }
```

Background

The CSS property to change the background color of an element to Decimal 11566980 is called "background". The background property can be set on classes, ids or directly on the HTML element.

```
.background, #background, body{  
background:#B07F84 }
```

If only the background color should be changed can be used:

```
.background{ background-color:#B07F84 }
```

This example shows the color as background, it is applied via the CSS property "background".

To optimize and compress your CSS code, you can use our [online CSS compressor and optimizer](#) based on csstidy. If you want to create a linear or radial gradient as background or border, check our [CSS Gradient Generator](#).

Hey! You found this booklet interesting? Support Converting Colors with the new Membership Option!

The pro membership hides all ads, plus gives you double the colors in the color bucket, and more awesome pro features!

[Learn more, Memberships starting at \\$2.50/m!](#)

**Follow me
on Twitter!**

@ConvertingColor