

Converting Colors

Decimal(11569550)

Have a look what the booklet for
Decimal(11569550) contains.

Decimal(11569550)	3
<i>Conversions</i>	4
<i>Details</i>	6
<i>Harmonies</i>	11
<i>Previews</i>	23
<i>Color Blindness Simulation</i>	26
<i>CSS Examples</i>	29

Color

Decimal(11569550)

Conversions

Conversions Part 1

Format	Color
Hex	B0898E
RGB	176, 137, 142
RGB Percent	69%, 54%, 56%
CMY	0.3098, 0.4627, 0.4431
CMYK	0.00, 0.22, 0.19, 0.31
HSL	352°, 20%, 61%
HSV	352°, 22%, 69%
XYZ	31.7326, 29.0744, 29.5306
YIQ	149.2310, 21.6390, 9.8230

Conversions

Conversions Part 2

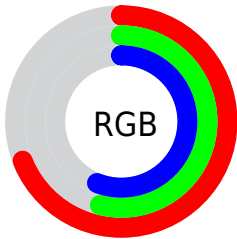
Format	Color
RYB	176, 137, 142
Decimal	11569550
CIELab	60.85, 15.63, 3.04
CIELCh	61, 15.918, 10.994
Yxy	29.0744, 0.3513, 0.3218
Android (android.graphics.Color)	4289759630 (0xFFB0898E)
YUV	149.2310, -3.5649, 23.4764
Hunter-Lab	53.9207, 10.6870, 5.2733

Details

The Decimal color **11569550** is a light color, and the websafe version is hex **CC9999**. A complement of this color would be **9023659**, and the grayscale version is **9803157**.

A 20% lighter version of the original color is **15253444**, and **8083292** is the 20% darker color. If you saturate the color by 10%, you get **11564927**, and if you desaturate by 10%, it is **11574173**.

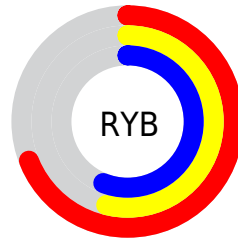
Distribution



Red (69%)

Green (54%)

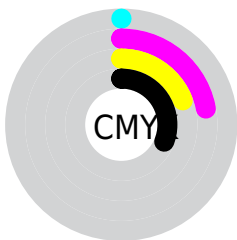
Blue (56%)



Red (69%)

Yellow (54%)

Blue (56%)

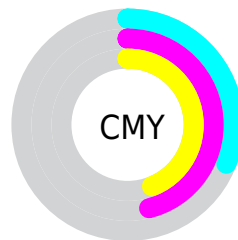


Cyan (0%)

Magenta (22%)

Yellow (19%)

Black (31%)



Cyan (31%)

Magenta (46%)

Yellow (44%)

Brightness & Saturation Gradients

These gradients show how the Decimal color 11569550 changes by changing the brightness by 10 percent. The first figure shows a shift by +10% for each color and the second figure -10%.

Similar to the brightness gradients but the following saturation gradients show a change of the Decimal color 11569550 by changing the saturation by 10% instead.

 11569550

 11569550

16777215

 9793396

 15253444

 8083292

 16767712

 6373188

 16775164

 4794670

 3216410

 2031616

 0

 11569550

 11569550

 11564927

 11574173

 11560559

 11578541

 11555936

 11583164

 11551569

 11587531

 11546945

 11592155

 11542322

 11596778

 11537955

 11599865

 11534359

 11599871

Harmonies

Analogous

The Analogous color harmony consists of three colors that are next to each other on the color wheel.



11111068



11569550



11504513

Triad

The Triadic color harmony groups three colors that are evenly spaced from another and form a triangle on the color wheel.



11569550



8951933



7903149

Complementary

The Complementary color scheme is a pair of colors which are on the opposite of each other on the color wheel.



11569550



9023659

Split Complementary

Split-complementary colors differ from the complementary color scheme. The scheme consists of three colors, the original color and two neighbors of the complement color.



7248549



11569550



7969417

Square

The Square scheme is like the rectangle color scheme, but the four colors are evenly spaced on the color wheel.



11569550



9999223



7314328



9081518

Rectangle

The Rectangle color scheme consists of four colors that form a rectangle on the color wheel.



11569550



11177339



7314328



7641259

Sweetspot

The Sweet Spot groups the original color and five complimentary colors.



11569550



15128023



11241904



7563883



15921906



7566195

Same Dimension

The Same Dimension uses a secret algorithm to generate beautiful new colors.



11569550



15116463



11573129



5853265



10027028



1703939

Inverse Universe

The Inverse Universe completely reimagines the original color for something new.



11569550



15116463



9020080



5853265



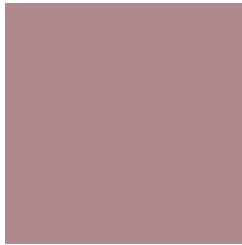
10027028



1703939

Previews

White Background



This preview shows how the Decimal color 11569550 looks on a white background.

Color Contrast Check

Large Text (above 18pt) WCAG AA ✓ Pass

Any Text WCAG AA × Fail

Large Text (above 18pt) WCAG AAA × Fail

Any Text WCAG AAA × Fail

Black Background



This preview shows how the Decimal color 11569550 looks on a black background.

Color Contrast Check

Large Text (above 18pt) WCAG AA ✓ Pass

Any Text WCAG AA ✓ Pass

Large Text (above 18pt) WCAG AAA ✓ Pass

Any Text WCAG AAA × Fail

If you want to check with other color combinations, try the [Color Contrast Checker](#).

Decimal 11569550 Background



This preview shows how black text looks on a background with the Decimal color 11569550.



This preview shows how white text looks on a background with the Decimal color 11569550.

Color Blindness Simulation

Color vision deficiency is a very complex topic, and I could not describe the different causes any better than Wikipedia does, so if you want to learn more, you should check out their [article about color blindness](#).

Dichromacy



Original Color


11569550

Protanopia

9802387

Deuteranopia

10718861



Tritanopia
11634835

Trichromacy



Original Color
11569550

Protanomaly
10456977

Deuteranomaly
11046029

Tritanomaly
11634833

Monochromacy



Original Color
11569550

Achromatopsia
9803157

Achromatomaly
10457490

CSS Examples

Text

The CSS property to change the color of the text to Decimal 11569550 is called "color". The color property can be set on classes, ids or directly on the HTML element.

This example shows how text in the color #B0898E looks like.

```
.text, #text, p{  
    color:#B0898E  
}
```

If you want to add a text shadow in that color use the text-shadow property, you can generate a text shadow directly with our [CSS Text Shadow Generator](#).

Here you see how black text with a 4 pixel #B0898E colored shadow looks like.

```
.shadow{ text-shadow: 4px 4px 2px #B0898E
}
```

Border

The CSS property to change the border of an element to Decimal 11569550 is called "border". The border property can be set on classes, ids or directly on the HTML element.

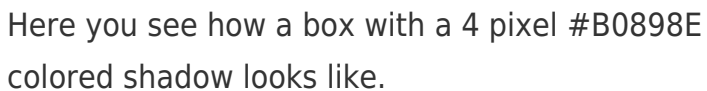
This example shows the color as border, it can be applied via the CSS property "border" or "border-color".

```
.border, #border, table{ border:4px solid
#B0898E }
```

If only the border color should be changed use the property border-color.

```
.border{ border-color:#B0898E }
```

If you want to add a box shadow in that color use:



Here you see how a box with a 4 pixel #B0898E colored shadow looks like.

```
.boxshadow{ -moz-box-shadow:4px 4px 4px  
4px #B0898E; -webkit-box-shadow:4px 4px  
4px 4px #B0898E; box-shadow:4px 4px 4px  
4px #B0898E }
```

Background

The CSS property to change the background color of an element to Decimal 11569550 is called "background". The background property can be set on classes, ids or directly on the HTML element.

```
.background, #background, body{  
background:#B0898E }
```

If only the background color should be changed can be used:

```
.background{ background-color:#B0898E }
```

This example shows the color as background, it is applied via the CSS property "background".

To optimize and compress your CSS code, you can use our [online CSS compressor and optimizer](#) based on csstidy. If you want to create a linear or radial gradient as background or border, check our [CSS Gradient Generator](#).

Hey! You found this booklet interesting? Support Converting Colors with the new Membership Option!

The pro membership hides all ads, plus gives you double the colors in the color bucket, and more awesome pro features!

[Learn more, Memberships starting at \\$2.50/m!](#)

**Follow me
on Twitter!**

@ConvertingColor