

Converting Colors

Decimal(11581622)

Have a look what the booklet for
Decimal(11581622) contains.

Decimal(11581622)	3
<i>Conversions</i>	4
<i>Details</i>	6
<i>Harmonies</i>	11
<i>Previews</i>	23
<i>Color Blindness Simulation</i>	26
<i>CSS Examples</i>	29

Color

Decimal(11581622)

Conversions

Conversions Part 1

Format	Color
Hex	B0B8B6
RGB	176, 184, 182
RGB Percent	69%, 72%, 71%
CMY	0.3098, 0.2784, 0.2863
CMYK	0.04, 0.00, 0.01, 0.28
HSL	165°, 5%, 71%
HSV	165°, 4%, 72%
XYZ	43.4885, 46.8885, 51.0143
YIQ	181.3800, -4.1260, -2.3180

Conversions

Conversions Part 2

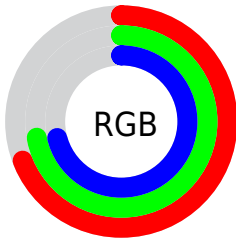
Format	Color
RYB	176, 181, 184
Decimal	11581622
CIELab	74.12, -3.16, 0.04
CIElCh	74, 3.157, 179.276
Yxy	46.8885, 0.3076, 0.3316
Android (android.graphics.Color)	4289771702 (0xFFB0B8B6)
YUV	181.3800, 0.3057, -4.7183
Hunter-Lab	68.4752, -6.4664, 3.7613

Details

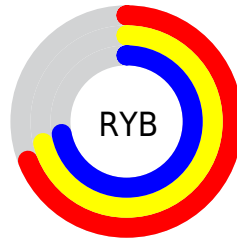
The Decimal color **11581622** is a light color, and the websafe version is hex **CCCCCC**. A complement of this color would be **12103858**, and the grayscale version is **11908533**.

A 20% lighter version of the original color is **15266030**, and **8160129** is the 20% darker color. If you saturate the color by 10%, you get **10401969**, and if you desaturate by 10%, it is **12761275**.

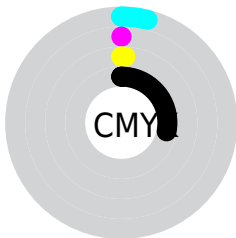
Distribution



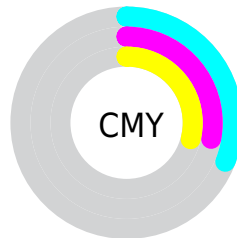
- Red (69%)
- Green (72%)
- Blue (71%)



- Red (69%)
- Yellow (71%)
- Blue (72%)



- Cyan (4%)
- Magenta (0%)
- Yellow (1%)
- Black (28%)



- Cyan (31%)
- Magenta (28%)
- Yellow (29%)

Brightness & Saturation Gradients

These gradients show how the Decimal color 11581622 changes by changing the brightness by 10 percent. The first figure shows a shift by +10% for each color and the second figure -10%.

Similar to the brightness gradients but the following saturation gradients show a change of the Decimal color 11581622 by changing the saturation by 10% instead.

■ 11581622

16777215

■ 15266030

■ 11581622

■ 9805211

■ 8160129

■ 6515304

■ 4936272

■ 3423033

■ 2041124

■ 462862

■ 0

■ 11581622

■ 11581622

10401969

12761275

9156781

14006463

7977128

15186116

6731940

16431304

5552287

16758989

4372634

16758994

3127446

16758998

1947793

16759003

702605

16759007

Harmonies

Analogous

The Analogous color harmony consists of three colors that are next to each other on the color wheel.



11712691



11581622



11516089

Triad

The Triadic color harmony groups three colors that are evenly spaced from another and form a triangle on the color wheel.



11581622



12039611



12367281

Complementary

The Complementary color scheme is a pair of colors which are on the opposite of each other on the color wheel.



11581622



12103858

Split Complementary

Split-complementary colors differ from the complementary color scheme. The scheme consists of three colors, the original color and two neighbors of the complement color.



12432563



11581622



12236217

Square

The Square scheme is like the rectangle color scheme, but the four colors are evenly spaced on the color wheel.



11581622



11777724



12367030



12170928

Rectangle

The Rectangle color scheme consists of four colors that form a rectangle on the color wheel.



11581622



11581626



12367030



12367282

Sweetspot

The Sweet Spot groups the original color and five complimentary colors.



11581622



15593711



11712688



7829624



16250871



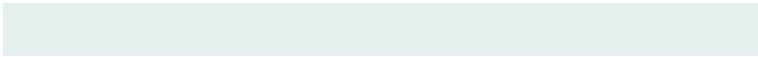
7895160

Same Dimension

The Same Dimension uses a secret algorithm to generate beautiful new colors.



11581622



15003885



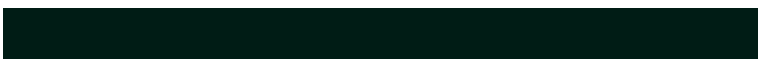
11581112



5659738



40053



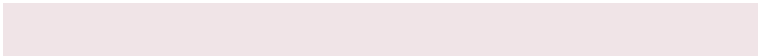
7189

Inverse Universe

The Inverse Universe completely reimagines the original color for something new.



12103858



15787239



12104368



6051416



10223655



1835015

Previews

White Background



This preview shows how the Decimal color 11581622 looks on a white background.

Color Contrast Check

Large Text (above 18pt) WCAG AA × Fail

Any Text WCAG AA × Fail

Large Text (above 18pt) WCAG AAA × Fail

Any Text WCAG AAA × Fail

Black Background



This preview shows how the Decimal color 11581622 looks on a black background.

Color Contrast Check

Large Text (above 18pt) WCAG AA ✓ Pass

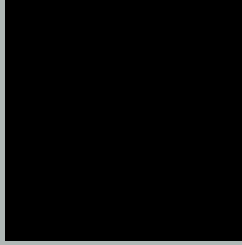
Any Text WCAG AA ✓ Pass

Large Text (above 18pt) WCAG AAA ✓ Pass

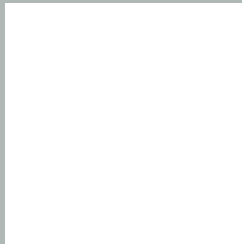
Any Text WCAG AAA ✓ Pass

If you want to check with other color combinations, try the [Color Contrast Checker](#).

Decimal 11581622 Background



This preview shows how black text looks on a background with the Decimal color 11581622.



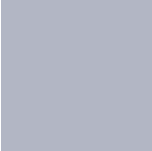
This preview shows how white text looks on a background with the Decimal color 11581622.

Color Blindness Simulation

Color vision deficiency is a very complex topic, and I could not describe the different causes any better than Wikipedia does, so if you want to learn more, you should check out their [article about color blindness](#).

Dichromacy





Tritanopia
11712196

Trichromacy



Original Color
11581622

Protanomaly
11974325

Deuteranomaly
12563383

Tritanomaly
11646911

Monochromacy



Original Color
11581622

Achromatopsia
11908533

Achromatomaly
11777717

CSS Examples

Text

The CSS property to change the color of the text to Decimal 11581622 is called "color". The color property can be set on classes, ids or directly on the HTML element.

This example shows how text in the color #B0B8B6 looks like.

```
.text, #text, p{  
  color:#B0B8B6  
}
```

If you want to add a text shadow in that color use the text-shadow property, you can generate a text shadow directly with our [CSS Text Shadow Generator](#).

Here you see how black text with a 4 pixel #B0B8B6 colored shadow looks like.

```
.shadow{ text-shadow: 4px 4px 2px #B0B8B6
}
```

Border

The CSS property to change the border of an element to Decimal 11581622 is called "border". The border property can be set on classes, ids or directly on the HTML element.

This example shows the color as border, it can be applied via the CSS property "border" or "border-color".

```
.border, #border, table{ border:4px solid
#B0B8B6 }
```

If only the border color should be changed use the property `border-color`.

```
.border{ border-color:#B0B8B6 }
```

If you want to add a box shadow in that color use:

Here you see how a box with a 4 pixel #B0B8B6 colored shadow looks like.

```
.boxshadow{ -moz-box-shadow:4px 4px 4px  
4px #B0B8B6; -webkit-box-shadow:4px 4px  
4px 4px #B0B8B6; box-shadow:4px 4px 4px  
4px #B0B8B6 }
```

Background

The CSS property to change the background color of an element to Decimal 11581622 is called "background". The background property can be set on classes, ids or directly on the HTML element.

```
.background, #background, body{  
background:#B0B8B6 }
```

If only the background color should be changed can be used:

```
.background{ background-color:#B0B8B6 }
```

This example shows the color as background, it is applied via the CSS property "background".

To optimize and compress your CSS code, you can use our [online CSS compressor and optimizer](#) based on csstidy. If you want to create a linear or radial gradient as background or border, check our [CSS Gradient Generator](#).

Hey! You found this booklet interesting? Support Converting Colors with the new Membership Option!

The pro membership hides all ads, plus gives you double the colors in the color bucket, and more awesome pro features!

[Learn more, Memberships starting at \\$2.50/m!](#)

**Follow me
on Twitter!**

@ConvertingColor