

Converting Colors

Decimal(11621458)

Have a look what the booklet for
Decimal(11621458) contains.

Decimal(11621458)	3
<i>Conversions</i>	4
<i>Details</i>	6
<i>Harmonies</i>	11
<i>Previews</i>	23
<i>Color Blindness Simulation</i>	26
<i>CSS Examples</i>	29

Color

Decimal(11621458)

Conversions

Conversions Part 1

Format	Color
Hex	B15452
RGB	177, 84, 82
RGB Percent	69%, 33%, 32%
CMY	0.3059, 0.6706, 0.6784
CMYK	0.00, 0.53, 0.54, 0.31
HSL	1°, 38%, 51%
HSV	1°, 54%, 69%
XYZ	22.8248, 16.2970, 9.9253
YIQ	111.5790, 56.0700, 19.0940

Conversions

Conversions Part 2

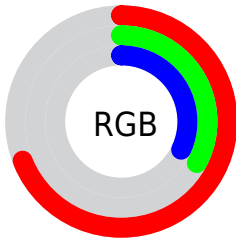
Format	Color
R_{YB}	177, 84, 82
Decimal	11621458
CIE _{Lab}	47.36, 37.67, 19.23
CIE _{LCh}	47, 42.300, 27.047
Yxy	16.2970, 0.4654, 0.3323
Android (android.graphics.Color)	4289811538 (0xFFB15452)
YUV	111.5790, -14.5824, 57.3742
Hunter-Lab	40.3695, 30.2767, 13.6816

Details

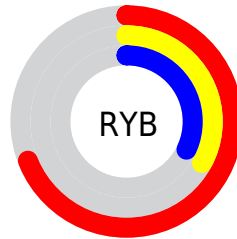
The Decimal color **11621458** is a dark color, and the websafe version is hex **CC6666**. A complement of this color would be **5418929**, and the grayscale version is **7368816**.

A 20% lighter version of the original color is **15501443**, and **7872805** is the 20% darker color. If you saturate the color by 10%, you get **11617088**, and if you desaturate by 10%, it is **11625828**.

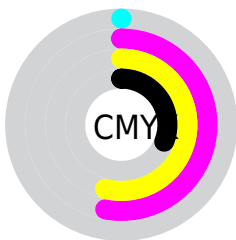
Distribution



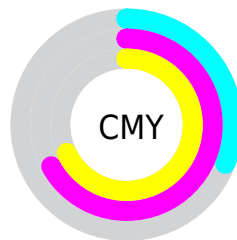
- Red (69%)
- Green (33%)
- Blue (32%)



- Red (69%)
- Yellow (33%)
- Blue (32%)



- Cyan (0%)
- Magenta (53%)
- Yellow (54%)
- Black (31%)



- Cyan (31%)
- Magenta (67%)
- Yellow (68%)

Brightness & Saturation Gradients

These gradients show how the Decimal color 11621458 changes by changing the brightness by 10 percent. The first figure shows a shift by +10% for each color and the second figure -10%.

Similar to the brightness gradients but the following saturation gradients show a change of the Decimal color 11621458 by changing the saturation by 10% instead.

 11621458

 11621458

16777215

 9714491

 15501443

 7872805

 16753565

 6030097

 16760760

 4259840

 16767956


 2621441

 16775408

 0

 11621458

 11621458

 11617088

 11625828

 11612463

 11630453

 11608093

 11634823

 11603723

 11639193

 11600896

 11643819

 11648188

 11652558

 11657184

 11661553

Harmonies

Analogous

The Analogous color harmony consists of three colors that are next to each other on the color wheel.



11489653



11621458



10641461

Triad

The Triadic color harmony groups three colors that are evenly spaced from another and form a triangle on the color wheel.



11621458



3571528



816567

Complementary

The Complementary color scheme is a pair of colors which are on the opposite of each other on the color wheel.



11621458



5418929

Split Complementary

Split-complementary colors differ from the complementary color scheme. The scheme consists of three colors, the original color and two neighbors of the complement color.



32427



11621458



33388

Square

The Square scheme is like the rectangle color scheme, but the four colors are evenly spaced on the color wheel.



11621458



6584365



33424



7104688

Rectangle

The Rectangle color scheme consists of four colors that form a rectangle on the color wheel.



11621458



9529640



33424



31157

Sweetspot

The Sweet Spot groups the original color and five complimentary colors.



11621458



15123137



11621039



7560541



15921906



7566195

Same Dimension

The Same Dimension uses a secret algorithm to generate beautiful new colors.



11621458



15095379



11633490



5853520



10027776



1704192

Inverse Universe

The Inverse Universe completely reimagines the original color for something new.



5418929



5497574



5406897



5265753



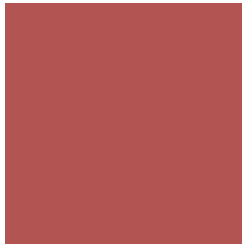
38553



6426

Previews

White Background



This preview shows how the Decimal color 11621458 looks on a white background.

Color Contrast Check

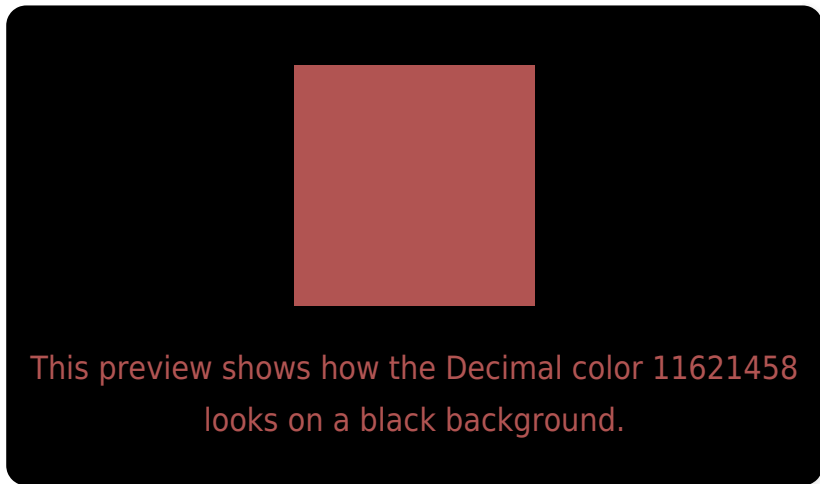
Large Text (above 18pt) WCAG AA ✓ Pass

Any Text WCAG AA ✓ Pass

Large Text (above 18pt) WCAG AAA ✓ Pass

Any Text WCAG AAA × Fail

Black Background



Color Contrast Check

Large Text (above 18pt) WCAG AA ✓ Pass

Any Text WCAG AA × Fail

Large Text (above 18pt) WCAG AAA × Fail

Any Text WCAG AAA × Fail

If you want to check with other color combinations, try the [Color Contrast Checker](#).

Decimal 11621458 Background



This preview shows how black text looks on a background with the Decimal color 11621458.

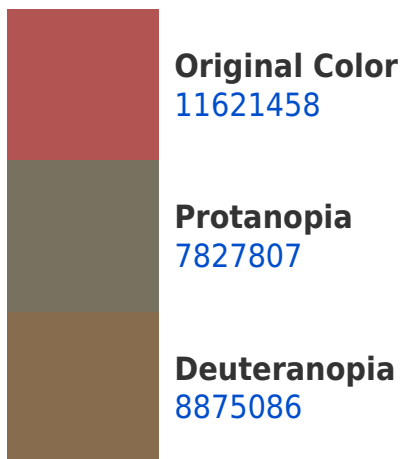


This preview shows how white text looks on a background with the Decimal color 11621458.

Color Blindness Simulation

Color vision deficiency is a very complex topic, and I could not describe the different causes any better than Wikipedia does, so if you want to learn more, you should check out their [article about color blindness](#).

Dichromacy



Trichromacy



Original Color
11621458

Protanomaly
9201242

Deuteranomaly
9855823

Tritanomaly
11621206

Monochromacy



Original Color
11621458

Achromatopsia
7368816

Achromatomaly
8939109

CSS Examples

Text

The CSS property to change the color of the text to Decimal 11621458 is called "color". The color property can be set on classes, ids or directly on the HTML element.

This example shows how text in the color #B15452 looks like.

```
.text, #text, p{  
    color:#B15452  
}
```

If you want to add a text shadow in that color use the text-shadow property, you can generate a text shadow directly with our [CSS Text Shadow Generator](#).

Here you see how black text with a 4 pixel #B15452 colored shadow looks like.

```
.shadow{ text-shadow: 4px 4px 2px #B15452
}
```

Border

The CSS property to change the border of an element to Decimal 11621458 is called "border". The border property can be set on classes, ids or directly on the HTML element.

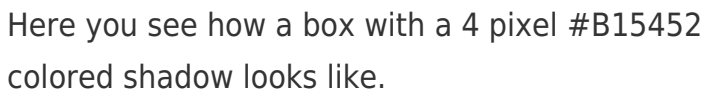
This example shows the color as border, it can be applied via the CSS property "border" or "border-color".

```
.border, #border, table{ border:4px solid
#B15452 }
```

If only the border color should be changed use the property `border-color`.

```
.border{ border-color:#B15452 }
```

If you want to add a box shadow in that color use:



Here you see how a box with a 4 pixel #B15452 colored shadow looks like.

```
.boxshadow{ -moz-box-shadow:4px 4px 4px  
4px #B15452; -webkit-box-shadow:4px 4px  
4px 4px #B15452; box-shadow:4px 4px 4px  
4px #B15452 }
```

Background

The CSS property to change the background color of an element to Decimal 11621458 is called "background". The background property can be set on classes, ids or directly on the HTML element.

```
.background, #background, body{  
background:#B15452 }
```

If only the background color should be changed can be used:

```
.background{ background-color:#B15452 }
```

This example shows the color as background, it is applied via the CSS property "background".

To optimize and compress your CSS code, you can use our [online CSS compressor and optimizer](#) based on csstidy. If you want to create a linear or radial gradient as background or border, check our [CSS Gradient Generator](#).

Hey! You found this booklet
interesting? Support Converting
Colors with the new Membership
Option!

The pro membership hides all ads, plus gives you
double the colors in the color bucket, and more
awesome pro features!

[Learn more, Memberships starting at \\$2.50/m!](#)

**Follow me
on Twitter!**

@ConvertingColor