

Converting Colors

Decimal(11629437)

Have a look what the booklet for
Decimal(11629437) contains.

Decimal(11629437)	3
<i>Conversions</i>	4
<i>Details</i>	6
<i>Harmonies</i>	11
<i>Previews</i>	23
<i>Color Blindness Simulation</i>	26
<i>CSS Examples</i>	29

Color

Decimal(11629437)

Conversions

Conversions Part 1

Format	Color
Hex	B1737D
RGB	177, 115, 125
RGB Percent	69%, 45%, 49%
CMY	0.3059, 0.5490, 0.5098
CMYK	0.00, 0.35, 0.29, 0.31
HSL	350°, 28%, 57%
HSV	350°, 35%, 69%
XYZ	27.9639, 23.0892, 22.3849
YIQ	134.6780, 33.7420, 16.2540

Conversions

Conversions Part 2

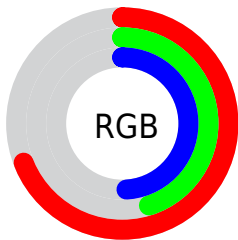
Format	Color
R_{YB}	177, 115, 125
Decimal	11629437
CIE Lab	55.16, 25.81, 4.66
CIE LCh	55, 26.224, 10.229
Yxy	23.0892, 0.3808, 0.3144
Android (android.graphics.Color)	4289819517 (0xFFB1737D)
YUV	134.6780, -4.7713, 37.1164
Hunter-Lab	48.0513, 19.7899, 6.0154

Details

The Decimal color **11629437** is a dark color, and the websafe version is hex **996666**. A complement of this color would be **7582119**, and the grayscale version is **8882055**.

A 20% lighter version of the original color is **15378610**, and **8077900** is the 20% darker color. If you saturate the color by 10%, you get **11624814**, and if you desaturate by 10%, it is **11634060**.

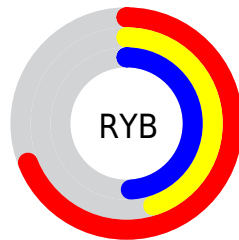
Distribution



Red (69%)

Green (45%)

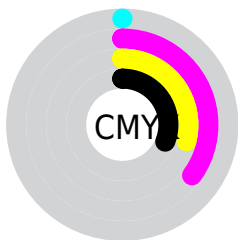
Blue (49%)



Red (69%)

Yellow (45%)

Blue (49%)

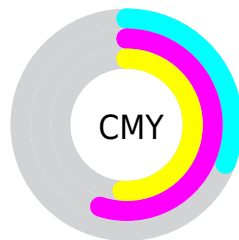


Cyan (0%)

Magenta (35%)

Yellow (29%)

Black (31%)



Cyan (31%)

Magenta (55%)

Yellow (51%)

Brightness & Saturation Gradients

These gradients show how the Decimal color 11629437 changes by changing the brightness by 10 percent. The first figure shows a shift by +10% for each color and the second figure -10%.

Similar to the brightness gradients but the following saturation gradients show a change of the Decimal color 11629437 by changing the saturation by 10% instead.

 11629437  11629437

16777215  9788004

 15378610  8077900

 16761805  6367798


 16769001  4658208

 16776447  3145737

 851968

 0

 11629437  11629437

 11624814  11634060

11620447

11638427

11615824

11643050

11611202

11647672

11606579

11652039

11602212

11656662

11599901

11661285

11665396

11665407

Harmonies

Analogous

The Analogous color harmony consists of three colors that are next to each other on the color wheel.



10974612



11629437



11433576

Triad

The Triadic color harmony groups three colors that are evenly spaced from another and form a triangle on the color wheel.



11629437



7572321



5213102

Complementary

The Complementary color scheme is a pair of colors which are on the opposite of each other on the color wheel.



11629437



7582119

Split Complementary

Split-complementary colors differ from the complementary color scheme. The scheme consists of three colors, the original color and two neighbors of the complement color.



3772321



11629437



5803892

Square

The Square scheme is like the rectangle color scheme, but the four colors are evenly spaced on the color wheel.



11629437



9209175



4231563



7505072

Rectangle

The Rectangle color scheme consists of four colors that form a rectangle on the color wheel.



11629437



10910557



4231563



4623531

Sweetspot

The Sweet Spot groups the original color and five complimentary colors.



11629437



15125712



10974129



7562342



15921906



7566195

Same Dimension

The Same Dimension uses a secret algorithm to generate beautiful new colors.



11629437



15107477



11634803



5853266



10027033



1703940

Inverse Universe

The Inverse Universe completely reimagines the original color for something new.



11629437



15107477



7576753



5853266



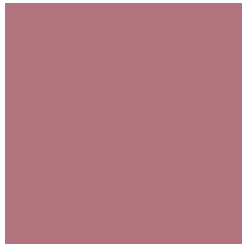
10027033



1703940

Previews

White Background



This preview shows how the Decimal color 11629437 looks on a white background.

Color Contrast Check

Large Text (above 18pt) WCAG AA ✓ Pass

Any Text WCAG AA × Fail

Large Text (above 18pt) WCAG AAA × Fail

Any Text WCAG AAA × Fail

Black Background



This preview shows how the Decimal color 11629437 looks on a black background.

Color Contrast Check

Large Text (above 18pt) WCAG AA ✓ Pass

Any Text WCAG AA ✓ Pass

Large Text (above 18pt) WCAG AAA ✓ Pass

Any Text WCAG AAA × Fail

If you want to check with other color combinations, try the [Color Contrast Checker](#).

Decimal 11629437 Background



This preview shows how black text looks on a background with the Decimal color 11629437.




This preview shows how white text looks on a background with the Decimal color 11629437.

Color Blindness Simulation

Color vision deficiency is a very complex topic, and I could not describe the different causes any better than Wikipedia does, so if you want to learn more, you should check out their [article about color blindness](#).

Dichromacy





Tritanopia
11629436

Trichromacy



Original Color
11629437

Protanomaly
9862787

Deuteranomaly
10451836

Tritanomaly
11629436

Monochromacy



Original Color
11629437

Achromatopsia
8882055

Achromatomaly
9863299

CSS Examples

Text

The CSS property to change the color of the text to Decimal 11629437 is called "color". The color property can be set on classes, ids or directly on the HTML element.

This example shows how text in the color #B1737D looks like.

```
.text, #text, p{  
    color:#B1737D  
}
```

If you want to add a text shadow in that color use the text-shadow property, you can generate a text shadow directly with our [CSS Text Shadow Generator](#).

Here you see how black text with a 4 pixel #B1737D colored shadow looks like.

```
.shadow{ text-shadow: 4px 4px 2px #B1737D
}
```

Border

The CSS property to change the border of an element to Decimal 11629437 is called "border". The border property can be set on classes, ids or directly on the HTML element.

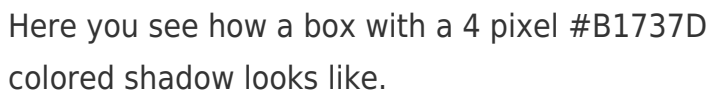
This example shows the color as border, it can be applied via the CSS property "border" or "border-color".

```
.border, #border, table{ border:4px solid
#B1737D }
```

If only the border color should be changed use the property `border-color`.

```
.border{ border-color:#B1737D }
```

If you want to add a box shadow in that color use:



Here you see how a box with a 4 pixel #B1737D colored shadow looks like.

```
.boxshadow{ -moz-box-shadow:4px 4px 4px  
4px #B1737D; -webkit-box-shadow:4px 4px  
4px 4px #B1737D; box-shadow:4px 4px 4px  
4px #B1737D }
```

Background

The CSS property to change the background color of an element to Decimal 11629437 is called "background". The background property can be set on classes, ids or directly on the HTML element.

```
.background, #background, body{  
background:#B1737D }
```

If only the background color should be changed can be used:

```
.background{ background-color:#B1737D }
```

This example shows the color as background, it is applied via the CSS property "background".

To optimize and compress your CSS code, you can use our [online CSS compressor and optimizer](#) based on csstidy. If you want to create a linear or radial gradient as background or border, check our [CSS Gradient Generator](#).

Hey! You found this booklet interesting? Support Converting Colors with the new Membership Option!

The pro membership hides all ads, plus gives you double the colors in the color bucket, and more awesome pro features!

[Learn more, Memberships starting at \\$2.50/m!](#)

**Follow me
on Twitter!**

@ConvertingColor