

# Converting Colors

Decimal(11630958)

Have a look what the booklet for  
Decimal(11630958) contains.

<b>Decimal(11630958)</b> .....	3
<i><b>Conversions</b></i> .....	4
<i><b>Details</b></i> .....	6
<i><b>Harmonies</b></i> .....	11
<i><b>Previews</b></i> .....	23
<i><b>Color Blindness Simulation</b></i> .....	26
<i><b>CSS Examples</b></i> .....	29

**Color**

**Decimal(11630958)**

# Conversions

## Conversions Part 1

<b>Format</b>	<b>Color</b>
Hex	<a href="#">B1796E</a>
RGB	<a href="#">177, 121, 110</a>
RGB Percent	<a href="#">69%, 47%, 43%</a>
CMY	<a href="#">0.3059, 0.5255, 0.5686</a>
CMYK	<a href="#">0.00, 0.32, 0.38, 0.31</a>
HSL	<a href="#">10°, 30%, 56%</a>
HSV	<a href="#">10°, 38%, 69%</a>
XYZ	<a href="#">27.7833, 24.1476, 17.9485</a>
YIQ	<a href="#">136.4900, 36.9070, 8.4510</a>

# Conversions

## Conversions Part 2

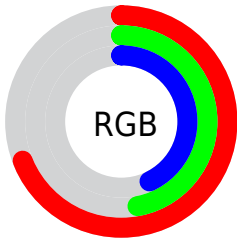
<b>Format</b>	<b>Color</b>
<b>R<sub>YB</sub></b>	177, 123, 110
Decimal	11630958
CIE Lab	56.24, 20.47, 14.88
CIE LCh	56, 25.311, 36.015
Yxy	24.1476, 0.3976, 0.3456
Android (android.graphics.Color)	4289821038 (0xFFB1796E)
YUV	136.4900, -13.0596, 35.5273
Hunter-Lab	49.1403, 14.9263, 12.7425

# Details

The Decimal color **11630958** is a dark color, and the websafe version is hex **996666**. A complement of this color would be **7251633**, and the grayscale version is **9013641**.

A 20% lighter version of the original color is **15380130**, and **8013886** is the 20% darker color. If you saturate the color by 10%, you get **11627100**, and if you desaturate by 10%, it is **11634816**.

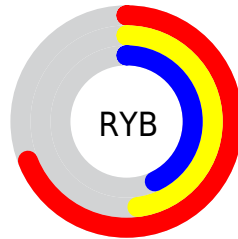
# Distribution



Red (69%)

Green (47%)

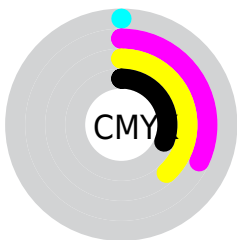
Blue (43%)



Red (69%)

Yellow (48%)

Blue (43%)

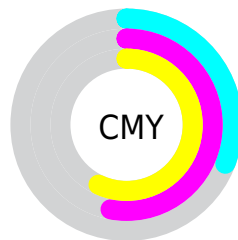


Cyan (0%)

Magenta (32%)

Yellow (38%)

Black (31%)



Cyan (31%)

Magenta (53%)


Yellow (57%)

# Brightness & Saturation Gradients

These gradients show how the Decimal color 11630958 changes by changing the brightness by 10 percent. The first figure shows a shift by +10% for each color and the second figure -10%.

Similar to the brightness gradients but the following saturation gradients show a change of the Decimal color 11630958 by changing the saturation by 10% instead.



 11630958

 11630958

16777215

 9789526

 15380130

 8013886

 16763325

 6304040

 16770520

 4659988

 16777205

 3081216

 720896

 0

 11630958

 11630958

 11627100

 11634816

11623243

11638673

11619641

11642275

11615783

11646133

11611926

11649991

11608068

11653848

11607296

11657706

11661308

11665151

# Harmonies

## Analogous

The Analogous color harmony consists of three colors that are next to each other on the color wheel.



11695747



11630958



10846047

# Triad

The Triadic color harmony groups three colors that are evenly spaced from another and form a triangle on the color wheel.



11630958



6328692



7440306

# Complementary

The Complementary color scheme is a pair of colors which are on the opposite of each other on the color wheel.



11630958



7251633

# Split Complementary

Split-complementary colors differ from the complementary color scheme. The scheme consists of three colors, the original color and two neighbors of the complement color.



5344942



11630958



4821899

# Square

The Square scheme is like the rectangle color scheme, but the four colors are evenly spaced on the color wheel.



11630958



8031587



4231840



9470122

# Rectangle

The Rectangle color scheme consists of four colors that form a rectangle on the color wheel.



11630958



10060891



4231840



6720178



# Sweetspot

The Sweet Spot groups the original color and five complimentary colors.



11630958



15126732



11628199



7562852



15921906



7566195



# Same Dimension

The Same Dimension uses a secret algorithm to generate beautiful new colors.



11630958



15110014



11639406



5853776



10033408



1704960



# Inverse Universe

The Inverse Universe completely reimagines the original color for something new.



7251633



8312294



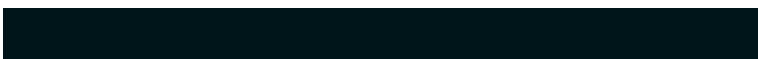
7243185



5265497



32921



5402



# Previews

## White Background



This preview shows how the Decimal color 11630958 looks on a white background.

## Color Contrast Check

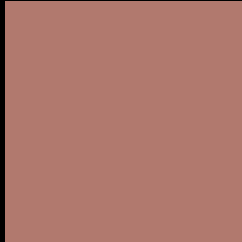
Large Text (above 18pt) WCAG AA ✓ Pass

Any Text WCAG AA × Fail

Large Text (above 18pt) WCAG AAA × Fail

Any Text WCAG AAA × Fail

# Black Background



This preview shows how the Decimal color 11630958 looks on a black background.

## Color Contrast Check

Large Text (above 18pt) WCAG AA ✓ Pass

Any Text WCAG AA ✓ Pass

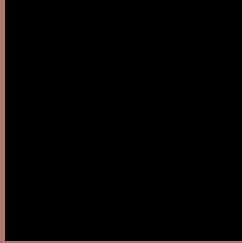
Large Text (above 18pt) WCAG AAA ✓ Pass

Any Text WCAG AAA × Fail

If you want to check with other color combinations, try the [Color Contrast Checker](#).



## Decimal 11630958 Background



This preview shows how black text looks on a background with the Decimal color 11630958.

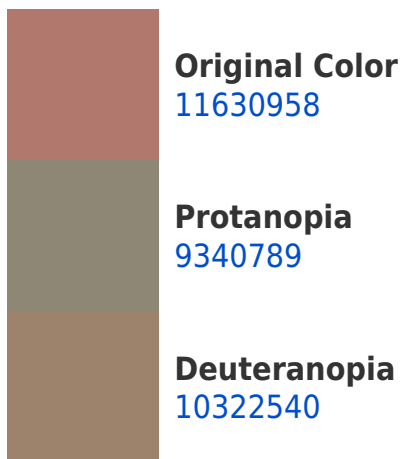


This preview shows how white text looks on a background with the Decimal color 11630958.

# Color Blindness Simulation

Color vision deficiency is a very complex topic, and I could not describe the different causes any better than Wikipedia does, so if you want to learn more, you should check out their [article about color blindness](#).

## Dichromacy





**Tritanopia**  
11761279

# Trichromacy



**Original Color**  
11630958

**Protanomaly**  
10191474

**Deuteranomaly**  
10780525

**Tritanomaly**  
11695993

# Monochromacy



**Original Color**  
11630958

**Achromatopsia**  
8947848

**Achromatomaly**  
9929599

# CSS Examples

## Text

The CSS property to change the color of the text to Decimal 11630958 is called "color". The color property can be set on classes, ids or directly on the HTML element.

This example shows how text in the color #B1796E looks like.

```
.text, #text, p{  
    color:#B1796E  
}
```

If you want to add a text shadow in that color use the text-shadow property, you can generate a text shadow directly with our [CSS Text Shadow Generator](#).

Here you see how black text with a 4 pixel #B1796E colored shadow looks like.

```
.shadow{ text-shadow: 4px 4px 2px #B1796E
}
```

## Border

The CSS property to change the border of an element to Decimal 11630958 is called "border". The border property can be set on classes, ids or directly on the HTML element.

This example shows the color as border, it can be applied via the CSS property "border" or "border-color".

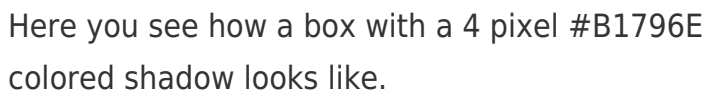
```
.border, #border, table{ border:4px solid
#B1796E }
```

If only the border color should be changed use the property `border-color`.

```
.border{ border-color:#B1796E }
```

If you want to add a box shadow in that color use:

Here you see how a box with a 4 pixel #B1796E colored shadow looks like.



```
.boxshadow{ -moz-box-shadow:4px 4px 4px  
4px #B1796E; -webkit-box-shadow:4px 4px  
4px 4px #B1796E; box-shadow:4px 4px 4px  
4px #B1796E }
```

# Background

The CSS property to change the background color of an element to Decimal 11630958 is called "background". The background property can be set on classes, ids or directly on the HTML element.

```
.background, #background, body{  
background:#B1796E }
```

If only the background color should be changed can be used:

```
.background{ background-color:#B1796E }
```

This example shows the color as background, it is applied via the CSS property "background".

To optimize and compress your CSS code, you can use our [online CSS compressor and optimizer](#) based on csstidy. If you want to create a linear or radial gradient as background or border, check our [CSS Gradient Generator](#).



Hey! You found this booklet interesting? Support Converting Colors with the new Membership Option!

The pro membership hides all ads, plus gives you double the colors in the color bucket, and more awesome pro features!

**[Learn more, Memberships starting at \\$2.50/m!](#)**

**Follow me  
on Twitter!**

@ConvertingColor