

Converting Colors

Decimal(11634054)

Have a look what the booklet for
Decimal(11634054) contains.

Decimal(11634054)	3
<i>Conversions</i>	4
<i>Details</i>	6
<i>Harmonies</i>	11
<i>Previews</i>	23
<i>Color Blindness Simulation</i>	26
<i>CSS Examples</i>	29

Color

Decimal(11634054)

Conversions

Conversions Part 1

Format	Color
Hex	B18586
RGB	177, 133, 134
RGB Percent	69%, 52%, 53%
CMY	0.3059, 0.4784, 0.4745
CMYK	0.00, 0.25, 0.24, 0.31
HSL	359°, 22%, 61%
HSV	359°, 25%, 69%
XYZ	30.8221, 27.8434, 26.3041
YIQ	146.2700, 25.9030, 9.6390

Conversions

Conversions Part 2

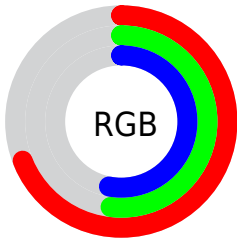
Format	Color
RYB	177, 133, 134
Decimal	11634054
CIELab	59.75, 17.02, 6.04
CIElCh	60, 18.057, 19.530
Yxy	27.8434, 0.3627, 0.3277
Android (android.graphics.Color)	4289824134 (0xFFB18586)
YUV	146.2700, -6.0491, 26.9502
Hunter-Lab	52.7668, 11.9231, 7.3810

Details

The Decimal color **11634054** is a light color, and the websafe version is hex **CC9999**. A complement of this color would be **8761776**, and the grayscale version is **9605778**.

A 20% lighter version of the original color is **15317691**, and **8082260** is the 20% darker color. If you saturate the color by 10%, you get **11629429**, and if you desaturate by 10%, it is **11638679**.

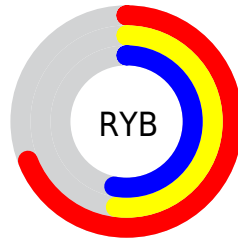
Distribution



Red (69%)

Green (52%)

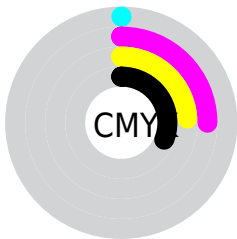
Blue (53%)



Red (69%)

Yellow (52%)

Blue (53%)

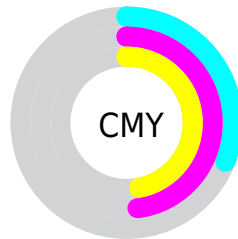


Cyan (0%)

Magenta (25%)

Yellow (24%)

Black (31%)



Cyan (31%)

Magenta (48%)

Yellow (47%)

Brightness & Saturation Gradients

These gradients show how the Decimal color 11634054 changes by changing the brightness by 10 percent. The first figure shows a shift by +10% for each color and the second figure -10%.

Similar to the brightness gradients but the following saturation gradients show a change of the Decimal color 11634054 by changing the saturation by 10% instead.

 11634054

 11634054

16777215

 9858157

 15317691

 8082260

 16766679

 6437949

 16774131

 4793896

 3215379

 1900545

 0

 11634054

 11634054

 11629429

 11638679

 11625059

 11643049

 11620434

 11647674

 11615809

 11652299

 11611440

 11656924

 11606814

 11661294

 11602189

 11665407

 11599876

Harmonies

Analogous

The Analogous color harmony consists of three colors that are next to each other on the color wheel.



11306390



11634054



11372664

Triad

The Triadic color harmony groups three colors that are evenly spaced from another and form a triangle on the color wheel.



11634054



8361595



7771055

Complementary

The Complementary color scheme is a pair of colors which are on the opposite of each other on the color wheel.



11634054



8761776

Split Complementary

Split-complementary colors differ from the complementary color scheme. The scheme consists of three colors, the original color and two neighbors of the complement color.



6789031



11634054



7248266

Square

The Square scheme is like the rectangle color scheme, but the four colors are evenly spaced on the color wheel.



11634054



9540210



6658458



9146030

Rectangle

The Rectangle color scheme consists of four colors that form a rectangle on the color wheel.



11634054



10914675



6658458



7378349

Sweetspot

The Sweet Spot groups the original color and five complimentary colors.



11634054



15128022



11568561



7563882



15921906



7566195

Same Dimension

The Same Dimension uses a secret algorithm to generate beautiful new colors.



11634054



15114658



11639429



5853265



10027011



1703937

Inverse Universe

The Inverse Universe completely reimagines the original color for something new.



11634054



15114658



8756401



5853265



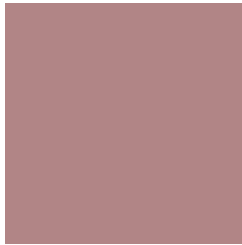
10027011



1703937

Previews

White Background



This preview shows how the Decimal color 11634054 looks on a white background.

Color Contrast Check

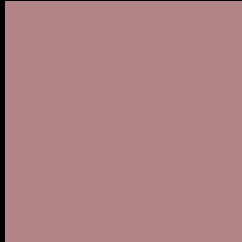
Large Text (above 18pt) WCAG AA ✓ Pass

Any Text WCAG AA ✗ Fail

Large Text (above 18pt) WCAG AAA ✗ Fail

Any Text WCAG AAA ✗ Fail

Black Background



This preview shows how the Decimal color 11634054 looks on a black background.

Color Contrast Check

Large Text (above 18pt) WCAG AA ✓ Pass

Any Text WCAG AA ✓ Pass

Large Text (above 18pt) WCAG AAA ✓ Pass

Any Text WCAG AAA × Fail

If you want to check with other color combinations, try the [Color Contrast Checker](#).

Decimal 11634054 Background



This preview shows how black text looks on a background with the Decimal color 11634054.



This preview shows how white text looks on a background with the Decimal color 11634054.

Color Blindness Simulation

Color vision deficiency is a very complex topic, and I could not describe the different causes any better than Wikipedia does, so if you want to learn more, you should check out their [article about color blindness](#).


Dichromacy



Original Color
11634054

Protanopia
9736332

Deuteranopia
10652549



Tritanopia
11699342

Trichromacy



Original Color
11634054

Protanomaly
10456202

Deuteranomaly
10979717

Tritanomaly
11699339

Monochromacy



Original Color
11634054

Achromatopsia
9605778

Achromatomaly
10325390

CSS Examples

Text

The CSS property to change the color of the text to Decimal 11634054 is called "color". The color property can be set on classes, ids or directly on the HTML element.

This example shows how text in the color #B18586 looks like.

```
.text, #text, p{  
    color:#B18586  
}
```

If you want to add a text shadow in that color use the text-shadow property, you can generate a text shadow directly with our [CSS Text Shadow Generator](#).

Here you see how black text with a 4 pixel #B18586 colored shadow looks like.

```
.shadow{ text-shadow: 4px 4px 2px #B18586
}
```

Border

The CSS property to change the border of an element to Decimal 11634054 is called "border". The border property can be set on classes, ids or directly on the HTML element.

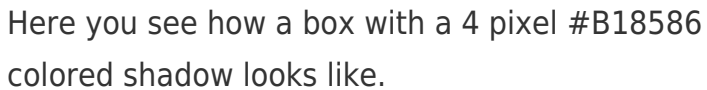
This example shows the color as border, it can be applied via the CSS property "border" or "border-color".

```
.border, #border, table{ border:4px solid
#B18586 }
```

If only the border color should be changed use the property `border-color`.

```
.border{ border-color:#B18586 }
```

If you want to add a box shadow in that color use:



Here you see how a box with a 4 pixel #B18586 colored shadow looks like.

```
.boxshadow{ -moz-box-shadow:4px 4px 4px  
4px #B18586; -webkit-box-shadow:4px 4px  
4px 4px #B18586; box-shadow:4px 4px 4px  
4px #B18586 }
```

Background

The CSS property to change the background color of an element to Decimal 11634054 is called "background". The background property can be set on classes, ids or directly on the HTML element.

```
.background, #background, body{  
background:#B18586 }
```

If only the background color should be changed can be used:

```
.background{ background-color:#B18586 }
```

This example shows the color as background, it is applied via the CSS property "background".

To optimize and compress your CSS code, you can use our [online CSS compressor and optimizer](#) based on csstidy. If you want to create a linear or radial gradient as background or border, check our [CSS Gradient Generator](#).

Hey! You found this booklet interesting? Support Converting Colors with the new Membership Option!

The pro membership hides all ads, plus gives you double the colors in the color bucket, and more awesome pro features!

[Learn more, Memberships starting at \\$2.50/m!](#)

**Follow me
on Twitter!**

@ConvertingColor