

# Converting Colors

Decimal(11634302)

Have a look what the booklet for  
Decimal(11634302) contains.

<b>Decimal(11634302)</b> .....	3
<i><b>Conversions</b></i> .....	4
<i><b>Details</b></i> .....	6
<i><b>Harmonies</b></i> .....	11
<i><b>Previews</b></i> .....	23
<i><b>Color Blindness Simulation</b></i> .....	26
<i><b>CSS Examples</b></i> .....	29

# Color

**Decimal(11634302)**

# Conversions

## Conversions Part 1

<b>Format</b>	<b>Color</b>
Hex	B1867E
RGB	177, 134, 126
RGB Percent	69%, 53%, 49%
CMY	0.3059, 0.4745, 0.5059
CMYK	0.00, 0.24, 0.29, 0.31
HSL	9°, 25%, 59%
HSV	9°, 29%, 69%
XYZ	30.4225, 27.9037, 23.5212
YIQ	145.9450, 28.1960, 6.6280

# Conversions

## Conversions Part 2

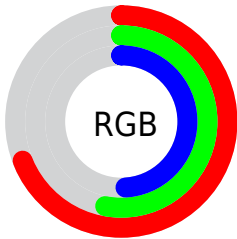
<b>Format</b>	<b>Color</b>
<b>RYB</b>	177, 135, 126
Decimal	11634302
CIELab	59.80, 15.29, 10.69
CIElCh	60, 18.657, 34.952
Yxy	27.9037, 0.3717, 0.3409
Android (android.graphics.Color)	4289824382 (0xFFB1867E)
YUV	145.9450, -9.8329, 27.2352
Hunter-Lab	52.8239, 10.3602, 10.5764

# Details

The Decimal color **11634302** is a dark color, and the websafe version is hex **CC9999**. A complement of this color would be **8300977**, and the grayscale version is **9605778**.

A 20% lighter version of the original color is **15383475**, and **8082509** is the 20% darker color. If you saturate the color by 10%, you get **11630444**, and if you desaturate by 10%, it is **11638160**.

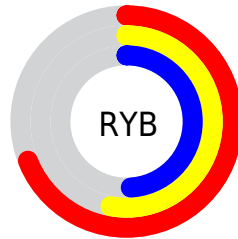
# Distribution



Red (69%)

Green (53%)

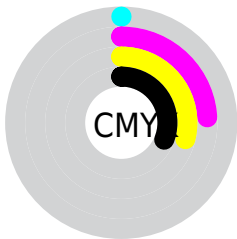
Blue (49%)



Red (69%)

Yellow (53%)

Blue (49%)

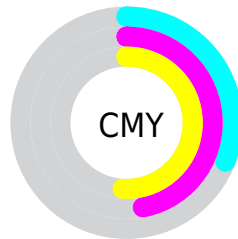


Cyan (0%)

Magenta (24%)

Yellow (29%)

Black (31%)



Cyan (31%)

Magenta (47%)

Yellow (51%)

# Brightness & Saturation Gradients

These gradients show how the Decimal color 11634302 changes by changing the brightness by 10 percent. The first figure shows a shift by +10% for each color and the second figure -10%.

Similar to the brightness gradients but the following saturation gradients show a change of the Decimal color 11634302 by changing the saturation by 10% instead.





11634302



11634302

16777215



9858405



15383475



8082509



16766926



6438198



16774378



4794145



3215883



1835009



0



11634302



11634302



11630444



11638160

 11626587

 11642017

 11622729

 11645875

 11618871

 11649733

 11615013

 11653591

 11611156

 11657448

 11607554

 11661050

 11607040

 11664895

 11665407

# Harmonies

## Analogous

The Analogous color harmony consists of three colors that are next to each other on the color wheel.



11633806



11634302



11111027

# Triad

The Triadic color harmony groups three colors that are evenly spaced from another and form a triangle on the color wheel.



11634302



7706754



8425904

# Complementary

The Complementary color scheme is a pair of colors which are on the opposite of each other on the color wheel.



11634302



8300977

# Split Complementary

Split-complementary colors differ from the complementary color scheme. The scheme consists of three colors, the original color and two neighbors of the complement color.



7181997



11634302



6789778

# Square

The Square scheme is like the rectangle color scheme, but the four colors are evenly spaced on the color wheel.



11634302



8951157



6527394



9866155

# Rectangle

The Rectangle color scheme consists of four colors that form a rectangle on the color wheel.



11634302



10456688



6527394



7967408



# Sweetspot

The Sweet Spot groups the original color and five complimentary colors.



11634302



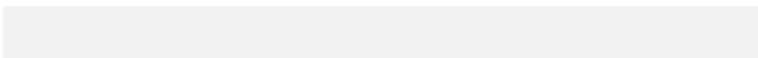
15127761



11632297



7563366



15921906



7566195



# Same Dimension

The Same Dimension uses a secret algorithm to generate beautiful new colors.



11634302



15114901



11640702



5853776



10033152



1704960



# Inverse Universe

The Inverse Universe completely reimagines the original color for something new.



8300977



9820646



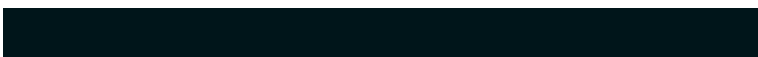
8294577



5265497



33177



5402



# Previews

## White Background



This preview shows how the Decimal color 11634302 looks on a white background.

## Color Contrast Check

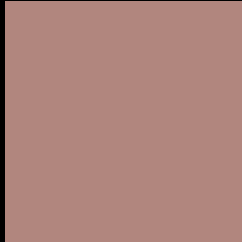
Large Text (above 18pt) WCAG AA ✓ Pass

Any Text WCAG AA × Fail

Large Text (above 18pt) WCAG AAA × Fail

Any Text WCAG AAA × Fail

# Black Background



This preview shows how the Decimal color 11634302 looks on a black background.

## Color Contrast Check

Large Text (above 18pt) WCAG AA ✓ Pass

Any Text WCAG AA ✓ Pass

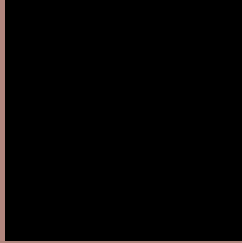
Large Text (above 18pt) WCAG AAA ✓ Pass

Any Text WCAG AAA × Fail

If you want to check with other color combinations, try the [Color Contrast Checker](#).



## Decimal 11634302 Background



This preview shows how black text looks on a background with the Decimal color 11634302.



This preview shows how white text looks on a background with the Decimal color 11634302.

# Color Blindness Simulation

Color vision deficiency is a very complex topic, and I could not describe the different causes any better than Wikipedia does, so if you want to learn more, you should check out their [article about color blindness](#).

## Dichromacy





**Tritanopia**  
11764878

# Trichromacy



**Original Color**  
11634302

**Protanomaly**  
10521729

**Deuteranomaly**  
11110781

**Tritanomaly**  
11699592

# Monochromacy



**Original Color**  
11634302

**Achromatopsia**  
9605778

**Achromatomaly**  
10325643

# CSS Examples

## Text

The CSS property to change the color of the text to Decimal 11634302 is called "color". The color property can be set on classes, ids or directly on the HTML element.

This example shows how text in the color #B1867E looks like.

```
.text, #text, p{  
    color:#B1867E  
}
```

If you want to add a text shadow in that color use the text-shadow property, you can generate a text shadow directly with our [CSS Text Shadow Generator](#).

Here you see how black text with a 4 pixel #B1867E colored shadow looks like.

```
.shadow{ text-shadow: 4px 4px 2px #B1867E
}
```

## Border

The CSS property to change the border of an element to Decimal 11634302 is called "border". The border property can be set on classes, ids or directly on the HTML element.

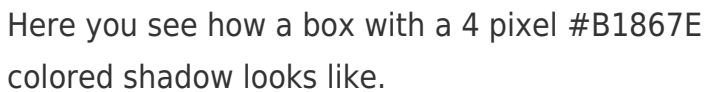
This example shows the color as border, it can be applied via the CSS property "border" or "border-color".

```
.border, #border, table{ border:4px solid
#B1867E }
```

If only the border color should be changed use the property `border-color`.

```
.border{ border-color:#B1867E }
```

If you want to add a box shadow in that color use:



Here you see how a box with a 4 pixel #B1867E colored shadow looks like.

```
.boxshadow{ -moz-box-shadow:4px 4px 4px  
4px #B1867E; -webkit-box-shadow:4px 4px  
4px 4px #B1867E; box-shadow:4px 4px 4px  
4px #B1867E }
```

# Background

The CSS property to change the background color of an element to Decimal 11634302 is called "background". The background property can be set on classes, ids or directly on the HTML element.

```
.background, #background, body{  
background:#B1867E }
```

If only the background color should be changed can be used:

```
.background{ background-color:#B1867E }
```

This example shows the color as background, it is applied via the CSS property "background".

To optimize and compress your CSS code, you can use our [online CSS compressor and optimizer](#) based on csstidy. If you want to create a linear or radial gradient as background or border, check our [CSS Gradient Generator](#).



Hey! You found this booklet interesting? Support Converting Colors with the new Membership Option!

The pro membership hides all ads, plus gives you double the colors in the color bucket, and more awesome pro features!

**[Learn more, Memberships starting at \\$2.50/m!](#)**

**Follow me  
on Twitter!**

@ConvertingColor