

Converting Colors

Decimal(11635055)

Have a look what the booklet for
Decimal(11635055) contains.

Decimal(11635055)	3
<i>Conversions</i>	4
<i>Details</i>	6
<i>Harmonies</i>	11
<i>Previews</i>	23
<i>Color Blindness Simulation</i>	26
<i>CSS Examples</i>	29

Color

Decimal(11635055)

Conversions

Conversions Part 1

Format	Color
Hex	B1896F
RGB	177, 137, 111
RGB Percent	69%, 54%, 44%
CMY	0.3059, 0.4627, 0.5647
CMYK	0.00, 0.23, 0.37, 0.31
HSL	24°, 30%, 56%
HSV	24°, 37%, 69%
XYZ	29.9464, 28.3861, 18.9397
YIQ	145.9960, 32.1860, 0.3940

Conversions

Conversions Part 2

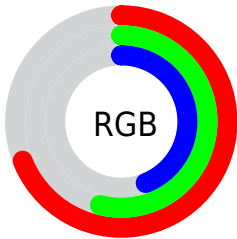
Format	Color
RYB	177, 154, 111
Decimal	11635055
CIELab	60.24, 11.63, 19.80
CIELCh	60, 22.959, 59.577
Yxy	28.3861, 0.3875, 0.3674
Android (android.graphics.Color)	4289825135 (0xFFB1896F)
YUV	145.9960, -17.2530, 27.1905
Hunter-Lab	53.2786, 7.0920, 16.2185

Details

The Decimal color **11635055** is a dark color, and the websafe version is hex **CC9966**. A complement of this color would be **7313329**, and the grayscale version is **9605778**.

A 20% lighter version of the original color is **15384227**, and **8083263** is the 20% darker color. If you saturate the color by 10%, you get **11632221**, and if you desaturate by 10%, it is **11637889**.

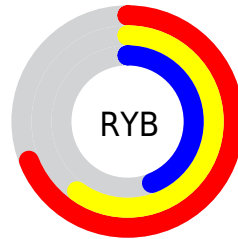
Distribution



Red (69%)

Green (54%)

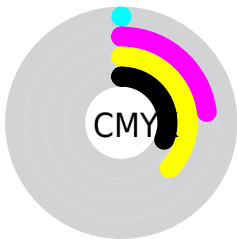
Blue (44%)



Red (69%)

Yellow (60%)

Blue (44%)

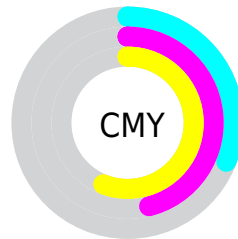


Cyan (0%)

Magenta (23%)

Yellow (37%)

Black (31%)



Cyan (31%)

Magenta (46%)

Yellow (56%)

Brightness & Saturation Gradients

These gradients show how the Decimal color 11635055 changes by changing the brightness by 10 percent. The first figure shows a shift by +10% for each color and the second figure -10%.

Similar to the brightness gradients but the following saturation gradients show a change of the Decimal color 11635055 by changing the saturation by 10% instead.

 11635055

 11635055

16777215

 9859158

 15384227

 8083263

 16767678

 6373417

 16775130

 4729364

 16777206

 3151104

 1638400

 0

 11635055

 11635055

 11632221

 11637889

■ 11629644

■ 11640466

■ 11626810

■ 11643300

■ 11623976

■ 11646134

■ 11621143

■ 11648968

■ 11618565

■ 11651545

■ 11617792

■ 11654379

■ 11657213

■ 11660031

Harmonies

Analogous

The Analogous color harmony consists of three colors that are next to each other on the color wheel.



12223614



11635055



10522729

Triad

The Triadic color harmony groups three colors that are evenly spaced from another and form a triangle on the color wheel.



11635055



6266256



9735348

Complementary

The Complementary color scheme is a pair of colors which are on the opposite of each other on the color wheel.



11635055



7313329

Split Complementary

Split-complementary colors differ from the complementary color scheme. The scheme consists of three colors, the original color and two neighbors of the complement color.



7902137



11635055



5610660

Square

The Square scheme is like the rectangle color scheme, but the four colors are evenly spaced on the color wheel.



11635055



7576188



6265267



11241126

Rectangle

The Rectangle color scheme consists of four colors that form a rectangle on the color wheel.



11635055



9606251



6265267



9146039

Sweetspot

The Sweet Spot groups the original color and five complimentary colors.



11635055



15128268



11628440



7563876



15921906



7566195

Same Dimension

The Same Dimension uses a secret algorithm to generate beautiful new colors.



11635055



15116158



11643247



5854288



10042368



1706496

Inverse Universe

The Inverse Universe completely reimagines the original color for something new.



7313329



8306150



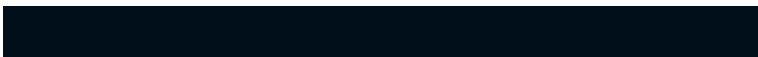
7305137



5264985



23961



3866

Previews

White Background



This preview shows how the Decimal color 11635055 looks on a white background.

Color Contrast Check

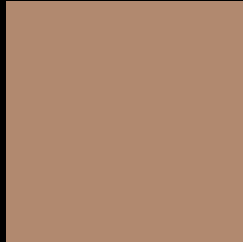
Large Text (above 18pt) WCAG AA ✓ Pass

Any Text WCAG AA × Fail

Large Text (above 18pt) WCAG AAA × Fail

Any Text WCAG AAA × Fail

Black Background



This preview shows how the Decimal color 11635055 looks on a black background.

Color Contrast Check

Large Text (above 18pt) WCAG AA ✓ Pass

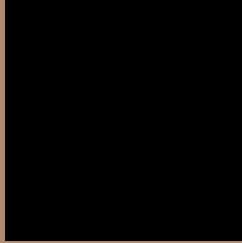
Any Text WCAG AA ✓ Pass

Large Text (above 18pt) WCAG AAA ✓ Pass

Any Text WCAG AAA × Fail

If you want to check with other color combinations, try the [Color Contrast Checker](#).

Decimal 11635055 Background



This preview shows how black text looks on a background with the Decimal color 11635055.



This preview shows how white text looks on a background with the Decimal color 11635055.

Color Blindness Simulation

Color vision deficiency is a very complex topic, and I could not describe the different causes any better than Wikipedia does, so if you want to learn more, you should check out their [article about color blindness](#).

Dichromacy



Original Color
11635055

Protanopia
10195315

Deuteranopia
11242351



Tritanopia
11830671

Trichromacy



Original Color
11635055

Protanomaly
10718834

Deuteranomaly
11373167

Tritanomaly
11765379

Monochromacy



Original Color
11635055

Achromatopsia
9605778

Achromatomaly
10325893

CSS Examples

Text

The CSS property to change the color of the text to Decimal 11635055 is called "color". The color property can be set on classes, ids or directly on the HTML element.

This example shows how text in the color #B1896F looks like.

```
.text, #text, p{  
    color:#B1896F  
}
```

If you want to add a text shadow in that color use the text-shadow property, you can generate a text shadow directly with our [CSS Text Shadow Generator](#).

Here you see how black text with a 4 pixel #B1896F colored shadow looks like.

```
.shadow{ text-shadow: 4px 4px 2px #B1896F
}
```

Border

The CSS property to change the border of an element to Decimal 11635055 is called "border". The border property can be set on classes, ids or directly on the HTML element.

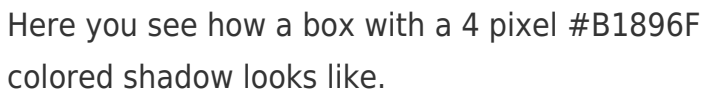
This example shows the color as border, it can be applied via the CSS property "border" or "border-color".

```
.border, #border, table{ border:4px solid
#B1896F }
```

If only the border color should be changed use the property `border-color`.

```
.border{ border-color:#B1896F }
```

If you want to add a box shadow in that color use:



Here you see how a box with a 4 pixel #B1896F colored shadow looks like.

```
.boxshadow{ -moz-box-shadow:4px 4px 4px  
4px #B1896F; -webkit-box-shadow:4px 4px  
4px 4px #B1896F; box-shadow:4px 4px 4px  
4px #B1896F }
```

Background

The CSS property to change the background color of an element to Decimal 11635055 is called "background". The background property can be set on classes, ids or directly on the HTML element.

```
.background, #background, body{  
background:#B1896F }
```

If only the background color should be changed can be used:

```
.background{ background-color:#B1896F }
```

This example shows the color as background, it is applied via the CSS property "background".

To optimize and compress your CSS code, you can use our [online CSS compressor and optimizer](#) based on csstidy. If you want to create a linear or radial gradient as background or border, check our [CSS Gradient Generator](#).

Hey! You found this booklet interesting? Support Converting Colors with the new Membership Option!

The pro membership hides all ads, plus gives you double the colors in the color bucket, and more awesome pro features!

[Learn more, Memberships starting at \\$2.50/m!](#)

**Follow me
on Twitter!**

@ConvertingColor