

Converting Colors

Decimal(11635575)

Have a look what the booklet for
Decimal(11635575) contains.

Decimal(11635575)	3
<i>Conversions</i>	4
<i>Details</i>	6
<i>Harmonies</i>	11
<i>Previews</i>	23
<i>Color Blindness Simulation</i>	26
<i>CSS Examples</i>	29

Color

Decimal(11635575)

Conversions

Conversions Part 1

Format	Color
Hex	B18B77
RGB	177, 139, 119
RGB Percent	69%, 55%, 47%
CMY	0.3059, 0.4549, 0.5333
CMYK	0.00, 0.21, 0.33, 0.31
HSL	21°, 27%, 58%
HSV	21°, 33%, 69%
XYZ	30.6939, 29.1443, 21.4604
YIQ	148.0820, 29.0680, 1.8360

Conversions

Conversions Part 2

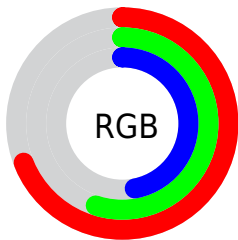
Format	Color
R_{YB}	177, 150, 119
Decimal	11635575
CIE _{Lab}	60.91, 11.53, 16.21
CIE _{LCh}	61, 19.894, 54.566
Yxy	29.1443, 0.3775, 0.3585
Android (android.graphics.Color)	4289825655 (0xFFB18B77)
YUV	148.0820, -14.3374, 25.3611
Hunter-Lab	53.9854, 7.0131, 14.2207

Details

The Decimal color **11635575** is a dark color, and the websafe version is hex **CC9999**. A complement of this color would be **7839153**, and the grayscale version is **9737364**.

A 20% lighter version of the original color is **15385003**, and **8083783** is the 20% darker color. If you saturate the color by 10%, you get **11632485**, and if you desaturate by 10%, it is **11638665**.

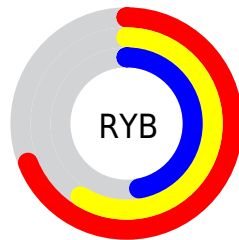
Distribution



Red (69%)

Green (55%)

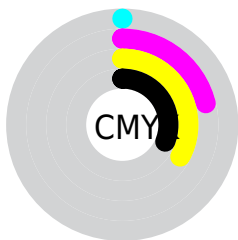
Blue (47%)



Red (69%)

Yellow (59%)

Blue (47%)

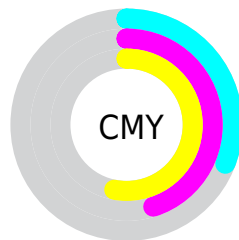


Cyan (0%)

Magenta (21%)

Yellow (33%)

Black (31%)



Cyan (31%)

Magenta (45%)

Yellow (53%)

Brightness & Saturation Gradients

These gradients show how the Decimal color 11635575 changes by changing the brightness by 10 percent. The first figure shows a shift by +10% for each color and the second figure -10%.

Similar to the brightness gradients but the following saturation gradients show a change of the Decimal color 11635575 by changing the saturation by 10% instead.


 11635575

 11635575

16777215

 9859422

 15385003

 8083783

 16768199

 6373680

 16775651

 4729627

 3216897

 1769472

 0

 11635575

 11635575

 11632485

 11638665

11629652

11641498

11626562

11644588

11623728

11647422

11620639

11650512

11617549

11653601

11615488

11656435

11659519

11662335

Harmonies

Analogous

The Analogous color harmony consists of three colors that are next to each other on the color wheel.



12027781



11635575



10719600

Triad

The Triadic color harmony groups three colors that are evenly spaced from another and form a triangle on the color wheel.



11635575



7052687



9605299

Complementary

The Complementary color scheme is a pair of colors which are on the opposite of each other on the color wheel.



11635575



7839153

Split Complementary

Split-complementary colors differ from the complementary color scheme. The scheme consists of three colors, the original color and two neighbors of the complement color.



8033974



11635575



6462881

Square

The Square scheme is like the rectangle color scheme, but the four colors are evenly spaced on the color wheel.



11635575



8231806



6789807



10980008

Rectangle

The Rectangle color scheme consists of four colors that form a rectangle on the color wheel.



11635575



9934193



6789807



9081525

Sweetspot

The Sweet Spot groups the original color and five complimentary colors.



11635575



15128271



11630494



7563877



15921906



7566195

Same Dimension

The Same Dimension uses a secret algorithm to generate beautiful new colors.



11635575



15117196



11642743



5854032



10040576



1706240

Inverse Universe

The Inverse Universe completely reimagines the original color for something new.



7839153



9226214



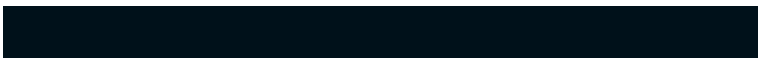
7831985



5264985



25753



4378

Previews

White Background



This preview shows how the Decimal color 11635575 looks on a white background.

Color Contrast Check

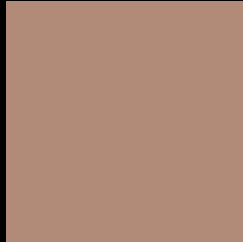
Large Text (above 18pt) WCAG AA ✓ Pass

Any Text WCAG AA × Fail

Large Text (above 18pt) WCAG AAA × Fail

Any Text WCAG AAA × Fail

Black Background



This preview shows how the Decimal color 11635575 looks on a black background.

Color Contrast Check

Large Text (above 18pt) WCAG AA ✓ Pass

Any Text WCAG AA ✓ Pass

Large Text (above 18pt) WCAG AAA ✓ Pass

Any Text WCAG AAA × Fail

If you want to check with other color combinations, try the [Color Contrast Checker](#).

Decimal 11635575 Background



This preview shows how black text looks on a background with the Decimal color 11635575.



This preview shows how white text looks on a background with the Decimal color 11635575.

Color Blindness Simulation

Color vision deficiency is a very complex topic, and I could not describe the different causes any better than Wikipedia does, so if you want to learn more, you should check out their [article about color blindness](#).


Dichromacy



Original Color
11635575

Protanopia
10195835

Deuteranopia
11242871



Tritanopia
11831186

Trichromacy



Original Color
11635575

Protanomaly
10719354

Deuteranomaly
11373687

Tritanomaly
11765896

Monochromacy



Original Color
11635575

Achromatopsia
9737364

Achromatomaly
10457481

CSS Examples

Text

The CSS property to change the color of the text to Decimal 11635575 is called "color". The color property can be set on classes, ids or directly on the HTML element.

This example shows how text in the color #B18B77 looks like.

```
.text, #text, p{  
  color:#B18B77  
}
```

If you want to add a text shadow in that color use the text-shadow property, you can generate a text shadow directly with our [CSS Text Shadow Generator](#).

Here you see how black text with a 4 pixel #B18B77 colored shadow looks like.

```
.shadow{ text-shadow: 4px 4px 2px #B18B77
}
```

Border

The CSS property to change the border of an element to Decimal 11635575 is called "border". The border property can be set on classes, ids or directly on the HTML element.

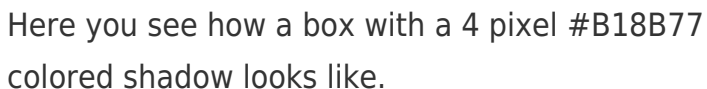
This example shows the color as border, it can be applied via the CSS property "border" or "border-color".

```
.border, #border, table{ border:4px solid
#B18B77 }
```

If only the border color should be changed use the property `border-color`.

```
.border{ border-color:#B18B77 }
```

If you want to add a box shadow in that color use:



Here you see how a box with a 4 pixel #B18B77 colored shadow looks like.

```
.boxshadow{ -moz-box-shadow:4px 4px 4px  
4px #B18B77; -webkit-box-shadow:4px 4px  
4px 4px #B18B77; box-shadow:4px 4px 4px  
4px #B18B77 }
```

Background

The CSS property to change the background color of an element to Decimal 11635575 is called "background". The background property can be set on classes, ids or directly on the HTML element.

```
.background, #background, body{  
background:#B18B77 }
```

If only the background color should be changed can be used:

```
.background{ background-color:#B18B77 }
```

This example shows the color as background, it is applied via the CSS property "background".

To optimize and compress your CSS code, you can use our [online CSS compressor and optimizer](#) based on csstidy. If you want to create a linear or radial gradient as background or border, check our [CSS Gradient Generator](#).

Hey! You found this booklet interesting? Support Converting Colors with the new Membership Option!

The pro membership hides all ads, plus gives you double the colors in the color bucket, and more awesome pro features!

[Learn more, Memberships starting at \\$2.50/m!](#)

**Follow me
on Twitter!**

@ConvertingColor